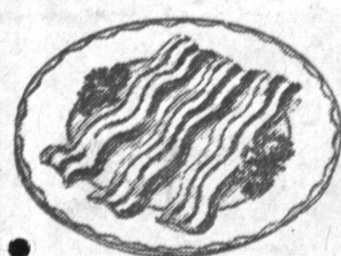


EAT MONEY SAVING MARCH FOOD SALE!

DAYS OF LOW, LOW PRICES! STOCK UP NOW AND SAVE AND SAVE!

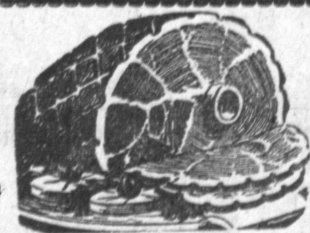


LEAN EASTERN
CORN-FED
CELLO WRAPPED
PACKAGE

**SLICED
BACON**

FARMER JOHN NO. 1 QUALITY BACON 47c lb.

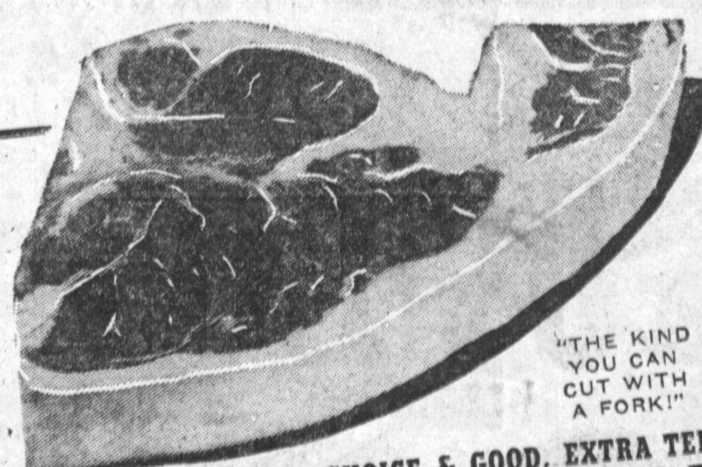
35 c lb.



Rath Black Hawk
LEAN CORN-FED
SWEET EASTERN SUGAR-CURED
TENDER, MEATY PARTS TO BAKE

**SMOKED
HAM**

37 c lb.



FOLKS, AGAIN THIS WONDERFUL
**STEAK
SALE!**

U. S. GOV'T GRADED CHOICE & GOOD, EXTRA TENDER AND EXTRA JUICY STEER

SWISS STEAKS

GENUINE STEER BEEF, U. S. GRADED CHOICE & GOOD, EXTRA TENDER AND MEATY

CLUB STEAKS

U. S. GOV'T GRADED CHOICE & GOOD, WELL AGED AND WELL TRIMMED, JUICY

T-BONE STEAKS

"THE KIND YOU CAN CUT WITH A FORK!" U. S. GRADED CHOICE & GOOD... THE FINEST

PORTERHOUSE

THE VERY FINEST MONEY CAN BUY! U. S. CHOICE & GOOD STEER BEEF

BONELESS N.Y. CUT

59 c lb.

69 c lb.

79 c lb.

89 c lb.

\$1.09 lb.

Ground Fresh Hourly from Juicy Tender Select Cuts of Beef

GROUND BEEF **24** c lb.

MORRELL'S LEAN EASTERN CORN-FED RIB CUT

LOIN PORK RST. **39** c lb.

ARMOUR'S STAR LEAN EASTERN MEATY, 1 to 3 LB. AVG.

SPARE RIBS **39** c lb.

GRADE
AA

YOUNG, TENDER, PLUMP
THE VERY FINEST OREGON GRAIN-FED

**TOM
TURKEYS**

39 c lb.

Clark
SUPER MARKETS

WONDERFUL MEAT
ALWAYS WELL AGED
AND WELL TRIMMED
BEFORE WEIGHING
TO SAVE YOU MORE!

Fresh Fish Daily

For
Wonderful
Lenten
Meals



FRESH, SMALL, TENDER
IDEAL FOR BROILING

SELECT LOBSTER **69** c lb.

FRESH CAUGHT
PAN-READY

FILLET SEA BASS **35** c lb.

NORTHERN SELECT

SLICED HALIBUT **33** c lb.

EXTRA FANCY, FRESH

BROOKFIELD TROUT **59** c lb.

CERTI-FRESH FROZEN

FILLET SOLE Full Lb. Pkg. **47** c

NEW CREAMY WHITE SOAP
LAVA

2 MEDIUM SIZE CAKES **23** c

E-Z POP

POPCORN
IN MAGIC THROW-
AWAY POPPER,
REG. PKG. **39** c

EASY-TO-EAT
POPCORN 2 Gallon Can **69** c

ALLEY'S HAMBURGER
DELISH 12-oz. Jar **23** c

NEW! IMPROVED
SPIC & SPAN

LGE. PKG. **26** c GT. PKG. **85** c

OBERTI

PITTED OLIVES
SELECT - RIPE
NO. 1 TALL CAN **29** c

MILANI'S Low Calorie Dressings
DRESSING 8-oz. Jar **35** c

DINNER TIME
BEEF POT PIE 17-oz. Tin **69** c

LIQUID DISHWASHING SUDS
JOY

LGE. PKG. **29** c GT. PKG. **69** c

SIMPLE SIMON

CHICKEN POT PIE
NEW, 20-OZ.
ECONOMY SIZE **69** c

CIRCUS - 7-oz. Can
MIXED NUTS **59** c

RENUZIT
DRY CLEANER Half Gal. **99** c

ALL PURPOSE DETERGENT
OXYDOL

LGE. PKG. **29** c GT. PKG. **69** c

BLUE BONNET

MARGARINE
POUND PACKAGE **27** c

CHEF BOY-AR-DEE
MEAT BALLS 15 1/4-oz. Can **39** c

DELSEY TOILET
TISSUE 2 rolls **27** c

PURE VEG. SHORTENING
CRISCO

POUND CAN. **33** c

MILD, SAFE
LUX FLAKES

LGE. PKG. **29** c GIANT PKG. **59** c

Clark WINES - LIQUORS
SUPER MARKETS

**LIGHT, MILD
EASTERN
BEER**

FULL
CASE
OF 24
12-OZ.
CANS

\$2.98



RICHELIEU
WONDERFUL

Fruit Wines

LOGANBERRY
BLACKBERRY
CHERRY
FULL FIFTH
ONLY **69** c

FINE DISTILLED
VODKA
Full Fifth

\$2.89



**ANCIENT
AGE**

6 YEAR OLD
KENTUCKY
STRAIGHT
BOURBON
WHISKEY

FULL FIFTH -
\$4.79



EXTRA
FANCY
SELECT

WASHINGTON

**WINESAP
APPLES**

2 lbs. **25** c

GARDEN FRESH LARGE SNOWBALL

**CAULI-
FLOWER**

5 c lb.

SELECT JUMBO SIZE

AVOCADOS

THE VERY BEST FUERTE
... RICH IN OIL CONTENT
FROM CALAVO

10 c ea

GARDEN FRESH ICED

CARROTS

LARGE
FULL
BUNCHES
MAGGIO'S

5 c bu.

ALL WHITE MEAT
SUGAR RIPE

WALNUTS

3 lbs. **\$1**

OPEN
7 DAYS
9 to 10

Clark
SUPER MARKETS

Pacific Coast Highway at Hawthorne in Torrance

● Sepulveda at Marine ● Crenshaw at Compton

Manhattan Beach ● Vermont at 140th St.

Los Angeles ● In Bellflower ● In Compton

Clark at Rose
Ample Free Parking

Limit Rights Reserved