

RYONE ELSE
EGORRA!
 SATURDAY AND SUNDAY
 A LOT O' THE GREEN STUFF!!!

FOOD GIANT

423 S. HAWTHORNE
 CORNER 132nd STREET
 HAWTHORNE

DON'T MISS
 THE FREE
 SHAMROCKS
 THURSDAY
 MARCH 17

Flown From
 Ireland By
 Pan-American
 Airways



LIMIT RIGHTS RESERVED

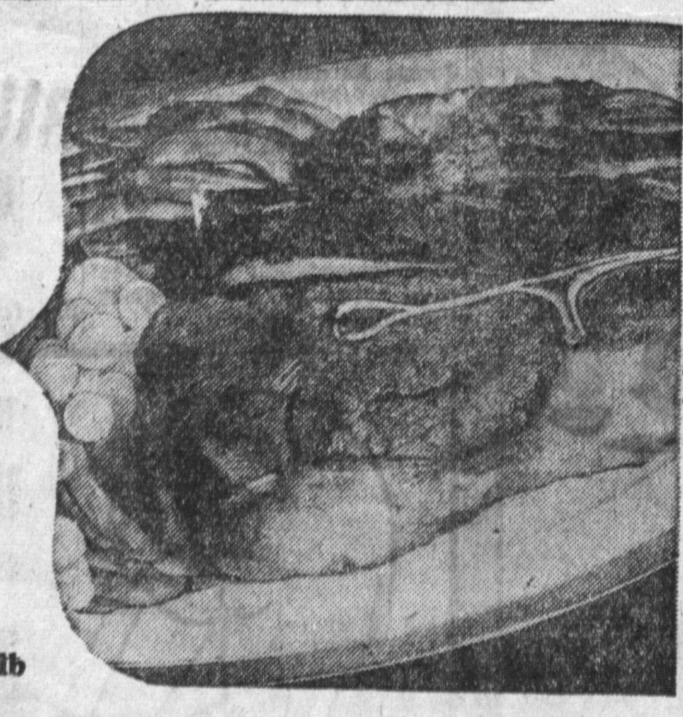
MADE AA LARGE EGGS
19c

KIST
STYLE
NA
25c

- SUNSWEEP PRUNES** BREAKFAST SIZED 2 LB. BOX **39c**
- LIBBY SAUERKRAUT** LARGE No. 2 1/2 CAN **19c**
- SOCKEYE SALMON** RED DUCHESS REG. NO. 1/2 CAN **39c**
- CHB SWEET RELISH** 8 OZ. JAR **15c**

*** GUARANTEED MEATS ***

U.S. GOVT. GRADED 'CHOICE' AND 'GOOD' STEER BEEF
CHUCK ROASTS
33c
 This week's outstanding meat buy! Cut from the finest aged U.S. fed Graded "Choice" and "Good" Steer Beef. Tops in flavor and tenderness. In fact, they are banquet perfect. Heavy chine bones and excess fat removed before weighing.
 BEST CENTER CUTS NONE PRICED HIGHER



IOWA BRAND - SHANKLESS, TENDERIZED PICNIC HAMS
 Sugar Cured Eastern Grain Fed Pork - Slowly Hickory Smoked to produce that delightful flavor. Serve with sliced pineapple and escalloped potatoes.
33c
 5 TO 7 LB. AVERAGE
 FRESH - CUT-UP - PAN-READY

- GROUND BONE ROAST** from U.S. Govt. Graded "Choice" and "Good" Steer Beef. Versatile roast. Extra lean, too, because Food Giants Round Bones trimmed waste free before weighing. **43c**
- GROUND BEEF** Food Giant's specialty—specially ground from lean chunks of U.S. Govt. Graded "Choice" and "Good" Steer Beef. Its delicious. **29c**
- LIBUT STEAK** cold Alaskan waters. A delicate mild fish. Serve baked or broiled. **35c**
- BONELESS BEEF ROAST** Absolutely waste free. Here's an extra special roast that Food Giant customers have made their favorite. It's all lean tender meat, easy to carve. **63c**
- WHITE FISH FILLET** Boneless firm white meat. Serve broiled with chunks of pineapple or baked with Spanish sauce. **39c**

- DELICATESSEN**
- SWIFT'S SKINLESS FRANKS** **47c**
 - CREAMY, FRESH JACK CHEESE** **39c**
 - RATH'S SLICED CHOPPED PORK** **49c**



Levard, Hawthorne

Torrance Gets First Local Credit Dentist

As Torrance's population approaches the 60,000 mark, the city is rapidly assuming the earmarks of a metropolitan area.

Every day new services are coming to town, the latest of which is the Dr. Tarr Dental office, a credit dentist, centrally located at 1311 1/2 Sartori ave. (above Levy's department store).

The dental office, which opens at 10 in the morning, will remain open every evening Monday through Saturday till 7:30. One of the outstanding features is that no appointments are necessary at any time for any type of service. Patients coming to the office will be waited on, according to Dr. Tarr.

Personal History
 Dr. Tarr was raised in Southern California and has lived in and around Los Angeles.

He was a first lieutenant during World War II. As a captain followed by duty in the European theater recently, he served as a dentist in the United States Air Force.

Prior to going into the service, he practiced dentistry in Los Angeles for two years, managing a credit dentist's office there.

He attended L. A. city college, UCLA, and took his dental training at the University of California dental college, San Francisco medical center.

Dr. Tarr is married and has three children, Sharon, 6, David, 4, and Pamela, 2. Presently living in Inglewood, he intends to move to Torrance soon, planning to make his permanent home here.

A survey to determine the shopping habits of Torrance residents will be made under the sponsorship of Paul Lorange of Paul's Chevrolet, with the approval of the Torrance Chamber of Commerce.

The survey is intended to help merchants continue to meet the needs of Torrance residents as the community grows.

Shopping Habits to Be Studied

Dr. Tarr is married and has three children, Sharon, 6, David, 4, and Pamela, 2. Presently living in Inglewood, he intends to move to Torrance soon, planning to make his permanent home here.

Truck Crash Boulders Tie Up Traffic

Twenty-one tons of boulders tied up traffic on Pacific Coast Highway and Hawthorne ave. for two hours last Thursday when a truck and an auto collided.

The truck, driven by David R. Arnal, 20, of Ontario, carried rocks for a Redondo breakwater project. One side of the truck was completely demolished.

The auto was driven by B. F. Foote, 56, of 3123 Winlock rd., Walteria.

Arnal escaped injury. Mrs. Mary Foote, 55, received minor injuries.

Two wrecking trucks, a five-ton jax and a passing truck were used by police to free the wreckage and unblock the road, according to Officers H. B. Ingram and Miles Hamilton.

Houses for Sale to be Moved

Full Financing Low Monthly Payments

NO DOWN PAYMENT
 WE HAVE A LARGE SELECTION OF HOMES AT SUBSTANTIAL SAVINGS VISIT OUR LOT TODAY . . .

SPECIAL THIS WEEK-BEVERLY HILLS HOME
 3-bedroom, tile bath, separate dining room, large living room. Excellent condition. \$4,150 delivered to your lot.

FEDERAL INVESTMENT CO.

14410 S. Avalon, Gardena PL. 6-8101, PL. 6-8102

NEW CAR DIRECTORY

YOUR AUTHORIZED SALES and SERVICE IN THE TORRANCE AREA

BUICK FAirfax 8-6272
 IN TORRANCE BUICKS THE "BUY"
BUTLER BUICK
 2084 TORRANCE BLVD., TORRANCE.

LINCOLN - MERCURY FAirfax 8-3142
 SALES & SERVICE

SOUTH SHORE MOTOR CO.
 1535 POST AVENUE, TORRANCE

OLDSMOBILE - CADILLAC
 G.M.C. TRUCKS
CECIL L. THOMAS & SONS
 Terminal 3-5291 - PACIFIC at FOURTH, SAN PEDRO

DODGE - PLYMOUTH FRontier 2-2122
 SALES & SERVICE

WALTER G. LINTH
 312 PACIFIC COAST HWY. - 312 S. CATALINA, Redondo Beach

STUDEBAKER ORegon 8-4005
 Dealer Authorized by Studebaker Corporation to Service the Torrance Area

FRANK H. AFTON CO.
 240 N. MARKET, INGLEWOOD

PONTIAC - BUICK TErminAl 4-6448
 AUTHORIZED SALES and SERVICE

AVALON MOTOR CO.
 900 WEST ANAHEIM, WILMINGTON

To Service New Area

Parts of North Torrance now being served by the Gardena Post Office will be served by the Torrance Post Office starting April 1, according to Torrance Postmaster Clara Conner.

As of that date, residents in the area should have their letters addressed to "Torrance, Calif." rather than "Gardena, Calif."

The territory involved is bounded as follows: all the area between 174th st. and 190th st from Crenshaw to Western ave and the territory between 167th st. and 174th st. from Crenshaw to St. Andrews pl. Homes along Western ave. will not be affected.

Expert Advice on "How To" Your Choice OF Soft or Hardwood

LARGEST SELECTION OF "NUDES"

FINISH IT YOURSELF

IN THE HARBOR AREA MOST OF YOUR FURNITURE DOLLAR IS IN FINISHING

DO IT YOURSELF and SAVE

• Free Delivery • Easy Terms
H & H UPHOLSTERERS
 Complete Upholstery Service
 14303 NARBONNE AVE.
 G. J. Doyle DA. 6-2020

TORRANCE BUYER'S GUIDE

BAKER'S T.V. & APPLIANCE
 T.V. Washer & Dryer REFRIG. RANGE
 Admiral RCA - GE Frigidaire Crosley Gaffers Sattler
 Philco Blackstone Bendix Admiral Philco Western Holly
 Crosley Roper Elec. Ranges
 1344 El Prado - Torrance - FA. 8-6606

Oma's Liquor & Delicatessen
 Dairy Products -- Groceries
 • Unusual Foods •
 1954 W. Carson. Open 6 a.m. to 2 a.m. FA 8-0111

Torr. Cycle and Sports Shop
 COMPLETE LINE OF ATHLETIC EQUIPMENT
 RODS - REELS - GUNS and TACKLE
 Mercury Motors - Schwinn Bicycles - Leaks - Keys
 REPAIRING OF ALL KINDS
 1421 Marcelina - Torrance - FA. 8-6912

PARRISH STATIONERS
 OFFICE OUTFITTERS
 Globe-Wernicke Furniture - Royal Typewriters
 Portable Typewriters - All Makes - Electric Shavers
 1423 Marcelina - Torrance - FA. 8-6074

VAN'S MATTRESS & UPHOLSTERING
 CUSTOM BUILT FURNITURE OF ALL KINDS
 UPHOLSTERING - DRAPERIES - CORNICES
 FOAM RUBBER MATTRESSES
 2083 Torrance Blvd. - Torrance - FA. 8-3352

TOP HAT CLEANERS
 WE OPERATE OUR OWN PLANT
 OPEN 8 A.M. to 6 P.M. CLOSED SUNDAY
 FREE PICKUP and DELIVERY
 2218 Torrance Blvd. - Torrance - FA. 8-2713

WE BUY AND SELL 2nd TRUST DEEDS
 Make NEW Real Estate LOANS
 R. A. OWENS FA. 8-2300

BURKE'S BARGAIN SPOT
 BABY FURNITURE
 Complete Line of "Baby Line" and "Thayer", Strollers • Carriages • Potty Chairs • Rockers • Folding Gates • Play Pens • Trykes • Wagons • Etc. All At Bargains!
 2113 Torrance Blvd. at Cravens - FA. 8-0596

PLATT T-V SALES
 NEW C.B.S. COLUMBIA T.V. SPECIAL PRICES
 ON NEW 24" and 27" SETS
 MANY SMALLER 21" SETS ON HAND
 24609 NARBONNE AVE., LOMITA DA. 6-6318

JESS TELEVISION
 SALES & SERVICE
 For Prompt, Reliable Service Call
 Car Radio Service—Drive In
 DA. 6-1201
 23433 So. Western Ave. at 234th Street

Ready Made or Custom Made Picture Frames NAIR'S PICTURE SHOP
 FRAMED PICTURES and PRINTS • OIL PAINTINGS
 — Mats Cut to Order —
 1975 Carson St. - Torrance FA. 8-7728

PAINT THEM YOURSELF AND SAVE!
 Quality Furniture That You Can Finish Yourself. Furniture For Every Room In Your Home. With These Quality Products We Give You Free Expert Advice to Obtain the Finish You Desire.
 COMPLETE UPHOLSTERING SERVICE
 EASY TERMS IF DESIRED

H & H UPHOLSTERY
 24303 Narbonne - Lomita - DA. 6-2020
 Open Friday Even.