

GARY'S JEWELERS

BRINGS YOU A SLEIGHFUL OF WONDERFUL GIFTS

Sunbeam

THE BEST ELECTRIC APPLIANCES MADE

No gift would be more appreciated than a Sunbeam Mixmaster. Larger BOWL-FIT beaters for higher, lighter, finer-textured cakes. Saves tiring armwork. Puts extra deliciousness, extra success into cooking and baking. Better, easier food-preparing around the clock.



Sunbeam MIXMASTER 46.50

<p>Sunbeam MIXMASTER JUNIOR Best junior food mixer made. Full-mix beaters produce greater volume. 19.95</p>	<p>Sunbeam AUTOMATIC FRYPAN Perfect controlled heat for more delicious foods. 24.50</p>	<p>Sunbeam AUTOMATIC PERCOLATOR Most beautiful automatic percolator made. 10 Cup 29.95</p>	<p>Sunbeam SHAVEMASTER Big SMOOTH single head shaves closer, faster than any other method. 27.50</p>
<p>Sunbeam STEAM-DRY IRONS Either standard type or gravity feed. 17.95</p>	<p>Sunbeam AUTOMATIC COOKER & DEEP FRYER Does more things better. It cooks—it deep fries. 31.95</p>	<p>Sunbeam WAFFLE BAKER & GRILL Perfect waffles, toasted sandwiches and bacon, eggs, etc., because of Radiant Control.</p>	<p><i>Give Sunbeam and you give the finest</i></p>

IT'S THE WONDER OF THE AIRWAYS!

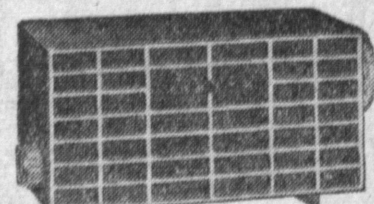
New 1955

ZENITH

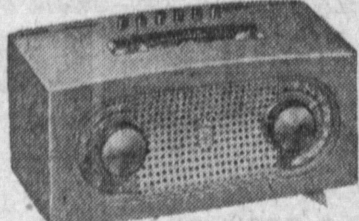
with exclusive

WAVEMAGNET* ANTENNA

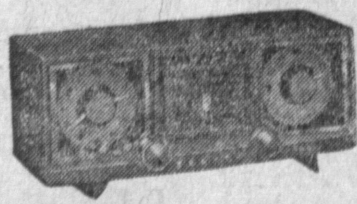
top performance EVEN ON WEAK SIGNALS!



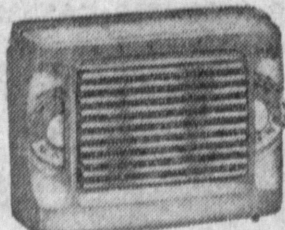
THE PACEMAKER AM RADIO
Small in size, but big in performance, styling and value. 1 to 1 tuning dial—gives fast, accurate station selection. Built-in Wavemagnet* antenna. Powerful Alnico 5 speaker magnet. Superb tone. In wide selection of wonderful NEW colors! AC/DC. Model R509, as low as 19.95



THE ADVANCE AM RADIO
Powerful NEW performer with push buttons that require no stooping. They're located on TOP of set! Finger Beam Dialite spotlights each station you tune in. Handy carrying handle. Wavemagnet* antenna. Smartly styled—in thrilling new color selection. AC/DC. Model R512, as low as 41.95



ZENITH SUPER AM CLOCK-RADIO
Awaken to sweet music with this hand-somely styled new radio. Automatically turns radio on and off. Operates small appliances—acts as convenient, dependable timer. Clock hands glow in dark. In Maroon or Ivory color. AC only. Model R519, as low as 41.95
*Reg. U. S. Pat. Off.



THE ZENETTE* PORTABLE
Amazing Reception—equalled only by far bigger sets. The secret is its Iron Core Loop Antenna (in handle) plus its powerful speaker magnet. Smart colorful styling—in thrilling new colors! AC/DC or battery. Model M405, as low as 41.95

OPEN EVERY NIGHT UNTIL CHRISTMAS

Gary's JEWELERS

1322 SARTORI TORRANCE
PHONE FAirfax 8-0432

★ No Interest ★

★ No Carrying Charges ★



Dear Editor

Annexation Opposed

Editor
Torrance Press

(Editor's Note: The following letter from the Board of Education opposing the proposed annexation of parts of the Rolling Hills area was addressed to the city of Torrance which is now considering the annexation issue. Following is the school district's stand on the matter and the reasons for it)

The Board of Education wishes to go on record as being opposed, in general, to annexations to the City of Torrance, which eventually become also a part of the School District, unless it can be shown at the time of annexation that there is taxable wealth—including industry, or commercial enterprise that will carry the cost of school operation and construction.

The average house in this area brings in \$25 or so for educational purposes. It costs better than \$200 to educate a child. This is for operation costs, to say nothing of the vast capital outlay that is required for a new elementary school for about every twelve hundred homes, and a new high school. In the case of the Rolling Hills proposals that are being made, a couple of new high schools would have to be considered. There would be no place for the funds to come from, except from the taxpayers of Torrance, and the additional valuation of this property, according to the information available, would not carry its weight financially.

Elementary schools cost about half-a-million each, by the time you have paid for the site, and the fees, and the buildings, and equipped them, and you can figure high schools anywhere from two to three million each. If you put auditoriums and stadiums in them, the latter figure would be more accurate.

It takes very little figuring to realize that such a vast outlay of capital improvement for school services would be a staggering financial load for the citizens of Torrance.

Very truly yours,
(signed) J. H. HULL
Secretary, Board of Education

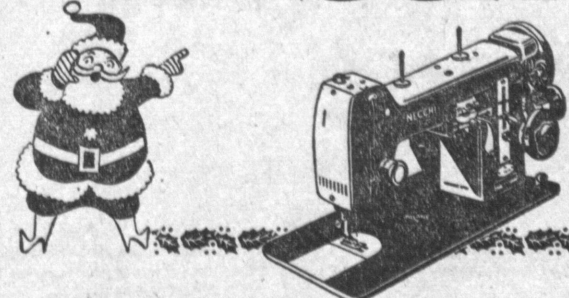
Mr. and Mrs. Robert R. Williams, of 16803 Ardath Ave., announce the birth of a daughter, Lorna Almorine, weighing 7 pounds and 3 ounces.

Mr. and Mrs. Anthony Polcarl, of 22808 Anna Ave., announce the birth of a daughter, Susan Jane, weighing 8 pounds and 10 ounces.



the automatic "does everything"

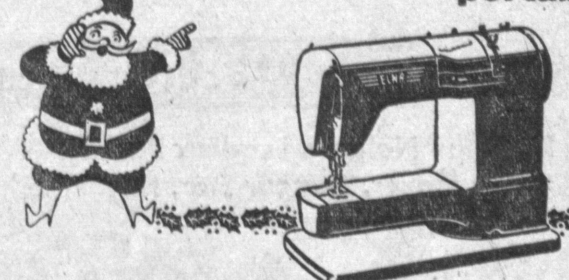
NECCHI



or the "magic brain"

ELNA

portable



From first seam to final trim the AUTOMATIC NECCHI and ELNA do every stitch of the work...Sew straight and zigzag, forward and reverse, overcast seams, blindstitch hems, hemstitch, mend and darn, sew on buttons, make buttonholes, applique, monogram, and make dozens of beautiful embroidery stitches,

ALL WITHOUT ATTACHMENTS!

There's a NECCHI to suit every home, every budget; straight stitch model BC only \$98.95

For FREE demonstration call or visit
LIBERAL TRADE-INS - BANK TERMS
M&S SEWING MACHINE CO.

1415 MARCELINA AVE. FA. 8-6137
Near Post Office) Open Friday Nights



BAKER'S ... Always Sells for Less

Terrific Savings

COTTON, DEEP PILE, LUXURIOUS

BOUCLE RUGS

WITH NON-SKID RUBERIZING

9 x 12

CHOICE OF LOVELY DECORATOR COLORS

Brown, Light Green, Off White, Beige, Lip Red, Gold, Dark Grey, Chartreuse, Rose, and Sandalwood.

24.95

Limited Quantities

ALSO AVAILABLE IN MATCHING SMALLER SIZES

6'x9'	\$14.95
4'x6'	7.95
2'x3'	1.99
24"x50"	2.99

OPEN NITES TILL XMAS

BAKER'S

1512 CRAVENS AVE. FA. 8-2778
(ACROSS FROM CITY HALL)