

ADULT BASKETBALL LEAGUE ORGANIZES

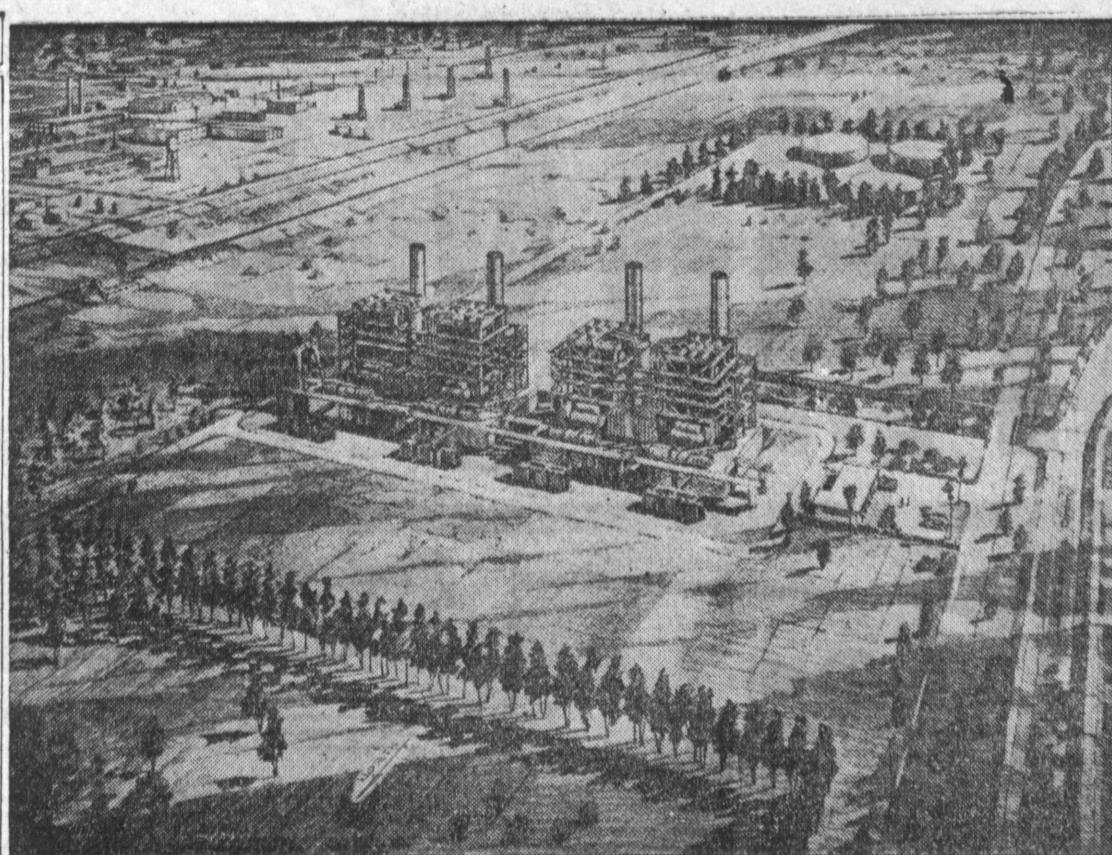
A six team adult basketball league is now organizing, according to Elmer "Red" Moon, director of athletics, and deadline for team entry fees and completed applications has been set at 5 p.m., Tuesday, December 21. Fees and applications are to be turned in at the Torrance Recreation office, 1347 El Prado.

The double round robin league play will begin January 4. Games will be played Tuesday evenings with games scheduled for 7 p.m., 8:05 p.m. and 9:10 p.m. in the boys' gym of Torrance High School.

BOARD TO MEET

The Harbor Area Evangelical Release Time Education Board will meet at the South Lomita Community Church on December 20, with the new officers in charge. President is Wayne Hennessey of Harbor City, and vice president is Mrs. Nellie Lawlor of Torrance.

Mr. and Mrs. Bully E. Adams, of 1513 Greenwood, announce the birth of a daughter, Cynthia Gale, weighing 7 pounds and one ounce.



ARCHITECT'S RENDITION OF Southern California Edison Company's Alamitos steam-electric generating station. New source of electric power for Central and Southern California, the plant will be built east of Long Beach and south of Seventh Street between the San Gabriel

River and the Los Cerritos Drainage Channel. First \$24,000,000 unit of the new station, with a capacity of 156,000 kilowatts, is scheduled for completion late in 1956. Plans call for the installation of four such units.

Mr. and Mrs. Albert LaCarra, of 228 West 238th St., announce the birth of a daughter, Josephine Marie, of a daughter, Sally Jean.

YOUR MONEY GROWS FASTER

AT SOUTHWEST SAVINGS & LOAN



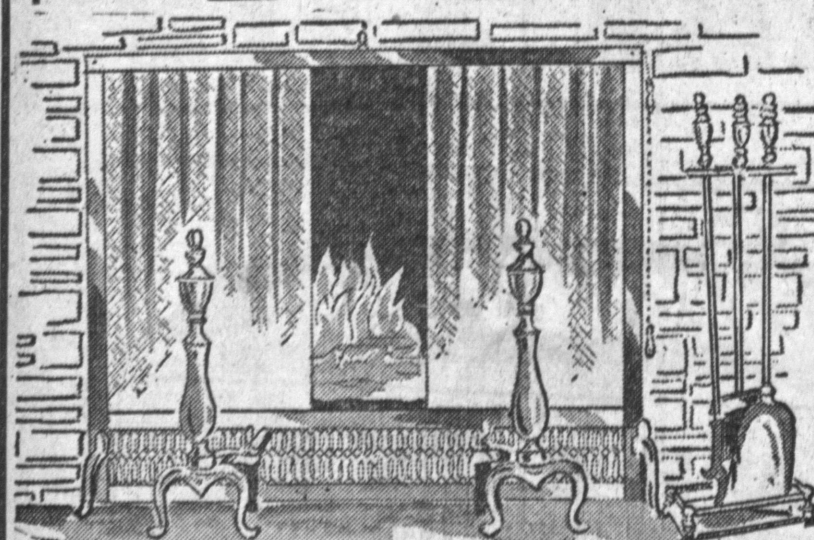
Watch your savings grow... watch your dollars prosper new dollars... when they're multiplied by Southwest's generous 3 1/2% dividends.

— an account opened by the 1st of the month earns from the 1st of the month... dividends paid quarterly... a full paid withdrawal privilege... a liberal withdrawal privilege... a full service charge

SOUTHWEST SAVINGS AND LOAN ASSOCIATION

MAIN OFFICE: 2611 W. Normandie Blvd., Inglewood, Calif. (on Normandie—just West of 9th Ave.) Phone 3-2164
TORRANCE BRANCH: 1439 Normandie Ave., Torrance, Calif. (between Carson and Sepulveda) FAirfax 8-6131

GIVE GIFTS FOR ALL THE FAMILY TO ENJOY...
Santa says...



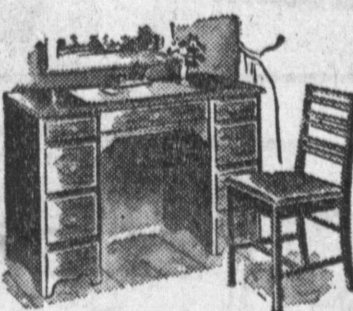
SEE OUR FINE SELECTION OF FIRE PLACE ACCESSORIES

Gifts That Are Cherished

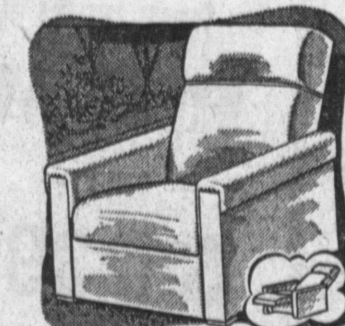
- Complete selection of small household electrical appliances—such as General Electric, Sunbeam and Westinghouse.
- Complete line of Frigidaire Appliances including stoves, refrigerators and washers. Also Wedgewood stoves & Whirlpool washers.
- Blankets
- Children's plastic and maple rockers.
- Wall brackets and mirrors
- Pictures, both modern and provincial.
- Portable phonographs and table radios.
- Olympic Televisions



Our dining room groups are fine examples of both modern and traditional. Dining group pictured above is available with either extension or drop leaf table.



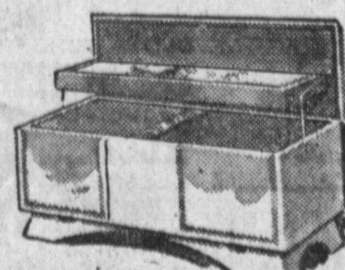
Several Fine Modern and Traditional Desks



For Dad! Rocker and ottoman, or a folding TV chair that is compact, yet gives the same comfort as conventional chairs.



Upholstered occasional chair and TV chairs make the perfect addition to the living room.



We have a good selection of Lane Cedar Chests... Choose yours early.

See our fine selection of Toys including Tricycles, Wagons, etc.

Choose from our tremendous selection of fine living room suites, featuring such famous makes as Kroehler.

ISSUED CHECK WARNINGS

Bad check warnings were issued this week by Det. Sgt. Percy Bennett.

Merchants were warned about 192 blank business checks stolen from the Superchrome Furniture company, California Maple, 911 West Pico, and drawn on the Union Bank and Trust company of Los Angeles, 760 South Hill.

The checks, light green in color, are numbered 8807 through 8999. A check writer, number 401403, was also stolen.

HARBOR DRIVE-IN
TE 48501 THEATRE TE 48501
23222 S. VERMONT AT SEPULVEDA

WED. thru SAT.
December 15, 16, 17, 18
BREATHTAKING THRILLS

COMMAND
Guy Madison - Joan Weldon

THREE SAILORS AND A GIRL
POWELL
MacRAE
TECHNICOLOR

SUN. - MON. - TUES.
December 15, 16, 17, 18

THE DIAMOND QUEEN
FERNANDO ARLINE GILBERT
LAMAS DAHL ROLAND

GLENN FORD
GLORIA GRAMME
ROBERT CRAWFORD
HUMAN DESIRE

STADIUM
Telephone FAirfax 8-6375

NOW - ENDS SATURDAY
IN CINEMASCOPE
AND COLOR
VICTOR MATURE
JEAN SIMMONS

"The Egyptian"

— also —
"Missing Passenger"

— ATTENTION —
"THE EGYPTIAN" WILL NOT SHOW SAT. MAT.
KIDNERS LOOK GALA SPECIAL SHOW SAT. MATINEE ONLY.

ABBOTT and COSTELLO
"The Noose Hangs High"

— plus —
"The Lost Tribe"

with JUNGLE JIM and
CARTOONS and COMEDIES

SUN., MON., TUES.
AN ALL LAUGH SHOW TO PUT YOU IN THE HOLIDAY SPIRIT.
EDGAR BERGEN
CHARLIE MCCARTHY
LUCILLE BALL

"Look Who's Laughing"

— and —
GROUCHO MARX
MARIE WILSON

"A Girl In Every Port"

TORRANCE
Telephone FAirfax 8-3066

FRI., SAT., SUN.
BORIS KARLOFF
"Isle of the Dead"

— and —
BELA LUGOSI
"Body Snatchers"

NIPPON SHOW
EVERY TUES. EVENING.
ALL SPANISH SHOW
EVERY WED. EVE.

CofC Board Expansion Announced

Starting with 1955, membership on the Board of Directors of the Torrance Chamber of Commerce will more than double.

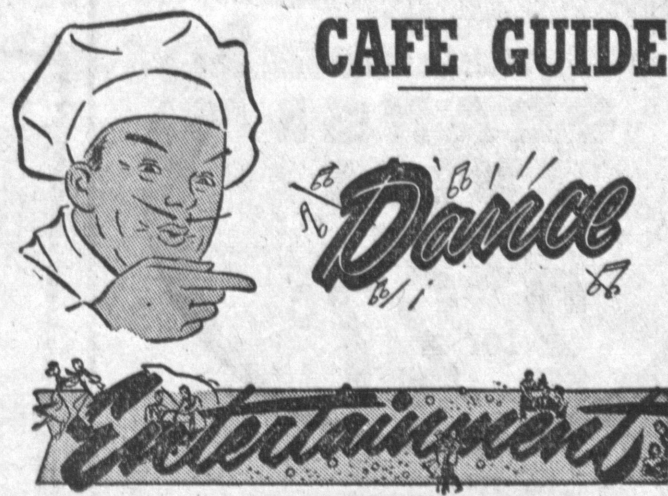
The 5-man board, which was recently expanded to six to include a member of the City Council, will add five more directors to its roster, in order to make the board truly representative of the whole of Torrance, according to Paul Lorange, Chamber president.

The directors will be chosen from the five major areas in the city, including Walteria-El-Linwood, Hollywood Riviera, North Torrance, Seaside Ranchos-Sepulveda Gardens, and Kettler Knolls.

Several individuals have been nominated to represent these districts. Election will follow shortly, Isenberg stated.

Fifth director, appointed by the four recently elected directors, is Art Otsea, vice president of the California Bank.

City Council representative is Councilman Mervin M. Schwab.



MARY'S LITTLE LAMB DRIVE-IN

Featuring Southern Fried Chicken
Favorite After-Show Eating Spot
Torrance and Hawthorne Blvds.

GEORGE'S MEAT 'N' PLACE MERRY CHRISTMAS

Serving complete breakfasts, merchant's lunch and full-course dinners. George's is where good people meet in Torrance. Sandwiches and fountain specials combined with exquisite food of large selection.

1340 El Prado — Torrance

DENVER'S PLACE

Denver's is jumping with dancing and entertainment these nights with a jam session each Sunday afternoon. Tony Anthony, Bill Drake, Frankie Pringle are featured in the band. Your host Larry Medaker. Fine food, cocktails.

On Main just south of Carson — Torrance

THE KAVERN

Beautiful private room available for parties over the holidays. Hors d'oeuvres and amorgasbord furnished. Phone for reservation.

1831 Pacific Coast Highway, Lomita
DAvenport 6-9849

SHAMROCK CLUB

Featuring Western swing music, dancing is nightly from 9 to 2, closed only on Monday, with cocktails, beer and wine served. Open daily from 11:30 a.m. to 2 a.m. this Lomita cafe is a popular gathering spot of the harbor area. "Mac" - your host

1952 Pacific Coast Highway — Lomita



RELIABLE CONTRACTORS & MATERIALS FIRMS

FENCES — REDWOOD GARDEN VILLA

House of Distinctive Redwood Fences. Attention new home owners: Bank Terms Available Now... No Waiting.

2108 Redondo Beach Blvd., Redondo Beach FR. 9-4423

BRICK — HIGGINS BRICK & TILE CO.

BRICK MANUFACTURERS
217 W. 174th, Torrance DAVIS 4-2321, Plymouth 4-9800

H & H BLDG. MATERIALS & CONCRETE PROD.

We deliver rock, sand, cement, building blocks, piers, flagstone, stepping stones, decomposed granite, paint, fencing, hardware, patio equipment — Open every day, Sat. till 1 p.m., Sun. till Noon

22208 S. Vermont Ave., Torrance FAirfax 8-4845

Between Carson & Sepulveda

KINGDON SHEET METAL

Industrial, residential, collectors, gutters, skylights, kitchen vents, exhaust fans, louvers, roof vents, coolers, sinks, ventilating. Anything in metal—Ray E. Kingdon, Mgr.

1401 Border Ave., Torrance FAirfax 8-3215

GEORGE WARE PLUMBING & HEATING

30 years experience—Automatic water heaters—New construction Repairs—All work guaranteed

2321 Torrance Blvd., Torrance FAirfax 8-7591

LANDSCAPING — HARBOR CITY NURSERY

Landscaping—Everything for your garden. Open 7 days a week. Free delivery—Retail—One of the largest nurseries in Harbor area

1615 W. Anaheim, Harbor City DAvenport 6-6440

2 blocks east of Western

SUPERIOR LUMBER & WRECKING CO.

New & Used Lumber—Licensed Building Wrecker Building Materials

24500 S. Normandie, Harbor City DAvenport 6-5146

TOOL RENTAL — CHAMPION RENTS ANYTHING

Water Pumps - Grinders - Generators
Saws - Plumbing Tools - Mixers - Compressors - Trailers

DAvenport 6-4558 2411 W. 255th, Lomita

PAINTING CONTRACTOR — A. W. STRAND & SON

Painting — Paperhanging
Decorating — 40 Years Experience
FAirfax 8-6601 FAirfax 8-5059

Terminal 3-1107

1639 West 220th Street Torrance

★ Use Our Convenient Credit Plan

★ We Carry Our Own Contracts

STAR FURNITURE CO.

2103 TORANCE BLVD., TORRANCE

FA. 8-1247