

# INGS!

5  
S. DAYS  
DAY - SUNDAY

PURE CANE  
GAR  
79<sup>c</sup>  
LB BAG

## FOOD GIANT

423 S.  
HAWTHORNE  
BLVD.  
HAWTHORNE



LIMIT RIGHTS RESERVED

### ★ GUARANTEED MEATS ★

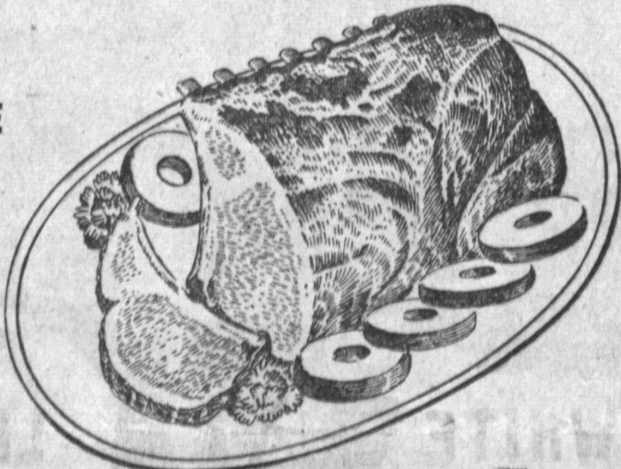
FROM STORM LAKE IOWA  
KINGAN'S RELIABLE

## PORK LOINS

FRESH! . . . NOT FROZEN

WHOLE OR HALF, NOT LIMITED TO END CUTS

Treat the family with tender, savory pork loins, cut from corn-fed baby porkers. Kingan's Reliable pork comes right from the heart of the corn belt. We guarantee the family will be pleased with these loins for Sunday Dinner.



49<sup>c</sup> lb

FRESH DRESSED  
CUT-UP READY TO COOK  
FRICASSEE

## HENS

Plump, tender, young hens that are spotlessly clean and ready to make a feast out of your favorite chicken recipe. Chicken and dumplings made with these young birds will be a meal fit for a king and cost only a few pennies a serving.

33<sup>c</sup> lb

COAST BRAND  
TENDERIZED  
PICNIC

## HAMS

4 to 6 lb. Average

It's no secret that Coast packs only under its label. You'll delight in the superb flavor of these picnics . . . slowly hickory-smoked and sugar cured they're guaranteed to make the most jaded appetites perk up and take notice.

37<sup>c</sup> lb

BONELESS CROSS RIB

Our own special cut. A superbly fine grained boneless roast is cut from the tenderest portion of the beef shoulder. U.S. Choice and Good Steer Beef. This roast cooks and carves beautifully.

59<sup>c</sup> lb

FARMER  
STYLE SPARE RIBS

Here is the answer for rib lovers who don't like their spare ribs too spare. These are specially cut from the pork loin and are loaded with tender, lean meat. Talk about putting some meat on your ribs — we're the ones who have done it.

43<sup>c</sup> lb

KINGAN'S SLICED BACON

Kingan's Circle K. Who has to tell you what you already know? Best way to start the day is with bacon and eggs — especially when it's hickory-smoked, sugar-cured Circle K.

49<sup>c</sup> lb

BEEF HEARTS

More and more of our customers are discovering that for an economical meal you can't beat beef hearts stuffed with your favorite bread dressing. There's a lot of nourishment in beef hearts.

19<sup>c</sup> lb

CORNER BEEF

Food Giant's own secret sugar-cured boneless brisket of beef. Here is an item that we like to boast about. It is as perfect a corned brisket as can be found. Never salty, needs no par-boiling and has no little shrinkage that people accuse us of Sanforizing it.

43<sup>c</sup> lb

JUMBO SHRIMP

Another shrimp lover's special! Big, firm, tasty shrimp that grew up in the warm waters of the Gulf of California and spent their vacations at Guaymas & Acapulco. About 15 shrimp to the lb.

69<sup>c</sup> lb

LUX SOAP  
TOILET SOAP

3 Reg. Bars 23<sup>c</sup>

LUX LIQUID  
DETERGENT

16 oz. Can 39<sup>c</sup>

RINSO  
DETERGENT

Large Box 29<sup>c</sup>

LIFE BUOY  
DEODORANT SOAP

3 Reg. Bars 23<sup>c</sup>  
2 Bath Bars 23<sup>c</sup>

LUX FLAKES  
FOR FINE THINGS

Large Box 29<sup>c</sup>

SPRY  
SHORTENING

One Pound Can 33<sup>c</sup>

SAVE 37<sup>c</sup>  
47¢ NEW IPANA or IPANA 1/2  
Plus 59¢ TEK DELUXE TOOTH BRUSH  
Limited Time Only 69

KAL KAN  
HORSE MEAT

Tall Can 21<sup>c</sup>

THOROFED  
DOG FOOD

2 for 29<sup>c</sup>

## Foreign Students to Address Wood P-TA

A Pre-Christmas trip through foreign countries will be experienced by members and friends of the Howard Wood Elementary P-TA, Thursday evening, December 2, at 8 p.m. when two students from El Camino College will follow the theme, "Christmas in Many Lands."

This interesting topic will be covered by a student from India and another student from France, said Mrs. Dana Houston, program chairman. The students will describe the types of festivities during a holiday season "overseas," their mode of living, and other highlights of interest. This meeting will be held at the school and child care will be provided, it was announced by Mrs. Gordon Jones, publicity chairman.

Following the talk, cake and coffee will be served under the direction of the hospitality committee. Hostesses will be the second grade room representatives, Mmes. I. Engstrom, Fred Wise and J. Wigg.

### Baskets to Needy

Following last week's board meeting, Mrs. W. E. Dickson, welfare chairman, delivered three Thanksgiving baskets for needy families. Mrs. Paul Crossman, character and education, announced that one Brownie troop and possibly two will be formed during this week, and a Cub Scout troop is also in the planning stages, with Arthur Lauer and W. E. Walton holding an organizational meeting Wednesday evening at the school.

## MRS. HALL ELECTED

A new member P-TA joined the school, the next meeting slated for the evening of December 15. Meadow Park School draws its enrollment from Torrance Heights, Coral Manor, and the fast-growing area east of Sea-Wednesday of each month at side School.



HOME IMPROVEMENTS  
last a lifetime  
made with

READY-MIXED CONCRETE  
QUICK DELIVERY ANYWHERE  
BY FAST, COURTEOUS OPERATORS

## AZUSA ROCK & SAND CO.

Ph. FAirfax 8-6705

1347 W. 208th — TORRANCE

## Electrical GIFTS from NICOLA'S

Now...COFFEE THE WAY  
YOU LIKE IT Every Time!



New  
AUTOMATIC  
COFFEE MAKER

The beautiful, new G-E Automatic Coffee Maker brews coffee to your taste. Indicator light tells you when "coffee's ready". Makes 2 to 9 cups. Only 29<sup>50</sup>

SEE OUR COMPLETE SELECTION OF  
G.E. SMALL APPLIANCES INCLUDING:

- Steam Irons
- Sandwich & Waffle Grill
- Portable Mixers
- Master Mixer
- Toasters
- Dry Irons

## NICOLA'S

Torrance's Largest T.V. and Appliance Dealer  
1875 W. CARSON, Torrance FAirfax 8-7025

## At Least \$100 TRADE-IN on the NEW 1955 G. E. ULTRA-VISION LO-BOY



• The New Look in TV—first really new design since the TV Console. Come in and see it. In modern blond oak or lustrous hand-rubbed walnut.

Phyllis Avery, featured with Ray Milland for G.E. in "Meet Mr. McNulty."

### FULL YEAR PARTS WARRANTY

Prices  
Start at \$149<sup>95</sup>

OPEN EVERY NIGHT UNTIL 8:30 P.M.

## NICOLA'S T. V. AND APPLIANCES

1875 W. CARSON (Across from Torrance Laundry) FA. 8-7025

• Easy Stand-Up Tuning. Tune it standing up—no awkward crouching. View it at your normal reading angle.

• New Larger 21-inch Tube. Gives 202 sq. in. (not just 220 or 250). The largest 21-inch screen in TV!

• Clearest Picture in all TV. Over 100,000 shoppers compared G-E Ultra-Vision with other leading makes side by side. They voted G-E TV best by over 7 to 1.

• G-E is the world's first 21-inch TV with an aluminized picture tube. Gives up to 100% whiter whites. And G-E's exclusive black-tinted glass gives 5 times blacker blacks.

Highway 101, Hawthorne