

Gary Graffman, Noted Pianist, To Stage Concert Here Monday Night

The district and fashion show on November 20 at the Statler Hotel in Los Angeles, will be attended by local members of Woman's Club Juniors and their guests. Mrs. John Kemp, federation coordinator is in charge of tickets and reservations.

Maternity
Complete Care
Delivery + \$150
Days Hospital
Licentiate Medicals No.
N. B. ETTINGHAUSEN, D.P.M.

Boys And Girls May Phone For Xmas Tryouts

In order to accommodate the many boys and girls wishing to perform in the Christmas program planned for Christmas week by the Torrance Recreation Department, application for try-outs will be taken over the phone at the Recreation Office—FAirfax 8-4108.



KEY FIGURES in the West's largest residential and recreational development at Rancho Palos Verdes are William Kulow (left) resident manager for the Capital Company, and Ivar O. Hanson, general manager for Palos Verdes Properties. They are shown going over plans for the 7000-acre development, which will become one of the nation's most completely integrated communities when the master-plan is put into effect.

Hanson, Kulow To Handle 7000 Acre Rolling Hills Development

The two key figures in handling the day-to-day operations of the giant 7000-acre Palos Verdes Properties recreational and residential development in Rolling Hills will be Ivar O. Hanson, general manager, and William Kulow, Capital Company's resident manager, it was announced today by company officials.

Hanson, who has held posts in the offices of Secretary of the Navy, Secretary of the Interior and National Security Resources Board, will be in charge of the operating staff at the property, which includes most of Palos Verdes peninsula.

He has been most recently an executive with the Great Lakes Carbon Corporation, which about a year ago acquired a major portion of the stock of the Rancho Palos Verdes Corporation, previous owners of the property.

Hanson has participated in the planning of the huge project since its acquisition.

Kulow, who will be in charge of sales at the property, is identified as resident manager of the Capital Company, a subsidiary of Transamerica Corporation and the partner of Great Lakes Carbon Corporation in the purchase of the property.

Considerable interest has been evidenced in the announcement that the property is soon to be opened for development. Hanson and Kulow have pointed out that much basic work will be required, however, before actual sales to individuals can be effected. This will include the extension of public utility lines to the parts of the peninsula that will be opened first, including sewers, water-mains and electrical transmission

lines.

Vast Area

With the vast property to be developed comprising an area as large as Beverly Hills and Westwood combined, the operating company is faced with the necessity of opening partial areas on a successive basis. The task of converting acreage into completed residential areas will require the services of some of the Southland's most experienced land sub-dividers, according to the management. Negotiations are under way with several top-flight men in this field at the present.

Meanwhile the master-plan for the several areas that will make up the nation's most completely-controlled community is being developed by Pereira & Luckman, nationally-known architects and engineers. Several new concepts in a wholly-planned community will be announced before major development steps are taken.

Moderate-Price Homes
Because of the extremely large size of the property, it will be possible to have moderate-priced homes in some areas, larger homes and estates in other areas, and shopping and commercial activities centered where they will be convenient to the entire area, the management stated. In the overall plan, the cultural and recrea-

JOINT YOUTH-BAND AND ARTISTS' CONCERTS START

The first of a series of Joint Youth Band-Artists concerts will be given Monday night, November 15, in the Torrance Civic Auditorium at 8:15 p.m. Featured soloist who will play the second half of the concert is Gary Graffman, gifted young pianist.



GARY GRAFFMAN ...

The first half of the program will be played by the Torrance Area Youth Band, featuring the music of Rossini, Richard Wagner, and the Mexican composer, Texidor.

Don Stolz, young Julliard Scholarship student, will be trumpet soloist on the band's share of the concert. Graffman's program includes the Sonata in F major by Mozart, the Sonata in B-flat minor of Chopin, Elegy by Rachmaninoff, and the La Campanella (The Little Bell) by Paganini - List, according to Ethel Derouin, concert chairman.

Numerous Appearances
Graffman is making numerous appearances with the Los Angeles Philharmonic while on the west coast. Besides his appearance in Torrance on the 15, he plays the Prokofiev Concerto in two appearances at the Philharmonic Auditorium this week, Sunday night he plays the Tchaikovsky piano concerto on the Standard Hour. He also plays with the orchestra in Santa Barbara on Nov. 30, in Pasadena on December 1, in San Diego on December 2, and in Long Beach on December 5.

Other Concerts

Other concerts scheduled on the Youth Band-Artists Concert series are February 12, with Leontyne Price, soprano; April 21, with Camilla Wicks, violinist; and the Band's "Anniversary" concert on May 24. Season tickets for the four concerts can be purchased at the general headquarters office at 1327 Post avenue, or at the box office on Monday night. Only season ticket holders will be admitted to the concerts. Ethel Derouin is General chairman of the concert series.

DOCTOR SAYS DANNY KAYE, AND MANAGER BEAT HIM

While Dr. Roland Marks, 51, of 26 Rocking Horse Road, Rolling Hills, complained to police that he was beaten by Film Comedian Danny Kaye and his business manager, Kaye claimed that the whole affair did not warrant calling a policeman.

Dr. Marks said the beating took place during an argument Sunday night outside International Airport Terminal. He said that Kaye got a headache on him while Edward Dukoff, 45, the actor's business manager, struck him in the ribs.

Dukoff said that "the whole thing is ridiculous. It is exaggerated. The man has made something out of nothing. There was no physical violence and I think it is silly. Danny would tell you the same thing."

Raymond J. Pillow, 37, of 2032 1/2 Andreo, claimed this week that he was the victim of a robbery in broad daylight during the busy hours of the day Saturday in the downtown shopping district.

Raymond claims that he returned to his car parked before Lovelady's Hardware store on Carson around 5 p.m. As he got ready to drive off, the robbery suspect, who had been allegedly hiding in the back seat, poked a gun at his head and told Raymond to drive where he was told and he wouldn't get hurt.

Raymond states that it took him two hours to struggle free. Lt. Carl Friberg claims that he and other patrol cars patrolled the area regularly several times during the time that Raymond said he was there and that at

No. Torrance Slates Feed For Saturday

A Community Get-Acquainted Breakfast will be held Saturday, November 13, between 9 a.m. and noon at McMaster Hall, 174th st. and Yukon. The breakfast is sponsored by the North Torrance Civic Improvement Association.

Proceeds from the breakfast will go toward financing the various community activities sponsored by the civic association.

no time was there a parked car in sight. The claims are being investigated further, Det. Capt. Ernie Ashton stated.

TORRANCE BUYER'S GUIDE

BAKER'S T.V. & APPLIANCE

T.V.	Washer & Dryer	REFRIG.	RANGE
Admiral	Philco	Blackstone	Gaffers Sattler
RCA - GE	Frigidaire	Crosley	Western Holly
Philco	Blackstone	Philco	Repar
Crosley	Bendix	Admiral	Elec. Ranges

1344 El Prado - Torrance - FA. 8-6606

Oma's Liquor & Delicatessen

Dairy Products -- Groceries
Unusual Foods
1954 W. Carson. Open 6 a.m. to 2 a.m. FA 8-0111

Torr. Cycle and Sports Shop

COMPLETE LINE OF ATHLETIC EQUIPMENT
RODS - REELS - GUNS and TACKLE
Mercury Motors - Schwinn Bicycles - Locks - Keys
REPAIRING OF ALL KINDS
1421 Marcelina - Torrance - FA. 8-6912

PARRISH STATIONERS

OFFICE OUTFITTERS
Globe-Wernicke Furniture - Royal Typewriters
Portable Typewriters - All Makes - Electric Shavers
1423 Marcelina - Torrance - FA. 8-6074

VAN'S MATTRESS & UPHOLSTERING

CUSTOM BUILT FURNITURE OF ALL KINDS
UPHOLSTERING - DRAPERIES - CORNICES
FOAM RUBBER MATTRESSES
2083 Torrance Blvd. - Torrance - FA. 8-3352

TOP HAT CLEANERS

WE OPERATE OUR OWN PLANT
OPEN 8 A.M. to 6 P.M. CLOSED SUNDAY
FREE PICKUP AND DELIVERY
2218 Torrance Blvd. - Torrance - FA. 8-2713

SMART MONEY

with utmost safety
SHORT TERM—1-2 YEARS
Secured on professionally appraised real estate equities.
Value up to 300% of loan.
EARN 10% INTEREST
R. A. OWENS
1309 Post Avenue, Torrance
FA. 8-2300

BURKE'S BARGAIN SPOT

BABY FURNITURE
Complete Line of "Baby Line" and "Thayer", Strollers • Carriages • Potty Chairs • Rockers • Feeding Gates • Play Pens • Tricycles • Wagons • Etc. All At Bargains!
2113 Torrance Blvd. at Cravens - FA. 8-0596

TIRED OF PAYING THE PREMIUMS? SEE FOUR STAR PURCHASING CO.

Furniture - Appliances - Television
For Homes - Hotels - Institutions
At Real Discount Prices!
24421 Narbonne - Lomita - DA. 6-4848

PLATT T-V SALES

\$19.95 for NEW PICTURE TUBE
Installation \$5.00 on Our New Service Plan - 21" Slightly Higher
2153 LOMITA BLVD., LOMITA - For Information Call DA. 6-6515

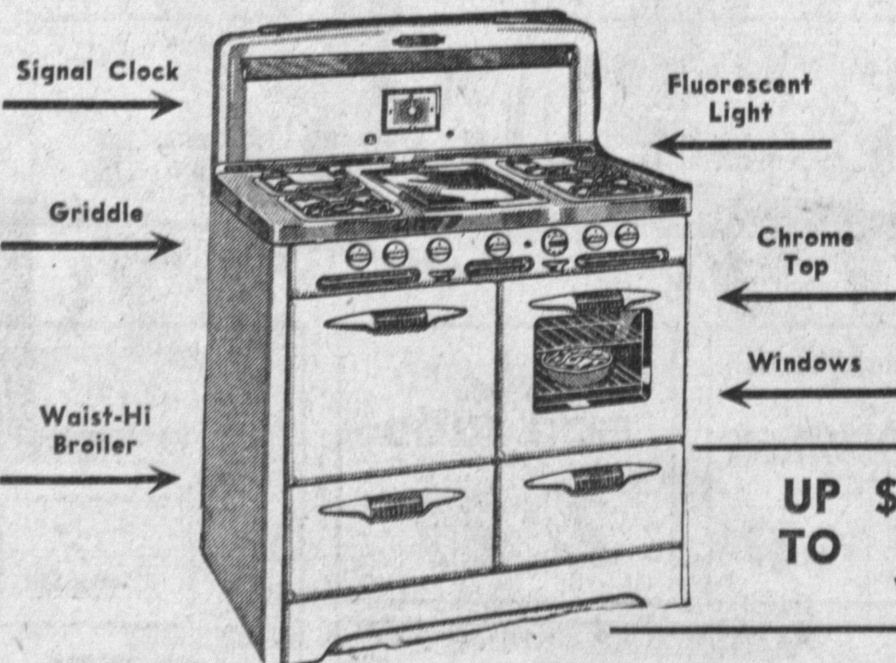
JESS TELEVISION

SALES & SERVICE
For Prompt, Reliable Service Call
Gar Radio Service—Drive In
DA. 6-1201
23433 So. Western Ave. at 234th Street

PAINT THEM YOURSELF AND SAVE!

Quality Furniture That You Can Finish Yourself, Furniture For Every Room In Your Home. With These Quality Products. We Give You Free Expert Advice to Obtain the Finish You Desire.
COMPLETE UPHOLSTERING SERVICE
EASY TERMS IF DESIRED
H & H UPHOLSTERY
24303 Narbonne - Lomita - DA. 6-2020
Open Friday Eves.

Sensational Value - Brand New TAPPAN GAS RANGE



UP TO \$100 TRADE
WITH QUALIFIED TRADE-IN

FREE TURKEY

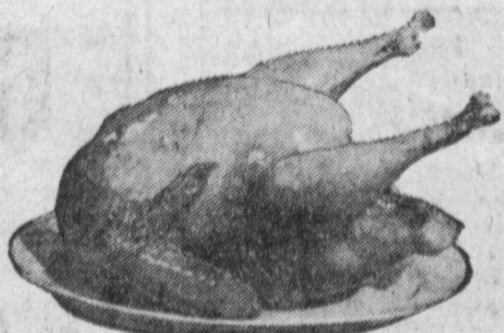
To anyone purchasing a New Tappan Gas Range between now and Thanksgiving

OPEN EVERY NIGHT UNTIL 9 P.M.

TORRANCE HEATING & APPLIANCES

1613 W. CARSON, TORRANCE

FA. 8-4747



LOOK!

BEST BUYS - BEST PRICES IN
NEW & USED
FURNITURE

CHROME SETS

5 PIECE
ALL BRAND NEW
\$39.50
EASY TERMS

Maple Chests

5 Drawer - Brand New
Reg. \$24.95
\$14.95

USED - Good Condition - Sterilized
Box Springs & Mattresses \$7.95 ea.

MAHOGANY DINING ROOM
SUITE, Excellent Condition..... \$4950
TABLE and 5 CHAIRS - DUNCAN PHYFFE

LAMPS ALL COLORS..... \$4.95

Room Size Rugs
and Wall to Wall
CARPETING
\$2.95
SQ. YD.

MAPLE KNEEHOLE
DESK
7 Drawer - Perfect Condition
\$22.50

LINOLEUM RUGS 9x12..... \$7.95

PLATFORM
ROCKERS
ONE \$17.95
ONLY

Hide-A-Bed
Innerspring Mattress
\$69.50

9:30 A.M. to 5:30 P.M. FRIDAY NITES TILL 9 P.M.
WEEKDAYS SUNDAY, 10 to 4

WE BUY - SELL - TRADE

LOMITA Galleries

2015 Pacific Coast Hwy., Lomita

DA. 6-5772