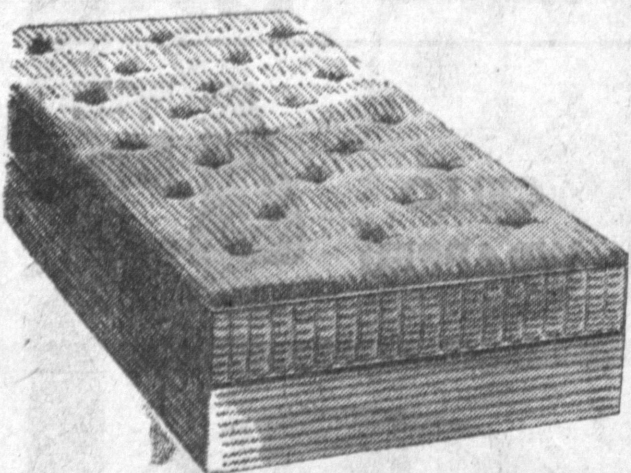


BRAND NEW INNERSPRING MATTRESS and BOX SPRING

\$14.95 REG. PRICE \$24.95 ea.
EA. sets only
SENSATIONAL VALUE. Both Pieces Covered With Durable Covers
CHOICE OF FULL OR TWIN SIZE

**WHY PAY
REUGLAR RETAIL PRICES
WHEN YOU CAN
BUY DIRECT FROM US
AND SAVE 50%**



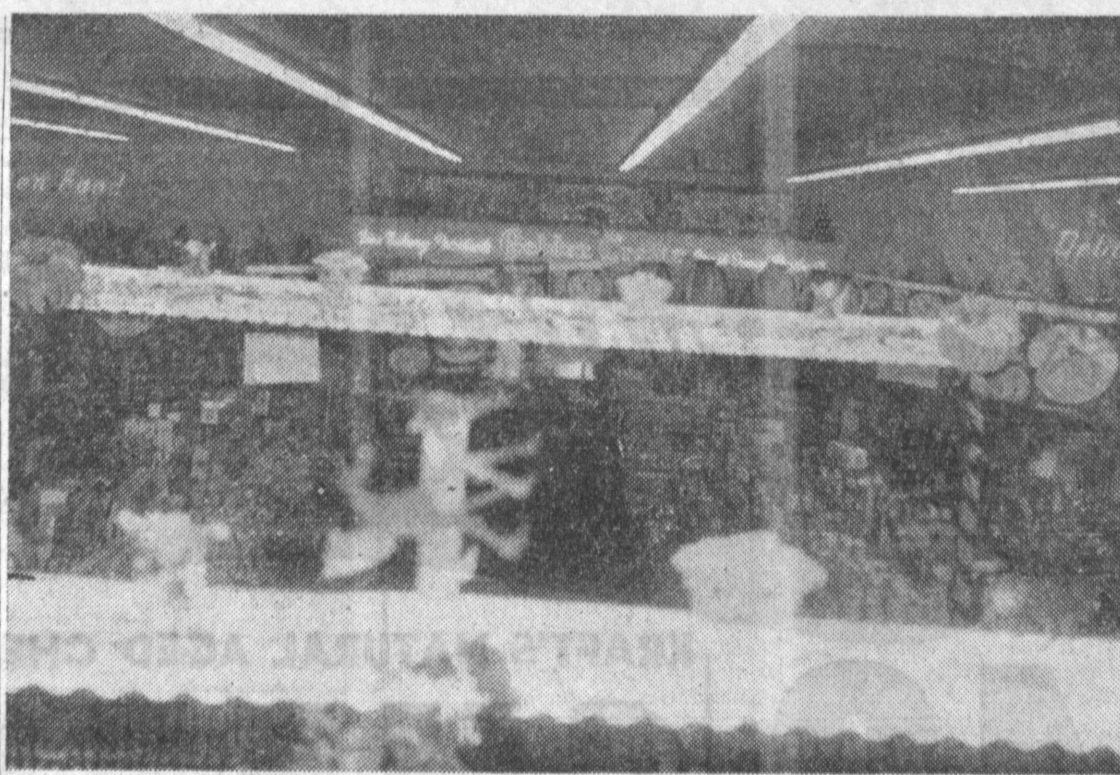
E-Z TERMS

Open Friday Nite

Nobody—But Nobody Undersells

**Health-O-Pedic
MATTRESS CO.**

2 CONVENIENT SALESROOMS
1877 W. Carson TORRANCE FA 8-1712
520 N. Pacific Coast Hwy. REDONDO BEACH FR 4-8333



SPACIOUS — The extensive interior of the grocery department at the new local Clark Market, Hawthorne ave. and Pacific Coast Highway, is shown in this bird's eye view of the rows on rows of values to be offered during the grand opening sale starting today and lasting through and including Sunday.



LIKE MAGIC . . . This Fuller Color Mixing machine can duplicate any color exactly and is capable of producing 5000 different color shades. It is the latest service offered at John's Paint store, 1413 Cravens ave. Demonstrating the machine is John Hogan, store owner, while Joan Stewart, sales girl, looks on amazed.

John's Paint Store Features New Color Mixing Machine

A new color mixing service, the only kind in this area, is being offered as one of the newest features at John's Paint store, 1413 Cravens, in conjunction with the store's anniversary celebration.

The famed Fuller Color Mixing Machine has just been installed at the store. It is capable of producing 5000 colors and shades just exactly to order in any kind of finish (exterior house paint, stucco, enamels, rubber base, and others).

System Perfected
The system has been worked

out to perfection, according to John Hogan, owner of the store. An individual comes in and picks out a color from the color chart. There is a formula which corresponds to that color, and the machine then mixes the paints according to that formula.

Re-orders of any paint can now be duplicated exactly with this machine.

The store also has available a color planning center which provides complete information as to the best color schemes for all types of decorating.

The color-mixing system is based on the newest 1955 colors designed by leading authorities and approved by leading architects throughout the country, according to Hogan.

These Fuller colors have been recommended by "House and Garden" magazine as being the most popular colors of 1955, Hogan stated.

Sale
John's will have a store-wide sale tying in with the anniversary celebration. On special will be floor coverings of all types, major brands of paint, painters' supplies, and all types of ladders.

"We've sold a whole carload of ladders in the last three

Nursery Licensing Set-Up Questioned

Editor,
Letters to state agencies in regard to the nursery home licensing setup presently prevailing in Torrance have been to no avail. We have not had the courtesy of an answer as yet.

The Guys and Dolls Nursery located on Arlington Avenue in Torrance is experiencing difficulty in securing a renewal of their license to operate as a day camp for our children. The fact that this nursery is in operation is important to us.

My wife can work only because the children are properly provided for.

The treatment and care they have received has been exemplary and we can see no reason why an impartial investigation cannot be made to deem their fitness to operate. The existing agencies seem to be incapable of this impartial observation.

We believe that this matter is important enough to a number of people that a complete and thorough investigation of the controlling agencies should be made.

Yours very truly,
(signed)

Mr. and Mrs. Glen L. Musso,
1810 Schilling Drive,
Torrance, California.

Mr. and Mrs. S. Earle Peterson, of 4421 High Grove Ave., announce the birth of a son, Mark Sherman, weighing 7 pounds and 6 ounces.

Clark Market Feature Super Produce Dept.

Fruits and vegetables found at the new Clark's market holding its grand opening today at Hawthorne Ave. and Pacific Coast Highway will be farm-fresh at all times.

The produce is picked in the wee hours of the morning right out on the fields and is rushed to the Clark super markets moments before opening time.

New modern methods of trimming and handling in the store guarantees the utmost in freshness throughout the day.

High volume and low prices is the policy of Clark Markets produce departments, a practice that has eliminated the necessity of carrying over any produce that has passed its peak of perfection.

JAIL CIGARETTE BURGLARY SUSPECT ON DOPE CHARGE

A suspect who may be connected with the recent \$12,000 local cigarette burglary has been arrested on a narcotics charge and is presently being held by the Sheriff's office, according to Det. Sgt. Percy Bennett.

Jeff Potts of 3129 Dennison street, San Pedro, was picked up by Compton police when he was found trying to sell cartons of cigarettes for one dollar at various service stations.

A possible link between those cigarettes and the recent Vend-a-Pack burglary here was suspected though the suspect has not confessed to any tie-in.

Potts, allegedly a dope user, was turned over to the Sheriff's narcotics squad. Potts had numerous needle marks on his arm.

Paul's Chevrolet Sells Pick-Up Truck To City

A 3/4-ton pick-up truck was purchased by the city from Paul's Chevrolet, lowest bidder, in the amount of \$1282.16 plus sales tax, after allowance for trade-in of a 1948 Dodge pick-up.

Mr. and Mrs. M. M. Shenkel, of 22815 Catekill Avenue, Wilmington announce the birth of a daughter, Donna, weighing 9 pounds and 11

BEST OF SUCCESS TO CLARK'S NEW MARKET IN WALTERIA

WAGNER CONSTRUCTION CO.

General Contractors

BRadshaw 2-2795 437 S. Robertson Blvd.
Beverly Hills, Calif.



A & F SUPPLY
Complete Line of Plumbing and Electrical Supplies
BUILDING BLOCKS - FLAGSTONE - CEMENT
1306 PACIFIC COAST HWY., Harbor City DA. 6-3951
We Give S & H Green Stamps



DON'T LET DEATH TAKE THEIR HOLIDAY

**THIS IS THE YEAR'S MOST DANGEROUS DRIVING SEASON IN
TORRANCE - CHILDREN MAY BE CARE-
LESS . . . DON'T YOU! GIVE THE KIDS
A BRAKE!**

- ✓ Don't drive while drinking — 29% of traffic deaths involve drinking drivers;
- ✓ Have your car checked for brakes, headlights, tires and all mechanical defects!
- ✓ Speed kills — you may be racing to an accident — slow down!
- ✓ Obey traffic laws. They are made for your protection!
- ✓ Above all — be alert. Death never takes a holiday!



WARNING TO PEDESTRIANS

"Pedestrians, protect yourselves by thinking for two, the driver and you."
During 1953 there were 785 Californians who failed to heed this axiom of traffic safety and paid with their lives.

"Pedestrian deaths accounted for almost one-fourth of all traffic victims in the state last year," declared California Highway Patrol Commissioner B. R. Caldwell, "and in many cases the victim was misled by his own feet."

TORRANCE OCTOBER TOLL

61 COLLISIONS
23 INJURIES
1 DEATH

30 DRUNK DRIVING
ARRESTS

This Space In Torrance Safety Campaign Provided by This
Public-Spirited Firm, In Civic Interest

NATIONAL ELECTRIC PRODUCTS CORP.
TORRANCE, CALIF.

Motorola COLOR TV



MODEL 19CT1. Mahogany finish console. 2 matched speakers. Glare-free Modern/Slant design. UHF optional, extra.

Phone FA. 8-1721

810 NAME SHOWS
IN COLOR NOW!
Leading networks have
almost 1000 hours
scheduled. Local
shows, too!

Yes — One of the first 25 color television sets sold is going to be given away absolutely FREE. This is not a contest — no strings attached. The lucky person may be YOU! So stop in and ask for full information. No obligation.

Open Every Night 'Til 8 P.M.
Open Friday Nights 'Til 9 P.M.

**TORRANCE
TV
COMPLETE HOME APPLIANCE**
1629 CRAVENS - TORRANCE