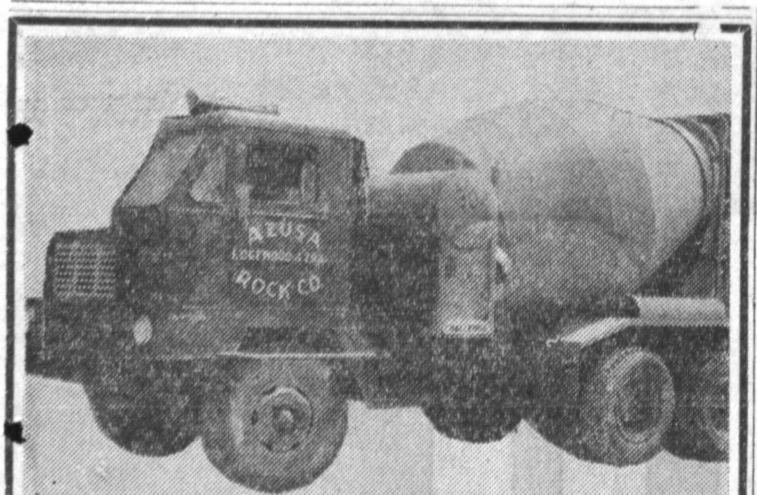


Teen-age volleyball for both boys and girls is played every Monday from 8 p.m. to 10 p.m. at Lomita Park, 24428 Eshelman ave.

A chess club for youngsters and oldsters is being formed at Lomita Park, 24410 Eshelman and is now meeting on Tuesday nights, 7 p.m. to 10 p.m.



**HOME IMPROVEMENTS**  
last a lifetime  
made with  
**READY-MIXED CONCRETE**  
**QUICK DELIVERY ANYWHERE**  
BY FAST, COURTEOUS OPERATORS

**AZUSA ROCK & SAND CO.**  
Ph. FAirfax 8-6705  
1347 W. 208th — TORRANCE



**JAYCEE DINNER TONIGHT**... Torrance Jaycees will be hosts to the district's eight clubs tonight at a dinner meeting to be held at Alan Richard Hall from 7:30 to 11 p.m. W. C. Weaver, head chef (center), will lend his professional hand to the meal. Trying to help "cookie" is Mike Goettich, general chairman (right), while Fred Hansen, president, is already "real gone" in anticipation of the meal.

**RUMMAGE SALE AT CENTRAL CHURCH**

The Ladies' Guild at Central Church are holding a rummage sale today and tomorrow, October 21 and 22, at the Guild Hall on the corner of Arlington and Marcelina. The doors will open at 9 a.m. and close at 5 p.m. both days. Co-chairmen of the money-raising project are Mesdames Alice Spolteger and Maud Lock.

**Sales Force Expanded At Paul's Chevrolet**

The staff of new car salesmen was doubled this week at Paul's Chevrolet in anticipation of the new Chevrolet models which will be on display next Thursday as well as to keep up with the rapid growth and growing needs of Torrance.

The new car sales force at the Chevrolet agency located at 1640 Cabrillo is being expanded from six to 12 salesmen, according to Paul Loranger.

All new '55 Chevrolet models will feature a new conception in motoring, Loranger stated.

Girls' sports are played at Lomita Park, 24410 Eshelman every Saturday morning from 10 a.m. to noon.

**Firestone BRAKE SPECIAL**

HERE'S WHAT WE DO... **350 Value**  
**119** ANY CAR  
1. Inspect Lining  
2. Clean, Repack Front Wheel Bearings  
3. Add Brake Fluid  
4. Inspect Grease Seals  
5. Adjust Brake Shoes  
6. Test Brakes

**Firestone**  
The Big Firestone Corner  
At Marcelina & Cravens Ave., Torrance  
Phone FA. 8-7881 Torrance

**Ultra-Modern Mobilgas Station Opens**

One of the largest and most modern stations in the Southland area is now open for business at the corner of Torrance boulevard and Hawthorne avenue. The giant Mobilgas station is owned by Jack Waters who resides in Kettler Knolls with his wife and two boys. Assisting Waters is brother Johnny who plays professional baseball, and Shorty Skelton. Waters has another brother who is well-known locally, Bob Waters, who works at Oscar Maples, local Ford dealer. Although the station is now open for business, proprietor Waters is holding off the grand opening pending completion of the road work being done on Hawthorne avenue.

Volleyball for teen-age boys and girls is played at Lomita Park, 24410 Eshelman every Monday night from 8 p.m. to 10 p.m.

**ON DISPLAY FRIDAY!**

Sensationally advanced  
**1955 STUDEBAKERS**

**STEPPED UP IN POWER!**  
**STEPPED UP IN STYLE!**  
**STEPPED DOWN IN PRICE!**

*Come in!  
See them today!*

New 175 h.p. President V-8  
New 140 h.p. Commander V-8  
New 101 h.p. Champion

**FRANK H. AFTON CO. Inc.**  
FLORENCE AT MARKET  
OR. 1-7783 IN DOWNTOWN INGLEWOOD OR. 8-4005

**FURNITURE CLEARANCE**  
**BIGGEST SAVINGS EVER**

USED PIECES GOING AT LESS THAN MANUFACTURER'S COST  
PRICED TO CLEAR — ONE OF A KIND

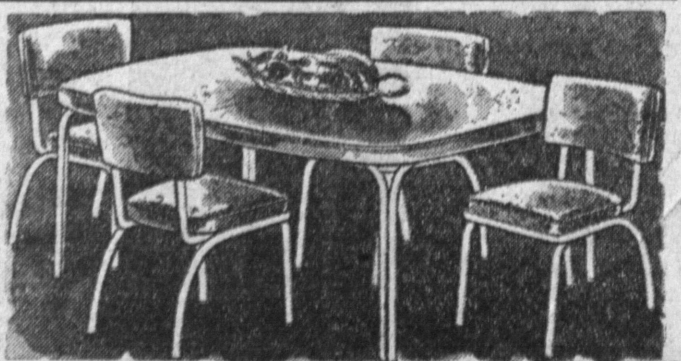
**TWIN BEDS** 3 to. Choose From... **\$4.95**

Full Size Box Spring or Innerspring  
**MATTRESS** Used but in good condition Sterilized... **\$7.95** UP

**MAHOGANY DESK** A Beauty  
Worth \$49.50—Grab this one quick — ONLY **\$19.95**

DROP LEAF CHROME  
**KITCHEN TABLES** For work—Chrome Legs Formica tops **\$14.95** UP

**25 TO CHOOSE FROM**  
5-Piece Chrome Dinettes  
Choice of colors — Some Chairs with 2 colors—Reg. \$99.50.  
**\$39.50**  
EASY TERMS



**TABLE LAMPS** **\$4.95**  
All Colors—All Kinds

**4-PIECE BEDROOM OUTFIT** **\$39.50**  
Walnut—Bed, Dresser & Mirror, Chest—Good condition.

**USED REFRIGERATORS** **\$39.50** UP  
All Makes—Coldspot, Norge, Frigidaire, etc.

**USED WASHERS** **\$10.00** UP  
All Makes—Norge, Maytag, Kenmore, etc.

**NEW MAPLE 5-DRAWER CHESTS** reg. \$24.95 **\$14.95**  
EASY TERMS

Loads and loads of new bedroom, living room, kitchen and patio furniture  
ALL AT LOWER THAN USED PRICES

9:30 A.M. to 5:30 P.M. WEEK DAYS WE BUY — SELL — TRADE FRIDAY NITE 'TIL 9 P.M. SUNDAY 10 TO 4

EASY CREDIT TERMS **LOMITA GALLERIES** 2 YEARS TO PAY  
2015 Pacific Coast Highway, Lomita DA. 6-5772

**Westinghouse**

TV SETS ARE GETTING INTO MORE HOMES  
EVERY DAY AND NO WONDER!

**24 INCH TV**  
FOR ONLY  
**\$299.95**

**BIG TRADE-INS**  
OPEN MONDAY thru FRIDAY  
Till 9 P.M.  
ALSO ALL DAY SUNDAY



**THE MONTEREY**  
New 24 Inch Beauty At A Low, Low Price  
You Can Afford.  
Model 875T24 — In Walnut  
Available in Blond or Mahogany

**GRIFFEY ELECTRIC**  
212 SO. PACIFIC AVE. REDONDO BEACH

FR. 22616 — FR. 42616  
FOR IMMEDIATE DELIVERY