

A blueprint reading course will be offered at Torrance

Evening High School, Room 124, on Tuesday and Thursday evenings from 7 to 10 o'clock, beginning Tuesday, Sept. 21. Under the direction of Lloyd D. Brady, tool engineer at Na-

tional Supply Company, the class is open to anyone interested in learning to read engineering or architectural blueprints.

Dorothy Johnston Hall has been appointed as elementary teacher for the 1954-55 school year by the Torrance Unified School District.

PAY BILLS BY  
**CHECK**  
CONVENIENT • SAFE

MEMBER FEDERAL DEPOSIT INSURANCE CORPORATION

California Bank

Los Angeles

Torrance Office, 1329 Sartori Avenue, Arthur O. Otsea, Vice President; James W. Post, Vice President

## Church News

### New Pastor To Be Greeted At First Christian Church

Members of the First Christian Church at 2930 El-dorado street, will welcome their new pastor this Sunday. The Rev. Harry Milton Sippel, coming from an eight-year ministry to the First Christian Church of Lawrence, Kansas, will deliver his first sermon this Sunday, September 19, in the fast-growing Torrance church.

The Rev. Sippel and his wife, Georgia, are New York natives, and have three children—two daughters, one in college and one in high school, and one son who is in grade school.

The new pastor received his A.B. at Mercer University in Macon, Ga.; his M.A. from Vanderbilt University in Nashville; and his B.D. at Drake

University in Des Moines. He received his certificate of pastoral counseling from Andover Newton Theological Seminary at Newton Centre, Massachusetts.

Rev. Sippel succeeds Rev. Walker, who bade farewell to his congregation last Sunday upon the eve of his retirement.

### Betsy Ross Club to Meet

The Betsy Ross Club will hold its meeting next Tuesday, September 21, at the home of Letha Smith, 719 Columbia place. A luncheon will be served at noon.

### South Torrance To Organize Ball League

South Torrance is to have its own Pacific Coast League according to plans which were outlined by President Al Marzilli, 156 Via Las Miradores, as a meeting held in El Retiro Park Thursday night. The new league will accommodate Little League baseball players from all of Torrance which lies south of Highway 101.

An attempt is being made by the Field Procurement Committee, headed by Vince Hebson, to acquire a site for a little league park in the immediate vicinity so that many of the players can walk to games and practice.

Meetings are to be held weekly until further notice in order to get all arrangements complete before the next season. It is anticipated that the Pacific Coast League will have four major teams and as many minor teams as are necessary so that all boys who want to play baseball can be accommodated.

The Women's Auxiliary held a meeting simultaneously with the new group and started plans for the concession handling.

Other committee chairmen appointed by President Marzilli are Bill Simpkins, sponsors; Norri Hawkins, playing equipment; Bill Brooks, umpires, scorekeepers and statisticians; Bill Simpkins, managers; Don Whitney, publicity.

### Altar Society Bake Sale Set Tomorrow

The March guild of the Nativity Altar Society under the chairmanship of Mrs. Thomas Fitcher, will hold a bake sale tomorrow, Friday morning, September 17, from 9 a.m. to 3 p.m. Homemade baked delicacies will be on sale in front of the Gay Shop, 1319 Sartori avenue.

Mrs. Fitcher asks all who are bringing baked goods for sale to have their donations at the Gay Shop before noon on Friday, the day of the sale.

### Billy Graham Film

"London Crusade," the film depicting Billy Graham's evangelistic mission in England, will be shown at the First Baptist church, 1715 Martina avenue, Friday, September 17, at 7:30 p.m., it was announced this week.

### Royal Neighbors Bazaar

The Lomita branch of the Royal Neighbors of America held a bazaar yesterday from 4 p.m. through the evening at the VFW Hall on Lomita boulevard. Mrs. Virginia Shekell was chairman of the affair.

### Les King says It's a Fact



### And We Can Show It!

"Ye" In Old English Does Not Mean "You" or "Your"

It means "the," and was so pronounced without any "y" sound. In Anglo-Saxon there was a symbol now written as "th" but which was represented by "y". In consequence the correct pronunciation of "ye" is "the".

We do mean "YOU" when we say you need the right amount of insurance. An important part of our job is to help you plan a program . . . without obligation on your part.

**TORRANCE FAIRFAX 8-7102**  
**TORRANCE GENERAL INSURANCE**  
LIFE AUTO FIRE  
1407 MARCELINA AVE.

### HEALTH MATTRESS & MATCHING BOX SPRINGS

#### E-Z CREDIT

REG. \$29.95  
VALUE EACH

**18<sup>45</sup>**

Sets Only

- Posturized Innerspring Units
- Hundreds of Tempered Steel Coils
- Double Sisal Insulation
- Durable Covers and Handles

21 YEARS  
EXPERIENCE  
Satisfaction  
Guaranteed

#### Choice of Full or Twin Size

KING SIZE and QUEEN SIZE BEDS

HOLLYWOOD BEDS • BED FRAMES

**BUY DIRECT FROM US  
AND SAVE UP TO 60%**

• EASY TERMS •

Open Friday Nites Till 9:00

Nobody—But Nobody Undersells

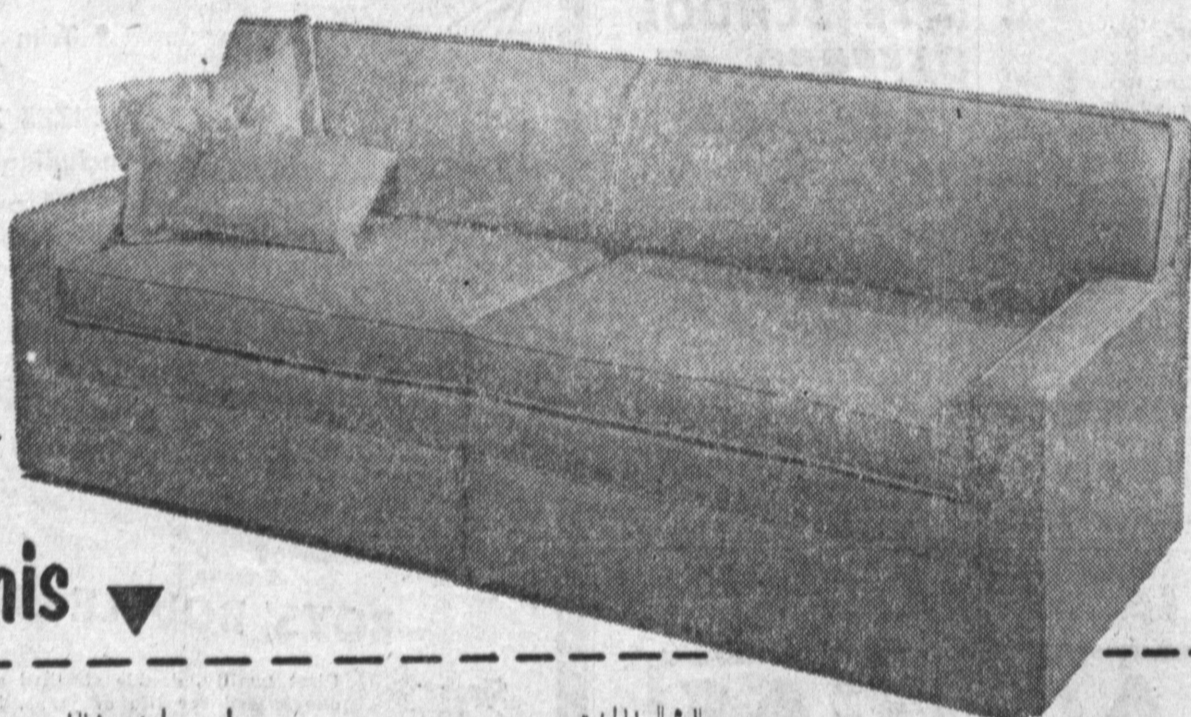
**Health-O-Pedic  
MATTRESS CO.**

1877 W. Carson Torrance  
FAirfax 8-1712—Near 5 Points Inter.

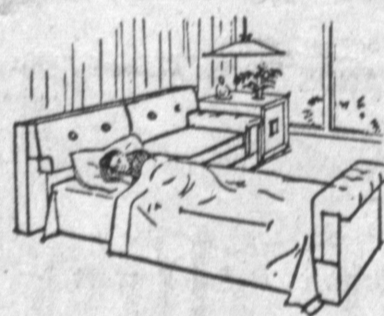
Alpert's

# NEVER BEFORE!

a sofa-sleeper  
that looks  
like this .....



and does all this ▼



SINGLE BED



REMOVABLE TWIN BEDS



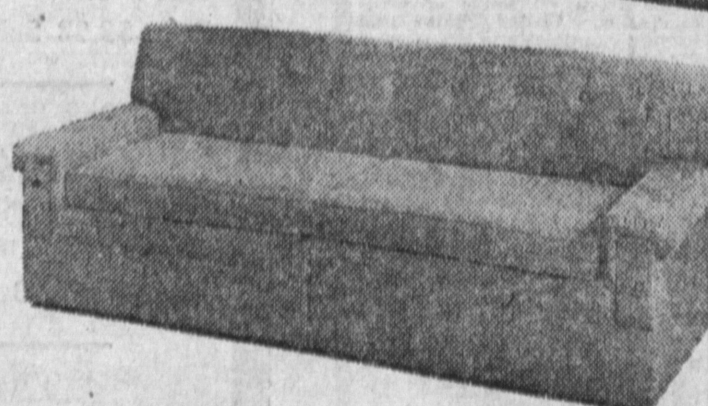
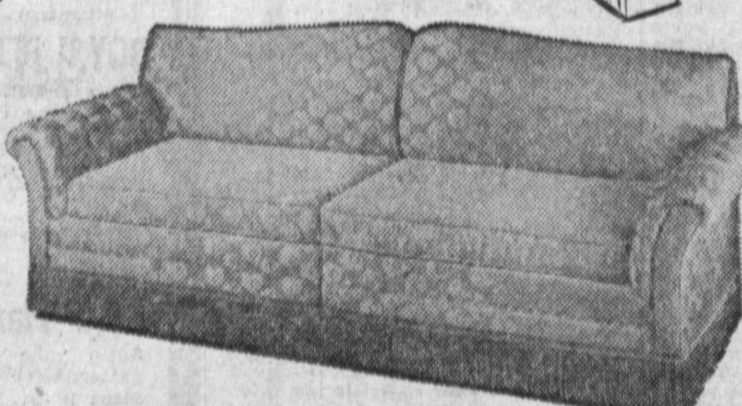
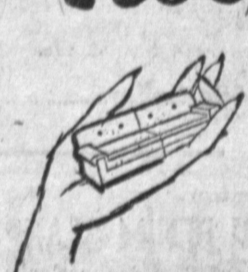
DOUBLE BED



DOUBLE CONTOUR CHAIR

## Turn-a-Bed

turns into a bed  
with the turn of a hand



Here is the sofa-sleeper you've been waiting for . . . with such handsome styling, no one need ever know there are beds inside. It's the most desirable dual-purpose sofa ever designed. Your overnight guests will be thrilled with its comfort and versatility. You will be delighted with its fingertip ease of operation. No cushions to remove . . . no heavy weights to lift! But words can't describe its amazing adaptability to your needs. Come in and see it . . . work it . . . own it!

#### FOAM RUBBER

to sit on . . . to sleep on!

Such luxury! Foam-rubber cushions when used as a sofa . . . foam-rubber mattresses—either soft or firm, as and when you choose.

Many styles and fabrics to choose from  
as little as **\$299.00**

TERMS . . . OF COURSE

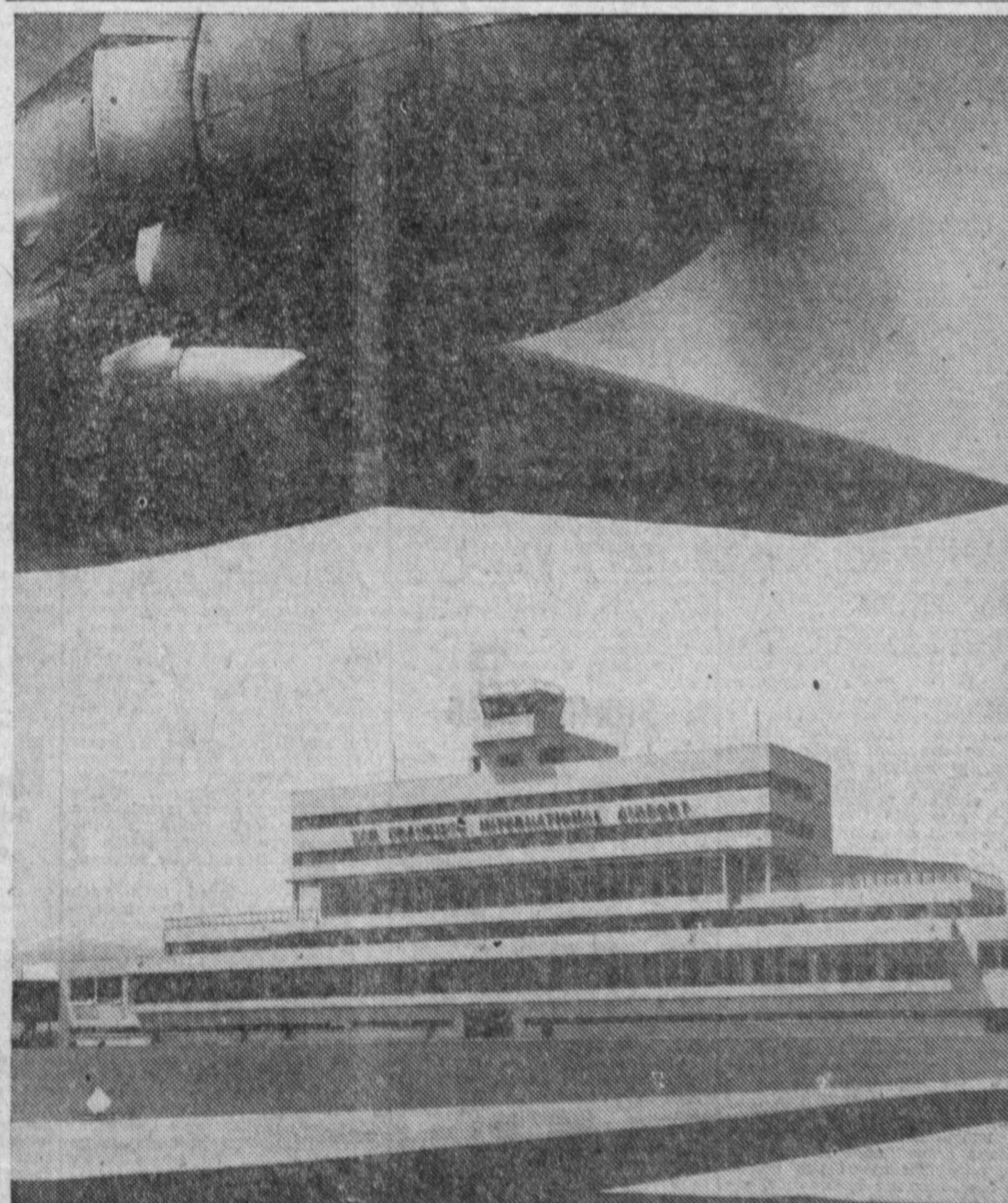
OPEN MON. & FRI. EVES. TILL 9 P.M.

Alpert's

## TRENDMAKER FURNITURE

2067 Torrance Blvd., Torrance

FA. 8-6990



Flight operations begin at new air terminal. San Francisco's new International Air Terminal—one of the world's finest—opened recently. Among its ultramodern features is a vast network of communications services specially designed by telephone people. It includes a dial system for 500 telephones . . . 80 teletypes . . . 70 public telephones . . . enough wire to stretch from San Francisco to Manila. And we designed it for easy, economical expansion in the future. For that's part of our job of bringing you good, low-cost service. Pacific Telephone works to make your telephone a bigger value every day.