

## It's A Boy For Former Press Editor

A six pound 4½-ounce Brian William presented himself to Mr. and Mrs. William McDonald of 11875 W. Jefferson Blvd., Los Angeles, this week. The first addition to the McDonald tribe staged his grand entrance at 5:43 p.m. Sunday,

September 12, at the California Lutheran Hospital in Los Angeles.

The mother is the former Patricia Roden who served as assistant editor of the Torrance

Press before her marriage. The father is an aircraft engineer for Hughes Aircraft.

McDonald is the son of the late Mr. and Mrs. William McDonald of Lomita. The infant's maternal grandparents are Mr. and Mrs. E. J. Roden of Beaumont.



ring it right!

**BEGINNING SEPTEMBER 19  
TO PLACE A CALL**

from a Davenport or Fairfax telephone

to ● **LONG BEACH**—Dial 81, then dial the Long Beach number desired.

● **WHITTIER** (OXford numbers)—Dial the first two letters and the numeral of the prefix, and then the four remaining numerals.

**Pacific Telephone**

Charges for these calls will remain the same, when dialed, as when placed with the operator.

Four-party services will continue to place toll calls with the operator.

## TRADE IN YOUR OLD FURNITURE

**NOW!** 9-PC. Luxury Modern

**Living Room Group**



REG. 229.95  
**\$189**  
PAY \$3 WEEKLY

**REDUCED PRICE**

**FINEST "AWARD" STYLING**

AT BUDGET PRICES  
YOU GET THE LOVELY 2 PIECE SECTIONAL  
AND OTHER PIECES AS LISTED

A fine sectional piece in fresh, new, appealing LURALEX - METTALON FABRICS - NACHMAN Spring Units, Rubberized HAIRFLEX Padding, Reinforced Hardwood Frames—All Add Up to the Biggest Dollar Value in Years.

- 2 Pc. Sectional Sofa
- Modern Corner Table
- Large China Table Lamp
- Matching Coffee Table

● **FREE - PLASTIC T.V. CHAIR! AN \$11.95 GIFT FOR YOU**

**FREE**

With Purchase of Group!

**BUDGET TERMS to SUIT your PURSE! up to 2 yrs. to pay**



**MR. & MRS. DRESSER**

In Bleached Oak or  
Seafoam Mahogany

REG. 59.50

**\$39.95**  
MIRROR EXTRA

These Were a Sellout Last Time. Shop Early.

MATCHING PIECES  
AVAILABLE AT LOW  
SALE PRICES!

Your  
Out-of-State  
**CREDIT**  
Is  
**"GOOD"**

## REALTOR OF THE WEEK

### Only A Corporal In Army He's 'General' In Business

As a soldier he didn't do too well and finally emerged after many months of service as a corporal. But in the business world Gerald L. Alter has done right well. In fact, among the more than 50 employees he now has are many who far outranked him in service. But the Realtor of the Week doesn't exercise "rank" in his operations and this is one reason he has been expanding operations.

Among the salesmen on the Alter Realtors payroll are a former Lt. commander, Lt. colonel, five captains, nine lieutenants and several sergeants.

Born in Indiana, Gerald L. Alter, now 44 years old, has been a resident of Torrance since 1936. He became a general building contractor in 1939 and a realty broker in 1946 after his discharge with a rank of corporal.

In 1948 he opened his first branch office and now has 12 branches, including two in Long Beach and one in Sunset Beach.

The Alter Building company was incorporated in 1947 and the Alter Realty and Insurance company in 1949 and Gerald was named president of both. In 1952 he became director and secretary of "Leads, Incorporated," an investment group.

He is listed in "Who's Who on the Pacific Coast" in the 1950 and 1954 issues, is a member of the Long Beach Board of Realtors as well as boards of Torrance-Lomita, San Pedro and South Bay.

Main office of the company is at 1436 Marcelina avenue, opposite the postoffice, in Torrance.



GERALD L. ALTER  
... different story now

Beverly J. Long has been employed by the Torrance Unified School District as supervisor of cafeterias.

### Jeanette Harris Enters Redlands

Three hundred and fifty-two new students, including Jeanette Harris, 1007 Acacia avenue, have been admitted to date for the fall semester at the University of Redlands, Dr. Warren Mild, director of admissions, announced today.

Miss Harris is the daughter of Mr. and Mrs. Marvin L. Harris, attended El Camino J.C., will be a freshman with an education major.

Phyllis W. Henderson has been employed by the Torrance Unified School District as a clerk-stenographer.

## Elmer Connett Passes Away

Elmer S. Connett, father of Perry Connett, local realtor, died September 14. The elder Connett was a resident of Torrance for four years, where

upon he moved to Yucaipa, California.

He is survived by his wife, Grace, and two sons, Perry Connett of Torrance and Earl Connett of Hollywood.

The funeral will be held Saturday at Stone and Myers mortuary in Torrance.

Mr. and Mrs. J. Cellini of 4725 Reynolds Dr., Torrance, announce the birth of a daughter, Susan Josephine Cellini, weighing 7 pounds and 8 ounces.

## NOW IN TORRANCE! COLONIC TRIAL TREATMENT \$3

Introducing to the people of this area the famous Dierker Therapeutic Apparatus, which is generally acknowledged to be the most effective way of removing toxic poisons from the Colon.

Remember, no Colon therapy, no matter how complicated, has ever cost more than \$5.00 in this office. The trial treatment is only \$3.00 and includes X-ray fluoroscopic examination, as well as urinalysis.

Poisons that remain in the body can cause cirrhosis of the liver, jaundice, biliousness, gall-stones, colds, asthma, arteriosclerosis, hypertension, bladder trouble, nervousness, headaches, rheumatism, peptic ulcers, colitis, appendicitis, sleeplessness and many other disorders.

**Don't delay, phone this ultra modern office today for an appointment.**

**Torrance Chiropractic Center**

1110 SARTORI AVE.

FA. 8-3738

We Are Just 3 Doors North of Torrance Blvd.

## QUALITY LUMBER

Specials Thurs. thru Sun., Sept. 16 to 19

Outside all purpose	PAINT	LUMBER	REDWOOD PICKETS
White	1 Gal. \$1.89	2x4 Studs	2 in. 6c ea.
Gal.	20c ea.	2x4 8-ft. Culls	2 1/2 in. 8c ea.
		2x4 Douglas Fir	3 in. 11c ea.
		Random length	3 1/2 in. 13c ea.
		1/2x2 Redwood	4 in. 15c ea.
		1x2 Redwood	4 in. 15c ea.
		2x3 Redwood	4 in. 15c ea.
			Redwood Log Oil \$2.39 gal.
			Wood SHINGLES \$8.75

REDWOOD FENCES—All Clear Dry Boards—Material Cut to Size—F.H.A. Terms  
WE ALSO CARRY A COMPLETE LINE OF HARDWARE, PAINTS AND BLDG. MTLs.  
OPEN DAILY 8:30 A.M. to 5 P.M. SUNDAYS 10 A.M. to 2 P.M.

**AFFILIATED LUMBER COMPANY**  
1849 TORRANCE BLVD. TORRANCE FA. 8-2124  
(1 Blk. N.E. of Chrysler-Plymouth Dealer)

35

OTHER  
SETS  
AT  
REDUCED  
PRICES  
...



COLONIAL

**MAPLE BEDROOM SUITE**

YOU GET ALL THIS

- DOUBLE DRESSER
- MATCHING FRAMED MIRROR
- BOOKCASE HEADBOARD
- TWO NIGHT TABLES

ONE LOW PRICE

**\$99.00**  
PAY \$2 WEEKLY

**combining high quality and savings!**

30" UTILITY  
ROLLAWAY  
BED  
COMPLETE  
AS SHOWN

**\$19.95**

PAY \$1 DOWN \$1 WEEKLY

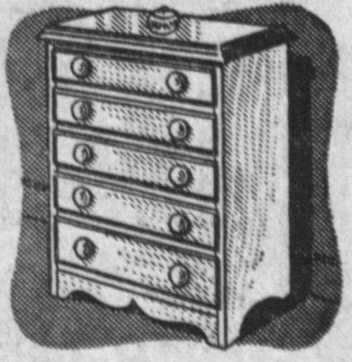


5 DRAWER  
CHESTS

Sturdy — All Select  
Cabinet Woods

**\$19.95**

PAY \$1 DOWN \$1 WEEKLY



**UNIVERSAL FURNITURE STORES**

PHONE FA. 8-3073

1317 SARTORI

TORRANCE

INSTANT  
TERMS  
•  
EASY  
CREDIT