

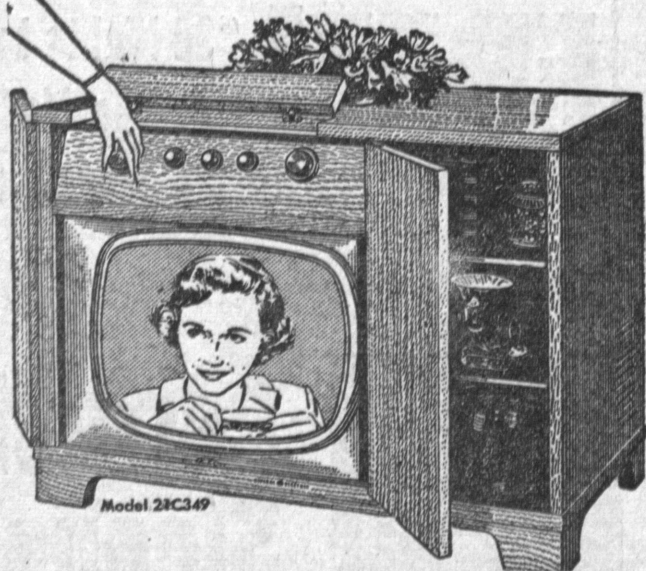
# CRYSTAL CLEAR!



U  
L  
T  
R  
A  
•  
V  
I  
S  
I  
O  
N

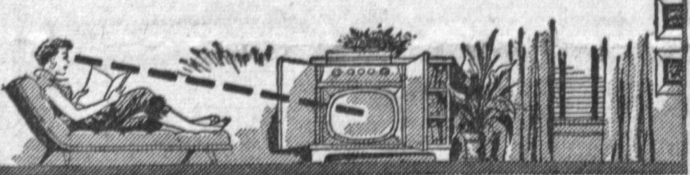
## ULTRA-VISION LO-BOY

• The New Look in TV—first really new design since the TV Console. Come in and see it. In modern blond oak or lustrous hand-rubbed walnut.



Model 28C34P  
LESS THAN \$8.89 PER WEEK

CORRECT FOR VIEWING—NEW IN STYLING



• **Easy Stand-Up Tuning.** Tune it standing up—no awkward crouching. View it at your normal reading angle.

• **New Larger 21-inch Tube.** Gives 262 sq. in. (not just 220 or 250). The largest 21-inch screen in TV!

• **Clearer Picture in all TV.** Over 100,000 shoppers compared G-E Ultra-Vision with other leading makes side by side. They voted G-E TV best by over 7 to 1.

• **G-E is the world's first 21-inch TV with an aluminized picture tube.** Gives up to 100% whiter whites. And G-E's exclusive black-tinted glass gives 5 times blacker blacks.

## Your TRADE-IN is TOPS

We give you top value for your old TV. We have a market for older models and can offer you more on trade.

OPEN  
EVERY NIGHT  
'TIL 9 P.M.

"YOUR GENERAL ELECTRIC HEADQUARTERS"

# T. V. STUDIO

2223 TORRANCE BLVD., TORRANCE

FA. 8-3371

## ★ Church News ★

### Court St. Catherine Board Plans Annual Garden Party

A board meeting was held last Monday night at the home of Mrs. William Hardesty, 23021 Huber drive, as Court St. Catherine committee members gathered to discuss the forthcoming fashion show being sponsored by the Torrance Catholic Daughters.

The tickets are all ready for the September 23 event, which will feature a dessert luncheon and fashions from the Gay Shop and Guys 'n' Dolls children's store. The lovely affair will be staged at 12:30 in the garden of Mrs. Laura Felker, at 1010 Beech avenue, and the public is welcome. Models will show fall suits, sportswear, afternoon styles, and children's styles from kindergarten through high school.

Co-chairmen on the garden party are Mesdames Lawrence Derouin, Gerald Loew, and Leroy Armstrong.

Mrs. Frank Gately, grand regent, presided at the meeting which was attended by Court St. Catherine board members

Mesdames Hardesty, Frank Cavanagh, Thomas Moore, Joseph Terkmany, Lyle O'Hara, and the three garden party co-chairmen.

### Retreat At Monastery

A group of ten men from St. Andrew's Episcopal Church will be leaving for Santa Barbara to attend a retreat from September 10 to 12 at the Mount Calvary Monastery.

Mr. and Mrs. Elmer W. Eichelberger of 432 East 219th St., announce the birth of a son, Kenneth Clyde, on Aug. 19 at Torrance Memorial Hospital, weighing 5 pounds and 10 ounces.

## Les King says It's a Fact



And We Can Prove It!

Edison Did Not Invent The First Electric Lamp!

The first electric lamp was invented July 18, 1859, by Professor Moses Gerrish Farmer, of Salem, Mass.

We don't know who thought up the bright idea of insurance. But it is a bright idea for you to be sure you have enough insurance to protect both your home and your business.

**TORRANCE FAIRFAX**  
8-7102

**TORRANCE GENERAL INSURANCE**  
LIFE AUTO FIRE

**1407 MARCELINA AVE.**

**3½%**  
PER ANNUM  
CURRENT  
RATE

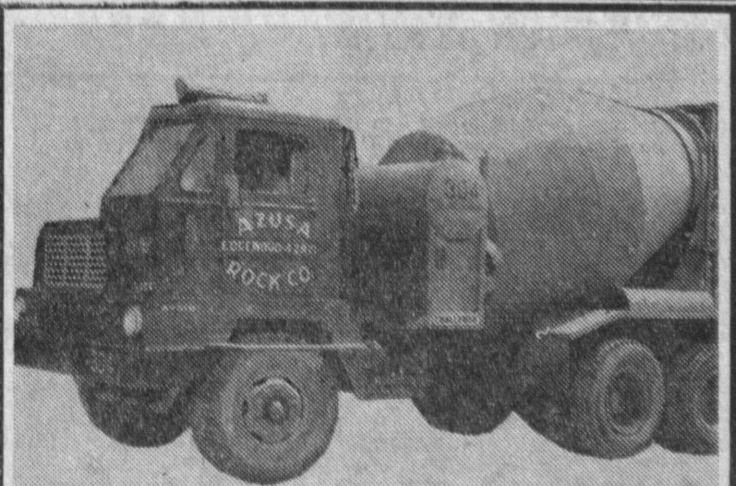
**STOP  
SPENDING**

START SAVING NOW  
FOR THE FUTURE

- \* Your account is insured to \$10,000.
- \* Accounts opened by the 10th of any month earn from the 1st.
- \* Save conveniently by mail.
- \* We remain open until 7:30 p.m. on Friday evenings for your convenience.

**Southwest SAVINGS AND LOAN ASSOCIATION**  
1439 Marcelina Ave. Torrance, FA 8-6111

WHERE ALWAYS PAY  
OUR OFFICE  
1439 MARCELINA AVE.



HOME IMPROVEMENTS  
last a lifetime  
made with

**READY-MIXED CONCRETE**  
QUICK DELIVERY ANYWHERE  
BY FAST, COURTEOUS OPERATORS

## AZUSA ROCK & SAND CO.

Ph. FAirfax 8-6705

1347 W. 208th — TORRANCE