

MORE CLASSROOMS, SCHOOLS PLANNED IN TORRANCE

Parents To Visit Schools

A special invitation will be extended to all parents to meet with the teachers of their children some time during the first few weeks of school.

These meetings are intended to answer questions and to help parents get acquainted with the teacher of their children. Torrance schools arrange for parent meetings with the classroom teacher. At this time the teacher will explain the program of the class; interpret local school policies; discuss plans for the year; and ask for questions from the parents.

Parents have reported that this early get together with teachers has been helpful. Parent-teacher Associations cooperate with the schools in these meetings.

WAR ON PRICES OUT THEY GO!!!

Every Pair in the Store at this give away price

LADIES BETTER...

SHOES

VALUES TO 22.95

INCLUDING SUCH FAMOUS BRANDS AS
• Joyce • Deliso Debs • Accent • Trim Treds

LADIES FALL...

HANDBAGS

LOVELY NEW FALL BAGS IN SUEDES - PATENTS - PLASTICS. Loads to Select from

HEADQUARTERS FOR
Back-to-school SUPER BUYS!

BOYS' DOUBLE KNEE JEANS \$1.19 PAIR
First quality, double stitched seams, rugged. Knees guaranteed for life of jeans. Limit 2—so everyone can get theirs.

Boys' - Girls' SURPRISE TABLE
THESE VALUES WILL REALLY AMAZE YOU
• Shirts • Girls' Handbags
• Shorts • Jackets
• Play Wear • Loads of Other
• Jumpers • Miscellaneous Items
EVERY ITEM at ONLY 50¢ EACH

BOYS' ARGYLE SOX 4 pr. for 88¢
Combed cotton sox in true diamond argyle patterns. Nylon reinforced heel & toe.
Reg. 49c Seller.

BOYS' DENIM SLAX 1.00
Yes, seersucker denim slacks by a famous maker. Hurry for these.
Pre-Ticketed at \$2.98

Boys' Flannel Shirts 1.88
Satin yoke lined in smart patterns for the young man. Sizes 10-16.
Reg. \$2.98 Seller.

BOYS' PAJAMAS 1.88
Sanforized fine cottons. Plaids, stripes, fancy patterns. Sizes 4-16.
Reg. to \$3.98

Boys' Bomber Jackets 3.99
All styles, colors, fabrics, sizes. Exceptional values because of special purchase.
Values to \$8.95

OPEN FRI. & MON. EVES 'TIL 9 P.M.
LORDS "WAR ON PRICES"
FOR THE LADIES' & CHILDREN
8801 SO. VERMONT

Twenty-seven elementary classrooms will be made available for use for the first time this year with the opening of the Meadow Park school. The Meadow Park school will have 12 classrooms and an administrative unit to serve the area south of Sepulveda, avoiding some triple sessions at the Seaside school.

Two new classroom wings will open at Walteria and Riviera. Each wing contains 4 classrooms and rest room facilities.

Four bungalows have been moved onto the Carr site and three bungalows were moved to El Nido to help relieve some of the ever increasing enrollment.

Under Construction
Two schools are now under construction but behind schedule due to the labor difficulties encountered in the building industry the last few months. The Crenshaw school, a pre-cast, tilt-up concrete project, is well along. The plant consists of 14 classrooms and an administrative unit and a multi-purpose room. This project is being totally financed by the Federal Government. The Hillside school is being framed at this time. It contains 12 classrooms, a utility room, and an administrative unit.

Two complete schools are on the drawing boards at this time. The Carl Steele school, which will help to house a portion of the large subdivision west of Hawthorne between Del Amo boulevard and 190th street, will be ready for State Division of Architects' approval in the near future. This is also a federally financed project and will contain 18 classrooms, a multi-purpose unit, and an administrative unit.

The Pacific school, which will serve the large Ellinwood development south of Pacific Coast highway as well as a portion of Hollywood Riviera, is also on the drawing boards. This school will contain 19 classrooms, a lunch patio, and an administrative unit.

Portable Classrooms
In addition to the above projects, the Board has authorized the preparation of plans for portable classrooms to be built at the following schools: Perry school, two double classroom units and a double kindergarten unit; North Torrance school, two double classrooms and a double kindergarten unit; Seaside school, three double classroom units, a double kindergarten unit, and a lavatory unit.

The Board of Education is also in the process of procuring additional school sites in newly developed areas as funds become available.

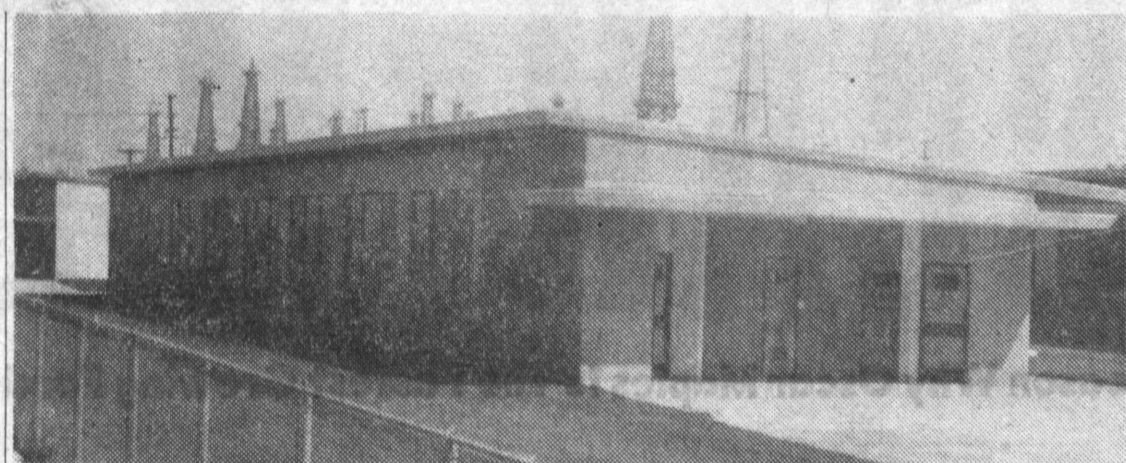
Don Kellogg Graduates From Non-Com School

Pvt. Donald E. Kellogg, son of Mr. and Mrs. F. F. Kellogg, 1544 West 206th street, Torrance, recently was graduated from the 27th Regiment Non-Commissioned Officer Academy in Korea.

An ammunition specialist in the regiment's Company M, Kellogg received instruction in leadership of units, map reading and other military subjects.

The 21-year-old soldier entered the Army during January 1954 and arrived in Korea three months ago from Fort Ord, California.

ENROLL NOW
In PARK VIEW LUTHERAN ELEMENTARY SCHOOL
14517 Crenshaw Blvd.
Grades through 4.
Miss Edela Quern, Teacher
ME. 4-3996 OS. 6-8804



TILT-UP SCHOOL... The Howard Wood School at 235th st. and Arlington is one of the many pre-cast concrete tilt-up schools being built by the Torrance Unified School District.

The walls are cast and then just tilted into place. The schools have attracted nation-wide attention.

Local School Buildings Gains National Attention

Torrance schools are nationally known for many unique features. Among the best known are the following:

1. The dining patio, which consists of an auditorium of about 2000 square feet and a pullman type kitchen which is built for around \$35,000 and is used as a multi-purpose unit for the elementary schools. This is Torrance's answer to the \$80,000 multi-purpose unit which was originally designed for the schools of Torrance.

2. Another unique feature of the district is the windowless cafeteria which appears in some areas of the district. One is now being built at Crenshaw school, and one already exists at the Fern Avenue school.

3. Another unique feature of the district is the fact that many of the buildings are built of pre-cast concrete, commonly known as the tilt-up method. The new North Torrance High School and 5 of the elementary schools are constructed with this method. The cost has been kept under \$11 per square foot in all cases.

"It is the objective of the Torrance Board of Education to build as many classrooms as

possible with the bond money and to stretch the money as far as possible for the children of the community," Mrs. Grace Wright, Board president, stated.

"It is also the objective of the Board of Education to build buildings that will have low maintenance costs.

"These two objectives do not interfere with the children having adequate space and buildings of sound construction, but they do eliminate some of the extras in the buildings that are not essential to the educational program."

Wang Joins Faculty At El Camino

Among the 12 newcomers joining the El Camino college faculty tomorrow, will be Martin Iver Wang, who will supervise audio-visual work at El Camino. Wang, a native Californian, taught at Torrance High School. He received his Master of Science degree at USC in the field of education.

10 DOZEN

FRESH ASSOORTED

COOKIES

\$1.00

ONLY

McCUES BAKERY

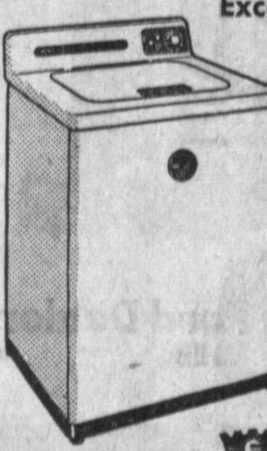
14809 CRENSHAW BLVD.

OPEN EVERY DAY 9:30 A.M. TO 6:30 P.M.

CLOSE TO NEW CALIF. BANK ON CRENSHAW BLVD.

FRIGIDAIRE AUTOMATIC WASHER

Exclusive Live-Water Action gets out the "deep-down" dirt!



Washes, rinses, spin-dries, cleans itself and shuts off, all automatically. All clothes are in hot, sudsy water all the time, not half-in, half-out, and your hands need never touch water! Lifetime Porcelain Finish on cabinet and top. New Float-Over Rinse. See a demonstration.

ONLY 299.95
LOW, EASY TERMS!

BAKER'S

TELEVISION & APPLIANCES

1344 El Prado Ave.
Ph. FA. 8-6606

Open Nites 'Til 9 P.M.

HEALTH MATTRESS & MATCHING BOX SPRINGS

E-Z CREDIT

REG. \$29.95
VALUE EACH

1845

Sets Only
• Posturized Innerspring Units
• Hundreds of Tempered Steel Coils
• Double Sisal Insulation
• Durable Covers and Handles

21 YEARS
EXPERIENCE
Satisfaction
Guaranteed

Choice of Full or Twin Size

KING SIZE and QUEEN SIZE BEDS

HOLLYWOOD BEDS • BED FRAMES

BUY DIRECT FROM US

AND SAVE UP TO 60%

EASY TERMS

Open Friday Nites Till 9:00

Nobody—But Nobody Undersells

Health-O-Pedic

MATTRESS CO.

1877 W. Carson Torrance

FAirfax 8-1712—Near 5 Points Inter.

CHURCH DIRECTORY

THE CHURCH OF GOD—2330 Cabrillo Avenue, Torrance. Pastor, Rev. M. E. Drake. Bible Study, Tuesday 7:30 P.M.; Y.P.E. Meeting, Friday 7:30 P.M.; Sunday School, 9:45 A.M.; Preaching, 11:00 A.M.; Evangelistic 7:30 P.M. Everybody invited.

NATIVITY CATHOLIC CHURCH—1447 E. 9th Avenue, Torrance, California. Rev. Patrick McGuinness, Pastor. Telephone FAirfax 8-2776. Schedules of Masses and Services: "Seven Sunday Masses—8:00, 7:00, 6:00, 5:00, 4:00, 3:00, 2:00 (High), 12:15. One Mass at 9:30 in St. Joseph's Church, 2314 West 203rd Street, (Pueblo) Torrance, Wednesday Evening Devotions at 7:30 P.M. Confessions Three Times on Saturdays—9:30 A.M. to 10:30 A.M. 4:00 P.M. to 6:00 P.M. 7:30 P.M. to 9:00 P.M. Baptisms Saturdays and Sundays at 2:00 P.M. Children's Instructions and Bible Study—Saturdays from 9:30 to 10:30 A.M. at 2371 W. Carson Native Catholic School. There are five groups beginning with first grade of Elementary School to the last year of High School.

THE FIRST METHODIST CHURCH—El Prado at Manuel Avenue. Rev. John L. Taylor, Minister. Church School for all ages, 9:00 Early Worship—Youth Choir, church school fourth grade and below, 10:00 Church School, all ages, extended sessions fourth grade and below, 11:00 Morning Worship—Adult Choir. Infant care from 9:00 to 12 A.M. 6:30 High School Youth Fellowship.

CHURCH OF CHRIST OF TORRANCE—1217 Cravens. Meets Sunday School, 9:45 A.M.; Morning Worship, 10:45 A.M.; Evening Worship, 7:30 P.M.; Prayer Meeting, Wednesday, 7:30 P.M. Elder, Fred, Minister.

KEYSTONE BAPTIST CHURCH—435 West 220th Street, Torrance. Rev. W. L. Lowe, home phone, Terminal 4-8874; study phone, FA. 8-6734. Torrance, Sunday School, 9:45 A.M.; Morning Worship, 11:00 A.M.; Training Union, 6:30 P.M.; Evening Worship, 7:30 P.M.; Mid-Week Service, Wednesday, 7:30 P.M. Cooperating with Southern Baptist convention.

FIRST LUTHERAN CHURCH—Located on Carson Street and Flower Avenue in Torrance. Rev. Paul Wenske, Pastor. Residence 2550 El Dorado. Phone FA. 8-6245. Church Office: 1725 Flower Avenue, FA. 8-6884. First Church Worship, 8:00 A.M.; Sunday School, 9:30 A.M.; second Morning Worship, 10:45 A.M.

FIRST CHURCH OF CHRIST, SCIENTIST—218th Street at Manuel Avenue. Sunday School, 9:30 A.M.; Sunday Service, 11:00 A.M.; Wednesday Evening Meeting, 8:00 P.M.; Reading Room, 1617 Cabrillo Avenue. Open 10:00 A.M. to 5:00 P.M. daily except Sundays and holidays. Monday and Friday evenings, 7 to 9 P.M.

CHURCH OF THE NAZARENE—1501 West Carson Street. Rev. Freeman Brunson, Pastor. Sunday School, 9:45 A.M.; Morning Worship, 11:00 A.M.; Youth Groups, 6:30 P.M.; Evening Service, 7:30 P.M.; People's Meeting, Wednesday, 7:30 P.M.

FIRST BAPTIST CHURCH—Carson at Manuel. Rev. C. Miles Northrup, Pastor. Mr. Douglas Jeffrey, Director of Music and Youth. Church phone: FA. 8-5030; Northrup, FA. 8-3403. Bible School, 9:30 A.M.; Morning Worship, 10:50 A.M.; Junior Church in annex, 10:50 A.M.; Training Union, 6:30 P.M.; Evangelistic Service, 7:30 P.M.; Mid-Week Service, Wednesday, 7:30 P.M. Nursery for every service.

ASSEMBLY OF GOD REVIVAL TABERNACLE—Normandie at 266th Street, Harbor City, Calif. Rev. and Mrs. Fred Martin. Services: Sunday School, 9:45 A.M.; Morning Worship, 11:00 A.M.; Evangelistic, 7:30 P.M.; Tuesday, 7:30 P.M.; Thursday, Young People, 7:30 P.M.

FOUR SQUARE CHURCH—1207 El Prado; telephone, FA. 8-5736. Rev. and Mrs. James P. Lowen, Pastors. Sunday: Sunday School, 9:30 A.M.; Morning Worship, 10:45 A.M.; Group Services, 6:30 A.M. (Y. P. Cadets, Defenders); Evangelistic, 7:30 P.M. mid-week; Wednesday, Bible Study at 7:30 P.M. Public invited.

LOMITA PRESBYTERIAN CHURCH—245th Street at Woodward Ave. (Near Lomita Boulevard and Normandie Avenue.) Rev. Eldon Durham, Minister. Residence 2307 Oak St. Telephone DA. 6-0139. Sunday School, 9:30 A.M. and Morning Worship, 9:30 and 11 A.M. Westminster Fellowship Youth Groups, 6:30 P.M.

FIRST CHRISTIAN CHURCH OF TORRANCE—2030 El Dorado Avenue. Rev. J. J. Walker, Pastor. Residence phone FR. 6-2088. Sunday School, 9:30 A.M. Morning Worship, 10:50 A.M. Nursery provided for Morning Service.

FIRST CHRISTIAN CHURCH OF GARDENA—16414 Dalton Ave. (Between Western and Normandie Aves.) Summer schedule: Bible school 9:15; Church, 10:15; Junior church, 10:15; Midweek services at 7:30 on Wednesday. Rev. Maurice Knott, Pastor.

TORRANCE MISSIONARY BAPTIST CHURCH—Located on Acacia and Sonoma in Seventh-Day Adventist Bldg. E. L. Thurmond, Pastor. Resident Phone Terminal 4-4967. 9:45 A.M. Sunday School; Morning Worship, 11:00 A.M.; 6:30 P.M. Bible Study; 7:30 P.M. Evangelistic Service Prayer Meeting Tuesday, 7:00 P.M.

EVANGEL TEMPLE-ASSEMBLY OF GOD—Located in the Grand Theatre, 1222 Cravens Ave. Torrance. Sunday School, 10 A.M.; Morning Worship, 11 A.M.; Evangelistic Service, 7:30 P.M.; Mid-Week Services, Tuesday and Thursday, 7:30 P.M. Rev. Clyde Stockdale and Rev. Gene May, Pastors.

KEYSTONE ASSEMBLY OF GOD—21916 Monica Ave., Keystone. Pastor Charlotte Shook, DA. 6-6861. Sunday School 9:45; Preaching 11 A.M. Evenings Evangelistic Service 8 P.M. Sundays, Mid-Week, Thursday 8 P.M.

THE CHRISTIAN CHURCH OF TRUTH (SPIRITUALIST), 16121 Orchard Avenue, Gardena, invites you to worship with them at 11 A.M. Sundays. Healing by Rev. Worcester; Sermon and Spiritual drawings by Pastor. Communion by Rev. Elvin.