

YUKON HEIGHTS: This attractive home in Yukon Heights is one of the second units built by James Norris, who is known for quality construction. Homes have numerous luxury features and contain both two and three bedrooms. —Press Photo

Sermon Topic

Pastor Duty's sermon topic will be "Burning and Shining" at the 11 o'clock Sunday worship hour at the First Baptist church, Park and Newton streets in Waverly. At the evening worship at 7:30, the con-

PING PONG TOURNEY

There will be a ping pong tournament at Scott Park today. The winners from the tournament will compete in the district tournament at Alondra Park, August 21.

The four classifications in the tournament will be boys and girls thirteen years of age and under, and boys and girls from fourteen to seventeen.

IT IS worse to apprehend than to suffer.—Brucere

OUR 31st YEAR SERVING THE TORRANCE AREA



OPEN SATURDAYS TILL NOON

- Asbestos Products
- Dunnage
- Hardware
- Hardwood Flooring
- Insulation Materials
- Millwork
- Paint
- Plaster
- Plywood
- Roofing Materials
- Sash & Doors
- Sewer Pipe
- Tile Board
- Wallboard
- Waterproofing

3 YARDS TO SERVE YOU

SAN PEDRO
403 W. 21st

Terminal 2-7206

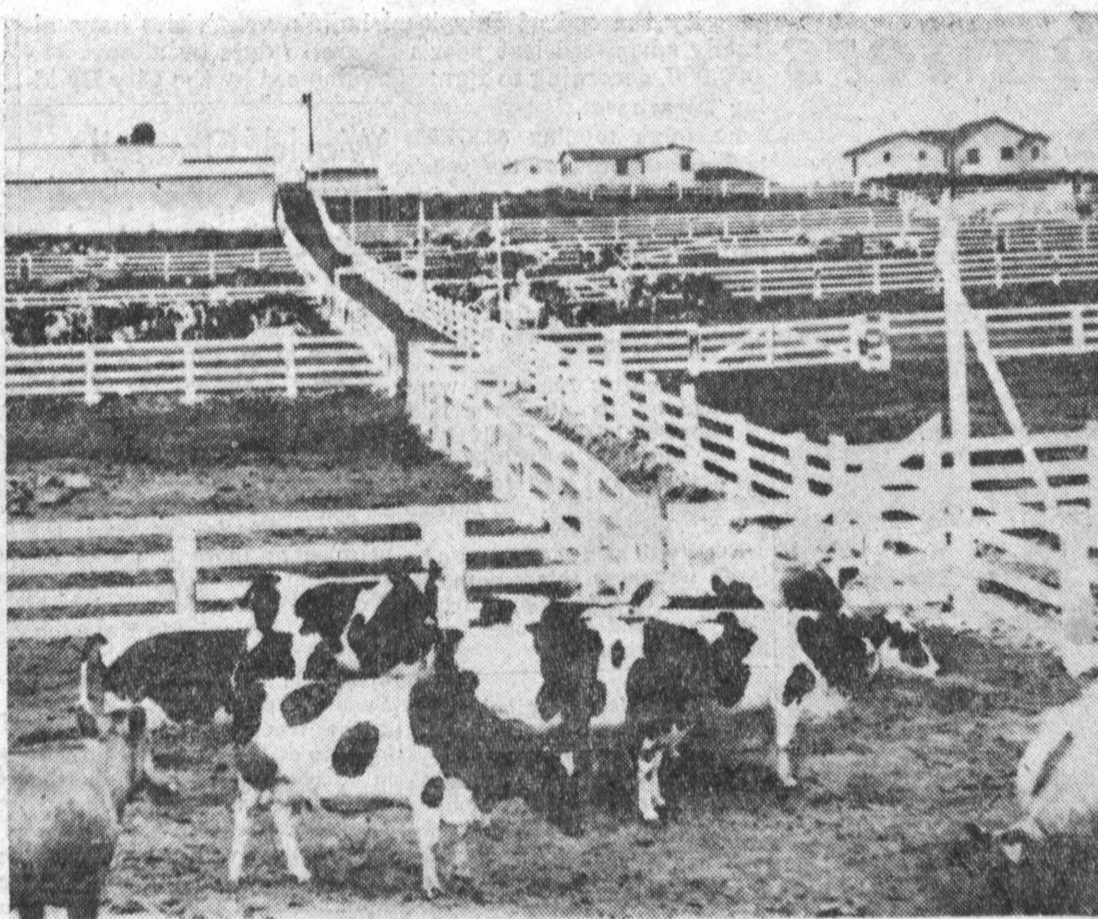
WILMINGTON
200 BAY VIEW

Terminal 4-1171
NEvada 6-2460

LONG BEACH
6980 CHERRY AVE.

Long Bch 2-1239
or MEtcal 3-1169

ROSSMAN MILL & LUMBER CO. LTD.



SUPPLY HARBOR AREA: Some 800 cows, including Jerseys, Guernseys and Holsteins are shown at Inglewood Farms where 3700 gallons of milk are bottled daily. Below is a Torrance lass, 11-year-old Clara Hoekstra, with coveted award won by this dairy as a high scorer in the roadside appearance program sponsored by the California Dairy Industry Assn. Little Clara, who was born in Holland, is the daughter of the manager of the Inglewood Farm herd.

—Photo Arts Photo

NEXT TO excellence is the appreciation of it.—Thackeray.

Bilotti In Hospital For Knee Surgery

One of the most active leaders in civic affairs in North Torrance, Anthony Bilotti, was rushed to the Tommance Memorial Hospital last Monday for an emergency operation on his knee. According to his physician, he is expected to remain in the hospital for three weeks. Bilotti's numerous friends and fellow workers are wishing him luck and a speedy recovery.

A MAN'S character is the reality of himself.—Beecher.

Slag To Wool Production Process At American Rock Wool Described

When the slag tailings left over from the manufacture of 20 Mule Team Borax are processed by the Torrance plant of the American Rock Wool Corp., mineral wool is produced. The slag tailings are the basic materials used for the production of mineral wool which is the basic step in home and plant insulation.

The bulk of production of the Torrance plant is sold in the Los Angeles area, although the local division is set up to service the West Coast.

Buyers Plant

The story of mineral wool in Torrance dates back some years to Coast Insulating Corp., whose plant was acquired in 1946 by American. Coast was producing granulated wool, white wool rolls, and white batts.

Then, one building took care of the processing, selling, and office staffs. Immediately after the purchase of the concern by American, a second plant was erected. During the following year, office buildings went up, and in 1948 the old plant was dismantled.

Today the sprawling facilities on Arlington Ave. across from Columbia Steel contain four batt lines, and various supplemental buildings to the main operation of combining min-

erals with chemicals to produce mineral wool. Space is also available, and utilized, for a large mineral stockpile.

Mixing Process

Preliminary mixing of the materials which go to make up mineral wool is done by a bulldozer, a tractor loader, and three standard dump trucks. Machinery is used because the basic minerals are received from the borax company in a state resembling wet earth, and are about as hard to handle.

From the mixing pile, the blended minerals move to a reverberatory furnace by overhead crane. The furnace is fed by hand, and under intense, reflected heat, bakes the wet minerals into the finished product.

Steam generated by the waste heat boilers through which exhaust gases pass is piped back for use in the manufacturing process. Natural gas, plus burning oils, is used as fuel.

Marineland To Open August 28

Workers at the Marineland of the Pacific with its two huge tanks are working toward an opening date of August 28, sources at the \$3,000,000 development on Long Point in Palos Verdes said this week.

Water is pouring into both the 600,000 gallon circular tank and the 500,000 gallon oval tank which will contain the marine specimens to be the central attraction of the development.

For a week prior to the filling operation, workers were busy preparing the bottoms of the tanks with scenic marine formations which will serve the double purpose of making the bottom of the tanks attractive smaller fish from their larger brothers.

Softball Score Of 17-16 Favors Alondra Park

The Scott Park Women's team lost a close one to Alondra Park last week with a score of 17-16. Leading hitter for the Scott team was Betty Carter. Women who played from the local park were Joyce Boatman, Jerrie Giberson, Merel Hiatt, Betty Carter, Thelma Lutten, Virginia DuPont, Shirley Crawford, Betty Allen, and Carmen Searles.

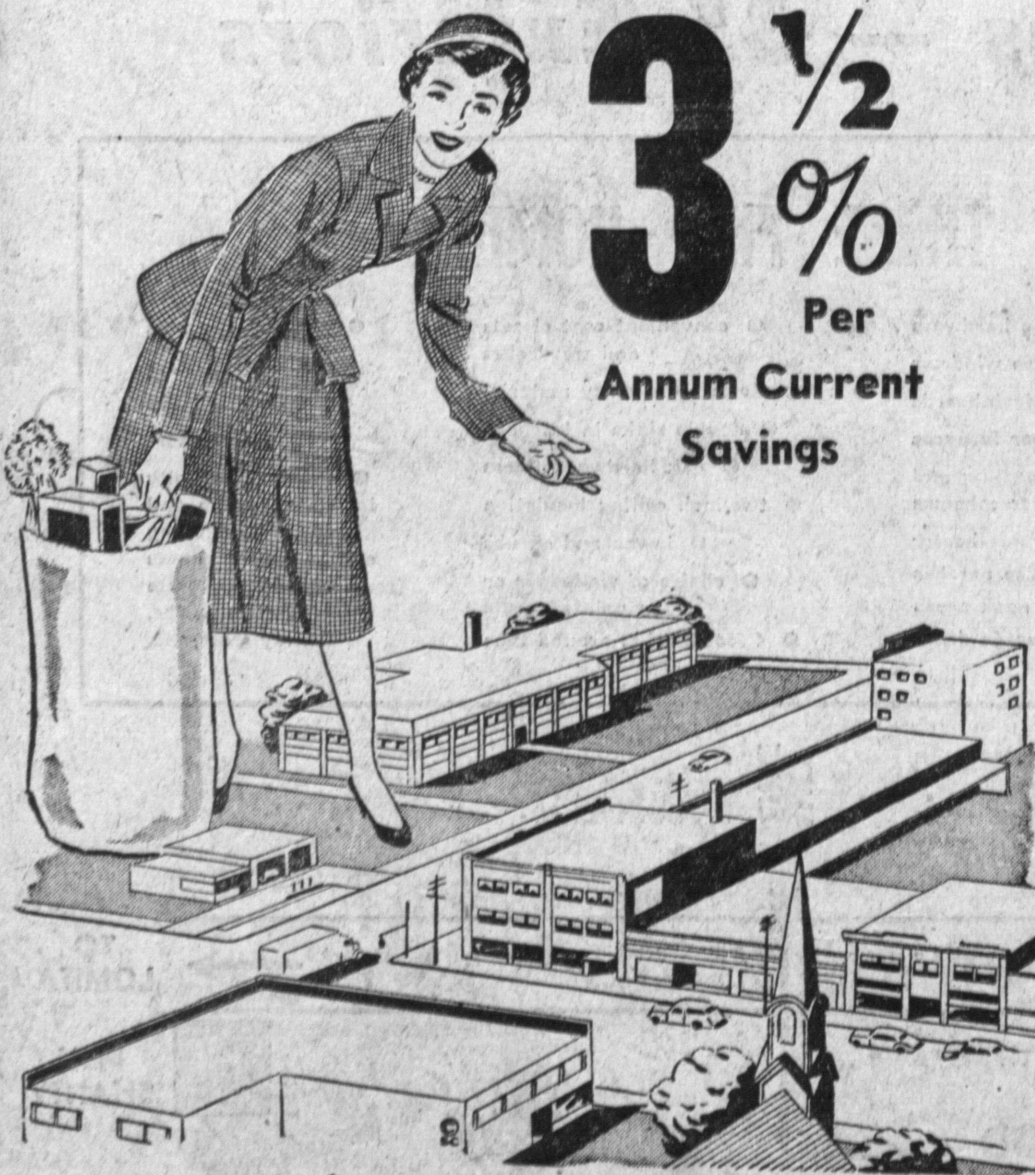
WE ARE PROUD OF OUR PART IN BUILDING TORRANCE AND THE HARBOR AREA

DAvenport 6-5011

LYNN BRICK COMPANY

25901 SO. NORMANDIE

HELPING OUR COMMUNITY GROW!



3 1/2 %
Per
Annum Current
Savings

WE HAVE AN IMPORTANT STAKE IN OUR COMMUNITY'S FUTURE.

THAT IS WHY WE DERIVE SO MUCH SATISFACTION IN HELPING YOU IN YOUR PLANS FOR SAVINGS, HOME OWNING, ETC. . . ALL IMPORTANT IN THE COMMUNITIES GROWTH. COME IN AND GET ACQUAINTED SOON.

SOUTHWEST SAVINGS & LOAN ASSN.
1439 MARCELINA, TORRANCE FAirfax 8-6111

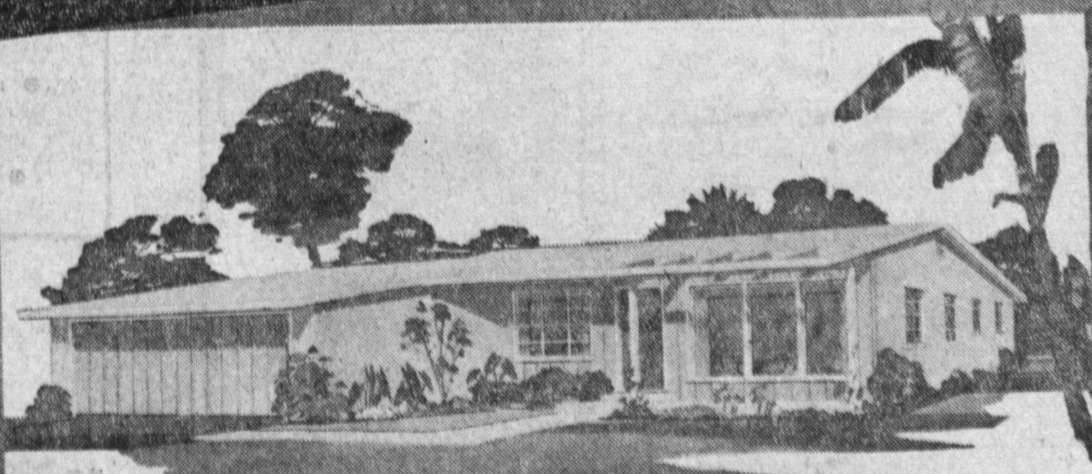
Contractors' Asphalt Sales Co.

ASPHALT PAVING MANUFACTURING AND CONTRACTORS

18101 HAWTHORNE BLVD.
BOX 73, REDONDO

REDONDO BEACH, CALIF.
FRontier 2-1106

COMPARE before you buy!



not just a tract house, but a FINE HOME!

TORRANCE Heights

Conveniently located on Sepulveda Blvd., just east of Hawthorne Blvd., near churches, shopping centers, schools & public transportation.

HIRSCH-VICTORY ENTERPRISE