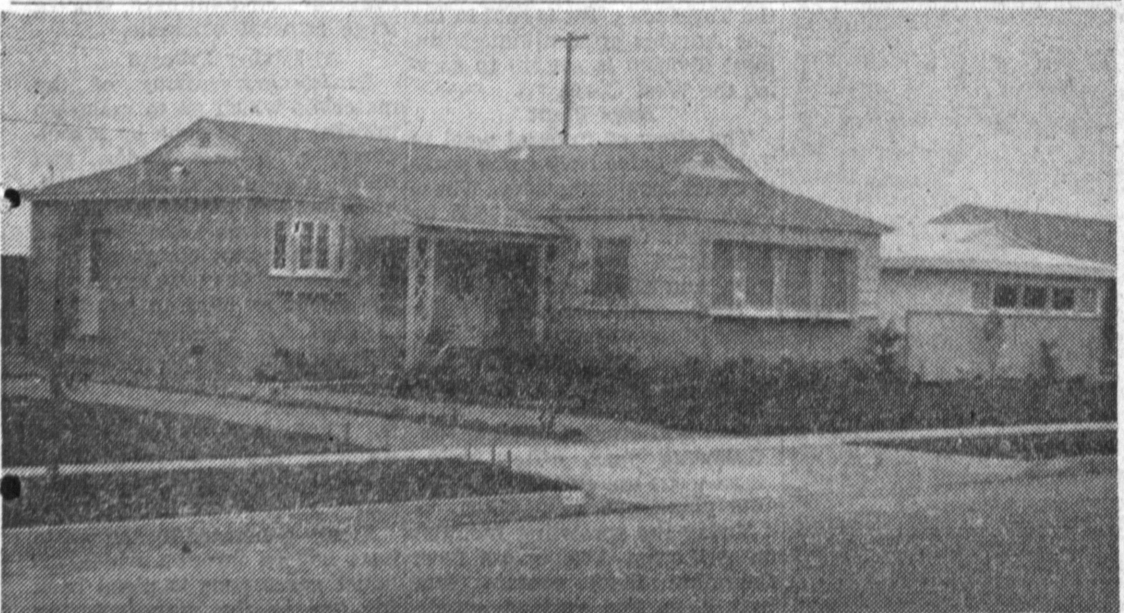
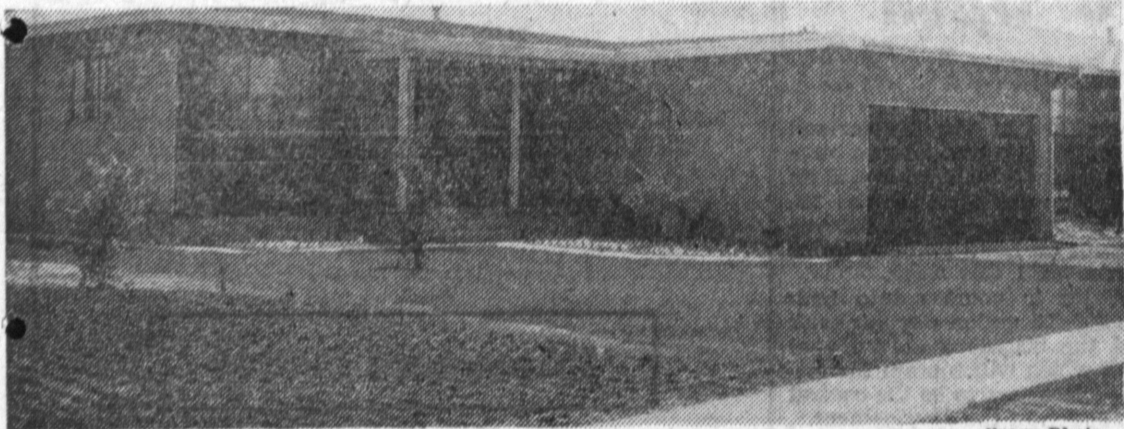


Building Boom Shatters Last Year's Record

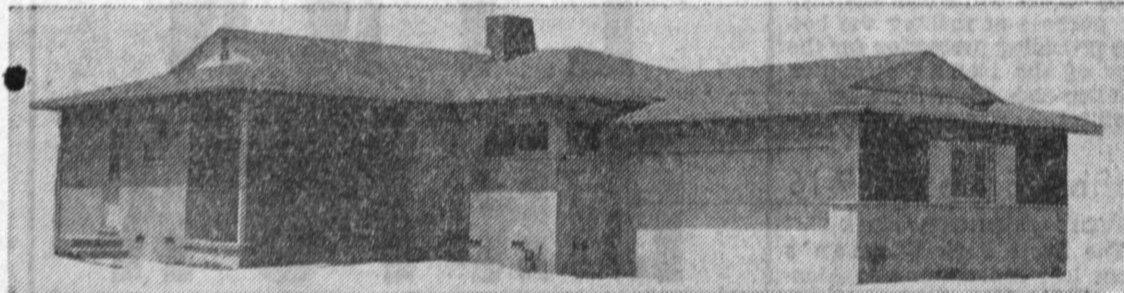
Torrance's building boom will reach unprecedented heights this year. Indications are that the building program will surpass even last year's record-setting total. The total building figure for 1953 reached \$29,315,265.



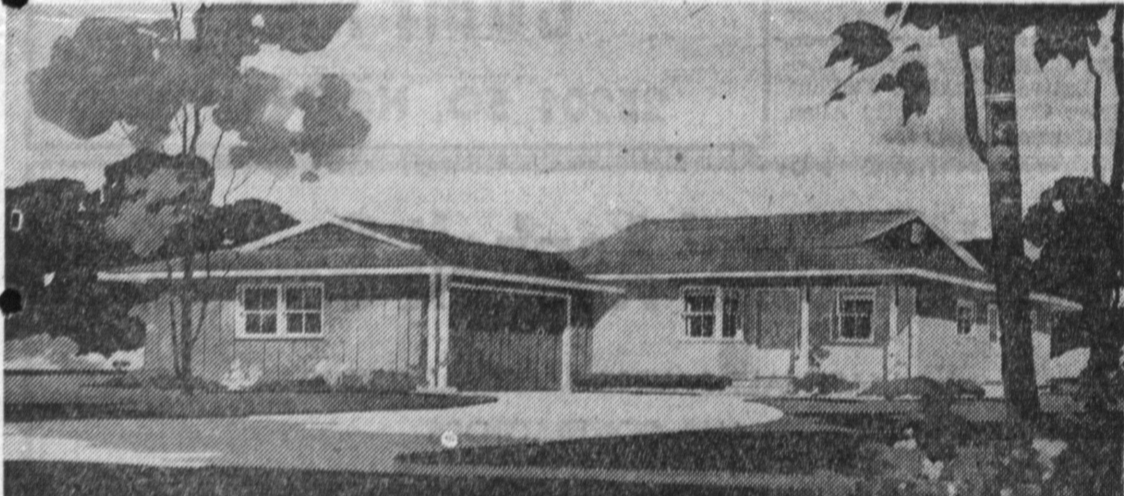
ELLINWOOD: Hundreds of new homes are being built and scheduled in the new Ellinwood tract, many being located in picturesque Palos Verdes hillsides near Pacific Coast highway and Hawthorne boulevard. Occupied homes in this area are shown. Ellinwood is one of the better, larger developments of Torrance.



TORRANCE HEIGHTS: Combining almost every desirable feature of a de luxe type, this is one of the huge developments in Torrance. Heights, offered by Hirsch-Victory Enterprises. Numerous ultra-modern conveniences are to be found here.



SELLING FAST: There are only a few homes remaining unsold in the Meadowbrook tract where this model residence is shown at sales office, 189th and Yukon.



CALIFORNIA RANCH Type House with wide roof overhang, typical of houses now available in West Covina at Kauffman's California Manor and at Southwest Park in Torrance, where some two thousand houses are projected.

By the end of July local building activities have already surpassed last year's figure to date by almost \$4,000,000, according to figures announced by the City Building Department.

Issuances totaling \$3,279,039 last month brought the year's figure to \$20,313,184, according to Walter Bradford, building department senior clerk.

July, 1953, had a total of \$1,687,840 and the first seven months of last year was \$16,404,598.

Last month's issuances were sparked by permits for a unit of the Bethlehem Steel Corp. plant, the new Crenshaw Elementary School and tracts by the Ellinwood Corp. and Hirsch-Victory Enterprises.

Bradford said he expects large issuances this month for a section of the Union Carbide Co. plant and the huge Kauffman subdivision.

The American Legion Team, winners of the Service Club League, will play the winners of the Blue Streak League in best two out of three games series for the Torrance City Championship. The first game is slated for Torrance Park, at 9:30 p.m. Friday August 20.

World Council To Be Observed At St. Andrew's

The Rev. Ralph B. Pease of Incarnation Mission in Norwalk will be the visiting rector this Sunday at St. Andrew's Episcopal Church during the absence of Rev. Bello who is vacationing during August.

Rev. Mr. Pease will speak on "Christ—The Hope of the World," at the 9:30 and 11 a.m. services. Special services are planned at those hours to observe the opening of the World Council of Churches at Northwestern University in Evanston, Illinois, and Rev. Pease's sermon title is the theme of the Evanston conclave.

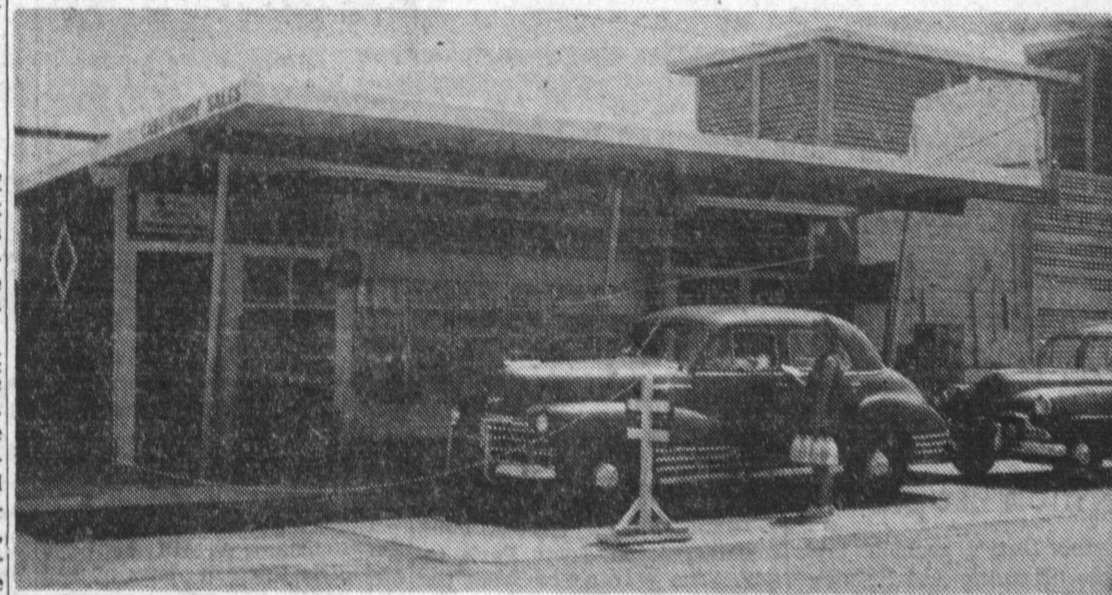
The World Council is a fellowship of 161 member churches in 43 countries throughout the world, including Iron Curtain countries.

Rev. Pease will also celebrate Holy Communion at the 9:30 and 11 o'clock services.

Thursday, August 12, 1954

TORRANCE PRESS

Page 27



FARM-FRESH dairy products may be picked up at the Inglewood Dairy Farm's modern drive-in located at 3400 Del Amo. Milk, eggs, cottage cheese, and numerous other dairy products can be purchased here without getting out of the car.

John L. Olson has been assigned as teacher in the Torrance Unified School District for the coming school year.

John Stewart Miller has been assigned as teacher in the Torrance Unified School District for the coming school year.

Ethel V. Wooddall has been assigned as teacher in the Torrance Unified School District for the coming school year.

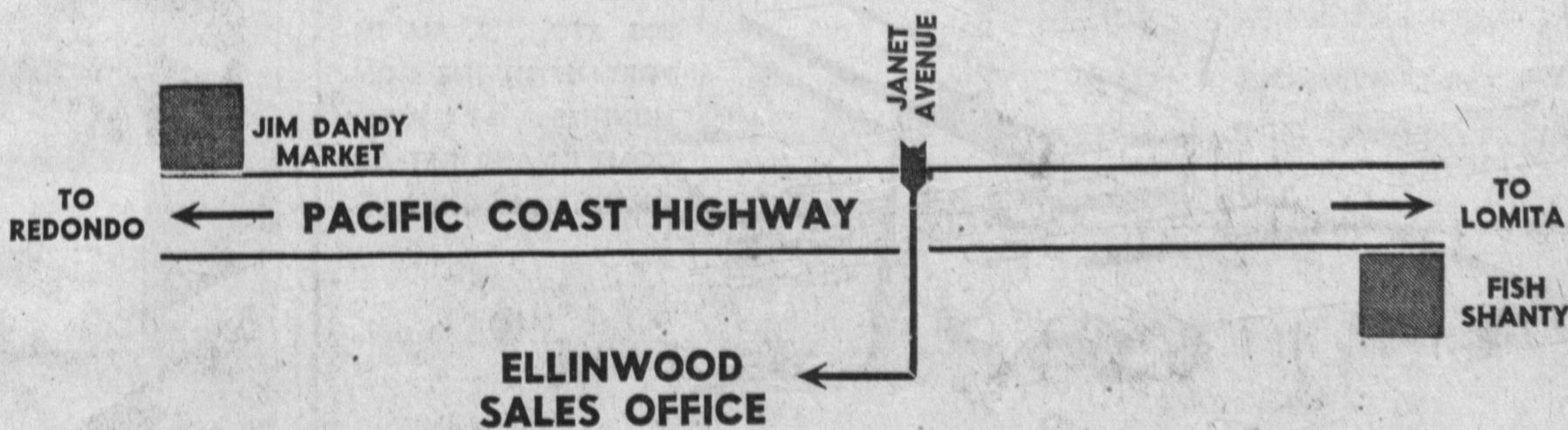
**LIVING IS GOOD
IN ELLINWOOD**
Bay Area's Finest Residential District
VETS NO DOWN
PAYMENT
EXCEPT COSTS and IMPOUNDS



3 BEDROOMS — 2 BATHS
5 Basic Plans — 35 Exteriors

FEATURES OF THESE FINE HOMES

- 3 bedrooms
- 2 baths
- covered 'outdoor' living terraces
- rear and front living rooms
- New 'Freedom' gas kitchens
- circulating floor plans
- roomy 2-car garages, attached or detached
- garbage disposers
- knotty pine kitchen cabinets
- with rustic hardware
- picture frame windows
- ceramic tile kitchen-drainboards
- 57,000 BTU dual floor furnaces
- individual styling and color schemes
- electric bathroom heater
- service porches
- breakfast nook areas
- finger-tip overhead garage doors
- convenient coat closets and wardrobes
- roof exteriors of luxury material
- double sinks in kitchens
- oak hardwood floors
- two-inch ceiling insulation
- lawns and shrubs
- choice of wallpaper or painted walls
- 4-foot Marlite around tubs
- shower over tubs
- sliding doors
- clothespoles
- incinerators
- finest community improvements in and paid for—including sewers, paved streets (some curved), concrete sidewalks, curbs, parkway trees, etc.



PHONE FRONTIER 5-6311

SALES OFFICE 4614 HIGHGROVE AVE.

**SEE AND COMPARE
THESE BEAUTIFUL
QUALITY HOMES
LOW AS \$9450**

**"YUKON
HEIGHTS"**
UNIT NO. 2



2 & 3 BEDROOMS

- Garbage Disposal
- Dual Floor Furnace
- Large Dining Area
- Mahogany Doors
- Cove Linoleum in Baths
- Coralite around Tub
- Inlaid Linoleum
- Hardwood Floors
- Built-in Mailbox
- 2 Car Garage
- Landscaping
- Trees in Parkway
- Curb, Gutter, Sidewalks
- Sewers in and Paid
- Aluminum Screens
- Weatherstripping around Exterior Doors

3 BEDROOM HOMES — 1½ BATHS
2 BEDROOM HOMES — AS LOW AS \$9450
M. D. SHEPHERD and MILAN Z. DRALE, Sales Agents

TRACT OFFICE, 172nd & YUKON, TORRANCE