

## James Lynch In 71st Army Band At Canal Zone

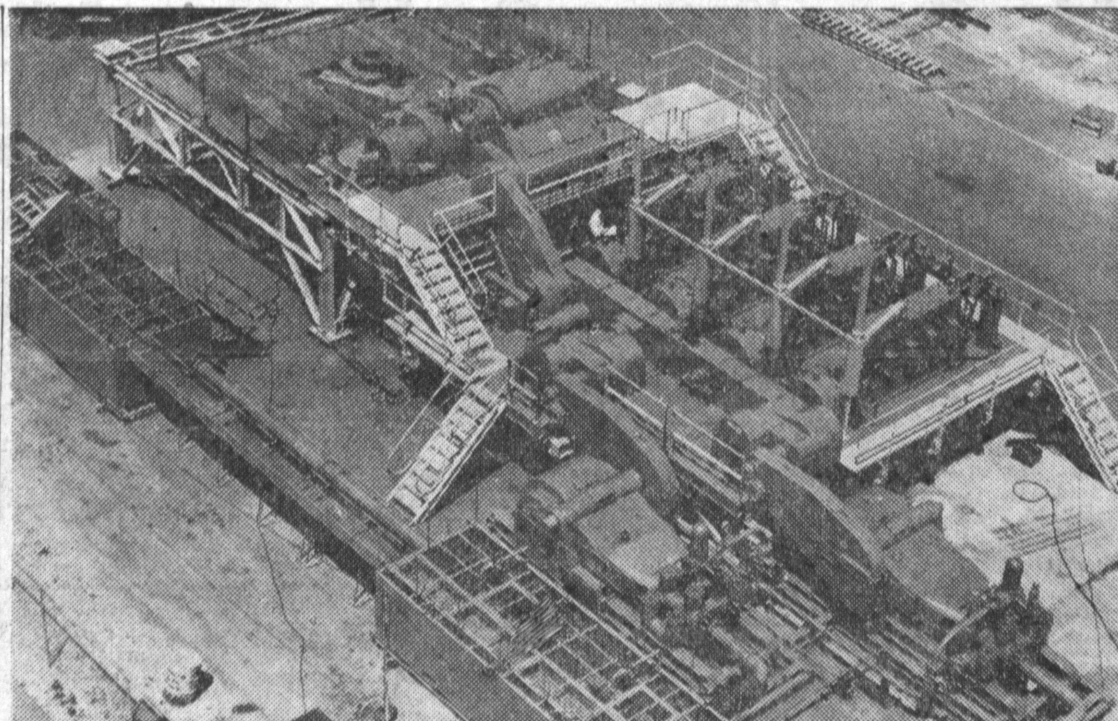
Pvt. James L. Lynch Jr., whose parents live at 1604 Juniper Ave., Torrance, is now serv-

ing at Fort Clayton, Panama Canal Zone, as a musician with the 71st Army Band. Lynch, who arrived in the Caribbean from Fort Ord, in June, entered the Army in December 1953. He is a 1949 graduate of Mount Carmel High School in Los Angeles and El Camino Junior college.

## RETAIL CLERK3 INTERNATIONAL ASSOC.

(LOCAL NO. 905)

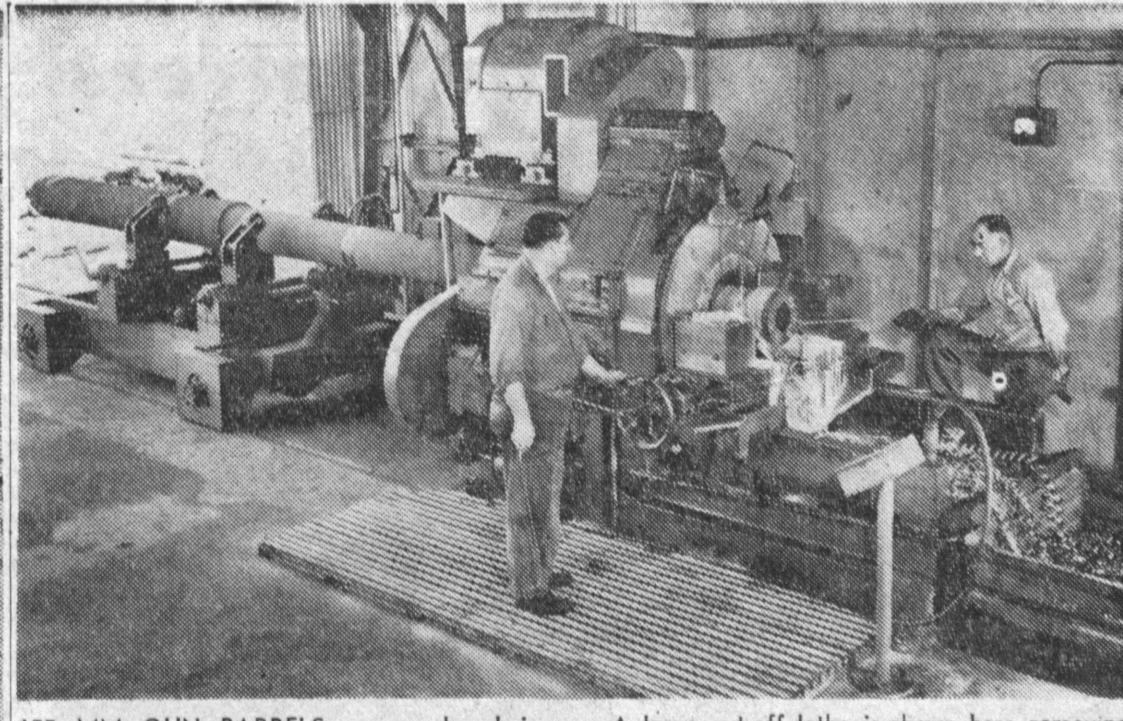
IS HAPPY TO TAKE ITS  
RIGHTFUL PART IN THE  
FURTHER DEVELOPMENT OF THE  
GREATER TORRANCE COMMUNITY!



NEARING COMPLETION is this 1300 horsepower drilling rig, with diesel engines and gyro fluid drives. This one was destined for Colombia, South America, where it is now in operation.

Similar drilling rigs are operating in Africa, Australia, Asia and other South American countries.

UNTIL I truly loved I was alone.—Mrs. Norton



155 MM GUN BARRELS are produced in quantity at National Supply's Torrance plant.

A large cut-off lathe is shown here removing etch discs from the muzzles of one of them.

## HERE'S MORE ABOUT EL CAMINO

(Continued from Page 25)

Units so far completed include a shops building, nine-classroom social science building, campus center-cafeteria building, two-story administration and 10-classroom building, life science building, additional shops and a library building. The El Camino College campus now embraces some 90 acres.

Center of the campus is dominated by a new building named "Campus Center."

This building being the center of student activities, contains a large dining room with a seating capacity of 850 and auxiliary dining rooms separated by modern fold doors.

student association offices, student cooperative bookstore, soda fountain, student lounge and two outside dining patios.

This building was built and furnished at a cost of \$500,000 and is of sufficient magnitude to provide eating and recreational facilities for the estimated 10,000 students who will ultimately attend the college.

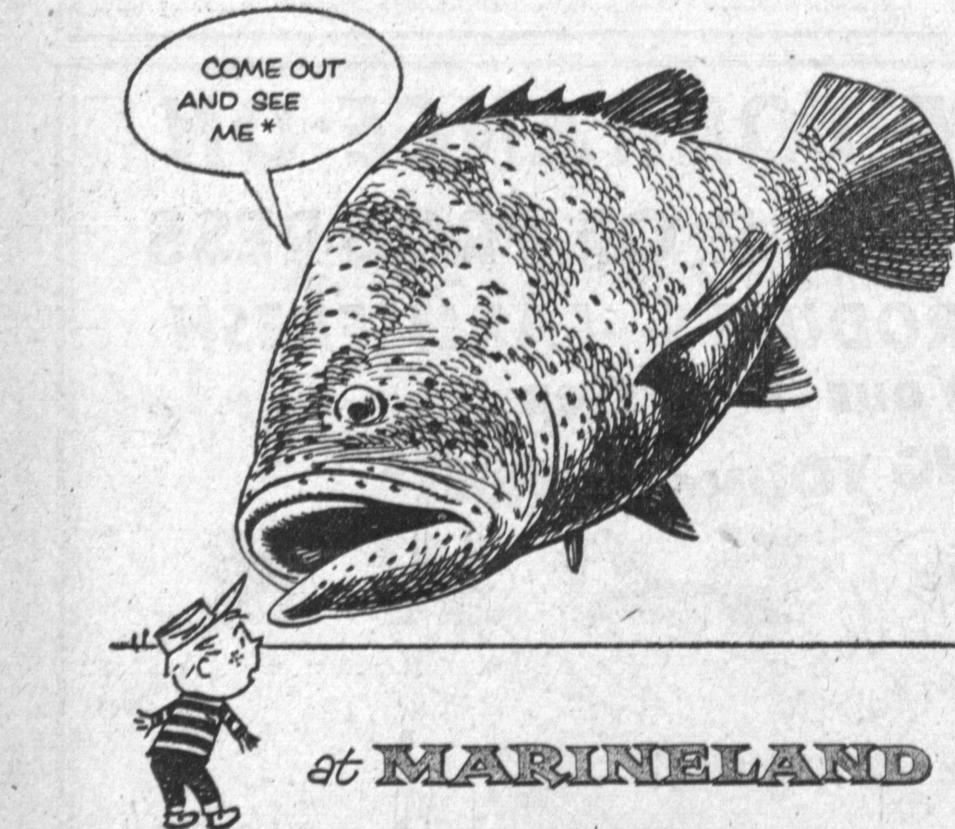
Master site plan of the campus and engineering of permanent buildings has been done by one of the state's leading architectural firms, Marsh, Smith, and Powell, of Los Angeles.

Design of buildings is contemporary modern with construction of reinforced steel with large areas faced with architectural brick. In keeping with California's climate, lavish use of glass predominates. Bi-

lateral lighting of classrooms has been emphasized with more extensive glass areas on north exposures. Porcelain treatment of facias has been utilized for permanency and beauty and to avoid expensive maintenance.

Main entrance foyer in the new administration-classroom unit features quarry tile flooring with ceramic tile wall design depicting the master site plan of the campus.

Laymen advisory committees comprised of both labor and management executives have been formed to advise the college administrative staff as to the educational needs of the communities served by the college. This democratic spirit of cooperation has resulted in both a friendly atmosphere and a solid support by the citizens of their college.



at MARINELAND

Opening August 28th...the world's largest Oceanarium\* on Palos Verdes Peninsula. See eye to eye with 5,000 captive sea creatures living in natural surroundings in gigantic tanks. Bring the family for a thrill they will never forget!

\*near Portuguese Bend

OWNED AND OPERATED BY OCEANARIUM, INC.



MILLIONS OF BRICKS: Comprise the mountains of these important building materials at Lynn Brick Co., one of the old established firms which has helped to build Torrance. Stan May, partner of Hal Bowen in the ownership of the yard, is shown with a driver at the yard.

MEDIOCRITY CAN talk, but it is for genius to observe.—Disraeli.

## Jim Bardin In Bavaria With 5th Infantry

Pvt. Jimmie L. Bardin, 20, whose wife, Elizabeth, lives at 4333 West 173rd street, Torrance, was a participant in the recently completed maneuvers held in southern Bavaria by the 5th Infantry Division's 11th Regiment.

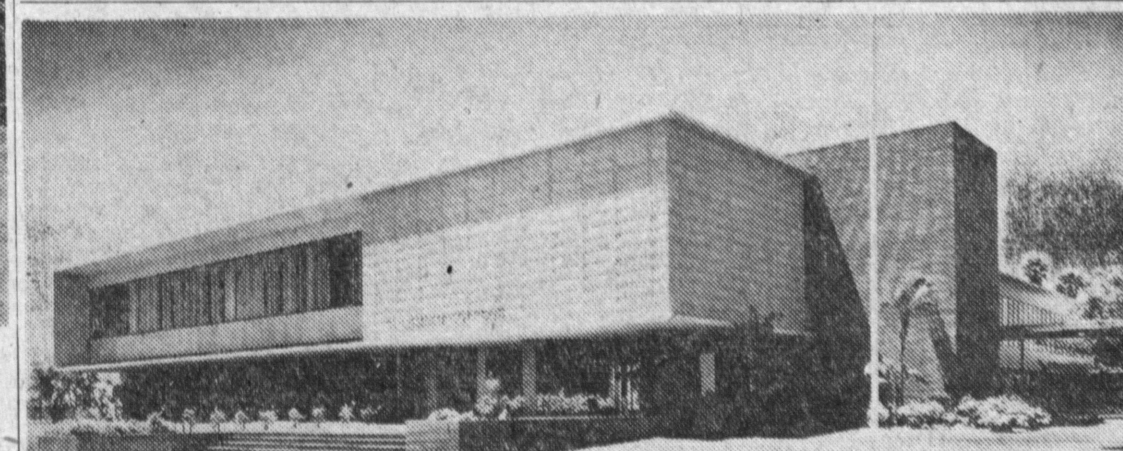
Taking place during some of the worst weather Germany has had in years, the maneuvers tested the combat-readiness of the unit under realistic fighting conditions.

He is the son of Mr. and Mrs. James Bardin, 110 South Sixth East street, Payson, Utah.

## George Cain In Japan With 1st Cavalry

Pvt. George F. Cain, 20, son of Mr. and Mrs. George F. Cain, 4560 Mindora Dr., Torrance, recently arrived in Japan for duty with the 1st Cavalry Division.

In the Far East since World II, the 1st Cavalry was rushed to Korea during the early months of the fighting and saw heavy action before returning to Japan late in 1951 for security duty.



ADMINISTRATION BUILDING: This is one of the ultra-modern buildings dotting the attractive El Camino campus. The 10-classroom building was constructed at a cost of about \$4,000,000 in 1952.

We salute Torrance on another outstanding year of progress. We are proud to have progressed with the city and hope we may continue to merit the fine response we have received from our good neighbors in this area.

YOUR BUICK DEALER

## BUTLER BUICK

New Location

2084 TORRANCE BLVD.

(Corner Cravens)



Collins-Dietrich Air Services, Inc.  
Managers of

# TORRANCE MUNICIPAL AIRPORT

A VALUABLE COMMUNITY ASSET  
10,000 FEET OF AIRPLANE PARKING SPACE!  
MILE LONG PAVED RUNWAY!

COMPLETE SERVICE for BOTH RESIDENT and VISITING PLANES  
ENGINE AND AIRCRAFT REPAIR  
GASOLINE - OIL - MOTEL - CAFE - AIR TAXI and CHARTER SERVICE

## AIR RIDE Over CITY \$3

FLIGHT AND GROUND INSTRUCTION  
DAvenport 6-3338

COME OUT -- -- 2801 PACIFIC COAST HIGHWAY

### ACME AIRCRAFT CO.

C. Roger Keeney — Hugh K. Crawford

CUSTOM CONVERSIONS — REPAIRS

RENTAL — CHARTER DAvenport 6-4081

### VEGAS AIR INC.

David Steward, president - Air Ambulance Service

Flight Instruction Charter — Airplane Rental

DAvenport 6-6523

### THE HALF-WAY HOUSE

LEO C. GRENDLER  
ARTHUR J. WHITE

MOTEL - CAFE - COCKTAIL LOUNGE

### COLLINS-DIETRICH AIR SERVICE

EDWARD DIETRICH, JR., Pres.

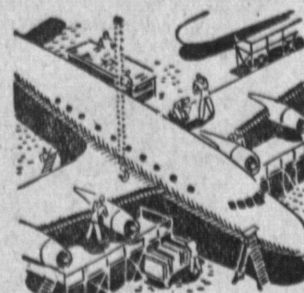
SCENIC FLIGHTS - CHARTER TRIPS  
STUDENT INSTRUCTION RENTAL

PHONE DAvenport 6-3338

### BELLANCA WEST COAST SALES

E. G. "SLIM" KIDWELL

NEW and USED PLANES — REPAIRS DAvenport 6-0060



## Serving Industry and A Huge Population Increase

Seldom have public utilities been called upon to make such rapid and expansive increases in service as have those serving the ever-growing community of Torrance. Fortunately, these challenges have been met with adequate facilities for the city's tremendous growth.

## TORRANCE MUNICIPAL WATER DISTRICT NO. 3

