



Horseshoe Matches Begin

During the last meeting of the North Torrance Voters, a new recreation program was instituted by the ways and means committee. The meeting was held at the home of chairman E. Williams, Jr., and resulted in the inauguration of a horseshoe tournament in the school yard of El Nido. The tournament will last several months, with a trophy to the champion.

tarian Ed Dietrich Jr., president and general manager of Collins and Dietrich, Inc. He is assisted in managing the booming airport by Robert W. Tod.

The airport, built in 1941 and 1942 by the government as a P-38 base, has a 5000-foot runway capable of handling B-29s or jets. During the war it was used as a jumping off spot for aircraft headed overseas.

City Takes Over
Following World War II, the War Assets Administration turned the field over to the City of Torrance with the understanding that it would be used only for that purpose. A recapture clause in the agreement which says that the government can take the field back if the city doesn't live up to the deal assures its use as an airport.

The field now has the huge nose hanger left over from the war years, 15 individual hangars, and seven larger hangars. Dietrich has built two large hangars on the field and is planning to continue his program of building one hangar each year. Five additional hangars are now in the planning stage or under construction. Several potential leases are under consideration, and expansion of the facilities at the airport are going on all the time, Dietrich says.



PACIFIC SMELTING COMPANY at 2219 South Western is one of the largest secondary zinc smelters in the United States.

COLUMBIA STEEL

(Continued from Page 19)

chant mill and an 8-inch merchant mill were added.

In 1923 the expanding Columbia Steel Corporation, which already had large steel operations at Pittsburgh, California, and in Utah, purchased the Llewellyn Iron Works plant. Two more open hearth furnaces and a 36-inch blooming mill were added.

Sheet Mill
Columbia purchased the equipment of the Pacific Steel Company in 1926 and moved it from South San Francisco to Torrance, and a sheet mill was placed in operation the following year. The sheet mill has since become technologically obsolete and was shut down early this year.

In 1930 all properties of the Columbia Steel Corporation, including the Torrance plant, were acquired by the United States Steel Corporation.

To meet demands of the approaching second World War, between 1937-40, the sheet mill facilities were revamped by adding a new 36-inch breakdown mill and two mechanized 2-high finishing mills. Shearing, annealing and galvanizing facilities were also improved.

During this same period, the 36-inch-22-inch rolling mill facilities were improved.

In recognition of its excellent production record during World War II, the Torrance Works received the Navy E award and the Maritime Service A award.

In 1948 commercial foundry operations were discontinued and tie plate was added to the product line through installation of a tie plate machine.

Leads Anti-Smog Battle
In 1951 the U. S. Steel Torrance mill became the first in

the nation to install electrostatic precipitators to each of its four open hearth furnaces to remove smoke and pollutants from this operation. Industrialists, scientists and government officials from throughout the world have been steady callers to Torrance since then to study this trail-blazing accomplishment in the battle against air pollution.

Most recent visitors to the plant were 11 scientists from seven western European countries who late last month studied the effective cleansing operation of the electrostatic precipitators which are run on a round-the-clock schedule.

Safety First
As in all United States Steel divisions, safety is stressed at the Torrance Works. The philosophy of "Safety First," the national slogan which was originated by U. S. Steel in 1905 at one of its Chicago plants, is promoted energetically at Torrance. Improved safety appliances on machines and intensive of injury-prevention to employees have made the Torrance mill a consistent winner of National Safety Council awards. Recent recognition includes the Award of Honor, the National Safety Council's highest award, which the Torrance plant received in 1946, 1947 and 1952. The 1952 Award of Honor was received for the plant's having achieved 3,513,436 lost-time injury-free man hours between August, 1951, and December, 1952.

Latest improvement at the 164-acre Torrance Works, which produces semi-finished steel, structural shapes, tie plates, hot rolled bars and hot rolled strip, was the installation of a new 88-ton charging machine. With a charging capacity of 7½ tons, the apparatus moves along a set of tracks in front of the open hearth furnaces and is used to load the furnaces with

Lincoln-Mercury To Make Car Award

One of the valuable prizes to be given away this coming Sunday night at the Community Fair will be a second car by South Shore Motors, Lincoln-Mercury dealers.

Softball Games

Game Results: Monday August 2, at Torrance Park. Marine Clerks 18, Harbor Hornets 1. Wednesday, at Torrance Park. Longren Aeros 10, Pre-Cast Concrete Products Co. 0.

AIRPORT MANAGER: Ed Dietrich is the manager of the Torrance Municipal Airport which houses a huge fleet of privately owned planes. The airport served as a war-time base for P-38's. Many consider it the potential air center for Southern California's increasing freight business.

TORRANCE AIRPORT STILL EXPANDING

The Torrance Municipal Airport is considered one of the finest airfields in Southern California.

The home base for about 130 planes, the airport has been seriously considered by many to be the potential air center for Southern California's increasing freight business. It has also been considered as a take-off

A TORRANCE INDUSTRY FOR 30 YEARS

Pacific Perforating Co.

OIL WELL SUPPLIES

1024 Engracia Ave., Torrance

GREEN HILLS Memorial Park

"The Cemetery Beautiful"

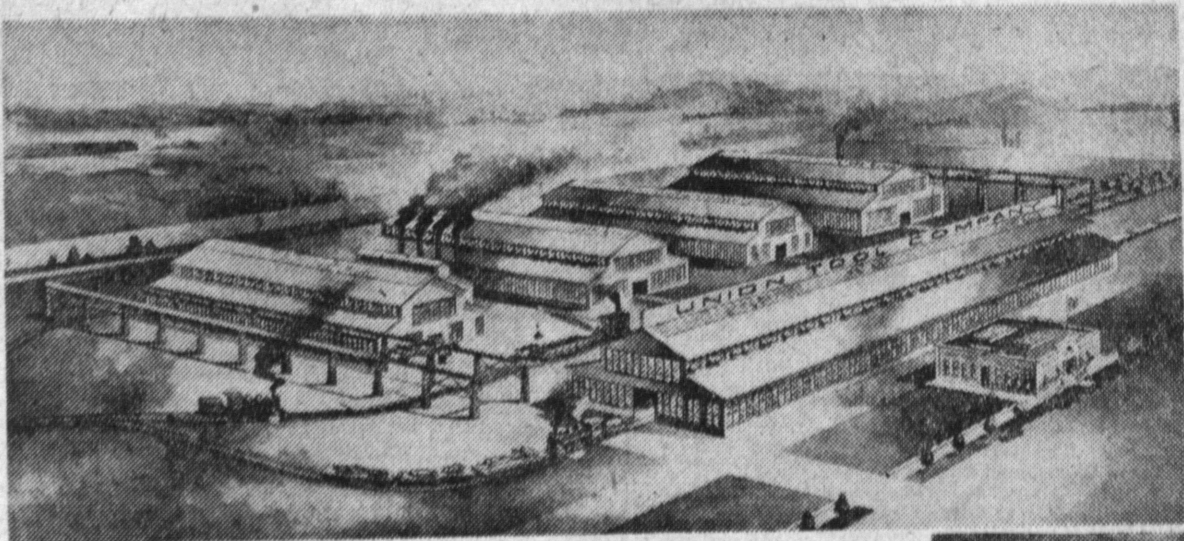
PALOS VERDES DRIVE NORTH
& WESTERN AVE., SAN PEDRO

TErminAl 3-4442

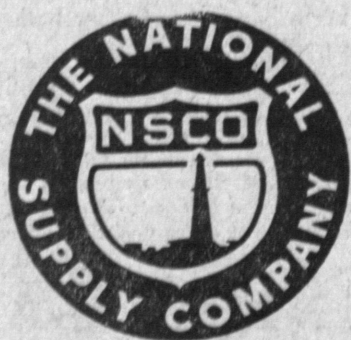
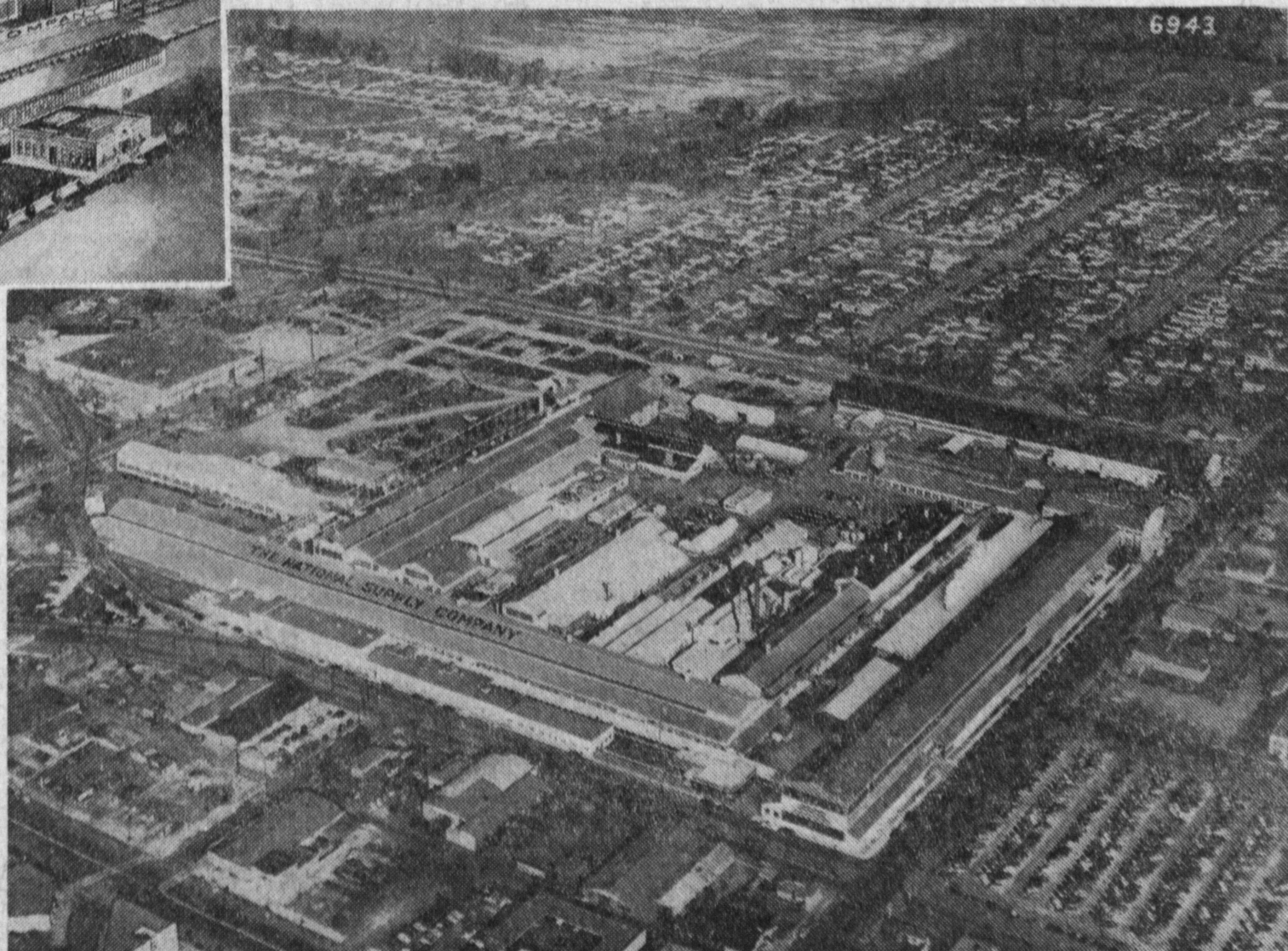
THE NATIONAL SUPPLY COMPANY

"SINCE 1912 — A GOOD PLACE TO WORK"

THEN



NOW



TORRANCE'S PIONEER INDUSTRY