

G & G BUILT HOME—One of Torrance most successful builders is Henry C. Griswold, one of whose fine homes is shown above. Newest tract under construction is Victoria Knolls in the Rolling Hills section located in Torrance off of Crenshaw boulevard south of 101 highway. Every home has a panoramic view of the rolling hills and metropolitan Los Angeles.

A Torrance Industry Since 1946

Manufacturer of Mineral Wool Insulations

American Rock Wool Corp.

TORRANCE, CALIF.

New Union Carbide-Carbon Plant To Produce Wonder Plastics Here



PLASTIC INDUSTRY GOING UP: Some of the buildings of the multi-million dollar Torrance plant of Carbide and Carbon Chemicals Co. are already com-

pleted. The industrial site is located on the east side of Hawthorne boulevard near 190th street. The plant is expected to be completed some time next year.

Completion Date Set By Chemical Co.

The new Torrance plant to be built by Carbide and Carbon Chemicals Co. will manufacture basic materials for the plastic industry. The new industry, comparable in size to the General Petroleum refinery, will be located at Hawthorne blvd. near 190th st.

Construction on the 140 acre site has already begun and it is expected that the plant will be completed some time next year.

The land was purchased from the General Petroleum Corp., according to Dr. J. G. Davidson, company president.

Approximately 350 people will be employed at the plant.

Basic materials for the plastic industry will be manufactured here from raw materials supplied by the General Petroleum refinery, Dr. Davidson said. The company produces the new plastic which is being featured in "squeeze bottles," Kordite

clothes lines, catsup bottles that look like tomatoes, and thousands of other post-war developments.

In addition to the wonder plastic, the new plant will produce ethylene glycol, the base for permanent anti-freeze, the best-known brand of which is Prestone Anti-Freeze.

The plant is being designed to produce from 50 to 60 million pounds of polyethylene and from 5 to 10 million gallons of ethylene glycol per year.

First in West

"Ours will be the first large petrochemical plant to be built in the west and this is an indication of our organization's faith in the future growth of the great area," Dr. Davidson said.

The company, which is a division of Union Carbide and Carbon Corp., operates similar petrochemical plants in West

Virginia, Texas and Indiana.

The new Torrance plant to be built by Carbide and Carbon Chemicals Co. will be the first plant on the Pacific Coast to

manufacture polyethylene and ethylene glycol. It is expected to supply the needs for these materials for the West Coast and the Mountain states.

Carbide's new plant will not contribute to the air pollution problems of the Los Angeles area since no acids will be used

whatever in the chemical operations involved, and no fumes will be given off, it was stated.

Natural gas will be used as a fuel for the boilers and as a consequence no more smoke will be produced that is generated by gas refrigerators

The miracle of growth

One of the things which has set Southern California apart from the rest of the country in recent years has been the tremendous, almost unbelievable growth that has marked this area.

Typical of this unprecedented westward expansion is the city of Torrance.

From a population of a few thousand people several decades ago, Torrance has emerged as one of the leading manufacturing centers in Southern California, with scores of new industries and more than 45,000 citizens residing within its boundaries.

As one of the early citizens of this community, we are proud to have shared in this growth... to have watched with understandable pride the influx of new faces and new industry to this community.

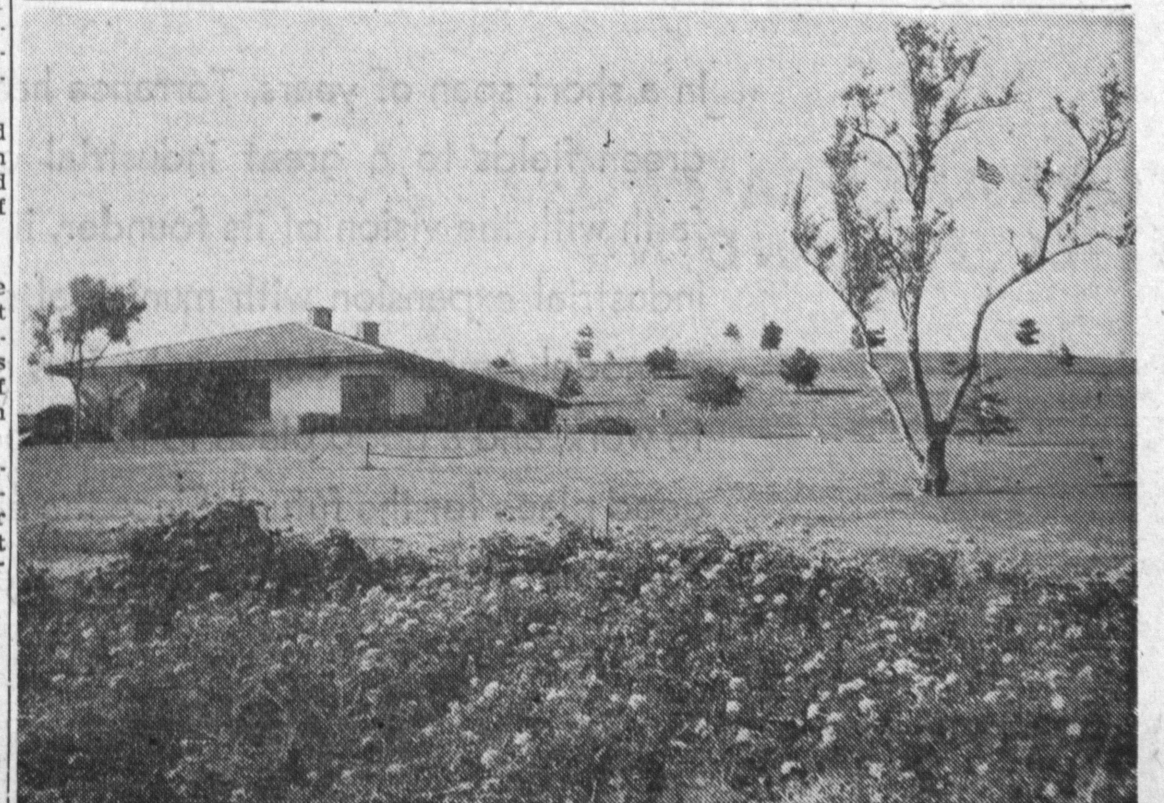
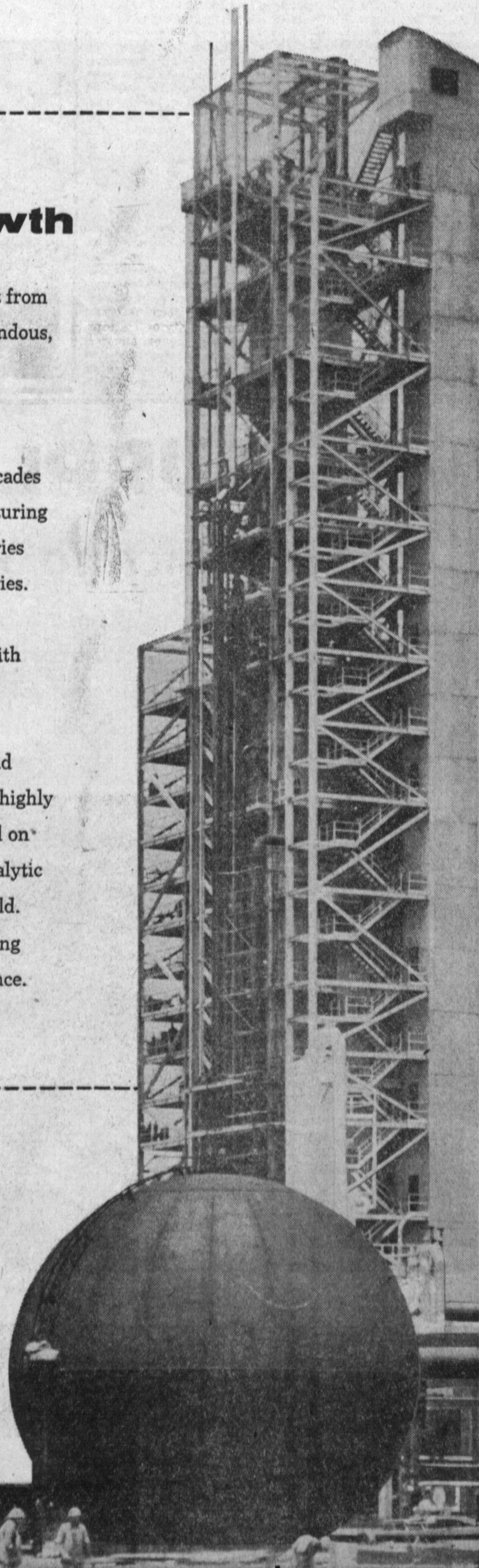
Our Torrance Mobilgas Refinery, too, has progressed and expanded over the years to meet the growing needs of this highly mechanized area. At this moment work is being completed on the newest of our refinery installations, the Themoform Catalytic Reformer—first such unit of its kind anywhere in the world.

Thus, General Petroleum continues to serve an expanding economy and contribute to the industrial growth of Torrance.



GENERAL PETROLEUM CORPORATION

A Flying Red Horse Company



BEAUTIFUL MEMORIAL: Non-sectarian, with arrangements for endowment care, is this

Green Hills Memorial Park cemetery in the Palos Verdes area of San Pedro.



SUPPLIES HARBOR: One of the old established sources of building materials for the Torrance area is Rossman Mill & Lumber in

Wilmington, which has three outlets and provides millions of feet of lumber for Bay building each year.



THIS IS THE ORIGINAL "Storybook Home," two story house developed by Milton Kauffman organization. It is considered by the industry

one of the greatest successes in low-cost housing during the years 1952 and 1953.

Dominguez Estate Company

Dominguez Water Corporation