

LUMBER CO. ESTABLISHED 17 YEARS

Celebrating his 17th Anniversary at the Torrance Lumber Co. this year is owner A. H. "Slim" Silligo, who purchased the popular Torrance lumber business in 1937.

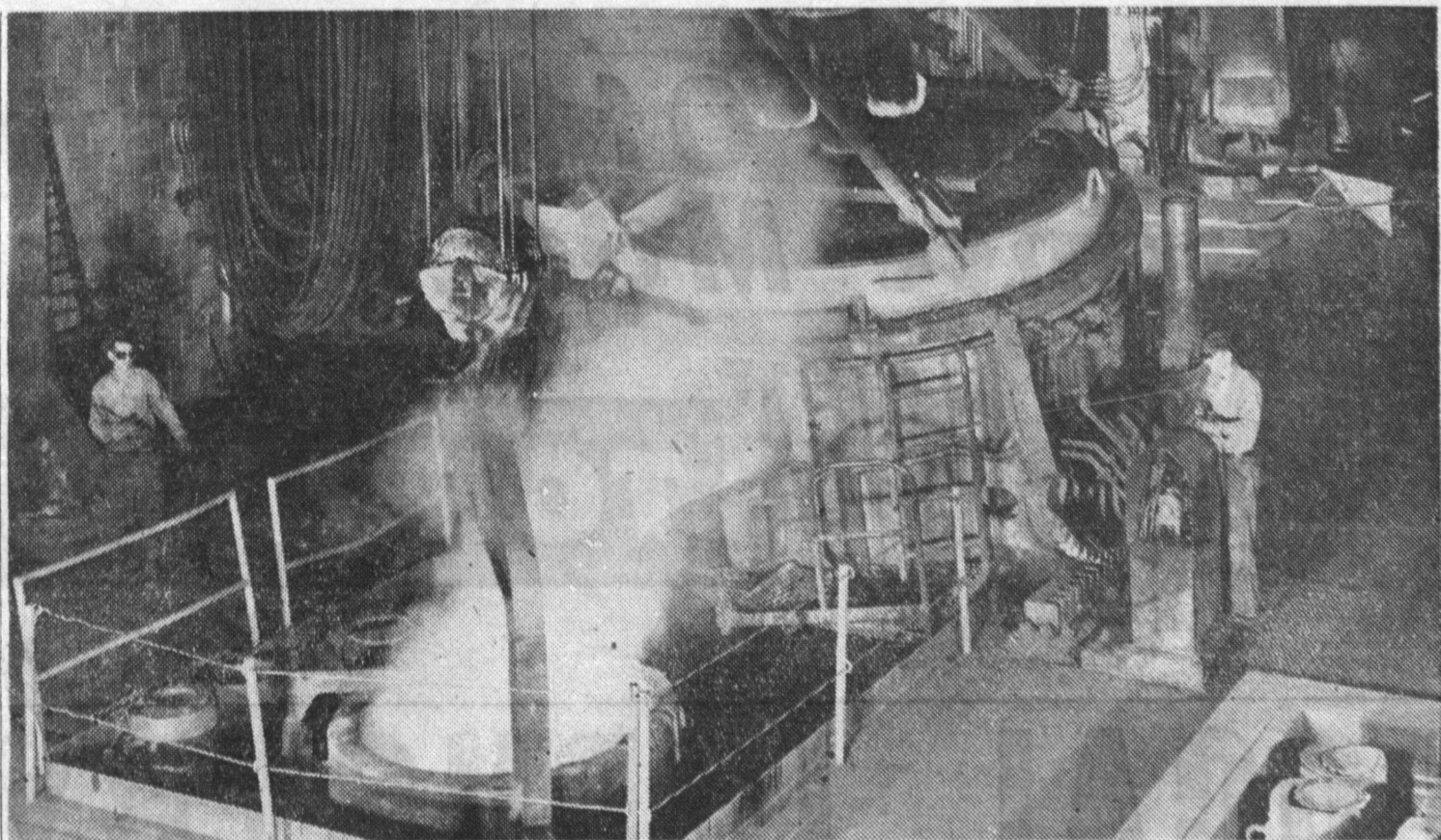
Prior to Silligo's ownership, the yard had been known as the Montgomery Lumber Co. and it was an old established Torrance building materials concern.

Silligo, prior to purchasing the modern Torrance business, was manager of a large lumber company in Wilmington.

Assisting in the operation of the business is Helen Silligo serves as the firm's secretary-treasurer.

PAPER DRIVE

A paper drive is scheduled at St. Margaret Mary school on Eshelman avenue on next Wednesday, August 18.



POURING a casting heat from one of the electric steel furnaces at National Supply. Steel castings are used extensively

is almost every major industry.



Charles Morgan Superintendent At Columbia

Charles C. Morgan this week rounds out his first half-year as general superintendent of the Torrance Works of the Columbia-Geneva Steel Division of United States Steel.

Morgan came to Torrance from Columbia-Geneva's Pittsburgh, California, Works where he was assistant general superintendent.

A graduate of the United States Naval Academy in 1933, Morgan served with the Navy until 1939 when he joined U. S. Steel.

Recalled to active duty with the Navy from 1941 to 1945, he served as captain of the U.S.S. Talbot and as commander of a division of destroyers. He saw action in the Aleutians, Solomons, New Georgia, New Guinea, Treasury-Bougainville,

Kellogg Receives Course In Korea

Pvt. Donald E. Kellogg, whose parents, Mr. and Mrs. E. E. Kellogg, reside at 1544 W. 206th street, Torrance, is now taking administrative schooling in Korea where he is stationed with the 27th Infantry Division.

Pvt. Kellogg shipped to Korea last June after basic training at Fort Ord. He was previously employed at the Douglas Torrance plant.

Bismarck-Archipelago, Saipan, Guam, Philippines and Okinawa campaigns for which he received the Silver Star and Legion of Merit.

He holds the rank of captain, U.S.N.R. (Ret.). He is a member of the American Iron and Steel Institute and Association of Iron and Steel Engineers.

CHARLES C. MORGAN
... General Superintendent
U. S. Steel Photo

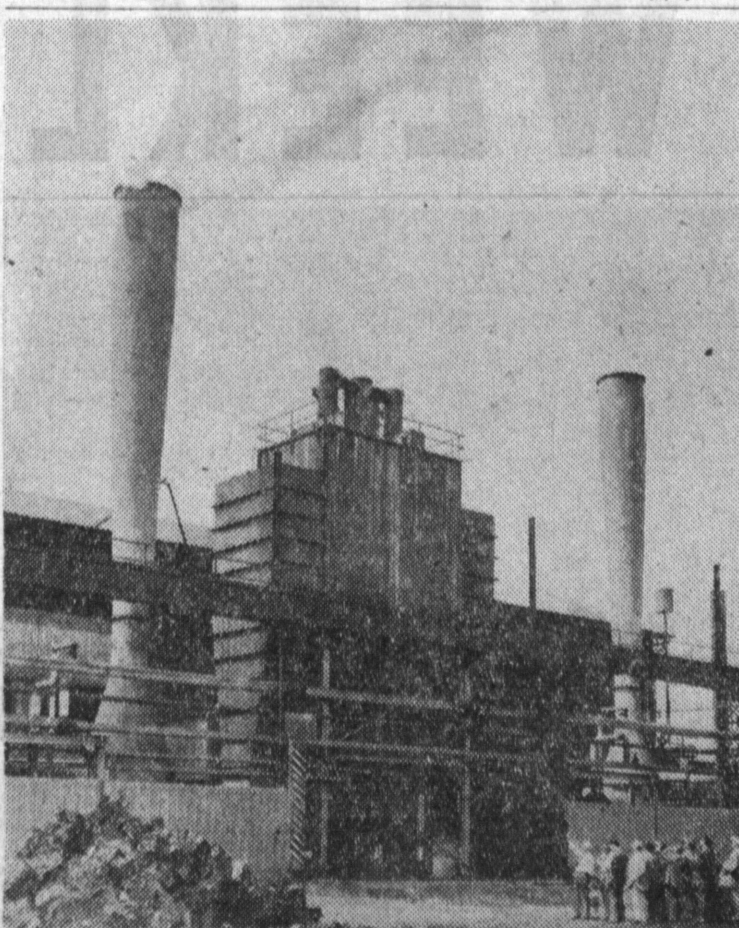
EXAMPLE IS always more efficacious than precept.—Samuel Johnson.

WE JOIN IN COMMEMORATING TORRANCE'S GREAT INDUSTRIAL PROGRESS

UNITED STEEL WORKERS OF AMERICA CIO

DISTRICT OFFICE 38

117 WEST 9th ST.
LOS ANGELES, CALIF.



MANY VISITORS from all over the world, including noted scientists, have witnessed demonstrations of the cleansing operation of the electrostatic precipitators on the open hearth furnaces of the Torrance works of Columbia-General Steel Division of U. S. Steel. Above a group of 11 scientists watch as the signal is given to temporarily shut off air pollution control on the open hearth stack at left, allowing yellow pall to belch forth. Installed in 1951, the precipitators at this plant were the first in the nation. They operate on a round-the-clock schedule.

National Supply Co. Dates Back 43 Years

Forty-three years ago, before the city of Torrance came into being, the site of the present National Supply company was selected by a group of progressive and far-sighted men for industrial expansion.

Foresight

There was much wisdom and foresight evident in those selections, because Torrance was only a barley field with here and there a mushroom patch. In fact, at that time the place didn't even have a name, and the Union Tool Company, as National was then known, enjoyed wider recognition than its geographical home.

However, National Supply forerunners built their homes here, laid out streets, sidewalks and sewers, formed the structure for city government, and Torrance became a municipality.

It is with considerable pride and satisfaction, that we can look back on the work of the Torrance pioneers and see how well they built. To them must go the credit for a solid foundation, and to them must be ascribed the vision necessary to a successful industrial community.

Largest In World

The National Supply Company as we know it today, is the outgrowth of those early developments. The Torrance plant, with its sisters in other cities, makes up an organization of the world's largest man-

ufacturer and distributor of oil field machinery and equipment. National has also contributed in a major way to the development of rotary drilling, which revolutionized drilling methods throughout the world.

The Torrance plant of the National Supply company is generally considered to be the largest completely integrated machinery manufacturing plant in the west.

In its 32 principal buildings, covering more than 700,000 square feet of floor space, are facilities that completely integrate the production of oil field equipment and industrial steel products. Included in these facilities are three electric arc melting furnaces for production of steel, a steel foundry, a large forge shop, machine shops, welding shops, pattern shop, chemical and physical laboratories, a power house, facilities for pipe storage and distribution, warehouses, shipping and office administrative facilities—a complete plant in every respect.

Products

The plant is geared to the manufacture of heavy machin-

Family Reunion In Minnesota

Jean and Kenneth Nelson and their three children, Barbara, David, and Jimmy, of 1216 Font-hill avenue, recently returned from a motor trip to Duluth, Minnesota. While in Duluth they enjoyed a family get-together with both of their families, Mr. and Mrs. Carl A. Nelson, and Mr. and Mrs. Oliver the reunion from other Minnesota cities were Jean's brother Ray O. Carpenter and his wife, and her sister, Mrs. Edward Nordheim.

Highlight of their return trip was a tour of Yellowstone National Park.

ery, and is becoming increasingly important to the production of maintenance and operating equipment supplied to basic western industries such as steel, aluminum, mining and cement. The plant manufactures ordnance material, aircraft parts, many other defense items, and produces forgings, castings, and machinery for many industrial uses.

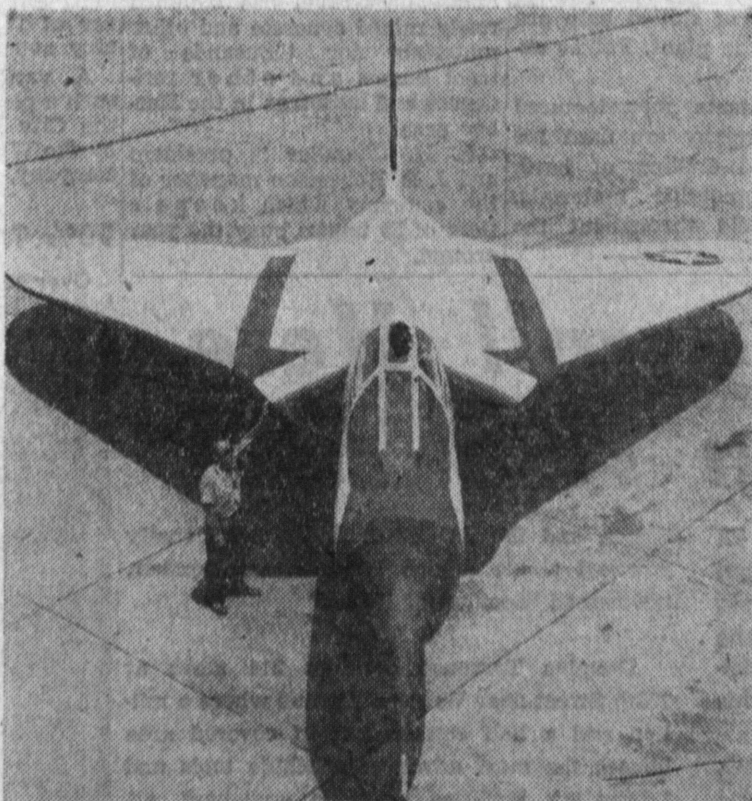
Products of the Torrance plant carry National's trade name, "Ideal," and there are few oil producing areas on the earth where the name "Ideal" is not well known and respected as a symbol of quality and dependability.

With good and sufficient reason then, we can say of National: "Since 1912, A Good Place to Work."

DOUGLAS TORRANCE

NOW BUILDING U.S. NAVY'S FINEST DEFENSE AIRPLANES

Fastest

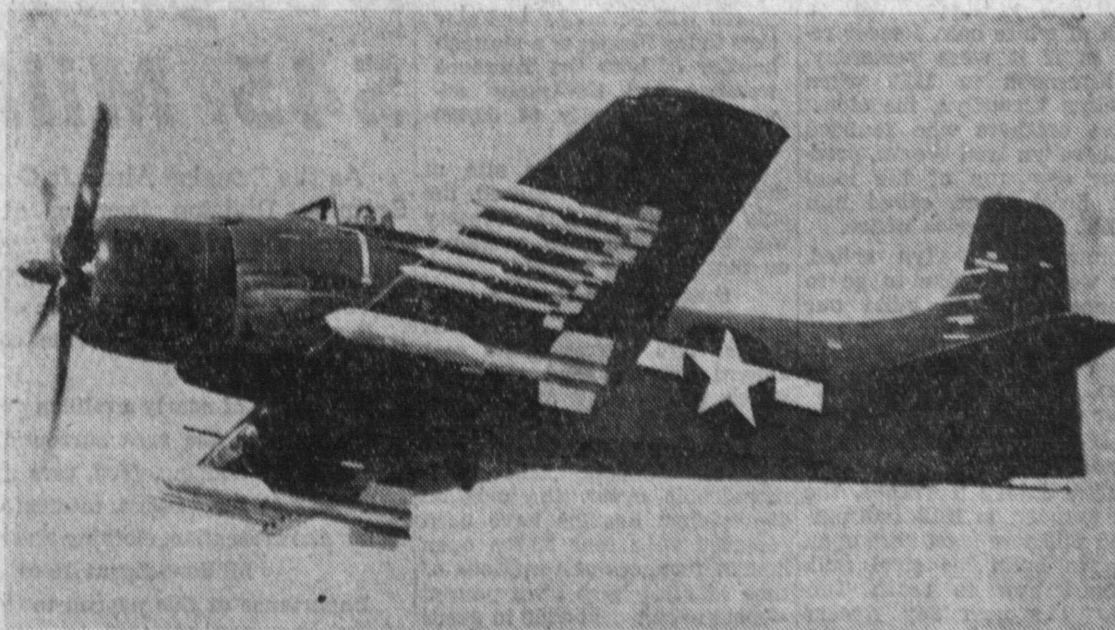


Holder of historic world speed records F4D Skyray jet interceptor flies supersonic in level flight for combat operations from decks of Navy carriers. Scheduled for delivery to Fleet in 1955, supersonic Skyray is assembled at Douglas Torrance.

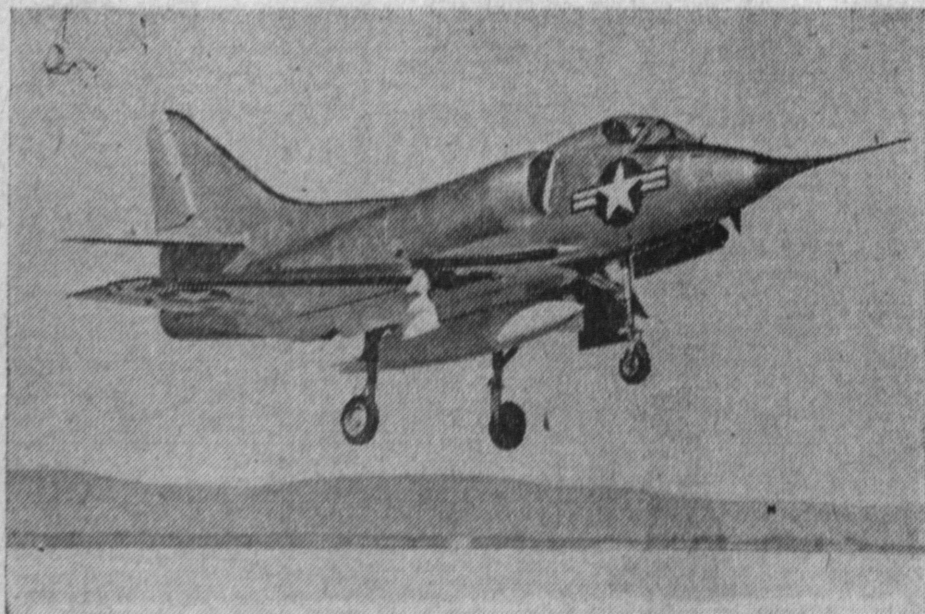
Douglas Torrance is now two years and four months old . . . or perhaps we should say, young . . . for we are still adding a small building here and there and the paint on our hundreds of new machine tools seems hardly worn. This has been a big job making this former aluminum plant into a modern, productive defense airplane operation . . . But now we are going strong and picking up momentum as the 9,000 people who work at Douglas Torrance gain more and more experience on the airplanes they are building for the navy. The swift changeover of the old property into a navy defense facility and the employing of thousands of skilled people for this vital defense program would not have been possible without the help and cooperation extended to us by officials, business and working people of the communities surrounding Douglas Torrance, and we thank you all sincerely.

New and Modern, Encompassing 1,500,000 Square Feet of Covered Area, Douglas Torrance is Equipped with All - New Machine Tools, Many the World's Most Advanced.

Most Adaptable



Navy's heaviest load carrying single engine attack bomber, the AD Skyraider is world's most adaptable airplane. Dozens of different adaptations of the versatile Skyraider have been produced in the past decade. It was the Navy's most powerful bomber in strikes against the Communists in Korea. Now in feeder-line production at Douglas Torrance.



Mighty Midget A-bomber designed for use on carriers of the Navy's modern Fleet is smallest and lightest jet combat plane in the United States. Now in production.

DOUGLAS AIRCRAFT CO., INC., EL SEGUNDO DIVISION
TORRANCE (B6) LOCATION