

## TORRANCE CHIROPRACTIC CENTER



**SPECIALIZED HEALTH SERVICE  
USING DRUGLESS METHODS**  
Particular attention to Rheumatism,  
Arthritis, Liver, Gallbladder, Ulcers,  
Indigestion, Colitis & Constipation.  
X-RAY, FLUOROSCOPIC &  
LABORATORY TESTS  
Members of California & National  
Chiropractic Association

R. A. LARSON, D.C. J. W. HEDDEN, D.C.  
1110 SARTORI AVE., TORRANCE PH. FA. 8-3738  
THREE DOORS NORTH OF TORRANCE BLVD.

## POLICE TO CRACK DOWN ON DUMPING VIOLATORS

The Torrance Police department announced this week that it will crack down on violators who have been dumping garbage along Torrance streets and highways.

The dumping situation has been called a "disgrace" by City Manager George Stevens.

Maximum fine for garbage violators is \$500 or six months in jail or both, Police Chief Willard H. Haslam said.

### Call Police

"There is no reason for our people to throw garbage on the sides of the streets," City Manager George Stevens said. "We

want to catch the ones who do. If anybody sees these violations, report the matter to the police at FA 8-3456. We have to get everybody to cooperate in such a drive. The best way to break this thing is to fine a few people and let the newspapers print their names."

The dumping situation has become so bad that Maple avenue had to be barricaded. It took 150 truck loads to clean up the street, Perkins stated.

Other bad spots are north Arlington and Crenshaw south of Carson.

"There is no reason why people should be throwing their garbage into the streets," Stevens maintained. "Nobody has a better collection service than Torrance. We collect all kinds of rubbish and garbage free of charge. There's no other city around us which does that."

### Dumping Hours

Anyone forgetting to have the garbage and rubbish ready on the pick-up days can take the refuse to the Torrance city dump located on Madrona north of Torrance boulevard.

It is open seven days a week as follows: Mondays through Fridays 7:30 a.m. to 5 p.m.; Saturdays and Sundays 7:30 a.m. to 4 p.m.

### New Club Formed For Australians

A newly formed club for all women of Australian birth, the Australia Club, had their first meeting recently at the Walteria Recreation Hall. Elected to office for a six-month trial period were Mesdames M. L. O'Malley, president; W. T. Larkey, secretary; L. Johnson, treasurer, and H. R. Simpson, vice-president. Mrs. Dorothy Ivicovich was elected publicity chairman and will serve on the executive committee.

The next meeting of the club will be Tuesday, June 1, at 7:30 p.m. in the Walteria Recreation Hall. Anyone interested may contact Mrs. Ivicovich at TE 2-0734.



ADDING INSULT TO INJURY... This scene on Madrona near Sepulveda is duplicated in many other spots along Torrance boulevards. Police are cracking down on violators. Residents are asked to report dumping violators by calling FA. 8-3456.

## Elect



**ROBERT H. FINCH**  
Your  
**CONGRESSMAN**

17th District

YOU NEED A  
CONGRESSMAN.  
IKE NEEDS A  
CONGRESSMAN!

June 8 Primary Election

**ROBERT H. FINCH** | X  
ATTORNEY AT LAW

Sponsored by Veterans for Finch Committee—J. McCann, Chairman  
318 E. Hillcrest Blvd., Inglewood, Calif.

Ed Siedel of the Postal Clerks Federation of Post Office Clerks Local 1043 will attend the 22nd to be held in Santa Barbara convention of the California May 28 to 30.

**SAVE!**  
UP TO **\$50.00**  
**FLOOR SAMPLE SALE**  
MATTRESSES & BOX SPRINGS

**Innerspring MATTRESS SETS**  
\$24.50 Innerspring Mattress SET 29<sup>90</sup>  
\$24.50 Matching Box Spring Both For  
\$29.50 Innerspring Mattress Both 34<sup>90</sup>  
\$29.50 Matching Box Spring For  
Foam Rubber  
\$34.50 Innerspring Mattress Both 39<sup>90</sup>  
\$34.50 Matching Box Spring Both For  
\$39.50 Innerspring Mattress Both 44<sup>90</sup>  
\$39.50 Matching Box Spring Both For  
\$49.50 Innerspring Mattress Both 49<sup>90</sup>  
\$49.50 Matching Box Spring Both For

Full or Twin Size  
MAY BE BOUGHT SEPARATELY

**FREE  
PILLOWS**  
With Purchase  
of \$44.90 or More

**BUY DIRECT FROM US  
AND SAVE \$\$\$**

• **EASY TERMS** •

Open Friday Nites Till 8:30

Nobody—But Nobody Undersells

**Health-O-Pedic  
MATTRESS CO.**

2 CONVENIENT SALESROOMS FAirfax 8-1712  
1877 W. CARSON, TORRANCE  
NEXT DOOR TO NICOLA'S APPLIANCE  
520 N. Pacific Coast Hwy., Redondo FRontier 4-8333

## T.V. SERVICE SPECIAL

INTRODUCING OUR NEW EXPANDED SERVICE DEPT.

Our Service Call Includes Checking All Operating Controls

A \$15.00 SERVICE  
FOR ONLY

**\$4<sup>95</sup>**

1. Horizontal Drive
2. Horizontal Linearity
3. Horizontal Hold
4. Width
5. Vertical Size
6. Vertical Hold
7. Vertical Linearity
8. Brightness
9. Contrast
10. Focus

AND -- Removing Chassis From Cabinet and  
Cleaning Picture Tube and Glass Window  
PLUS -- Thoroughly Cleaning Dirty Tuner  
Contact Points.

YES -- We Honor Your Parts Warranty.  
Ask About Our MetercPlan T.V. Insurance.  
48 Hour Service By Qualified Technicians.

**Nicola's TV Service Dept.**

FA. 8-7025 Open Evenings 1875 W. Carson

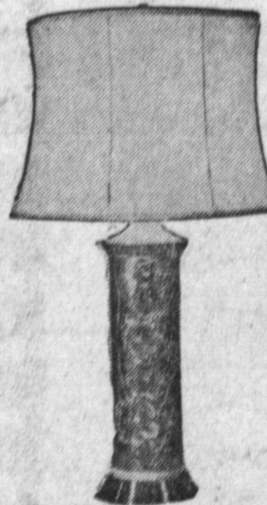
# MAPLE

For a friendly cozy home —  
See our outstanding buys in  
mellow-toned maple furniture!

**FRANK'S**  
Your Maple Headquarters



Picture this beautiful 2 piece upholstered living room group in your own home! What pride you will take in having a lifetime treasure designed exclusively by Bauman Bros. Priced so reasonably that it can easily fit into your household budget. Come in and let us show you how inexpensive fine furniture can be.



**LAMPS**

We are offering an outstanding value  
this week on our charming brass lamps.  
We are offering you  
a big saving at

**\$7.50**

Maple  
Milk Stools



Children love them... Grown-  
ups too. Add this quaint little  
stool to your living room  
scheme. In-  
expensive  
yet so prac-  
tical. . . .  
Special

**\$3.49**

Picture This

Beautiful wall clock encased in  
maple setting on your living room  
wall. Available with or without a  
wall planter, it is specially  
priced this  
weekend

**\$14.95**

**FRANK'S**  
Furniture Company  
1334 El Prado FA. 8-7687  
Complete Home Furnishings.

# CARPETING PRICE SALE

Ask For Items By Number

	WAS	NOW
(1) 10'8"x12' ALL WOOL FLORAL Soft Colors Beautifully Blended	168 <sup>00</sup>	89.50
(2) 10'x12' TRIPLE TWIST ROSE FRIEZE	145 <sup>00</sup>	84.25
(3) 12'x20' BROWN TEXTURED AXMINSTER COTTON	189 <sup>00</sup>	86.50
(4) 12'x17'6" GREEN TEXTURED AXMINSTER COTTON	161 <sup>00</sup>	79.00
(5) 10'6"x12' TRIPLE TWIST GREEN FRIEZE	153 <sup>00</sup>	87.25
(6) 12'x12'8" BEIGE COTTON BOUCLE (AS IS)	119 <sup>00</sup>	36.50
(7) 9'x20'8" BROWN 6-PLY COTTON BOUCLE	147 <sup>00</sup>	47.00
(8) 9'x16'9" BEIGE 6-PLY COTTON BOUCLE	173 <sup>00</sup>	36.50
(9) 9'x8'6" ALL WOOL LOOP PILE GREY	81 <sup>00</sup>	36.25
(10) 9'x15' ALEXANDER SMITH FRIEZE (rose)	119 <sup>50</sup>	62.90
(11) 9'x22'8" MAGEE'S EMBOSSED (brown and beige)	207 <sup>00</sup>	109.00
(12) 9'x27'4" ALEXANDER SMITH BARBIZON	270 <sup>00</sup>	127.00
(13) 9'x12' WOOL REVERSIBLE BEIGE	69 <sup>50</sup>	36.50
(14) 9'x12' MAGEE'S TONE-ON-TONE	108 <sup>00</sup>	52.25
(15) 12'x13' GULISTAN SCULPTURED BEIGE	187 <sup>00</sup>	94.50

THE ABOVE OFFERS ALSO IN-  
CLUDE THE BENEFIT OF CON-  
TRACTORS TERMS. 60 DAYS  
SAME AS CASH.

PLUS PLUS  
Open Mon. &  
Eves. Fri.

**SPECIAL!**  
Thursday • Friday • Saturday  
FREE BINDING ON THE  
ABOVE ITEMS!

**RECORD BROS. CARPET**  
16827 HAWTHORNE BLVD. 1 Block North of Redondo Beach Blvd. in Lawndale FR. 4-4395 FR. 2-8481