

### Annual Drama Awards Banquet Set May 27

The Torrance High School Thespian Troupe No. 1133 will hold their Fourth Annual Drama Awards Banquet at 6:30 p.m. May 27 in the Civic auditorium. Chairmen of the event are Nancy La Duke, president, and Lorraine Miller. The public is invited and tickets are available at Torrance High School.

Next week's softball at Torrance Park: Monday 7 p.m. Marine Clerks vs Harbor Hornets; 8:30 p.m., Dow Styron vs Waleria businessmen. Wednesday, 8:15 p.m., Longren Aeros vs Dairies Incorporated.

### Service Club Slo-Pitch

Tuesday night, at Torrance park, the Lions club opened the season with a 7-5 win over the Optimist in the first game and the junior chamber of commerce topped the Moose club, 10-4, in the second encounter. Wednesday night's games at Waleria resulted in a 9-8 win for the Rotary club over the Waleria Businessmen and the American Legion winning their contest 12-7 from the Hollywood Sportsmen's club.

"What Recreation Opportunities for Next Summer?" was the subject of a panel discussion at last week's meeting of 186th Street's P-T-A. Members

### Day Camp

Campers are signing up for the Torrance YMCA Day Camp that is scheduled to open June 28 at the YMCA building, 2080 Washington avenue.

Parents interested in this program for their sons may call the Torrance YMCA at Fairfax 8-1272 to learn further details.

Mr. and Mrs. Milnor H. Downs of Brightwaters, Long Island, New York, are visiting Mr. and Mrs. Rome Gately, 117 East 216th street, Torrance. Mr. Downs is a retired electrical contractor and the brother of Mrs. Gately.

## New Civic Association Organizes

A new civic organization, known as the Ellinwood Estates Homeowners association, was formed this month by residents of the recently-constructed Ellinwood Estates development in South Torrance.

Present at the organizational meeting, which was held at the Waleria School in Waleria, were approximately 75 homeowners from the area.

Membership in the EEHA is limited to property owners within the new development which is bounded by Palos Verdes Estates, Hollywood Riviera, Waleria and Pacific Coast highway. There are now 187 homes in this area.

At this meeting it was decided that officers for the first six months would be chosen from among 12 block captains previously chosen for their interest in civic activities.

Regular meetings of the Ellinwood Estates Homeowners association will be held on the first Monday of each odd-numbered month. The group is planning to incorporate under the State of California.

### Gately Heads Campaign For 'Pat' Brown

Frank Gately has been named Torrance chairman of the 17th congressional district campaign committee to re-elect California's Incumbent General Edmund G. "Pat" Brown.

"California's recent victory in the Tideland case, and its increased activity in the narcotics fight place 'Pat' Brown head and shoulders above all other candidates in the race," Gately said.

A graduate of New York University, Gately is a member of the Knights of Columbus and is active in youth activities.

## El Camino Election Tomorrow

Voters will elect one out of three candidates to the board of directors of El Camino college when they will go to the polls tomorrow, Friday, May 21.

### SEE LIST OF ELECTION PRECINCTS ON PAGE 1.

The post up for election is the one now occupied by Charles Ver Jones. Jones does not seek re-election.

Candidates whose names will appear on the ballot are: Jack N. Dabbs, Robert A. Owens, and J. Hugh Sherfey.

**Two Elections**  
The El Camino election will be held simultaneously with the Torrance school board election. Both elections will be handled through the same polls but voters will receive two separate ballots.

Jones has served on the El Camino board for six years. "I am not running for re-election, because the college is growing and needs more attention than I can give it now. My business is growing, likewise, and also requires more attention," Jones explained.

**Five Directors**  
The board of directors consists of five representatives from surrounding areas. Serving with the Torrance director are Al Wilson, Hawthorne; J. R. Black, Hermosa; M. R. Allen, Inglewood; H. C. Ashley, El Segundo.

Board members serve for a period of three years.

The board meets on the second and fourth Tuesday of each month. The board was established July 1, 1947 though a provisional board was appointed in 1946. Torrance became part of the El Camino junior college district in 1948.

The new board member will take office July 1 of this year.

**Torrance School Board**  
The Torrance board of education election will see three candidates in the running for the two posts. Candidates whose names will appear on the ballot are: Dr. Joseph P. Bay (Incumbent), Mrs. Opal Benard, Charlton Mewborn, and Edward Schwartz.

The contest is open to any Southland girl between 10 and 13 years of age. Contestants are asked to send their name, address, telephone number, age, school, grade, and snapshot to Oceanarium, Inc., Portuguese Bend, California.



**JACK DABBS**  
ADDRESS: 1640 Juniper.

PLACE OF BIRTH: St. Louis, Mo.

LENGTH OF RESIDENCE: 16 years.

EDUCATION: high school. FAMILY: wife, three school-aged children.

OCCUPATION: general manager of M & M theaters (2 in Torrance, 2 in Gardena). Veteran.

**CLUBS, ORGANIZATIONS:** Rotary (president); Community Chest (city ch'man, three years); Harbor area vice ch'man; Harbor area welfare council.

**STATEMENT:** "I am interested in the post from a community service standpoint. I'm very interested in kids especially around the high school and college age. I deal with them all the time since I employ 40 high school and junior college kids."



**J. HUGH SHERFEY JR.**  
ADDRESS: 1221 Engracia

PLACE OF BIRTH: Colfax, Washington.

LENGTH OF RESIDENCE: 18 years.

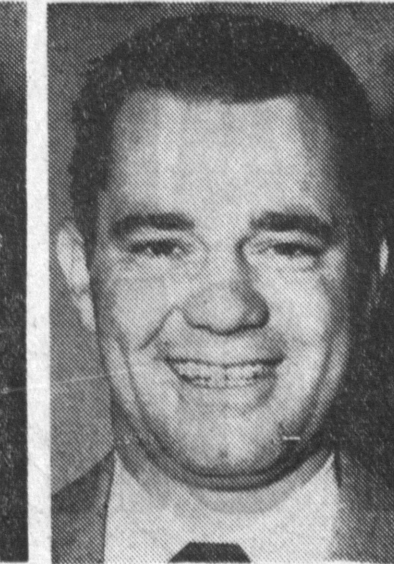
EDUCATION: southern branch of the University of Idaho.

FAMILY: two sons, 13 and 15 years old.

OCCUPATION: managing partner of Stone and Meyers mortuary.

**CLUBS, ORGANIZATIONS, OFFICES:** Rotary, past president; Masons, lodge 447; Shriner; former mayor of Torrance '46-'50; present member of the planning commission; Red Cross fund campaign chairman '53-'54; Torrance mounted police.

**STATEMENT:** "I am vitally interested in the administration and educational policy of our schools. I had the privilege of appointing the first board of education in Torrance."



**ROBERT A. OWENS**  
ADDRESS: 1728 Martina.

PLACE OF BIRTH: Rodeo, California.

LENGTH OF RESIDENCE: 20 years.

EDUCATION: Narbonne high school; B.A. from Woodbury college.

FAMILY: wife, two children (pre-school).

OCCUPATION: associated with Bob L. Haggard in real estate.

**FORMER OCCUPATIONS:** ass't superintendent at Douglas; owned 50% of advertising agency at one time; newspaper promotional work; 3 1/2 years navy.

**CLUBS, ORGANIZATIONS:** Gamma Sigma Pi (honorary business fraternity); past vice pres. of Torrance Jaycees; past pres. of Mid-Day Toastmasters; pres., Civitan.

**STATEMENT:** "I believe that education is the backbone of the nation. I feel that I am quite cognizant of the tremendous growth of this area and the many problems it presents to civic and school bodies."

**YARDAGE**  
REMNANTS MILL ENDS

**FACTORY TO YOU!**

**DRESS, DRAPERY AND UPHOLSTERY FABRICS**

**SQUAW CLOTH... PRINTS & SOLIDS** 2 yds. \$1.00  
"JUST WASH & HANG"—NO IRONING NEEDED!

**AWNING CANVAS... STRIPES & SOLIDS** 59¢ yd.  
IN VIBRANT RAINBOW COLORS... HEAVY WEIGHT!

**NYLONS... MOST ARE 45" WIDE!** 98¢ yd.  
SCULPTURED PRINTS, EMBOSSED FLOCKED SHEERS, FLORALS, PRINTED PUCKERS, CORD SUITINGS, ORGANDIES & NINONS, SELECTED PATTERNS FROM FAMOUS MILLS!

**"FIRESTONE" FOAM RUBBER** (Seconds) 1.25 lb.  
THE MIRACLE CUSHIONING MATERIAL FOR 1000 USES! SEWS, ROLLS, TUFFS, QUILTS, & GATHERS TO SHAPE. RESISTS MILDEW, SALT WATER, AND IS WASHABLE. USE IT FOR: PILLOWS, CHAIR SEATS, BOLSTERS & UPHOLSTERY.

SALE BEGINS THURSDAY, MAY 20th — SALE ENDS TUESDAY, MAY 25th  
STORE HOURS: Daily 9 a.m. to 5 p.m. THURS., FRI., & MON., 9 a.m. to 9 p.m.

**5 FACTORY OUTLETS MASTER BUFF MFG. CO 5 FACTORY OUTLETS**

2032 Stoner Avenue, West Los Angeles — ARIZONA 7-9007  
6188 Sepulveda Blvd., Van Nuys—ST 6-1901 2431 Compton Blvd., Gardena—MEIno 4-9373  
9069 Van Nuys Blvd., Van Nuys—EM 2-3264 8332 Osage Ave., L.A. 45—ORchard 1-9926

# GIGANTIC CLEARANCE Sale

rugs • bedding • furniture

## Why Pay More?

Here are 5 good reasons why it pays to shop at TORRANCE FURNITURE:

1. WE SELL FOR LESS.
2. WE GIVE YOU MORE.
3. WE ALLOW MORE FOR YOUR TRADE-IN.
4. WE HAVE THE EASIEST TERMS.
5. WE GUARANTEE EVERY PURCHASE.

**SOFA & CHAIR** WITH WROUGHT IRON  
Newest furniture fashion — smart wrought iron in a modern sofa and chair with distinctive covering (Similar to Illustration) **159<sup>88</sup>**

**hollywood beds**  
Hollywood bed with plastic upholstered headboard & inner-spring mattress, only **39<sup>88</sup>**

**roll away beds**  
Rollaway bed with steel frame, inner-spring mattress at terrific savings **24<sup>88</sup>**

**mattresses**  
Sale special! Inner-spring mattress with full-coil construction, fine cover **39<sup>88</sup>**

**bunk beds**  
Complete bunk bed outfit including springs and comfortable mattress, 7-pcs. **59<sup>88</sup>**

**Torrance FURNITURE** FREE DELIVERY.  
We Make Your House a Home

OPEN FRIDAY Open Eves. By Appointment  
1255 SARTORI — Next to Bank of America FAirfax 8-5550  
YOUR OUT OF STATE CREDIT IS O.K.

# RATED NO 1.....

BY LEADING INDEPENDENT RESEARCH LABORATORY

# NORGE

**SAVE \$40<sup>00</sup>**  
WAS \$279<sup>95</sup>  
**YOURS FOR \$239<sup>95</sup>**  
LESS TRADE-IN ALLOWANCE FOR YOUR OLD WASHER

MODEL AW 422

**NO MONEY DOWN**  
**ONLY \$2<sup>42</sup> PER WEEK**  
**MATCHING GAS or ELECTRIC DRYERS AVAILABLE**

**SEE THIS NEW NORGE IN ACTION!**  
**ONLY NORGE HAS ALL THESE FEATURES**

- Time-Line Control
- Wave-Action Wash
- 5-Way Warm Rinse
- Super-Spin
- Flush-to-Wall Construction
- Porcelain Top
- Baked Enamel Cabinet
- 8-9 Pound Load

**1817 SEPULVEDA**  
**DAILY 9 TO 9**  
**SUNDAY 1 TO 5**  
**SERVES YOU BEST**

**MANHATTAN BEACH**  
**FR. 4-7468**  
**FR. 2-8453**  
**SELLS FOR LESS**

# PURDON'S

### TORRANCE CHIROPRACTIC CENTER

SPECIALIZED HEALTH SERVICE USING DRUGLESS METHODS  
Particular attention to Rheumatism, Arthritis, Liver, Gallbladder, Ulcers, Indigestion, Colitis & Constipation.  
X-RAY, FLUOROSCOPIC & LABORATORY TESTS  
Members of California & National Chiropractic Association

R. A. LARSON, D.C. 1110 SARTORI AVE., TORRANCE PH. FA. 8-3733  
THREE DOORS NORTH OF TORRANCE BLVD.

J. W. HEDDEN, D.C. PH. FA. 8-3733