

# MIKE'S GARDEN FRESH

## Vegetables

HOME GROWN, VINE RIPENED IMPERIAL

### TOMATOES

Over 2 lbs.

# 15<sup>c</sup>

Basket

FANCY, LARGE, WHITE ROSE

### POTATOES

6 lbs. 19<sup>c</sup>

FRESH PICKED, GREEN, SOLID

### CABBAGE

1<sup>c</sup> lb.

SWEET, JUICY, THIN SKIN COACHELLA

### GRAPEFRUIT

We Haul These Direct From Orchard To You!

5 for 19<sup>c</sup>

FRESH, TENDER, UTAH TYPE

### CELERY

Large Stalks

6<sup>c</sup> ea.

## Church News

### MAY FELLOWSHIP DAY OBSERVANCE PLANNED

Church women of Torrance will meet tomorrow, May 7, to observe May Fellowship Day at the First Christian Church, 2930 Eldorado. The one o'clock program will include a panel discussion on women's place in the community, the installation of officers, and a devotional service. Mrs. Arthur G. Solomon, president of the Torrance Council of United Church Women announces. Assisting her in preparations are Mesdames John Almond, C. W. Bartholomew, Howard McDonald, Alan Moore and J. F. Wehrli.

Preceding the program, members of the host church under the chairmanship of Mrs. Bartholomew will serve coffee, tea and cookies during the noon hour. Many women plan to bring a sandwich and enjoy an informal luncheon during this fellowship hour.

#### Officers

Installing the first officers of the Torrance Council will be the Reverend J. J. Walker of the First Christian Church. In addition to Mrs. Solomon, those to be installed include Mesdames M. M. Schwab, first vice-president; John Parks, second vice-president; K. D. Figgins, corresponding secretary; Cecil Alter, recording secretary; and A. C. Turner, treasurer.

These officers represent churches participating in the United Church Women's Council, Christian, Evangelical United Brethren, Episcopal and

congregations have been invited to join the group as individuals.

#### Child Care

Child care will be provided during the day, through the courtesy of the First Christian Church, Mrs. Bartholomew says. For further information, interested persons are asked to call Mrs. Cecil Alter, FA. 8-5914 or other officers.

### Northrop Honors Harold Embrey

Harold E. Embrey, 17113 Eastwood avenue, Torrance, has been presented with a gold pin in recognition of 10 years' service with Northrop Aircraft, Inc., Hawthorne, according to an announcement by John B. Clark, Northrop industrial relations director.

### POST OFFICES SCHEDULED FOR DISTRICT

Every community in the 17th District now is scheduled for expanded postal service, veteran Congressman Cecil R. King revealed today.

King said that new post office buildings and the expansion of present facilities have long been planned.

He added that the Senate's Lease-Purchase bill which last week was passed by a Democratic-Republican coalition could give limited help in activating the building program.

But he warned:

"Any candidate who, for political reasons, implies that construction could have been started sooner . . . or that he

### Service Club Ball Schedule

Service club slow-pitch softball games are scheduled as follows:

MAY 11 OPTIMISTS VS LIONS

MOOSE VS JR. C OF C. Wednesdays at Waveria Park.

MAY 12 WALTERIA B.M.A. VS ROTARY

AMERICAN LEGION VS SPORTSMEN.

Torrance Park is located at Arlington and Santa Fe. Waveria Park is located at Highway 101, two blocks west of Hawthorne boulevard. First games start at 7 p.m. Second games start at 8:30 p.m., it was announced by Elmer "Red" Moon.

can arrange to have work begun immediately must assume the obligation of changing the policy of the Eisenhower administration or the Republican Congress."

remember

# Mother

MAY 9TH



New **GE AUTOMATIC COFFEE MAKER**

The beautiful, new G-E Automatic Coffee Maker brews coffee to your taste. Indicator light tells you when "coffee's ready". Makes 2 to 9 cups.

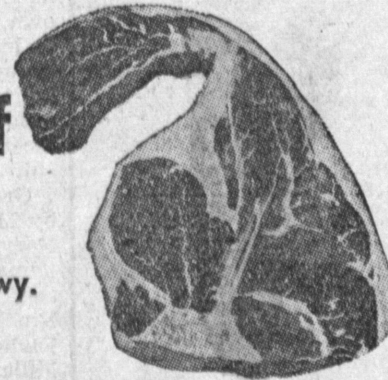
Only \$29.95

## NICOLA'S

1875 W. CARSON ST. — (Near 5 Pt. Inter.)

### "NEW" OPENING SOON

THE Prime Beef SHOP



715 N. Pacific Cst. Hwy. Redondo Beach Independently Owned

In the DeSimone Shopping Center South Bay's Newest and Finest

**SPECIALTY MEAT MARKET**

• TOP QUALITY MEATS • FISH & POULTRY SERVICE DEPT. SPECIALIZING IN

Meat Cut to Order Meat Wrapped For Freezer.

Mira Loma Turkeys Farmer Floyd's Chickens Fresh Fish & Sea Foods Delicatessen Meats & Cheese



MAKE IT HER VERY BEST...

# MOTHER'S DAY

Make this a memorable occasion that stands out as a star-studded date on Mother's calendar of busy days! Make her gifts extra-special—something frivolous and fashion fun! Choose from our gift inspirations to delight mothers of every type . . . to make this her happiest, and best, Mother's Day!

### STRUM'S GIFT SUGGESTIONS

- DUSTERS
- NYLON DRESSES
- NYLON BLOUSES
- HOUSE DRESSES
- SEERSUCKER ROBES
- NYLON PROPORTIONED SLACKS
- SWEATERS
- STOLES
- 36 Sq. In. SILK SCARVES
- Every Day Of The Week PANTIES
- A Fine Selection Of PURSES
- LUGGAGE
- BELTS
- LINGERIE
- TABLECLOTHS
- TOWELS
- SHEETS
- PILLOW CASES
- BLANKETS
- COMFORTERS
- BEDSPREADS

# STRUMS

DEPARTMENT STORE

1261 SARTORI AVENUE

PLENTY OF FREE PARKING AT THE REAR OF OUR STORE

Open Fri. Nites 'Til 9 P.M.

FREE PARKING! DRIVE-INTO LOT!

UTILITY BILLS HERE (slight charge) AMERICAN EXPRESS MONEY ORDERS

SUNDAY

77<sup>c</sup>

SAVE! LEO

NORTHERN MAID 1-lb. Carton

18<sup>c</sup>

14 1/2<sup>c</sup>

19<sup>c</sup>

39<sup>c</sup>

39<sup>c</sup>

17<sup>c</sup>

10<sup>c</sup>

36<sup>c</sup>

30<sup>c</sup>

32<sup>c</sup>

39<sup>c</sup>

2 for 15<sup>c</sup>

2 for 25<sup>c</sup>

39<sup>c</sup>

24-oz. Box

Wax 59<sup>c</sup>

1-lb. Tin

33<sup>c</sup>

1/2 Gal.

29<sup>c</sup>

CENTER

ning of the

ket.