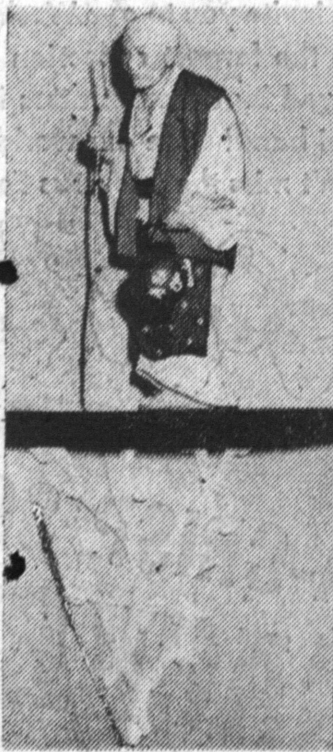


Society

WOMEN'S NEWS CLUB NEWS

Sgt. R. A. Boyd

Army Sgt. Raymond A. Boyd, son of Mrs. Lulu B. Bowlin, 2619 Washington blvd., Santa Monica, recently arrived in France for duty with the European Communications Zone at La Chelle.



Imported figurine of exquisite detail in true life colors. Specially priced at only\$10

Interesting wall shelf is 12" wide, 15" high and 6" deep. Priced at only \$5.00

Exclusively at



2067 Torrance Blvd.

ALTAR SOCIETY SOCIAL TONITE

Tonight at 8 p.m. is the time set for a card party and social at Nativity Hall on Cota Avenue, according to Mrs. Lawrence Gitschler who spoke for Mrs. Regina Cunningham, chairman.

Mrs. Cunningham and her guild members are sponsoring the affair, which will include games, refreshments, and door prizes. Mrs. Gitschler stated. There is a small admission charge, and the public is invited.

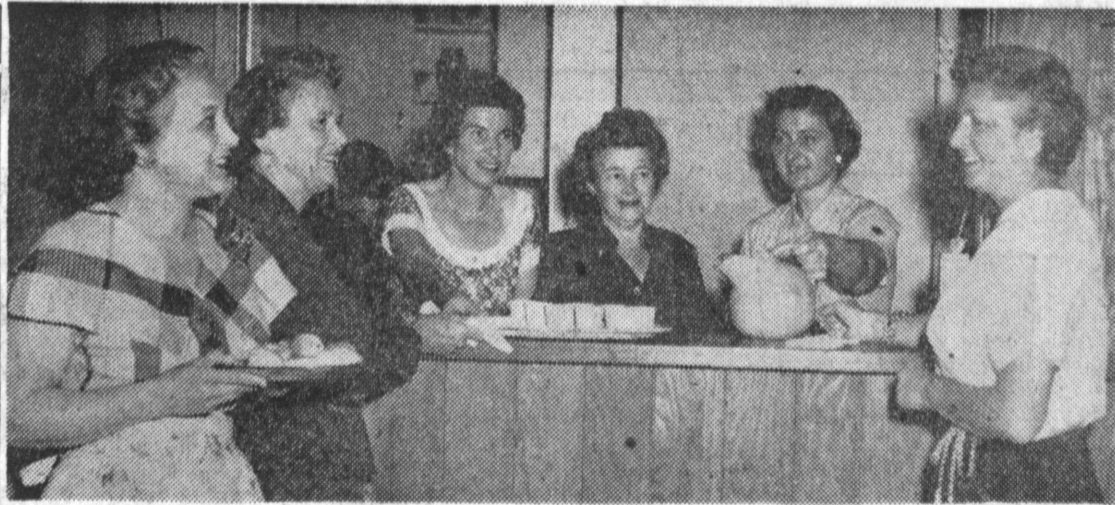
BRUNCH NETS \$400 FOR FOREIGN STUDENT FUND

Community participation, organization cooperation, and donations from local merchants and individuals were factors responsible for the success of the fund raising "ham brunch" given by the Torrance chapter American Field Service International Scholarship (AFSIS) last Saturday, April 24 at the Torrance YWCA.

Tables were effectively decorated with red, white and blue floral arrangements donated by each of the Torrance florists. Following the brunch the flowers were taken to persons in Torrance who are ill.

"Having no expenses, due to the generous donations, the entire proceeds amounting to about \$400 will be used toward bringing two foreign students to Torrance this fall to spend their senior year of schooling at Torrance high school and live as "adopted" members of an average American family in two homes in Torrance," stated Mrs. Willard Key and Mrs. J. E. Popovich, ways and means chairmen for AFSIS. "We would like to thank organizations, citizens and especially the local merchants, for the fine cooperation given our chapter during our first fund raising affair."

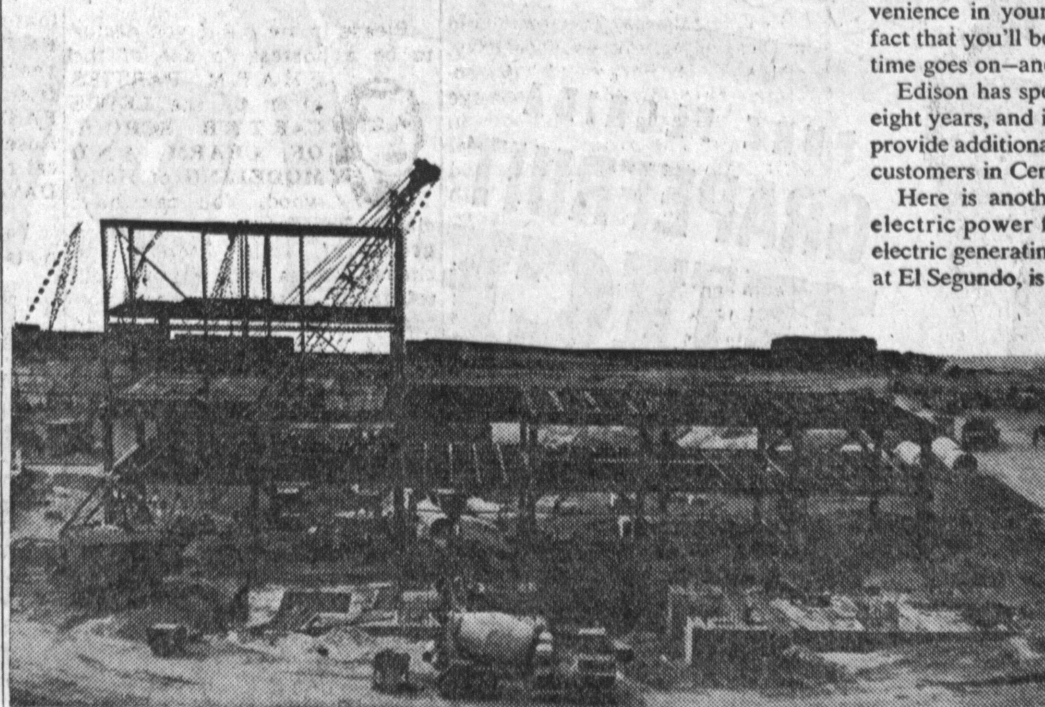
Helping in preparations and serving were Tri-Hi-Y girls, Judi Reid, Lynn Lorenz, Judy Wright, Norma Quine, Judy Nash, Pat Flanagan, Sandy Sanders, Jean Key, and Doris Popovich, chairman; Hi-Y boys Don



BUSY SERVING . . . About \$400 was raised at Saturday's fund-raising brunch held at the YWCA. The money will be used to bring two foreign students to Torrance this fall to spend their senior year here. Helping out are (l-r):

front — Mrs. Grover C. Van Deventer; Mrs. Dean L. Sears; and Mrs. Evar Jansson; back — Mrs. Willard Keys, Mrs. M. M. Schwab, and Mrs. J. E. Popovich.

On the way: More power for YOUR future!



SOUTHERN CALIFORNIA EDISON COMPANY

As an Edison customer, you are a member of one of the nation's fastest growing families. And you are discovering new ways each year to use electricity for comfort and convenience in your home. This combination adds up to the fact that you'll be needing more and more electric power as time goes on—and it is on the way right now!

Edison has spent almost half a billion dollars in the past eight years, and is spending another \$73,000,000 in 1954 to provide additional electricity for the growing needs of Edison customers in Central and Southern California.

Here is another part of our program to provide more electric power for your future. It is our seventh steam-electric generating station. This one, now under construction at El Segundo, is scheduled to begin operation in July, 1955.



Smart wall decor . . . at a smart low price. About 20" tall with ceramic holders for candles. Only\$4.95

Exclusively at



Torrance Blvd.

from the same great **ZENITH** researchers who gave you —The Black Picture Tube...

The Reflection-Proof Screen...The Instant Automatic Station Selector with the Amazing Silver Fingers

NOW COMES

ZENITH'S

CINÉBEAM

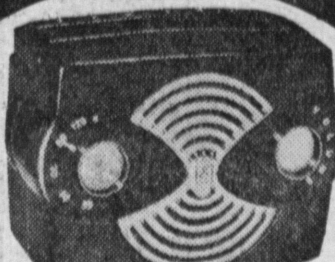
PICTURE TUBE



COBRA-MATIC RECORD PLAYER

3-SPEED — AUTOMATIC
PLAYS ANY SIZE
7, 10 or 12 INCH

Only **\$74⁹⁵**



THE CREST Model K412 Portable Radio

A trim "handful" of smart styling, is this wonderful gift. Exclusive Zenith "Hand-Tenna," and fluchfitting "Pick-Me-Up" handle. Choose your color from Maroon, Dawn Grey, Ebony, or Ivory. Priced from

Only **\$36⁹⁵**

NOW YOU CAN OWN A
27-INCH T.V. WITH A MOVIE-
LIKE PICTURE FOR THE PRICE
OF MOST 21-INCH SETS.

**BIG
TRADE
INS**



ARCHER CONSOLE
L2879E

IF YOUR SET IS	WE WILL GIVE YOU	YOUR BALANCE WILL BE
Size	Trade In Allowance	Your Payments
7" to 10"	120.00	5.87 PER WEEK
12" to 14"	150.00	5.43 PER WEEK
16" to 17"	180.00	4.97 PER WEEK
19" to 21"	240.00	4.68 PER WEEK

IT'S "Natural Look" IN

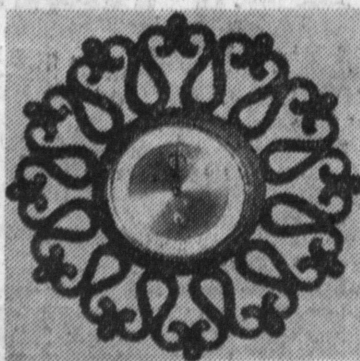


Our new Spring collection of men's clothing. Put away the heavy weights and touch on the lighter side of life — and light is the word for our new lightweight wools and tropical worsteds. Be casual — look free and easy at a moderate price!

OPEN AN ACCOUNT TODAY

TRESKES
Men's Wear

1319 El Prado Torrance



Here's a Sparkling new clock that would enhance any wall. Dependable 8-day movement.

Only **\$19.95**

Exclusively at



2067 Torrance Blvd.

first loves...

of the campus crowd!

Cheer Leaders



WHITE KID
4⁹⁹



WHITE KID
4⁹⁹

Capture the scene of your every dream... Put your best foot forward in Cheer Leaders Flats.

OPEN FRIDAY NITES

TORRANCE BOOTERY

1333 EL PRADO AVE. — (Next to McCown's)

Phone

FR. 2-2616

FR. 4-2616

FOR

**IMMEDIATE
DELIVERY**

**CRIFFEY
ELECTRIC**

212 SO. PACIFIC AVE.

REDONDO BEACH