

Farris Guilty Of Car Death

Donald Farris, whose automobile killed Mrs. Verona Volner, 27, of 908 Del Amo boulevard, February 2, was found guilty of manslaughter by a Long Beach Superior Court, it was reported.

Farris, of the USS Higbee,

rammed into the Volner car when he jumped a stop sign at Normandie and East road. He claimed the boulevard stop was not plainly marked and that the headlights of an oncoming car had blinded him. Farris waved

Harry Van Bellehem, director of parks and recreation, was guest speaker at a recent meeting of the Allied Gardens Home Owners Association.

jury trial for trial by a jurist. He will be sentenced May 4 by Judge Joe Raycraft.

Mayflower

Mark-Down Sale

Bargains Galore! Sale Starts Thursday, 9 A.M.

Dresses

Just in time for Spring—Comes this exciting money-saving dress event. Summer's newest, smartest cottons... washable rayons, sheers—in styles for vacation or town wear. Shop early for these budget-wise beauties!

\$4.99 OR **\$9**
★ FOR ★

Suits

100 hand-picked suits tailored and styled in a tremendous array of colors and fabrics. Don't miss this value.

Regular \$22.99 — Sizes 10 to 18

\$10 ★

NEW SPRING
100% ALL

WOOL TOPPERS

200 100% All Wool Toppers. Fleeces, poodles, suedes and fancy's. All new spring colors including white. Reg. \$19.99

\$10 ★

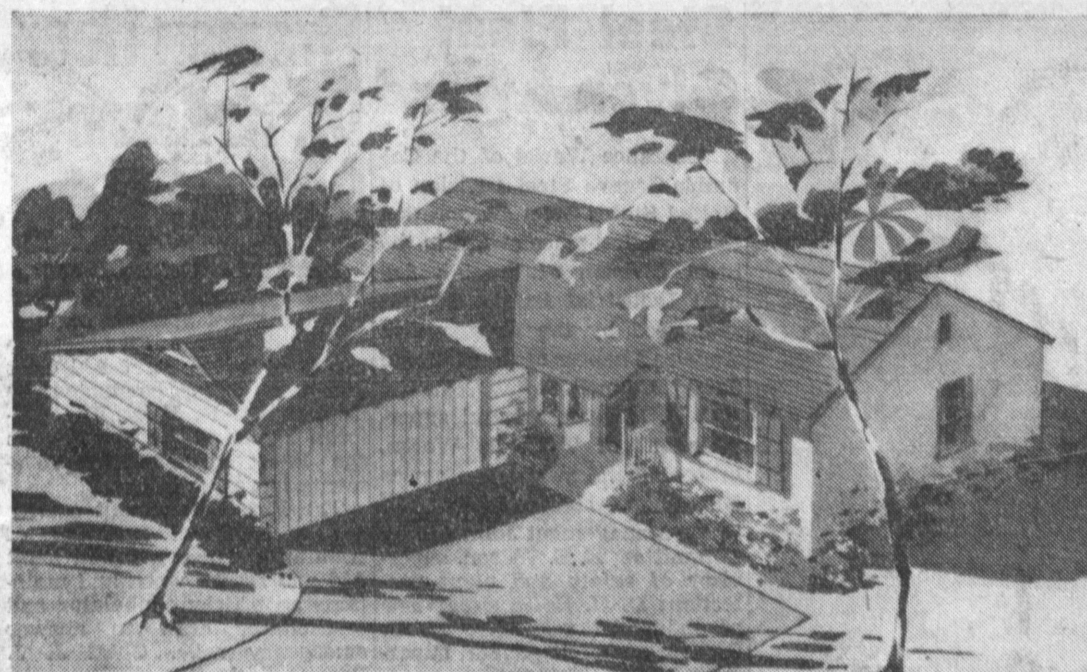
Mayflower

DRESS SHOPS

BUDGET TERMS
TAKE MONTHS TO PAY
NO DOWN PAYMENT

OPEN
FRI. NITES
TIL 9 P.M.

1323 El Prado Ave. (Next to McCown Drug) Torrance



MONETA GARDENS — Typical home in this new residential tract located at 186th Street and Normandie Avenue is this architect's sketch. This home will sell for about \$10,950, according to a representative of the South Crenshaw Realty company, sales agent for the Property Management corporation, Moneta Gardens developers.

Moneta Gardens Opens Furnished Model Home

Seventy-two of the 140 dwellings in the new residential community of Moneta Gardens are ready for occupancy by non-veterans and veterans at \$1,350 down, according to officials of Property Management Corp., 15502 S. Crenshaw Blvd., builders and developers.

The rest of the homes are scheduled for completion within 30 to 60 days, they added.

This new project represents an investment of approximately \$1,500,000, and has an outstanding location near all major industries and is only a few blocks from an elementary school and the new Garden High School to be constructed this year.

A distinct advantage to the residents of Moneta Gardens is the short distance to the intersection of the proposed Sepulveda and Harbor freeways, which will give the community easy accessibility to all points.

The three bedroom dwellings, with one or two baths, which feature a large selection of exterior elevations, include in their appointments dining area, large kitchen with eating space, natural mahogany doors, natural kitchen cabinets, hardwood floors, garbage disposers, "Dish-Whiz" dish washing attachments, large floor furnaces, aluminum screens, two-car garages, clothes poles, and incinerators.

The builders point out that sewers, sidewalks, curbs and streets are in and paid for.

Furnished models are open daily and Sunday from 9 a.m. to 7 p.m., and are easily reached by driving to Normandie Ave. and 186th St.

OPEN HOUSE AT THE HARBOR CITY SCHOOL will be held April 29, during Public Schools week, according to Mrs. Avis Creech, principal. As part of the day's program, a spaghetti dinner will be served from 4:30 to 7:30 p.m. Students' work will be on display in the classrooms from 5:30 to 7:30 p.m.

ing to a representative of the South Crenshaw Realty company, sales agent for the Property Management corporation, Moneta Gardens developers.

Call For Bids

Despite the city's offer to pay \$1000 for the mineral rights at Torrance Municipal Airport, the Federal General Service Administration is going ahead with plans to advertise for bids.

The city was informed of this in a letter last week. The rights were kept by the federal government when the field was turned over to the city following World War II.

HONORED BY A TRIP to Terminal Island was Mrs. P. Orseth, Red Cross chairman for 259th place School P.T.A. Mrs. Orseth was chosen for the tour by the Red Cross because she had the highest percentage of quota and organization in the Lomita-Harbor City area.

Firestone BRAKE SPECIAL

Here's What We Do... **350** Value

1. Inspect Lining
2. Clean, Repack Front Wheel Bearings
3. Add Brake Fluid
4. Inspect Grease Seals
5. Adjust Brake Shoes
6. Test Brakes

19 ANY CAR
★ ★ ★ ★ ★
COMPLETE BRAKE AND FRONT END SERVICE
6 Months To Pay

Firestone
The Big Firestone Corner
At Marcelina & Cravens Ave., Torrance

WANTED

RELIABLE PARTY TO ASSUME

BALANCE ON 1953

CORONADO REFRIGERATOR.

PAYMENTS \$8.50 PER MO.

GAMBLE'S WESTERN AUTO SUPPLY CO.

1269 SARTORI AVE.

FA. 8-1575

TORRANCE

- IMMEDIATE POSSESSION
- AN OUTSTANDING LOCATION
- NEAR ALL MAJOR INTERSECTIONS

MONETA Gardens

186th STREET & NORMANDIE AVE.

FURNISHED MODEL HOMES

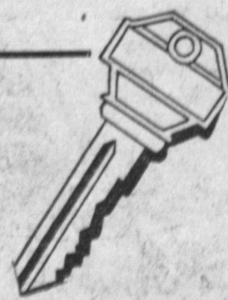
OPEN DAILY AND SUNDAY — 9-7

3 BEDROOM

and 1 and 2 BEDROOM HOMES

LARGE SELECTION OF EXCITING EXTERIOR ELEVATIONS AND STEP SAVING FLOOR PLANS

YOUR KEY



To FUTURE HAPPINESS

MONETA GARDENS

\$1350

DOWN PAYMENT
VETS AND NON VETS

PROPERTY MANAGEMENT
CORPORATION
BUILDERS & DEVELOPERS

APPOINTMENTS FOR "EX-TRA" LIVING COMFORT

- 2 CAR GARAGES
- HARDWOOD FLOORS
- DINING AREAS
- ALUMINUM SCREENS
- GARBAGE DISPOSERS
- BUILT IN DISH WASHERS

- NATURAL MAHOGANY DOORS
- LARGE KITCHEN WITH EATING SPACE
- NATURAL KITCHEN CABINETS
- NEAR SCHOOLS, SHOPPING & TRANSPORTATION
- LARGE FLOOR FURNACES
- CLOTHES POLES & INCINERATORS

SEWERS, SIDEWALKS, CURBS AND STREETS IN AND PAID

Moneta Gardens

186th STREET & NORMANDIE

MENLO 9-4303

