

The United Jewish Welfare Fund campaign in the Southern section of Los Angeles will open its 1954 drive April 1.

Dr. Arthur Berke and Sam Levy of Torrance are the local division chairman and co-chairman respectively. The Welfare Fund supports 177 local, national and overseas relief, rehabilitation and welfare agencies.

NOW OPEN! JULIA'S HOBBY SHOP

Ceramics & Porcelain Lessons
• Firing • Supplies
Come In Today or Call At
21802 Grace St. TE. 4-7883

Realtors To Hear A. Binns

Prominent business authorities are scheduled to appear on the Realtors' Sales Conference Rally to be held April 27 at Culver City, according to L. I. McLellan, president of the California Real Estate Association, in a letter to Perry L. Connett, president of Torrance-Lomita Realty Board.

Featured speaker will be Arthur W. Binns of Philadelphia. Binns is recognized as one of the nation's top real estate advisors.

Walter E. Elieson, business specialist, United States Department of Commerce, and Dr. Philip Neff, Associate Professor of Business Economics at

Catch Grand Theft Suspect

Earl Warren Clark, 35, who has been the object of a search since last December, was arrested last week and will stand trial on charges of grand theft, according to Det. Sgt. Percy Bennett.

While working as a commissioned salesman for Raeco Engineering Co., 1807 Torrance blvd., Clark allegedly turned in a fraudulent order for which he received a commission.

Clark was caught through the joint efforts of the Torrance and Los Angeles police departments.

The University of California at Los Angeles, are participating on a "Business Outlook Panel."



—Press Photo
QUITE A CHUNK . . . George Wahler (l-r), Red Cross representative, and Hugh Sherkey, Torrance drive chairman for commerce and industry, accept a \$1250 check from D. M. Sowle, National Supply company representative. National Supply's contribution represents 20 per cent of the total contribution in this area. National Supply company employees contributed an additional \$1700.

No Exaggeration

Editor,
Torrance Press:

May I be allowed, as an individual avidly interested in "My Town," "My Paper," and "My Community," to direct this letter through you, to your 28,000 readers. It came as a complete shock to me to realize how little "my people" in "my town" knew of our existing problems in all of the rapidly growing areas of Torrance. This knowledge came to me during the political rally sponsored by our Chamber of Commerce at the Civic Auditorium in Torrance, April 8.

This matter was brought to my attention when one of our candidates for the council, Mr. Frank Burk, brought up our complete lack of facilities, such as lights, play areas for our children (where mothers get gray trying to keep their children out of the streets), and very rare bus service. I overheard some comments to the effect that this was an exaggeration from several women who were sitting behind me.

I want to go on record right now to say that this is no exaggeration, and any interested party need only to drive to some of these new residential districts such as Victoria Terrace, Sepulveda and Allied Gardens, Seaside Ranchos and Heights, and Hollywood Riviera to mention a few that I am personally familiar with. Off hand I would say each one of these tracts consists of two to three hundred homes with an average of two children per home.

Perhaps it would do some

Plant Changes Work Hours To Assist Traffic

A move to reduce traffic congestion along main commuter routes was made by North American Aviation this week with a new schedule of working hours and a redirection of traffic at its main plant and 11 supporting facilities including the Torrance plant, it was announced.

North American's new working hours separate arrival times for office and production employees by 24 minutes and departure times by 36 minutes. Previously, both groups began work at 8 a.m.

Under the new plan, production workers begin at 7:42 a.m. and end their shift at 4:12 p.m. Office employees start work at 8:06 a.m. and depart at 4:48 p.m. The staggered shift hours avoid arrival and departure times at other industrial plants in the area by 30 to 40 minutes.

Also a part of the traffic jam solution was an increased share-the-ride program begun March 12.

good if our metropolitan area residents drove around "our town" and woke up to the fact that Torrance is "growing up," and it's no ALL in the metropolitan area. We pay taxes too! We also vote!

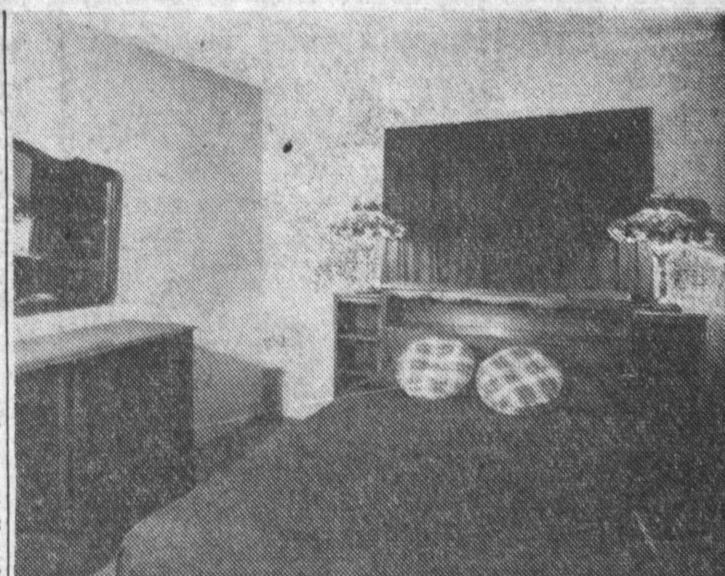
Sincerely,
Mrs. Erman Sharp, Jr.
5403 Palos Verdes Blvd.,
Allied Gardens, Torrance

Detectives At Check Conference

Detectives Captain Ernie Ashton and Sergeant Percy Bennett of the Torrance Police Department returned this week from a two-day check conference held in Sacramento April 8 and 9.

The conference was sponsored by the FBI and the Bureau of Criminal Investigation and Identification.

"We brought back many valuable ideas which will help us in our investigations and reports," Bennett stated. "The conference was quite impressive. We went through the CII Bureau and saw how every type of crime is filed and cross-filed. The bureau processes 14,000 fingerprint cards per month. It also has on microfilm every teletype sent out throughout the state every day since 1951."



"STORY BOOK HOME"—Master downstairs bedroom in four bedroom, two bath "Story Book" home, offered by Milton Kauffman Construction Company on Ellenwood St., south of Sepulveda in northwest Torrance. Homes are on the rolling hills with view lots, the builder said.

'Story Book Homes' Open For Inspection This Week

A larger and more elaborate version of two story, four bedroom, two bath home developed by the Milton Kauffman Construction Corporation is now on view at the new "Story Book Home" location south of Sepulveda on Ellenwood.

This new community of 1200 sq. ft. homes in the rolling hills of northwest Torrance is being opened for public inspection this weekend, according to officials of the construction firm.

The second story, with its two large bedrooms, bathroom and many closets, is said to be the major point of interest to most home seekers. Downstairs there are two more bedrooms, a full bathroom, large living room, and a big living kitchen with loads of natural finished wood cabinets and unique papered ceilings.

Step-saving is the byword in the planning of these houses. The two-story plan permits grouping of all work convenient to the kitchen, easily reached by the busy housewife. Ample window area assures light in every corner. Asphalt tile kitchen floor simplifies cleaning, the builder points out. While each house is finished as an individual project, homes in this community share such details as dual gas furnaces, AGA-approved 30-gallon auto-

'Carson' Name Made Official

The designation "Carson" was made official by the County Board of Supervisors, it was revealed this week.

The board ordered the name to apply to the area bounded by Lomita Blvd., 190th St., Wilmington and Normandie Aves. It formerly was known as Key-stone.

Notice of the designation was ordered forwarded to all county departments for use in all county actions pertaining to the area.

Picture Framing

- CUSTOM WORK
- WOOD FRAMES
- PAINTINGS &
- PHOTOGRAPHS

PHOTO ARTS STUDIO

1311 Post Ave. FA. 8-2830

ATTENTION:

Sunbeam's factory representative will be at Lawson's Friday, 12 noon to 9 p.m. — Bring your electric razor in to be serviced. While you're visiting Lawson's see our complete line of Famous Sunbeam appliances. They're a blessing to housewives.

5 Year FREE Service Guarantee

Sunbeam Shavemaster is the Only shaver with a REAL motor, which has a powerful brush type, service wound, 16-bar armature, and exclusive long-lasting nylon crank-shaft drive mechanism. Because of these and other superior engineering features and workmanship Sunbeam offers you a FIVE YEAR FREE service guarantee.



ON THE NEW Sunbeam SHAVEMASTER

Only the Sunbeam Shavemaster has the bigger, single, smooth head and powerful 16-bar armature REAL motor—that's why it shaves closer and faster than any other method, wet or dry. \$27.50

OPEN FRIDAY NIGHTS 'TIL 9 P.M.



Lawson's
JEWELLERS

Phone FA. 8-4313

1317 El Prado
TORRANCE

DON'T MISS THIS DEAL!

TRADE-IN Your OLD Carpet

WE NEED USED CARPET NOW FOR OUR
USED CARPET DEPARTMENT

WE WILL ALLOW UP TO
\$150.00 FOR YOUR
OLD CARPET

SAVE

\$400
sq. yd.

All wool sculptured patterns

SAVE

\$500
sq. yd.

All wool tone-on-tone.

SAVE

\$350
sq. yd.

Royal axminster floral

SAVE

\$400
sq. yd.

Wool frieze.

9'x12'
RUG
PADS

495 ea.

Reg. 10.95

9x12

WOOL
REVERSIBLE
Variety of Colors \$36.50

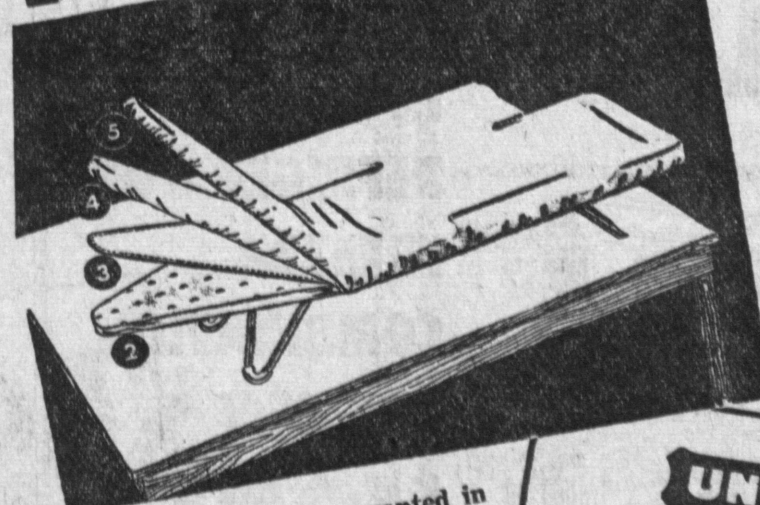
Heavyweight
LINOLEUM RUGS

9'x12'

Regular 9.95

4.95

YOURS
FOR JUST 1c



Get this new
FEATHERWEIGHT
PORTABLE
IRONING
BOARD

For just 1 cent
when you buy
this...

All the features you've wanted in
one light weight Steam 'n Dry
Iron. Save on pressing bills. Iron
without dampening. Weighs
only 3 1/2 lbs. Right or left
hand cord.

UNIVERSAL

"JIFFY SWITCH"

CLICK—It's Steam

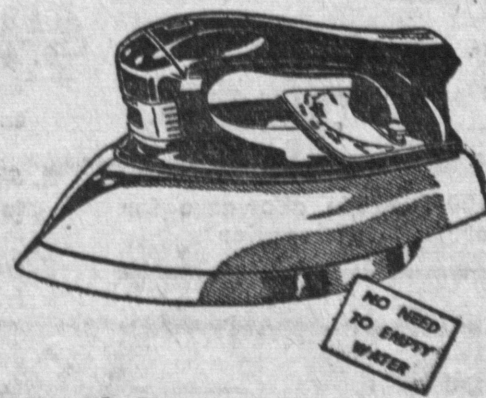
CLICK—It's Dry

It's new! Convenient size
all - metal Ironing Board
for all your ironing jobs.
Folds flat. Comes with
Pad, Cover and Cover
Saver.

50c
DOWN
A WEEK

FOR ONLY

\$19.95



UNIVERSAL
Lightweight
STEAM 'N DRY
IRON

RECORD BROS. CARPET

FR. 4-4395 16827 HAWTHORNE BLVD. FR. 2-8481

1 BLOCK NORTH OF REDONDO BEACH BLVD.

UP TO
24 MONTHS
TO PAY

OPEN
EVENINGS
MON., THURS.,
FRI.

- SHOP AT CONTRACTOR'S SHOWROOM
- BUY AT CONTRACTOR'S PRICES
- BUY ON CONTRACTOR'S TERMS—60 DAYS SAME AS CASH

Corner of Sartori and El Prado in Torrance

Phone FA. 8-1252

Mc Mahan's
FURNITURE STORES