

4 VITAL BOND ISSUES

(Continued from Page 1)

According to City Manager George Stevens.

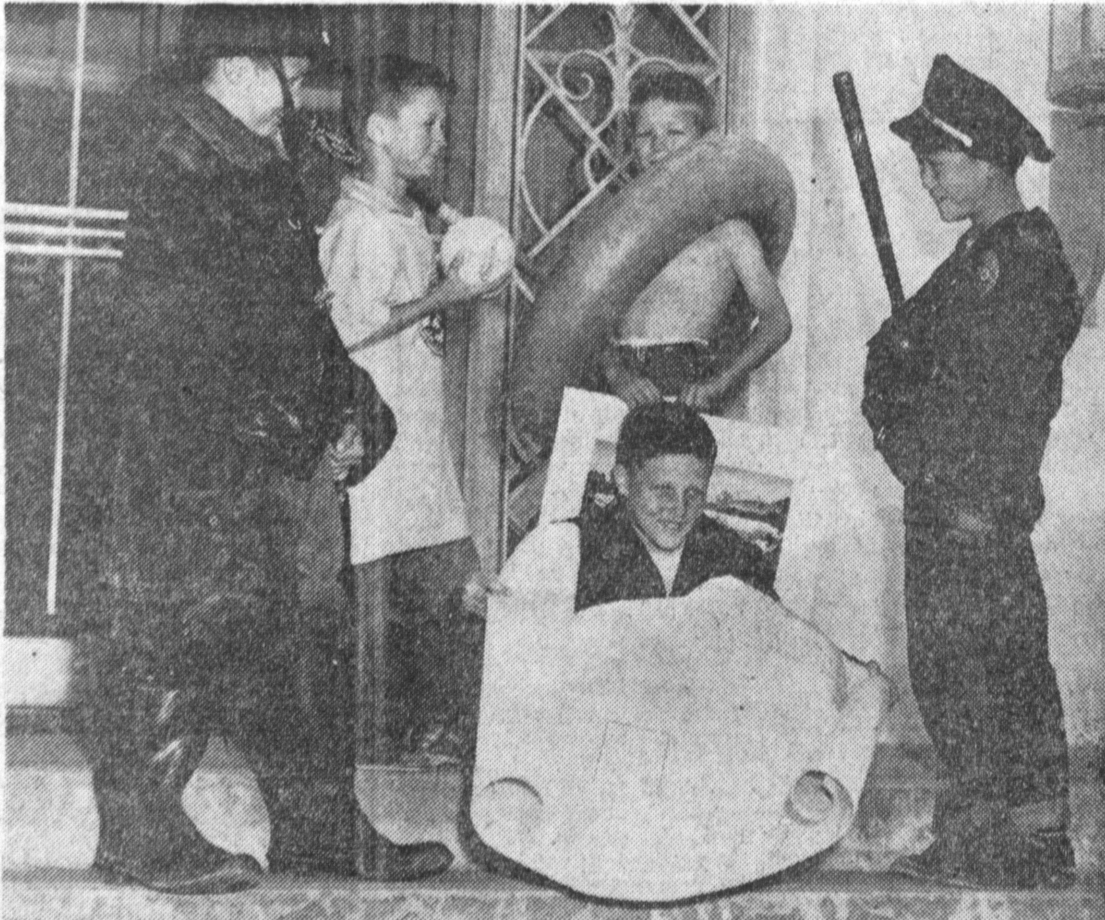
All four bond issues are included in this cost. The rate will become even less after the first year, Stevens said.

"The importance of passing these bonds just can't be stressed enough," Stevens said. "We have not kept up with the city's growth. We want Torrance to be a first class city."

Cost Break-Down

"The cost of these bonds to the average homeowner is practically negligible," the city manager said, "when you consider that industry will pay two-thirds

4 Bonds and 5 Examples



—Torrance Press Photo

"WE WANT TO GROW WITH TORRANCE" is the thought behind the four bond issues which will appear on the ballot this Tuesday, April 13. As illustrated by these youngsters, the bond propositions call for (l-r): more fire

fighting facilities (Ronnie Scott); more recreational facilities (Eddie Henderson); a new civic center (Dannie DeVort, seated); a centrally located swimming pool (Jess Jacobs) and a larger police department (Gary Katsuki).

of the cost and the homeowners will only pay one-third.

"The cost of the four bond issues individually for the first year for the average taxpayer breaks down as follows: 1) civic center and police station, \$1.50; 2) fire department improvements, 64 cents; 3) parks and recreation improvements, 32 cents; 4) construction of a swimming pool, 54 cents. The total cost is \$3 per year," Stevens stated.

Comparison

The most effective way to stress the need for a new civic center, the city manager stated, was to compare the size of the present one to that of other cities.

The Torrance city hall is 11,000 sq. ft. in size and the police station 2500 sq. ft. Inglewood, with a population as large as Torrance, has a city hall which is 30,000 sq. ft., and a police station which is 12,000 sq. ft. Whittier, with an even smaller population than Torrance, has a city hall which is 38,000 sq. ft. and a police station which is 16,562 sq. ft.

Torrance's proposed civic center is to be located North of Torrance blvd. between Maples and Madrona and bordered by Maricopa. The police station and the city hall are confined to such close quarters that it is impossible to operate efficiently, especially as the city continues to expand, Stevens said.

Shopping Center

By moving the civic center, the present buildings will be turned over to commercial use, thus permitting the downtown shopping district to expand and provide more parking facilities, the city manager explained. Separation of the civic center and the shopping area is the trend in all modern municipal develop-

ments, Stevens said, and cited Lynwood, Arcadia, Santa Monica, and Los Angeles as examples.

The water department, gas company, Edison Co., and telephone company will remain where they are, Stevens stated.

New Fire Stations

The fire department bond issue, proposition No. 2, is of extreme importance, the city manager stated, in order to provide continued protection to this mushrooming community. The

bond will provide money for a new central fire station to be located on the southwest corner of Carson and Crenshaw, which land is owned by the city.

A station will also be built in the vicinity of Calle Mayor and Pacific Coast Highway. Facilities at the other stations will be increased, it was stated.

Recreation Facilities

Proposition No. 3 calls for the development of parks and recreation which residents from all parts of Torrance have been ask-

Free Child Care Offered To Voters

Two hours of free child care service are being offered to

ing for over a period of years. The money would be spent approximately as follows: El Retiro Park, \$15,000; McMaster Park, \$37,000; Seaside Park, \$43,000; Torrance City Park, \$29,000; Waltheria, \$26,000.

The recreation bond will provide: enlarged, picnic facilities; new, enlarged, and improved recreation buildings; night-lighted game courts and ball diamonds; walks and landscaping; play equipment for young children; rest room facilities; maintenance quarters; off-street parking; fencing along dangerous streets; night-lighted tennis courts; nine-hole pitch and putt golf course; bleachers.

Pool

Bond issue No. 4 calls for a swimming pool to be located at the proposed new civic center north of Torrance blvd. between Maple and Madrona. Swimming, life-saving classes, canoeing, and small craft safety classes will be offered to both children and adults. The pool will be available for the use of the physical education classes in the school district during the school year. Water shows, swimming meets, and other aquatic events will be held in the pool, it was explained.

If passed, all these improvements will be built and installed within one year, it was stated.

mothers who desire to vote on Tuesday, April 13 in the municipal elections.

Mrs. Margot Bergmann, director of Guys and Dolls Nursery, 2815 Arlington ave., urges mothers who have no one to care for their youngsters on election day, to stop by the nursery. All children will receive care by skilled personnel. Mrs. Bergmann declared that mothers wishing to take advantage of the free baby service must sign a waiver permitting the school doctor to supervise any medical care in case of accidents.

Persons desiring the baby care service on Tuesday may call FAIRfax 8-4486.

Mr. and Mrs. James F. Clevenger, 2214 W. 239th St., Torrance, announce the birth of a son, Robert Dale, born on April 5, at Torrance hospital, and weighed 7 pounds and 14 1/2 ounces.

Hollywood Riviera

Start Grading On 550 Homes

Grading has begun on a new \$9,000,000 community in Hollywood Riviera off the Hollywood-Palos Verdes parkway, west of

Pacific Coast highway, it was disclosed this week. Involved are 550 homes on a 144-acre ocean frontage site acquired from Louis B. Mayer, former MGM head.

Acquisition of the land was confirmed by J. George Wright, president of the Don-Ja-Ran Construction corporation, and Melvin Hirsh, president of the Peerless Building corporation.

CAPS POULTRY

1615 Cabrillo Ave. - Torrance - FA. 8-3748

CLOSED MONDAYS

WE RAISE OUR OWN - FRESH DAILY

CHICKEN BY THE PIECE

Oven-Ready, Large Capon 69¢ lb. ROASTERS 69¢ lb.

SHOPPING FOR

EASTER

TRY THE Kafeteria Shoe STORE. Shoes for the Entire Family at a Great SAVINGS!!

WE HAVE 1 LOT OF

LADIES' SANDALS

Reg. \$2.49

NOW \$1.69

MULTI-COLORS - ALSO WHITE

EDWARD'S

CHILDREN'S SANDALS

Blue & Tan Mesh
Red & Tan Mesh

Reg. \$7.95

\$2.99

ONE LOT OF

JUMPING JACKS

Shoes & Oxfords

Also in white
and Brown
Not All Sizes

\$2.99

1/2 OFF!

KAFETERIA SHOE STORE

1115 SARTORI AVE., TORRANCE

1/3 OFF!

"Mary . . . Did you know that CARSON MART is giving 5 & H Green Stamps with all food purchases now?"

"That's good news, because CARSON MART is handy and there's always plenty of parking in front of the store . . . I'm shopping at CARSON MART from now on!"

CARSON MART

1929 W. Carson St.
(Next to the Palms Restaurant)

What's the Easiest Way...

To drive a screw into hard wood?



Drill a hole slightly smaller than the screw diameter. Rub screw with soap. Using screw driver that fits slot in screw, turn slowly and firmly into place.

What's the Easiest Way...

To put your family bill-paying on a sound business basis?

Open a low-cost ThriftCheck account at this Bank. Then you can pay your bills the way big companies do—with checks bearing your own name printed. You have a record of all bills paid and your cancelled checks are legal proof of payment.

Your name printed free on every check. ThriftCheck—no minimum balance, no charge for deposits, no monthly service charge.

OPEN YOUR **ThriftCheck** ACCOUNT TODAY

"A FRIENDLY TORRANCE INSTITUTION"



TORRANCE NATIONAL BANK

Torrance California

MEMBER FEDERAL INSURANCE CORP.

Walker's

the friendly store of Long Beach



everything for boys and girls—from infants to junior teens in

WALKER'S

Land O' Youth

FOURTH FLOOR

ride the escalators to 4th floor

Dressing up for Easter—from the Skin Out!

Wool Shag Coat with adjustable sleeve length—lets the coat grow with the girl. Beige, pink, gold. Jr. Teen Sizes 10-14. **16.95**

Sizes 7-14. **14.95**

Organdy Dresses for big and little sisters. Permanent finish for lasting freshness. Val lace trim. Sizes 7-14. **5.95**

Sizes 3-6X. **4.98**

Easter Hats in straws and linens. Bevy of styles in white, navy and pastels. **1.98 to 3.98**

Handbags in plastics and straws, many decked with spring bouquets. Easter egg colors. **1.00 to 2.98**

Anklets in cottons or in nylons—in dress matching colors and white. **39c to 65c**

Petticoat tiered nylon in white. Sizes 2-14. **2.98**
Jr. Teen Sizes 10-14. **3.98**

Nylon Slip in 4-tier style. White. Sizes 2-14. **2.98**

Rumba Panties with rows and rows of nylon net ruffles. Sizes 2-8. Rayon tricot. **1.00**

Nylon tricot. **1.98**

Frou-Frou Panties by Kleinfert's. For dress-up, to slip right over diaper. S-M-L-XL sizes. **1.98**

for the real young Easter Set

Coat and Bonnet Outfit in rayon with the linen look. Lace-trimmed collar, seed pearl trim. Pink or maize. Sizes 6-18 months. **10.95**
Sizes 1-4 years. **12.95**

Nylon Bonbon Dresses by Nannette as featured in Good Housekeeping. Plain and sculptured nylon, sashed in black velvet. **5.95**
Sizes 1-3.

GIRLS' AND INFANTS' WEAR FOURTH FLOOR

WALKER'S STORE HOURS:

Fridays 12 noon 'til 9 p.m.
Other days 9:30 to 5:30

LONG BEACH

Pine at Fourth
Phone 707-451

PARK FREE

Victoria Auto Parks—1 hour, with purchase of \$1 or more
Tickets validated service desk each floor