

## Kent To Head Cancer Drive

A whirlwind cancer drive during the week of April 8 has been promised by Marvin Kent of the Prudential Insurance Co. who has been appointed chairman for the central Torrance area.

Many volunteers are needed in this annual drive and Kent



—Photo Arts Studio  
MARVIN KENT  
... to head cancer drive

has issued a call to all who can participate to contact him at FA 8-0441.

Other district chairmen who will work in conjunction with Kent are Mrs. Vera Wright, North Torrance; Mrs. Julius Aranoff, Shoshone; and Mrs. Dorothea O'Brien, Waverly.

## Odd Fellows To Sponsor Card Party

The Odd Fellows Club of Long Beach is sponsoring a card party, Saturday, March 27, at 8 p.m. The home of Warren Powers, 1727 W. 247th St. will be open to all who desire to attend. There will be prizes for the highest scores and refreshments for all.

The Odd Fellows Club will hold a special meeting at the above address on Tuesday, March 30, at 8 p.m. Under discussion will be plans for the April 17 institution.

## Waverly To Get New Post Office

Confirmation from Washington, D. C. was received this week approving the new Waverly station of the Torrance post office, it was reported.

The 2000 sq. ft. building to be leased by the post office department is being built by G. A. Bauman. The building will be located in Waverly Village (on Highway 101 near Hawthorne). A one-off-hi way parking will be provided.

Construction will begin as soon as plans are complete with the hopes of being finished by August.

### CHILLED FOODS

Foods which are to be prepared in an automatic gas clock-controlled oven should be thoroughly chilled before they are placed in the oven if there is to be any "standing time" before the cooking begins.

### CLIP AND SAVE!

**This Ad IS WORTH \$2.00**  
On Our Expert

**WHEEL ALIGNMENT**



### SERVICE

A Regular \$7.50 Value Is This Ad, CLIP AND SAVE! Yours For Only \$5.50 With

**PAUL'S CHEVROLET**  
1640 CABRILLO AVE.  
Phone FA. 8-1640

## COMEDY TO PLAY 4 TIMES

A comedy, "Affairs of State," will be presented by the Hampton Players at Redondo Union High School April 2, 3, 9 and 10, it was announced.

Tickets are now available by calling FR 5-2371 or contacting any member of the Hampton Players.

Stage sets were designed by Ray Wallace of Hollywood Riviera.

Included in the cast are: Jim

## Exec Council Discussed By Democrats

The 68th Assembly District Democratic Council held a special executive meeting last week at the Alan Richard Hall, it was announced.

It was decided that the executive council will be made up of two delegates and two alter-

Reeves, Mary Woodson, Carl Rodgers, Pat Rodgers, Bruce Sutton, and Frank Callahan.

nates from each chartered Democratic club with a minimum of 25 members, one county committeeman, and one state committeeman, along with the elected executive officers. The Women's Study Club and Dime-A-Day Club will have one delegate and one alternate each until a membership of 25 is reached.

The new Wilmington Women's Study Group was accepted into the council, along with the Dime-A-Day Club for this district.

The 68th District Council met Monday night with all the clubs in the 67th and 47th Assembly Districts, which comprise the

Thursday, March 25, 1954

TORRANCE PRESS

Page 3

## No. Torrance Teen-Agers To Form Club

A teenage club for all North Torrance boys and girls 13 to 15 years of age has been planned by the Torrance Recreation Department. All boys and girls interested in this club are asked to attend a meeting at McMaster Park, 174th & Yukon, Monday, March 29, at 7:30 p.m.

The following Friday night, April 2, the club will meet again to elect officers. Hot dogs and cakes will be served.

Les Breitenfeldt will be in charge of supervision. He will be assisted by Barbara Billings.

### Scrap Metal Drive

Boy Scout Troop No. 241 is presently conducting a scrap metal drive, canvassing this entire area. Material may be delivered to 1030 Engracia. Anyone desiring scrap to be picked up may phone FA. 8-0303.

### Picture Framing

CUSTOM WORK  
WOOD FRAMES  
PAINTINGS &  
PHOTOGRAPHS

**PHOTO ARTS STUDIO**  
1311 Post Ave. FA. 8-2830

# YOU BUY FOR LESS AT McMAHAN'S

## ALWAYS GET THE MOST FOR YOUR MONEY AT McMAHAN'S

# CHARGE YOUR DOWN PAYMENT

# this COMPLETE OUTFIT at McMAHAN'S

# BIG 3 ROOM GROUP

# BUY ... 30 MONTHS TO PAY

**BED DIVAN**  
SLEEPS TWO  
2 - End Tables  
1 - Coffee Table  
1 - Cricket Occasional Chair  
2 - Table Lamps  
2 - Pair Drapes

**INCLUDED**

**McMahan's FURNITURE STORES**

**A BUDGET OUTFIT AT BUDGET PRICES**

**BEDROOM**  
Count 'em, 8 pieces! Big Headboard Bed, huge Mr. & Mrs. Dresser with a large Mirror, Fine quality Mattress & Box Springs, Chenille Spread and 2 Feather Pillows.

**SPREAD INCLUDED**

**MATTRESS & BOX SPRING INCLUDED**

**6 WOOD LEGS FOR BED INCLUDED**

**DINETTE**  
So smart, so practical! So easy to keep clean. Large mar-proof top table and 4 matching chairs in gay plastic covered seats and backs.

# YOU GET THE WHOLE WORKS ONLY \$299

## 30 MONTHS TO PAY

EVERY PIECE FINE QUALITY FURNITURE!

# McMahan's FURNITURE STORES

Conveniently Located On The Corner of Sartori & El Prado Ave. In Torrance Phone: FA. 8-1252

**CHOOSE ...**

Your Own Colors.  
Your Own Finishes.

PURCHASE ANY ROOM SEPARATELY

8-Pc. LIVING ROOM \$110.48

8-Pc. BEDROOM \$171.28

5-Pc. DINETTE \$59.95

**SAVE 42.57!**

when you buy the 3 Room Group!

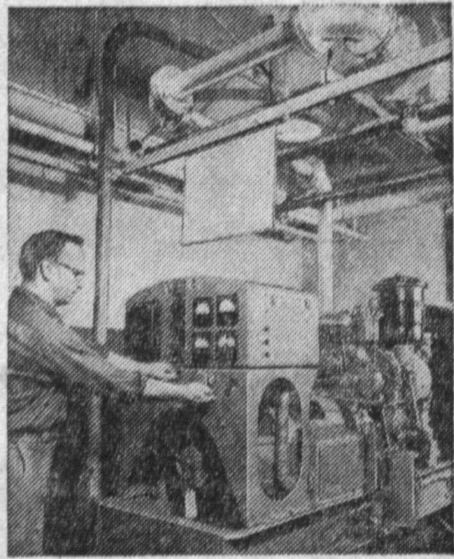
## WHAT'S DOING

R. S. Pyle, your Telephone Manager in Torrance

## Emergency power for your telephone

Once in a great while, because of storms or other emergencies, a telephone central office may be cut off from its usual source of electric power. But this doesn't interrupt telephone service. In your central office are special electric generators, run by gasoline or diesel engines. And they take over the job of charging the large storage batteries that supply the current to run the telephone system.

Planning ahead for emergencies is another way we make sure you have dependable, low-cost telephone service when you need it. Pacific Telephone works to make your telephone a bigger value every day.



Coast-to-coast calls cost only \$2.50 plus tax

Just think—you can call clear across the country—for just \$2.50 plus tax. This is the day station rate for the first 3 minutes. Calls over shorter distances—to Chicago, Salt Lake City, etc., cost less. Still lower rates apply for all calls on Sundays and after 6 p.m. on weekdays.



## How you can enjoy even better telephone service

If yours is a party-line, you will receive even better service by following these simple points: When you have a series of calls to make, take time out between them. This gives other people a chance to reach you. Before you call, make sure the line is clear. And in cases where someone else has to make an emergency call while you're talking, the thoughtful thing is to hang up and call back later. Pacific Telephone.

