

FREE PARKING!
TO-DRIVE-INTO LOT!

QUALITY MEATS HERE (slight charge)
CAN EXPRESS MONEY ORDERS

SUNDAY

53¢

SAVE!

STEW

Y MOORE
oz. Can
9¢

11 1/2¢

38¢

Kitty 50¢

33¢

20¢

Meat 47¢

RUP 29¢

29¢

IA 38¢

Can 35¢

20¢

4 for 24¢

Wax 59¢

16¢

SPRY

1-lb. Can

32¢

..... 35c

16 TEA BAGS 21c

LITTON

21c

21c

MIKE'S GARDEN FRESH

Vegetables

EX. FANCY LONG WHITE ROSE

POTATOES
10 lbs. 37¢

TENDER, SWEET, CRISP UTAH TYPE

CELERY
4 Large Each

Oregon Newton Pippin, Fine for Pies, Sauce, Eating

APPLES
3 lbs. 25¢

FRESH PICK DAILY

CRISP Mild GREEN
Radishes ONIONS

2 bun. 5¢

FRESH SWEET RED FLAME, TOKAY

GRAPES
9 lb.

Education Building Ready Soon

The pastor, Rev. C. Miles Northrup, and officers of the First Baptist Church, Carson and Manuel streets, report growth in all departments of the work. The new two-story educational building is already roofed and should be ready for occupancy this spring, making facilities for 1000 or more in Sunday school. The present attendance is over 600.

This coming Sunday morning the Boy Scouts will be honored and will serve as ushers. Many parents will also attend. A missionary guest speaker, Rev. B. A. Slocum, home on furlough from the Philippines, will bring

DEAR EDITOR...

Editor
Torrance Press
I am writing to you as you seem to be the only paper in the community that has the nerve to fight for the good of Torrance.

My gripe is the following:
Why cannot we have decent railroad crossings where they intersect the highways. What a disgrace. What good is it to have good streets and highways when you hit these crossings that just about tear the front end of the car apart? . . .

Why is it that nothing has been done to correct this menace? . . . Whoever is to blame should be shown what a dangerous situation exists . . .

Sincerely yours,
(signed E. R. Sands
22952 S. Cabrillo
Torrance

Editor's Note: Mr. George Stevens, city manager, stated that anything within two feet of the rails is the responsibility of the railroad company; otherwise the responsibility lies with the city. Mr. Stevens will be glad to contact the railroad or have the city correct the matter if the bad crossings and their location are brought to his attention in writing.

CAR LEAFLETS

Editor
Torrance Press
Why must we be subjected, almost daily, to a flood of advertising, slipped beneath the windshield wiper blade, or thrown inside our auto? This invasion of privacy, this lettering of our auto's interior, certainly can be eliminated, if we merely protest. Personally, we feel it's a poor way to advertise, in any case. Ill will is no business builder.

Any comments?

J. G.

25 HOMES LEFT IN NEW TRACT

Only 25 homes are still available of the 721 houses constructed in Victoria Park, 18209

the morning message, followed by communion and the Right Hand of Fellowship.

A nursery is provided for all services.

South Avalon boulevard, it was disclosed this week.

The three-bedroom homes may be obtained for a down payment which is less than \$400. Designed for the average income bracket, the homes and the location feature large wardrobes, new paved streets,

sewers, overhead garage, large level lots, among other items.

Thirty-five hundred people have been brought into the area within a 2 1/2 mile radius. Since 1941, the developer has built 5000 homes in the Gardena, Norwalk, Palos Verdes and Torrance areas.

HEY! It's July in February at Benson's

LOOK AT THIS EARLY BIRD SPECIAL!



You'll Save on This
SCOOP!

COTTON
BATHING
SUITS

VALUES TO 7.98

\$4.98

1271 SARTORI AVE.
TORRANCE FA. 8-4032

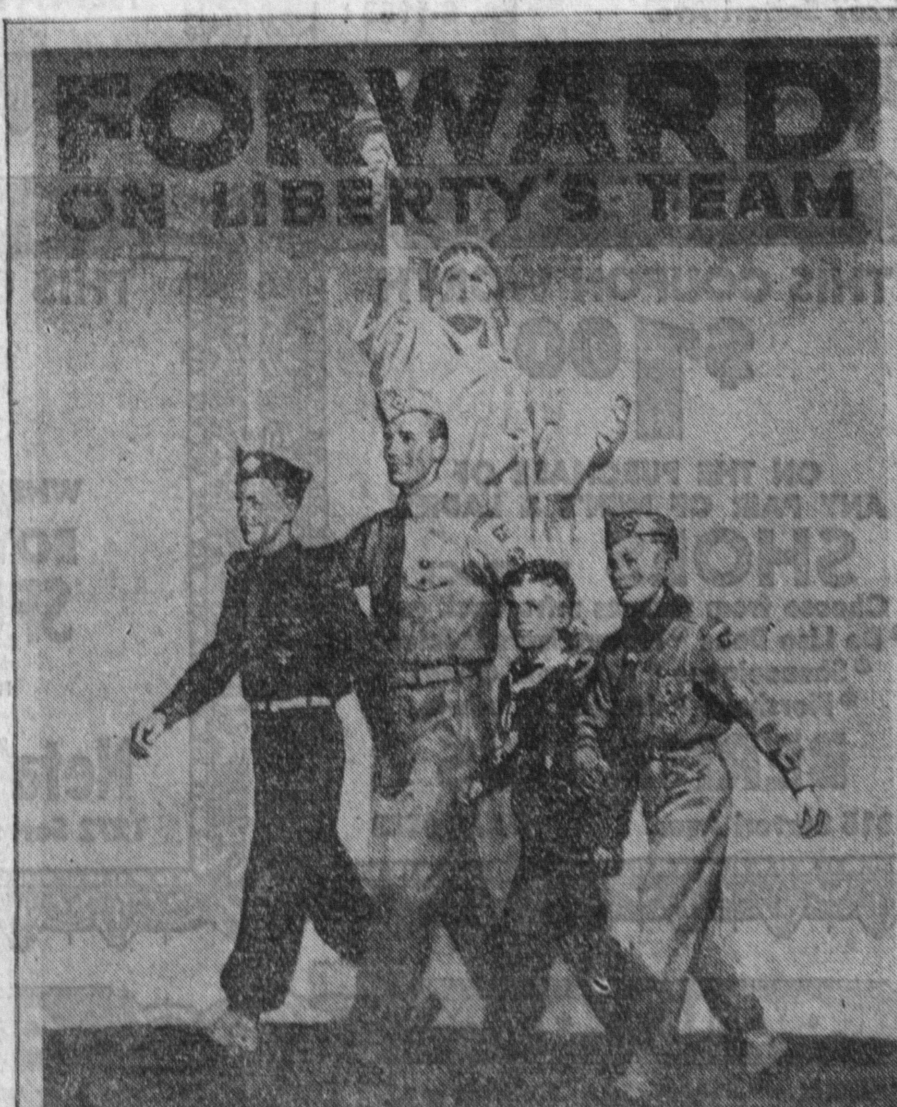
CONVENIENT BUDGET
TERMS — OPEN. FRI. EVES.

Strums Salutes

**BOY SCOUT
WEEK**



On this 44th anniversary of the Boy Scouts of America, we salute them for their many fine achievements and admirable principles... for contributing so many outstanding citizens to our great country...



**44th ANNIVERSARY 1954
BOY SCOUTS OF AMERICA**

STRUM'S
is your local Scout
station for all
Scout uniforms &
accessories.

Also we stock the official Boy Scout shoes (widths A-D).

STRUMS

1261 SARTORI AVE. — OPEN FRI. NITES UNTIL 9 P.M.