



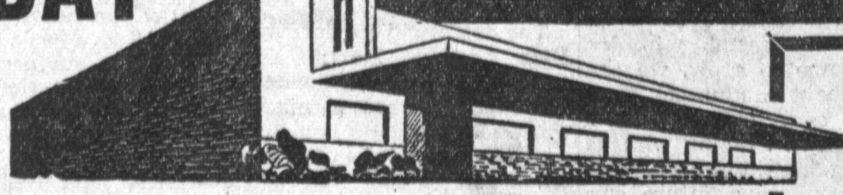
*Good Eating...*  
**AT PRICES YOU CAN AFFORD!**

**THURSDAY FRIDAY  
 SAT. SUNDAY**

**NOVEMBER 5, 6, 7, 8**

**IN HAWTHORNE - 423 S. HAWTHORNE BLVD. IN GARDENA - 15017 S. CRENSHAW BLVD.**

# MARKET TOWN



WHERE EVERY  
 PENNY COUNTS

**OSCAR  
 MAYER  
 LUNCH  
 MEAT**

SQUARE 12 OZ. CAN

**35<sup>c</sup>**

**GUARANTEED  
 FRESH  
 EGGS**

MEDIUMS  
 DOZEN IN CARTON

**49<sup>c</sup>**

**SNOWCROP  
 FROZEN  
 PEAS**

LARGE CARTON

**12<sup>c</sup>**

**KOUNTY KIST  
 CREAM CORN**

**2 TALL  
 17 OZ.  
 CANS 23<sup>c</sup>**

**FRESH PRODUCE**



U.S. No. 1  
 WHITE  
 ROSE



**POTATOES**

**10 Lb. Bag 29<sup>c</sup>**

AN EXCELLENT  
 ALL PURPOSE POTATO FOR  
 BAKING, FRYING, BOILING.  
 ESPECIALLY SELECTED FOR  
 QUALITY, SIZE AND COLOR

FRESH CUT GREEN  
**CABBAGE**

SOLID HEADS  
 FRESH, CRISP  
 LOCALLY GROWN

**3<sup>c</sup> lb.**

EXTRA FANCY RED  
**VELVET YAMS**

SELECTED FOR SIZE AND  
 QUALITY FOR BAKING  
 OR CANDYING

**7<sup>c</sup> lb.**

**FANCY DATES**

1 LB. PKG.  
 DEGLET NOOR  
 CALIFORNIA

**21<sup>c</sup>**

**'S OLEO  
 CHEESE**

POUND  
 QUARTERED  
 IN CARTON

**18<sup>c</sup>**

**ROAST BEEF**

2 BORDEN'S  
 3 OZ. FOR

**25<sup>c</sup>**

**A FIGS**

STOCKTON  
 BREAKFASTS

LARGE  
 NO. 2 1/2  
 CAN

**23<sup>c</sup>**

**STARCH**

ZIPPY  
 QUART JAR

**19<sup>c</sup>**

**SAUCE**

OSTROM  
 WITH SLICED  
 MUSHROOMS

6 OZ.  
 CAN

**10<sup>c</sup>**

WITH RAISIN SAUCE

**OSCAR  
 MAYER HAMS**

PRESSED - CHOPPED **\$1<sup>25</sup>**  
 23 1/2 OZ. CAN

**LIQUOR and TOBACCO**

Canyon Cove  
 Kentucky  
 Straight  
**BOUR-  
 BON**

4 Years  
 Old  
 Bottled in  
 Kentucky **3<sup>49</sup>**  
Fifth

Graves  
 Distilled  
**DRY  
 GIN**

90 Proof  
 100% Grain  
 Neutral  
 Spirits **98<sup>c</sup>**  
1/2 Pint

Ron Pava  
 Imported  
**RUM**

7 Years  
 Old  
 Gold  
 Label **2<sup>79</sup>**  
Fifth

CHATEAU  
 PHILLIPE  
 Creme De  
**CACAO**

The Ideal  
 After  
 Dinner  
 Drink **2<sup>98</sup>**  
Fifth

423 South Hawthorne

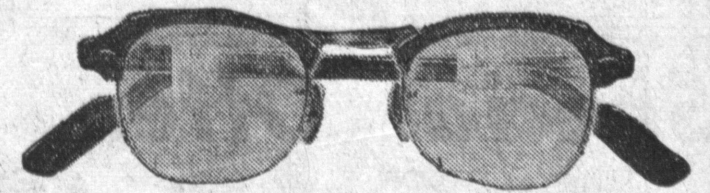
HONEY FLAVORS

Most popular flavors of honey are heather, lavender, orange-flowers, white clover, rosemary, basswood, sage, and lime tree.

OLDEST COWS

The Brahman, oldest of all breeds of cattle, was first imported into the United States from India, 40 years ago.

**YOUR GLASSES NEED  
 NOT BE EXPENSIVE!**

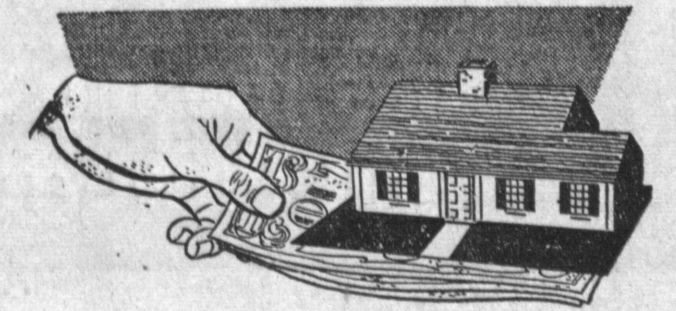


We Can Scientifically EXAMINE YOUR EYES and Furnish You With the Finest GLASSES at Prices Every Family Can Afford

- Open all day Saturday for your convenience. Evenings by appointment.
- Wear Glasses while paying. Small weekly or monthly payments arranged.
- Broken Lenses replaced in our own precision laboratory (bring the pieces). FAST SERVICE.

**DR. J. M. SOSS  
 DR. A. F. KLINE**

DOCTORS OF OPTOMETRY  
 Eyes Scientifically Examined - Glasses Accurately Fitted  
 In Torrance—1268 SARTORI AVE.—FA. 8-6602  
 IN Wilmington—810 Avalon Blvd.—TE. 4-5464



Here is the Way to Start the Financial **FOUNDATION** OF YOUR NEW "DREAM HOME!"

**3 1/2%**

Per Annum  
 CURRENT INTEREST

Open an insured savings account today! Turn your funds each week or month into interest bearing savings. Accumulate the financial foundation of your new home quickly, conveniently and safely! We'll see you next pay day!

FUNDS RECEIVED BEFORE THE 11th EARN INTEREST FROM THE 1st!

**HAWTHORNE  
 SAVINGS**  
 AND LOAN ASSOCIATION

JOHN BAUMGARTNER, President  
 OR-8-5802 OS-5-1198  
 Corner 130th Street and Hawthorne Boulevard  
 SAVINGS ARE INSURED TO \$10,000.00

Measure your **DOLLARS** SAVING POWER here!

Saving makes the difference between "getting by" and getting ahead. Decide how much you are going to save each pay day. Then make this addition to your savings account regularly.

LET YOUR SAVINGS DOLLARS WORK FOR YOU  
 You add your savings dollars—and we add earnings twice a year.

Funds placed with us before the 11th of November will earn from the 1st of November

**YOUR SAVINGS INSURED**  
 up to \$10,000

Two convenient locations, or we're just as close to you as your nearest mail box.

We are open Friday evenings until 7:30  
 OUR CURRENT DIVIDEND RATE ON SAVINGS IS

**3 1/2%**  
 PER ANNUM

**Inglewood FEDERAL SAVINGS**  
 AND LOAN ASSOCIATION

B. K. Richardson  
 PRESIDENT-MANAGER

170 NO. LA BREA at REGENT  
 Phones: OR 1-7561 OR 8-6181  
 INGLEWOOD, CALIFORNIA

WESTCHESTER BRANCH—8910 Sepulveda Blvd.