

Limit Rights Reserved

MARKET TOWN

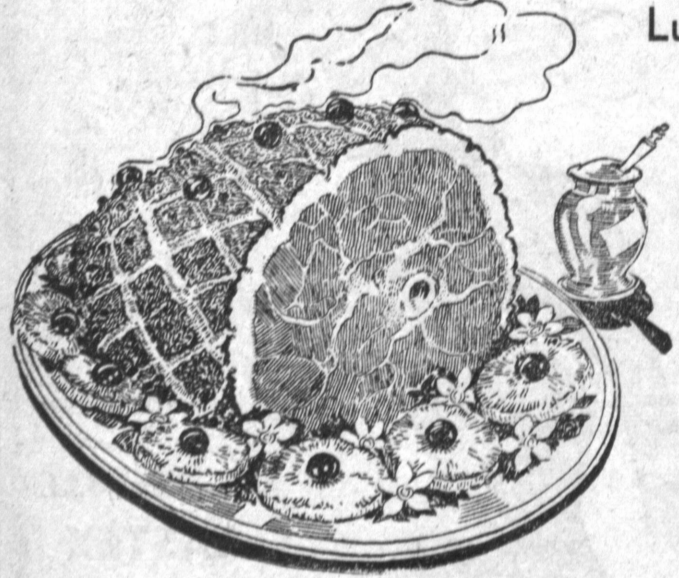


15017 S. Crenshaw at Compton

★ GUARANTEED MEATS ★

GIANT FOODS

Luer's Finest Quality
Hickory Smoked - Tenderized



HAMS

SHORT SHANK
TRIMMED OF EXCESS
FAT BEFORE WEIGHING

55^c lb.

FULL SHANK HALF

WHOLE HAMS 59^c

Fresh Grade A EGGS

MEDIUMS
DOZEN IN
CARTON

49^c

STRAWBERRY JAM

TOP FLAVOR

2 -LB. JAR

39^c

U.S. Graded Choice
And Good Steer Beef

CHUCK ROASTS

SELECTED FIRST CUTS

33^c lb.

U.S. Graded Choice
And Good Steer Beef

7-BONE ROASTS

BEST CENTER CUTS

37^c lb.

Trimmed Waste-Free
Choice Steer Beef

O-BONE ROASTS

BEST CUTS ONLY

43^c lb.

Kingan's Circle (K)
Hickory Smoked

SLICED BACON

1 POUND PACKAGE

59^c lb.

Fresh Dressed
Delicious - Economical

ROASTING RABBITS

3 TO 5 LB. AVERAGE

35^c lb.

Swift Premium
Long Island - Clean as a Pin

Oven Ready DUCKLINGS

3 TO 5 LB. AVERAGE

59^c lb.

HUNT'S PORK & BEANS

3 NO. 300 CANS 29^c

IMPORTED SARDINES

SHIRLEY BRAND IN OLIVE OIL 2 FLAT CANS 33^c

CORNED BEEF HASH

ARMOUR STAR POUND CAN 29^c

PURE ELDERBERRY JELLY

20-OZ. JAR TROPICAL 43^c

BREAKFAST FIGS

RIPE KADOTAS IN HEAVY SYRUP LARGE NO. 2 1/2 CAN 25^c

ORANGE PEKOE TEA

MARKET FULL POUND BRAND CELLO BAG 79^c

Fancy Grain Fed Yearling
LAMB LEGS Shank and Excess-Fat Removed 39^c lb.

Grain Fed Utah Yearling
LAMB SHOULDERS Square Cut 25^c lb.

Delicious Economical Yearling
LAMB BREAST Stew or Barbecue 8^c lb.

Fresh-Not Frozen
SALMON Center Cuts Only 49^c lb.

Fancy Northern
HALIBUT Best Center Cuts 39^c lb.

Rainbow - Pan Ready
TROUT 3 to 1 lb. 69^c lb.

Fresh Boneless, Skinless
WHITE FISH 35^c lb.

MAMMOTH GREEN OLIVES

FULL QUART GROGAN

39^c

LIQUOR and TOBACCO

50 Proof
KOSLOW VODKA \$2⁷⁹ per qt.

6 Year Old
Kentucky Straight BOURBON WHISKEY \$3⁹⁹ per qt.

Imported
Balzac Liqueurs Creme de Menthe Peach or Apricot \$2⁶⁹ 5th

Harper's Ferry
A Blend of Straight Whiskey An All Whiskey Blend 4 Years Old \$2⁹⁸ 5th

★ DELICATESSEN ★

From Holland's Lush Lowlands

UNOX IMPORTED HAMS

One Pound \$1²⁹ Two Pounds \$2⁴⁹ Five Pounds \$5⁸⁹

CHEDDAR CHEESE

Mild Creamy 49^c lb.

Breakfast Club Coffee

LB. CAN 79^c

Borden's Dinners

SERVES FOUR 2 for 25^c

Pure Prune Juice

MONARCH QUART 29^c

Pizza Sauce

FLOTILL CALIFORNIA 3 6 1/2 -OZ. CAN 29^c

| | | | | | | | |
|--|---|-------------------------------------|-----------------------------------|---------------------------------|---------------------------------|---------------------------------|---|
| PERSONAL IVORY 4 for 23 ^c | IVORY SOAP MEDIUM 3 for 25 ^c | IVORY FLAKES 27 ^c | CAMAY LARGE 2 for 23 ^c | DUZ Large Box 27 ^c | CHEER LARGE BOX 27 ^c | LAVA SOAP Bar 8 ^c | CRISCO POUND CAN 32 ^c |
| IVORY SOAP LARGE 2 for 27 ^c | IVORY SNOW 27 ^c | CAMAY REGULAR 3 for 23 ^c | TIDE Large Box 27 ^c | DREFT Large Box 27 ^c | OXYDOL 27 ^c | JOY Reg. Bottle 27 ^c | P AND G WHITE NAPHTHA SOAP BAR 7 ^c |

15017 S. Crenshaw corner of Compton

423 So