

# Trash Problem

(Continued from Page 1)

in the near future. As a vital part of keeping our city clean, the sweepers pick up hundreds of tons of mixed refuse each year.

As in the past, garbage and non-combustible refuse are collected by a private contractor. The very favorable contract provides this service at 28c per month for each residence or place of business.

To meet the ever-increasing demand for service by the thousands of new citizens moving into our community, each year the City, through its Street Department, has stream-lined and mechanized its collection operation. The first packer-type refuse collection truck was purchased on September 19, 1950, a second one added during the summer of this year. These units compact the refuse to allow greater capacity in each load, thereby greatly reducing the number of trips and time lost traveling to and from the dump. They also provide a closed, sanitary container for transporting the refuse along the City streets. Because these trucks are most conveniently loaded from containers and cannot take large limbs or branches, the citizens have been asked to cooperate by placing their refuse in containers and by cutting tree trimmings to lengths of not over 6 feet and tying them in bundles not over 15 inches in diameter. This cooperation enables rapid and efficient collection by City crews.

Several years ago, the City was forced to cease the burning of combustible refuse at its dump located at Plaza del Amo near Western Avenue. Cut-and-cover operations (burying) were then carried on at that location until the site was filled. The area will be used in the future for recreation purposes. In the summer of 1952 a fifteen acre site, in the vicinity of Madrona Avenue and Del Amo Boulevard, was purchased as a dump site, with the plan that it would be later used as a City Yard and as the site of a municipal incinerator, if one is to be built. Operation of the dump at the new site was started in August. It has been found that all of the excess earth excavated from the pit can readily be sold at a favorable

price to the City. In fact, the sale of sand and clay from the site may nearly repay the City its original investment in the site. This dump will take care of the City's needs for a number of years. When the operation is complete, all of the land will be fully utilized by the City for other purposes. It is located near the geographical center of our community.

Since open dump burning has been prohibited, the most economical method of disposing of combustible refuse is the open fill or the cut-and-cover method, which has been employed by the City. Current disposal costs to the City are considerably less than \$1 per ton. In even the most modern and efficient incinerators the cost for disposal by burning will amount to at least double this cost.

If the city is to continue its low-cost collection and disposal operation, the cooperation of all of our citizens is required. Some do's and don'ts to observe are:

**DO'S:**

Place your garbage in suitable metal containers with tight fitting lids.

Place non-combustible, tin cans, bottles, etc., in strong containers.

Place combustible refuse in containers.

Cut and bundle tree or hedge trimmings into bundles not over 6 feet in length and 15 inches in diameter.

Always place containers in alley or at curb line on the evening before the day of pick-up.

Pick up garbage cans and refuse containers as soon after collection time as possible.

**DON'TS:**

Don't mix garbage with other refuse.

Don't use containers which when filled will weigh more than 40 lbs.

Don't expect collection of rocks, sod, building materials, water heaters, fenders, etc. These are not household refuse.

Despite the convenient and frequent refuse collection service provided by the City, there is a growing menace to the health and cleanliness of our community by the indiscriminate dumping of refuse on our streets and highways.

# Santa Set for Lomita Party

Santa Claus is all set to hand out candies and gifts to all Lomita youngsters who attend the Christmas party being held tomorrow at 4 p.m. at the Lomita Park, 24428 Eshelman ave., according to park director Mrs. Dorothy Kemper.

Carol singing, refreshments, and games with prizes will be provided. The event will be staged in the park building.

Mrs. Kemper disclosed that the park will be closed on Christmas day. The park opens regularly seven days each week at 9:30 a.m.

# Y-Teens to Sing Carols

Members of several Y-Teen groups will sing Christmas carols in the neighborhood of the YWCA clubhouse and the Torrance Memorial Hospital this evening beginning at 7:30, it was disclosed by Mrs. Charlotte Lukes, director of the YWCA.

The clubs participating in the event are Seaside Y-Teens, Betas, Torrettes, Debutantes, and the Freshman Y-Teens and their advisors.

# High School P-TA Plans Fund Raising Breakfast

Torrance High School Parent-Teacher Association laid plans for a gala invitational breakfast to be held during the month of January, at the December meeting of the group, held in the High School Cafeteria.

Mrs. A. B. Cowie, Ways and Means Chairman, proposed the breakfast as a fund raising activity. Her report on the net profits during the operation of the football concession disclosed the fact that additional funds would be needed to meet the budget requirements. \$552.65 was the announced profit on the concession, of which \$276.33 was allocated to the Student Council of the school.

Mrs. V. Caldwell, School Nurse, and Mrs. Lee Flanagan, Health and Welfare Chairman, reported that, as of the present time, no family in need of a Christmas food basket had been called to their attention. \$25.00 previously appropriated for that purpose was voted upon to go into the Torrance Dental Clinic Fund, with instructions to also provide food baskets if needed.

Mrs. E. S. Moon, Membership

Chairman, reported a membership of 343, of whom 33 were teachers secured through the efforts of Mr. Martin Wang, Teacher Membership Chairman.

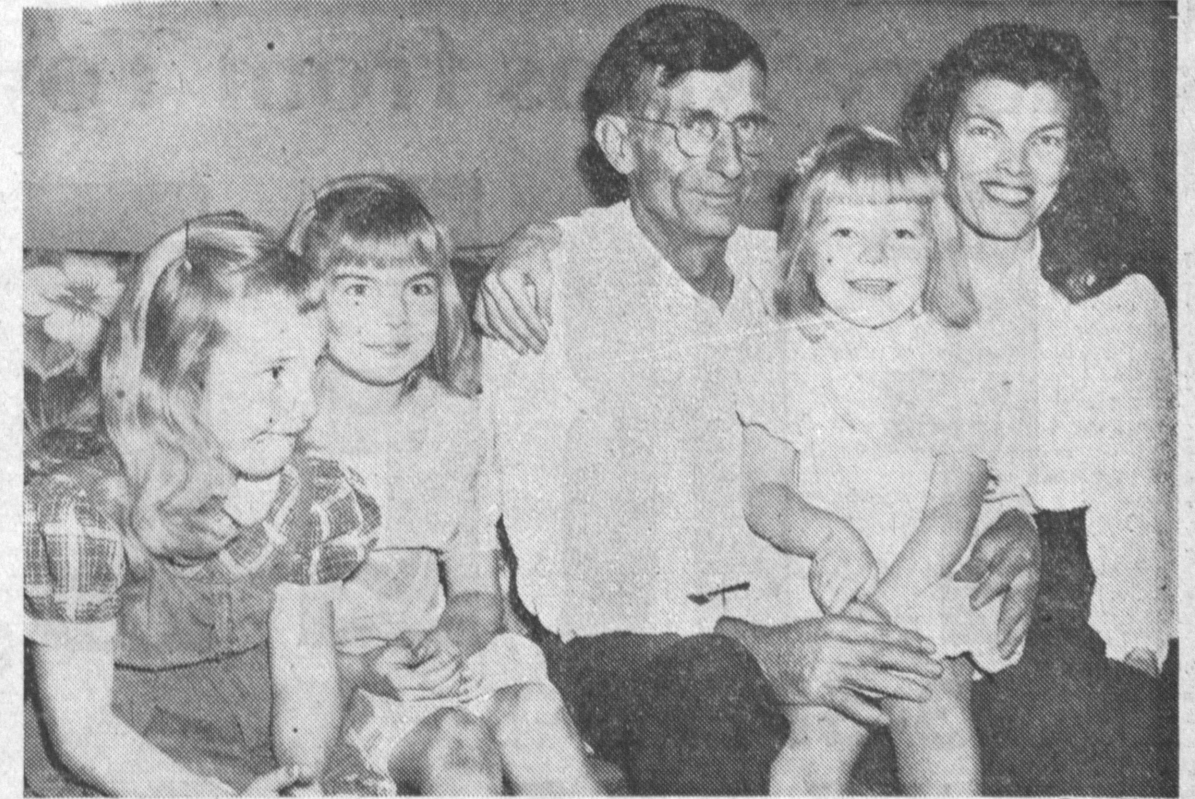
The next meeting of the association will be held in the Library, at 8:00 p.m. Tuesday, January 13. A panel discussion, with foreign exchange students participating, is planned to follow the topic for the month, "Family Life Around the World." Sophomore parents and teachers will receive special recognition and Sophomore mothers will serve as hostesses.

# Radio Stolen

The theft of a GE portable radio valued at \$52 from the Universal Furniture store at 1317 Sartori ave., was reported to Torrance Police Thursday.

The theft occurred some time between Tuesday and Thursday, according to store manager John Gerster.

California National Guard units have been called to active federal service six times, beginning with the Civil War.



**FATHER FOUND**—Russell Welsh, 48, who came to Torrance from Danville, Ky., in response to a letter from a daughter he didn't know he had, meets his three grandchildren. From left to right are Faunell, 7, Patricia, 5, Welsh, Jean, 5, and his daughter, Mrs. Edward Clark. The Welshes separated 26 years ago, before Mrs. Clark was born. For over a year, she wrote letters to various relatives in an effort to locate her father. Her efforts were rewarded in October when one of her letters received an answer. Welsh revealed that he plans to stay here to be near his newly-found family.

**LLOYD DENNEE HAS**

**SPECIAL DELIVERIES FROM SANTALAND**

**A HAPPY HOLIDAY TO ALL!**

The entire staff joins in wishing our friends the **MERRIEST CHRISTMAS** ever!

**THE Gay SHOP**

1319 SARTORI  
PHONE TORRANCE 818

**SEASON'S GREETINGS**

We Wish to Sincerely Thank Our Customers, Neighbors and Friends for Their Patronage, Which Has Given Us Our Most Successful Year—  
**WE DEEPLY APPRECIATE IT**

**Firestone**

Corner Cravens & Marcelina, Torrance

Make this a **TV CHRISTMAS**

MODEL 17T10

**GENERAL ELECTRIC ELECTRIC**

**\$199.95**

INCLUDES FEDERAL EXCISE TAX AND PARTS WARRANTY

DESIGNED FOR UHF & VHF

**MATCHING BASE**

OPTIONAL

**BRING NO MONEY!**

**BUY NOW PAY NEXT YEAR!**

**LLOYD DENNEE'S**

IN TORRANCE: 1875 W. Carson St. (Near 5 Points Intersection) Phone Torrance 1728

IN HAWTHORNE: 110 E. El Segundo Blvd. Phone OSborne 6-0152