

### Cancer Film Shown At P-TA Meet

Two films on cancer and a discussion afterwards highlighted the meeting of the 186th St. P-TA last Thursday. Dick Croft, educational director of Los Angeles County and Dr. Ada Hatcher of the American Cancer Society were honored guests and speakers. Mr. Croft showed the films, an animated cartoon entitled "Trait or Within," and "Breast Self-Examination." Dr. Hatcher narrated the films and afterwards held a question and answer forum. She said there were only three recognized cures for cancer endorsed by the American Medical Association: X-ray, radium and surgery. She emphasized the importance of having a family doctor and the need of frequent examinations especially for women over the age of thirty.

### WEDDING RINGS GROUND UP IN DISPOSAL UNIT

When a garbage disposal unit at the home of Mr. and Mrs. Kenneth Lange, 411 Camino De Las Colinas, Hollywood Riviera, began acting up and emitting silvers of gold and platinum Mrs. Lange began a search for two valuable rings.

In the unit were a diamond from the missing engagement and wedding rings and sapphires from a guard ring. Search ended.

## Society

Women's News Club News

### Junior Women Attend Fund Raising Tea, Fashion Show

The beautiful Crystal Room of the Beverly Hills Hotel was the setting for a Fashion Show and Tea presented by the California Federation of Women's Clubs, Junior Memberships, Los Angeles District on the afternoon of Nov. 15.

The purpose of the affair was to raise funds to support the Los Angeles District Philanthropy for this year, namely the purchase of a rocking bed to aid polio victims.

**Musical Entertainment**  
The entertainment featured radio, television and recording star Joe Graydon, with music by the "Continental".

The fashions were shown by Coulters of Wilshire Blvd., and included many lovely creations for holiday evening wear and other daytime clothes. The fashion director was Mrs. Evelyn L. Arnott and the commentator was Mrs. Shirlee Bickman.

**Refreshments**  
The menu was assorted finger sandwiches, cakes and cookies, tea and coffee.

The tables were prettily decorated in fashion motif by the Wilmar and South Pasadena Juniors. Table favors were perfume given by Coulters and small bottles of Copper-Brite.

Several gifts were won through drawings and the proceeds from these were added to the philanthropy fund. These gifts were given by various clubs throughout the district.

The total attendance was about 250 and those attending from the Torrance Club were Mesdames Warren Perry, Claude M. Wheeler, R. E. Beecher, John Kemp, Geo. M. Cambon, F. P. Foley, R. M. Norris, Arvol P. Smith, Howard J. Percy and local president, Mrs. Douglas P. Baldwin.

Support the Community Chest and its many Red Feather Services!

### Fathers Honored At Narbonne Hi P-TA Gathering

Fathers of Narbonne High school students were feted at the open meeting of the high school P-TA held last Tuesday evening in the school cafeteria.

Approximately 300 members were present for the baked ham dinner served by the P-TA executive board. Community singing followed.

Mrs. J. J. Millard, citizenship chairman for the California State Parent-Teacher Association, was guest speaker at the brief business meeting that followed. Mrs. Don Wolf presided.

Mrs. Wolf announced that the high school P-TA now has a total membership of 1,104. Eight hundred and two are women, and 302 are men, with 100 per cent faculty membership.

Seventeen P-TA members assisted in the Community Chest drive, collecting at total of \$278 for their area. This was in excess of their pre-established quota, Mrs. Wolf reported.

At the close of the meeting, parents enjoyed two and a half hours of square dancing in the school gym, under the direction of Mrs. Elizabeth Hayes, high school teacher.

Mrs. Wolf announced that a Christmas pageant will be presented at the December meeting. Narbonne students will present the entire program.

**GOLD STAR MEET SET**  
Torrance Memorial Chapter of the American Gold Star Mothers will hold their regular monthly afternoon meeting at 2 p.m. on Wednesday, Dec. 3, in the American Legion Hall, Torrance.

Mrs. William Erbe, president, will preside.

The less you have to do with some folks the less you are wroset off.



# TORRANCE HARDWARE

HAS EVERYTHING BUT THE TURKEY!!

## PREPARE FOR A FEAST

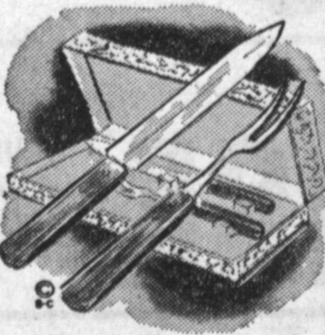
..with these specials



Folding buffet server of polished hardwood. Completely fitted \$14.95



Solid copper and brass, with burner \$21.95



Carving set from \$3.95



Towel tray from \$1.20



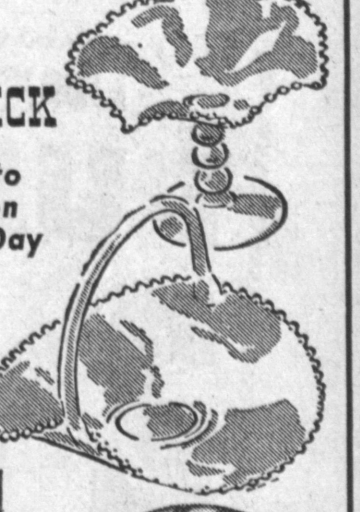
Aluminum ice bucket \$9.95



Salad bowl set complete \$7.95



Cake saver, alum. \$3.79



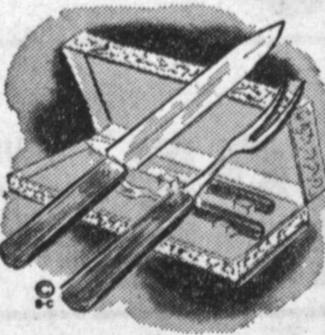
CANDLEWICK  
Add Charm to Your Table on Thanksgiving Day

Candy dish \$2.95

compote \$2



16-piece starter set \$13.90



Carving set from \$3.95



Towel tray from \$1.20



Aluminum ice bucket \$9.95



Salad bowl set complete \$7.95



Cake saver, alum. \$3.79



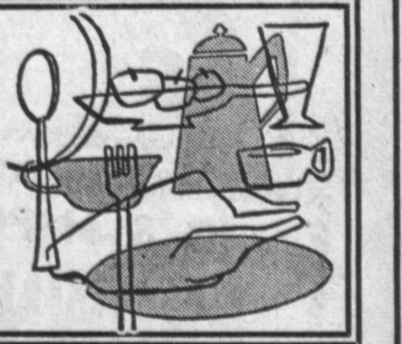
16-piece starter set \$13.90

PLENTY OF FREE PARKING IN THE REAR — S & H GREEN STAMPS



# TORRANCE HARDWARE

1513-15 CABRILLO AVE. CHAS. V. JONES, OWNER TORRANCE



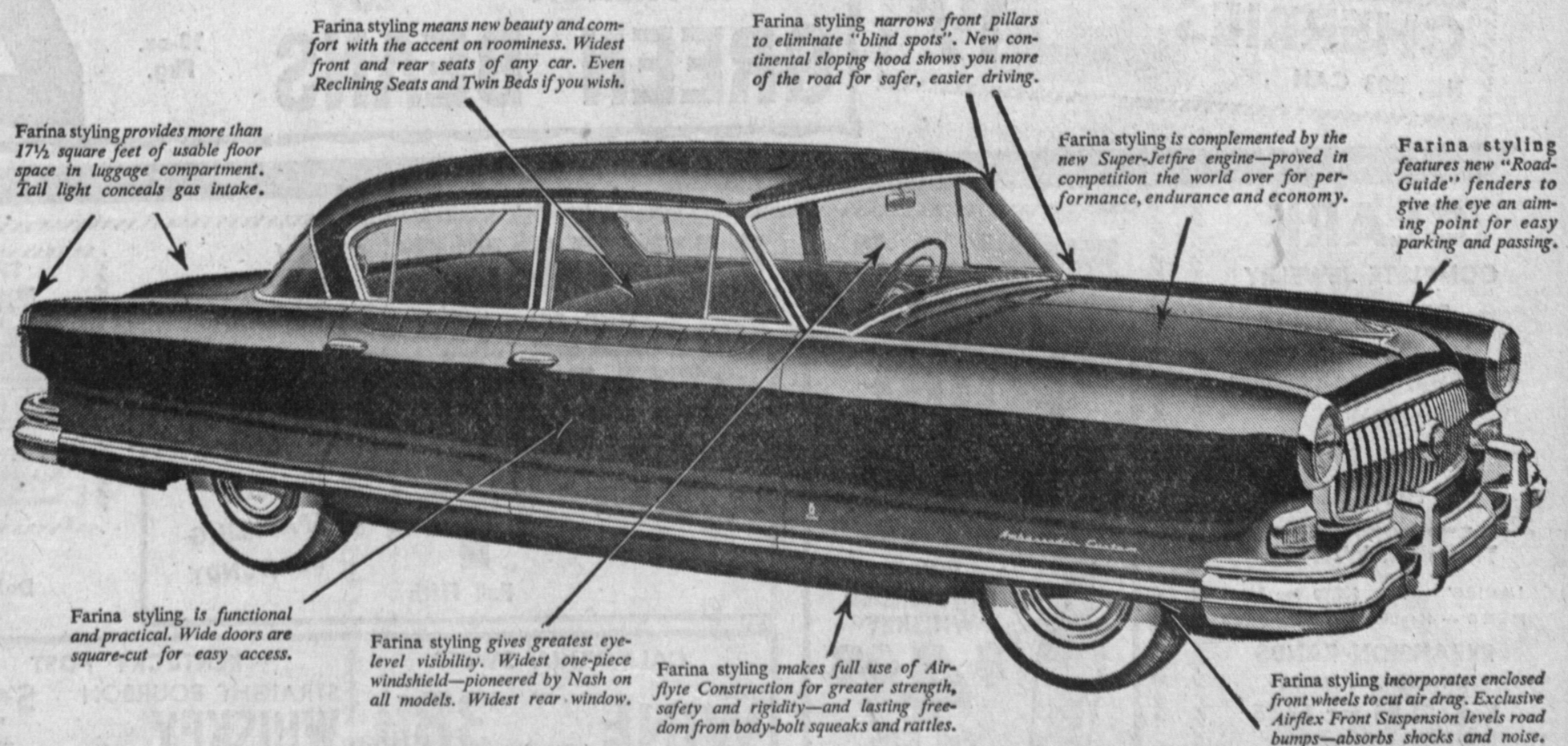
## Today or Tomorrow... You'll Find NONE AS NEW AS Nash!

"Rembrandt of Automobile Design", Pinin Farina is the world's foremost custom car designer. His royal crest appears on only the costliest hand-crafted cars—and on Nash Golden Airflytes.



LOOK OVER the new cars that are being introduced these days. You'll find none as new as the Nash Golden Airflyte. No other cars can offer the ahead-of-the-time continental styling of Pinin Farina. Only in Nash can you find such exclusive features as the Airliner

Reclining Seats, Twin Beds, Weather Eye Conditioned Air System. Yes—compare them all, feature by feature. You'll agree—the distinctive new Nash Airflyte leads the whole world in beauty, performance, economy and comfort—today—tomorrow—and in the future!



Farina styling means new beauty and comfort with the accent on roominess. Widest front and rear seats of any car. Even Reclining Seats and Twin Beds if you wish.

Farina styling narrows front pillars to eliminate "blind spots". New continental sloping hood shows you more of the road for safer, easier driving.

Farina styling provides more than 17½ square feet of usable floor space in luggage compartment. Tail light conceals gas intake.

Farina styling is complemented by the new Super-Jetfire engine—proved in competition the world over for performance, endurance and economy.

Farina styling features new "Road-Guide" fenders to give the eye an aiming point for easy parking and passing.

Farina styling is functional and practical. Wide doors are square-cut for easy access.

Farina styling gives greatest eye-level visibility. Widest one-piece windshield—pioneered by Nash on all models. Widest rear window.

Farina styling makes full use of Airflyte Construction for greater strength, safety and rigidity—and lasting freedom from body-bolt squeaks and rattles.

Farina styling incorporates enclosed front wheels to cut air drag. Exclusive Airflex Front Suspension levels road bumps—absorbs shocks and noise.

SEE AND DRIVE AMERICA'S NEWEST AND SMARTEST CARS AT YOUR NEARBY Nash DEALER TODAY!

# POST AVE. MOTORS

1336 POST AVE. Across from Roth's Mkt. TORRANCE



Nash Motors, Division Nash-Kelvinator Corporation, Detroit, Michigan



## Flowers

### Bring Beauty to your table

Floral decorations for every occasion. Call in person or phone for prompt delivery.



Decorate your Dinner Table for Thanksgiving with a centerpiece of gay flowers. The cost is surprisingly modest. PHONE IN YOUR ORDER, NOW!

## TORRANCE FLOWER SHOP

Phone Torrance 1778, or Come in at 1400 CRAVENS