

TRUMAN BROWNE

CALIFORNIA'S
foremost

COMMUNITY
BUILDER

DESIGNED FOR BETTER LIVING

SEPULVEDA GARDENS

PREMIUM BUILT
RANCHOS
VETS & NON VETS

California's Greatest HOME VALUE

4% G. I. LOANS

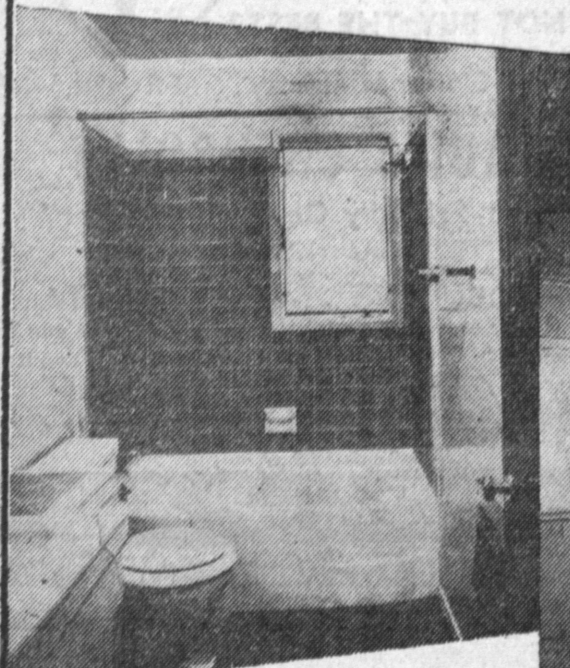
BUILDER OF THOUSANDS OF FINE HOMES AT FAIR PRICES FOR CALIFORNIANS

FEATURING VETERANS

5% Down...

This outstanding Community premium-built Rancho Homes now being offered for the first time to Veterans for the SENSATIONALLY LOW DOWN PAYMENT OF ONLY 5%... Plus Loan Costs... These Deluxe "Rancho" and California Contemporary "Moderns"... From \$10,000 to \$13,000... No Finer Homes in All California... HURRY OUT TODAY. They Won't Last Long...

REASONABLE TERMS FOR NON-VETS



Many 3-Bedroom Homes An Additional Half and 3/4 Bath, Plus Above.



ALL THIS AND MORE TOO!!! IN YOUR KITCHEN...

Your Waste King Pulverator insures garbage free living... Your Dishmaster makes dishwashing a breeze... Your Lifetime Ceramic Tile Sink and Butler's Utility Cabinet... Your Enamel Crane Double Sink... Your generous Breakfast Nook Area... Your Armstrong Inlaid Linoleum... Your extra cabinets... All give you Greater Kitchen Freedom and More Pleasure Than Ever Before...

IN YOUR 3 DELUXE BEDROOMS...

Your Glide-A-Way Full Length Wardrobes provide twice as much Clothes and Storage Space... Your Lifetime Steel Transom Picture Windows Provide More Privacy and Ideal Furniture Arrangements... All Your Bedrooms Beautifully Decorated... Ample Space for Twin Beds...

IN YOUR BATH...

Your Smartly Designed Tile Pullman... Your Lifetime Ceramic Tile—Full Five Feet above Deluxe Cast Iron Crane Enamel Tub... Your Electric Heater for Cool Mornings... Make Your Bath a Delightful Room...

IN YOUR UTILITY ROOM...

Your Generous Floor Area provides for Automatic Washer (ready for installation)... Your Cast Iron Enamel Laundry Tray... Added Storage Convenience... All insure Greater Laundry Comfort...

IN YOUR GARAGE...

Your Full Size 2-Car Garage... Plus 640 Cubic Feet, allows for "Deep Freeze"... "Trunk Storage"... "Mechanic's Bench"... More Space Than You've Ever Hoped For...

IN YOUR YARD...

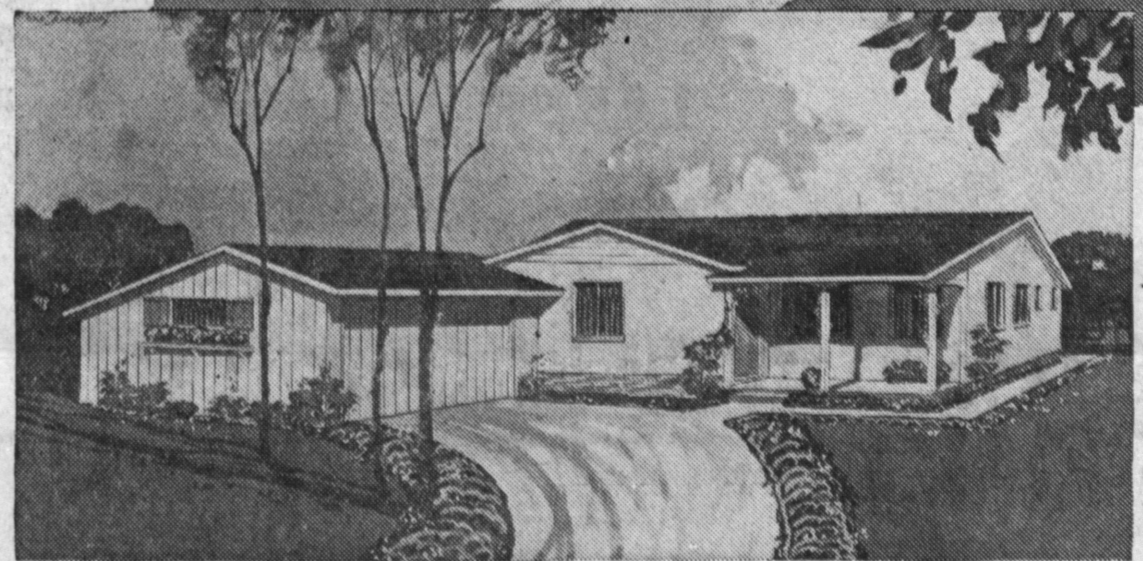
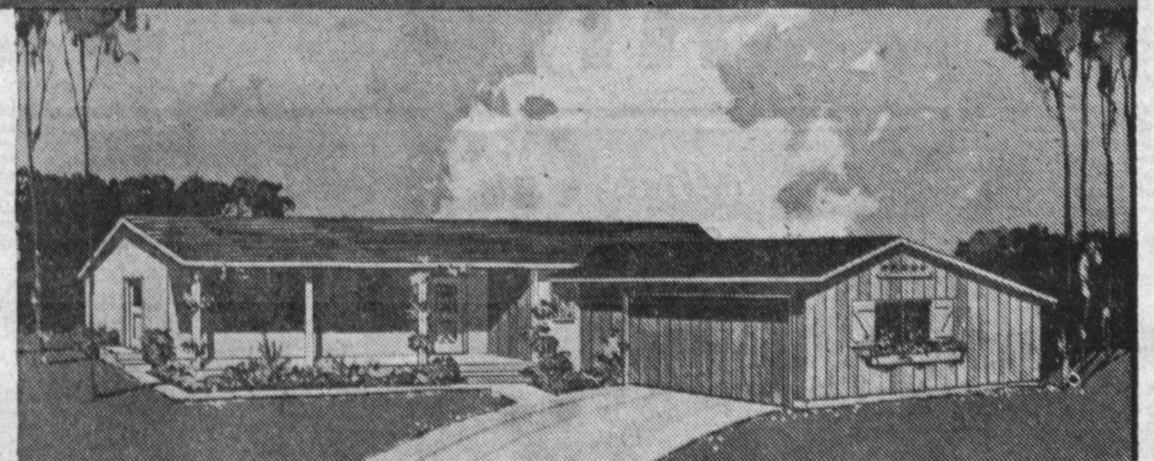
Your Yard Beautifully Landscaped with Grown-up Shrubs... Lifetime Concrete Drives and Walks... Rear Yard equipped with Steel Clothes Line and Incinerator...

IN YOUR HOME—GOOD FOR 50 YEARS...

Your Home Architecturally Planned and Designed... Central Halls... Functional... Added Guest Closets... Rear Yard and Patio Living... Service Porches... Your Home Constructed with W. C. L. A. Douglas Fir Graded Lumber from Hammond... Solid Concrete Foundation Walls Thru-out... Lifetime Weiser Guaranteed Door Locks... Sturdy Chrome and Brass Cabinet Hardware... Number One Hardwood Flooring... Johns-Manville Rock Wool Attic Insulation... Thermostat Control Deluxe Dual Andrews Floor Furnace... TELEVISION OUTLET... Oil Shades Thru-out... AND REMEMBER ALL THESE FEATURES AND ONLY 5% DOWN.

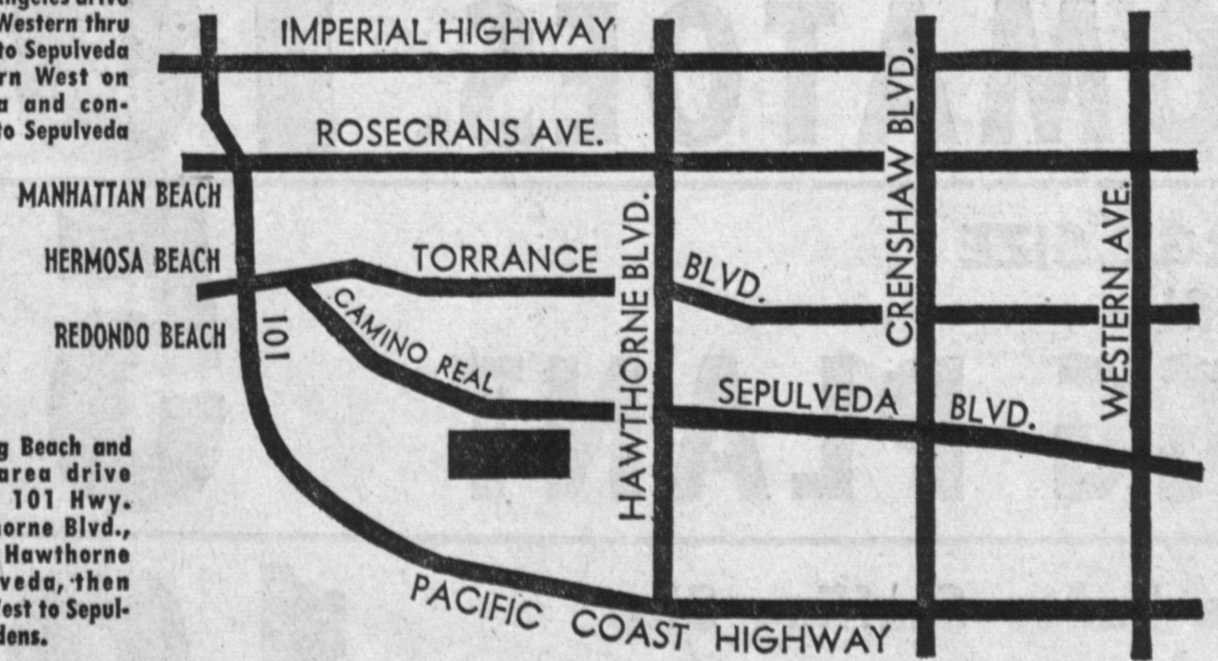
DE LUXE STEEL PICTURE WINDOWS THRU OUT

CLASSICS
RANCHS

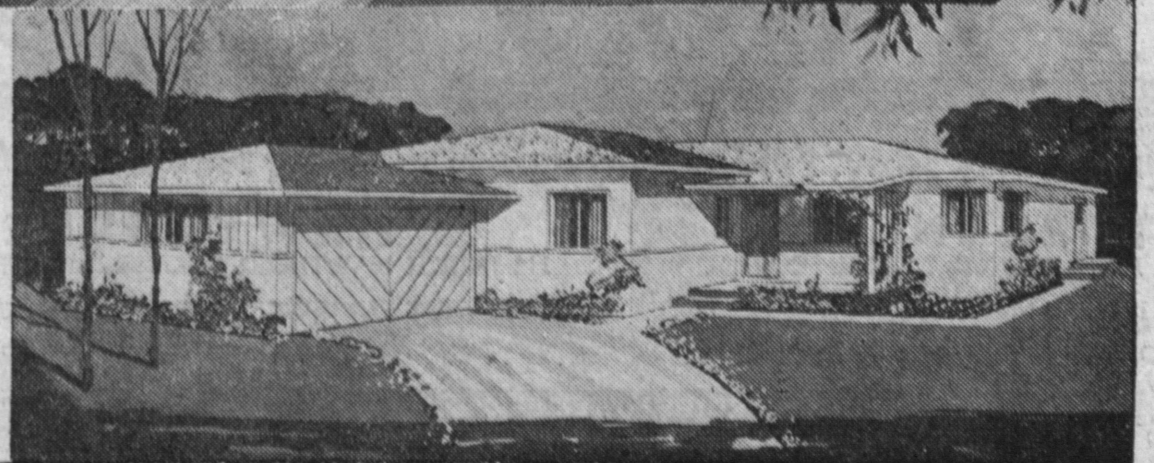
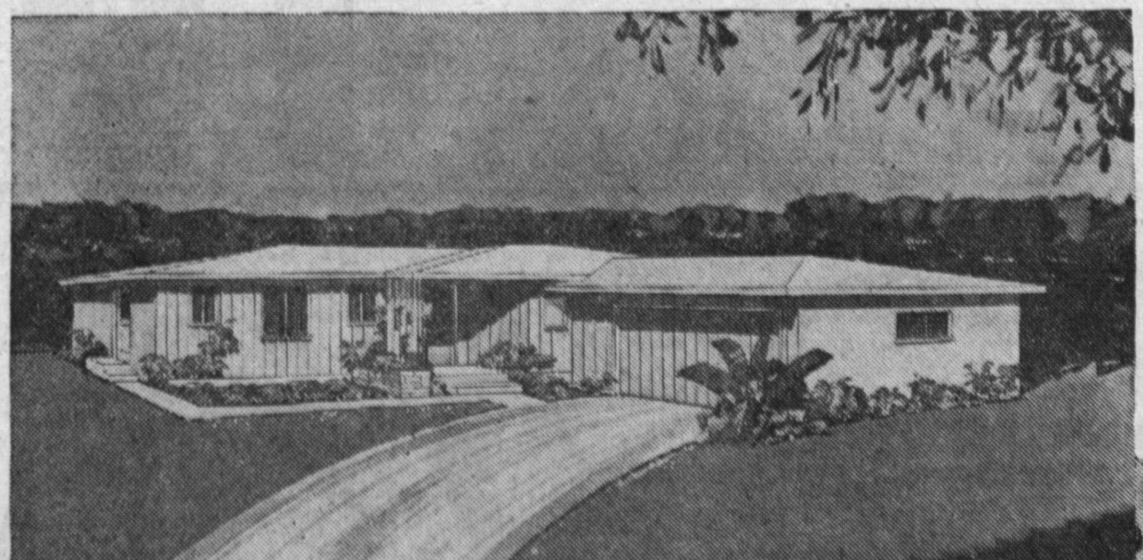


From Los Angeles drive South on Western thru Torrance to Sepulveda Blvd., turn West on Sepulveda and continue on to Sepulveda Gardens.

From Long Beach and Harbor area drive West on 101 Hwy. to Hawthorne Blvd., North on Hawthorne to Sepulveda, then directly West to Sepulveda Gardens.



CLASSICS
MODERNS



EXTRA FEATURE—GLIDE-A-WAY WARDROBES



FORMICA—SNACK BARS, IN MANY UNITS

