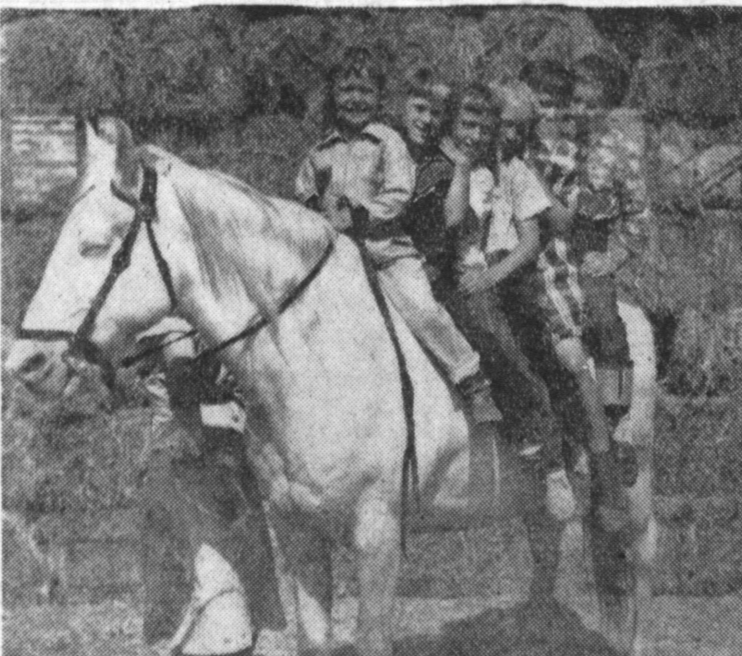


**PROCESSING**—Up-to-the-minute equipment for processing dairy products for market is an essential part of the dairy industry. Shown above is a modern bottle filling machine in operation at the Ben Cluff Dairy. And bringing the milk to the customer requires streamlined merchandising techniques, such as the Ben Cluff Milk Drive-ins. The nation pays tribute this month to dairymen like Ben Cluff. —Press photo.



**DISTRIBUTION**—During the seven years that Ben Cluff has operated his Torrance dairies, the fleet of trucks that distribute Ben Cluff milk has grown right along with the dairy. Currently these clean, modern trucks provide every-other-day delivery service to communities including Torrance, Gardena, Lomita, Wilmington, and Harbor City, to name but a few.



**MILK MEANS HEALTH**—Dairy products are high on the diet of these healthy youngsters—their dad owns a dairy. Ben Cluff proudly claims that he has a thriving dairy and a thriving family. Shown astride their favorite companion, Lucky, are (left to right) Donna Jo, 5, Claudine, 7, Tina and Tarry, 8-year-old twins, Connie, 11, and Benny, 12. Mr. and Mrs. Cluff have one other child 2-month-old Vance Allen.

### Walteria P-TA Has Last Meet This Evening

The last regular meeting of the Walteria P. T. A. will be held this evening, June 5, 1952, at 7:30 p.m. in the school auditorium with Mrs. Glen Hardcastle presiding.

City Recreation Director, will discuss the summer recreation program for the various age groups of children.

The Walteria School elementary orchestra will present musical numbers under the direction of Lloyd Reist.

Mothers from Cletus Nestle's 8th grade room will serve refreshments. Child care will be provided in the Kgn. room.

Frank H. Carpenter, Torrance

**Auditing of Limber Funds**  
Auditing of the the Frank Limber funds has been completed by Auditor W. R. Wright and have been found to be "in perfect order." Limber, of course, is the former Lynwood City Clerk.

## Announcing The Opening ... of ... MIDWAY MARKET

18727 CRENSHAW BLVD. (Near General Petroleum)  
You are invited to visit Torrance's newest neighborhood Market — Featuring Super Market Prices — and friendly, personalized service.  
SAM F. RIKALO - Owners - LOUIS F. TUKICH

**See PEOPLES First!**  
**REAL ESTATE LOANS**  
TO BUY, BUILD or REFINANCE HOMES & INCOME UNITS  
Low Interest, Long Terms, Quick Commitments.  
**PEOPLES FEDERAL SAVINGS AND LOAN ASSOCIATION**  
MARKET at MANCHESTER, INGLEWOOD  
Phone: OR. 7-1145 OR. 8-1259

### Milk Festival NATION HONORS DAIRY INDUSTRY THIS MONTH

National Dairy Month began this week and for those who take their milk and cheese and butter lightly it might be noted that dairying is California's second largest industry — second only to petroleum. During the month of June the entire county will be paying tribute to this giant industry for its all important contribution to the health of our citizens and the economic welfare of our land.

The industry's figures are big. There are about 813,000 milk cows in the State and last year they produced almost 3,000,000,000 quarts of milk, 35,000,000 pounds of butter, 38,500,000 gallons of ice cream and 4,155,000 pounds of cheese.

**CONSUMPTION HIGH**  
Per capita milk production in the State runs some 40% above the national average but Californians are great milk consumers — the per capita consumption in the nation has increased 15% in the last 10 years while in California it has increased 25%. California produces more cottage cheese, sherbet and milk

ated and condensed milk and much of the butter are exported to other States and other countries.

**BIG COW POPULATION**  
If California's milk cows were placed across the nation in single file, the leaders would be nibbling on New York grass before the tail ends left the State. And the milk produced here annually, if placed in quart containers and stacked, would reach to the moon and part way back again.

Los Angeles is the top milk producing county in the nation and is followed by three Wisconsin counties, Dane, Marathon and Dodge, in that order, and by St. Lawrence County, New York. However, Los Angeles County produces some 200,000,000 quarts more a year than its

### PTA Board Ends Year With Pot Luck Luncheon

The 1951-52 board members of the Walteria P-T. A. ended a very successful year at the June board meeting with a pot-luck luncheon at the conclusion of the business meeting.

Mrs. Glen Hardcastle, outgoing president, was presented a gift of appreciation from her board by Mrs. Bruce Howey, president-elect. Mrs. Hardcastle in turn presented each board member a figurine as a token of thanks for the fine cooperation and support throughout the past year.

Procedure books were turned in for the use of new board members to be introduced by Mrs. Howey at the general meeting June 5th, at 7:30 p.m.

### Writing Class Offered at ECC

People who have always wanted to write but "just don't seem to get around to it" may find the necessary stimulation and instruction in a summer session course offered by El Camino college.

A class in creative writing, instructed by Stanley Wilson, has been announced by the college and will be given during the

fruit, ham and eggs, hot biscuits and drink will be followed by a reading of the class prophecy and a program of entertainment.

regular summer session, June 23 to August 4.  
El Camino college is a tuition-free school and anyone may enroll for classes without charge, who is a High School graduate or 18 years of age. No educational prerequisites are required of summer enrollees except in advanced classes.  
The creative writing class is offered in regular sessions and is designed according to Wilson, to furnish the framework for writing original fictional stories for publication.  
Information concerning the creative writing of other classes may be obtained at the college registration office, located in the Administration building, or by phoning Menlo 4-6631 or Plymouth 6-1421.

**Your POULTRY Headquarters**  
"IN THE HEART OF THE BUSINESS DISTRICT"  
**CAPS Poultry**  
Fresh Dressed Daily  
Fancy Red Fryers — Capon Roasters — Hens  
Turkeys — Frying Chicken by the Piece  
Strictly Fresh Grade AA Eggs  
1615 CABRILLO AVE. PHONE TO 3011

**Sunbeam SHAVEMASTER**  
CLOSER, CLEANER SHAVES IN LESS TIME THAN SOAP-&-BLADE

• It shaves **CLOSER**

• It shaves **FASTER**

• It shaves **SMOOTHER** with greater COMFORT and CONVENIENCE

**SKIP A SHAVE... VISIT OUR STORE AND FIND OUT FOR YOURSELF**

(LOTS OF FREE PARKING DIRECTLY BEHIND OUR STORE)

# TORRANCE HARDWARE

CHAS. V. JONES, Owner  
WE GIVE S & H GREEN STAMPS  
1513-15 CABRILLO AVE. PH. TORRANCE 1480

*It's all new!*

# CYCLA-MATIC FRIGIDAIRE

**NO DOWN PAYMENT \$399<sup>75</sup>**

Here's the Refrigerator with Cycla-matic Defrosting and "Roll-to-You" Shelves

New Cycla-matic Defrosting gets rid of frost before it collects! No counters, switches, clocks, or heating devices! It's continuous and completely automatic! No dripping moisture! It's the simplest defrosting method known!

Yes, every shelf in the Cycla-matic Frigidaire rolls out full length — so that all foods, even those at the back, are at your finger tips, with table-top convenience.

Also See the new De Luxe Master \$199<sup>75</sup> and Standard Models Priced From

## STAR Furniture Co.

LOWEST TERMS IN TOWN

Sartori & Post Ave. Phone Torrance 625 We Carry Our Own Contracts