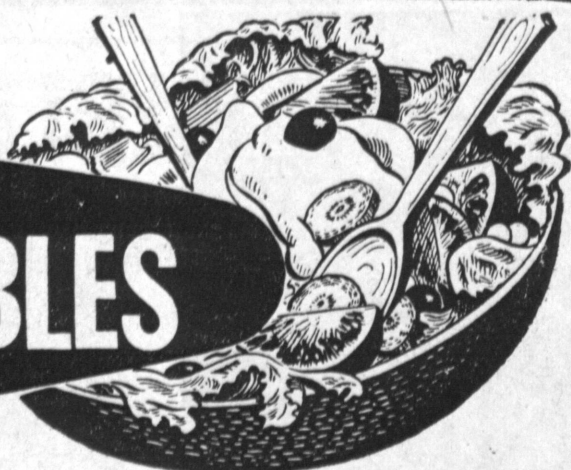


ROTHS LOWER PRICES ROTH'S LOWER PRICES ROTH'S LOWER PRICES ROTH'S LOWER PRICES

it's salad time!

FRESH FRUITS & VEGETABLES



A REAL VALUE SWEET JUICY ORANGES 10 29

CABBAGE SOLID GREEN 4

JUMBO SIZE FUERTE AVOCADOS 2 FOR 25

NEW CROP WHITE ONIONS 10

MEATS

SUGAR CURED PORK TENDER SMOKED 47

MEAT Boil with Sauerkraut 10

MEAT 1-POUND CARTON 15

MEAT BY THE PIECE 25

MEAT 19

DOODLE DANDY HOT MIX...Quart Jar 39c
DOODLE DANDY PLAIN DILLS...Quart Jar 39c
DOODLE DANDY KOSHER DILLS...Qt. Jar 39c
HALEY'S CHICKEN SPREAD, 3 1/2-oz. 10c

ANDERSON'S Split Pea Soup PT. 23

LEA'S WAFFLES Pkg. of 6 15

LIBBY'S Pineapple Chunks 12 OZ. 23

GOLDEN CREME

White or Wheat

BREAD

LARGE LOAF 20



THURSDAY, FRIDAY, SATURDAY, MAY 15TH, 16TH, 17TH AND 18TH

WANTHORNE
1231 POST AVENUE
5521 SOUTH BROADWAY, LOS ANGELES
310 EAST MANCHESTER, LOS ANGELES
8240 EAST FIRESTONE, DOWNEY

TORRANCE
1231 POST AVENUE
5521 SOUTH BROADWAY, LOS ANGELES
310 EAST MANCHESTER, LOS ANGELES
8240 EAST FIRESTONE, DOWNEY

PRICES EFFECTIVE THURS.-FRI.-SAT. AND SUNDAY MAY 15-16-17-18

ROTHS LOWER PRICES ROTH'S LOWER PRICES ROTH'S LOWER PRICES ROTH'S LOWER PRICES ROTH'S LOWER PRICES

ROTHS LOWER PRICES ROTH'S LOWER PRICES ROTH'S LOWER PRICES ROTH'S LOWER PRICES ROTH'S LOWER PRICES



HERB GLIECKE

NEW PAINT FACTORY OPEN

Another new business has been added this week to the fast growing Torrance Trading area, with the opening of the Mor-Glo Paint factory. Located at 18937 S. Main St., between Carson St. and 190th St. (Victoria) the newly opened concern will produce not only for the United States Government and other wholesale outlets, but will make their products available to the public, according to Herb Gleicke, owner.

Judge O. Willett Assigned Post in Municipal Court

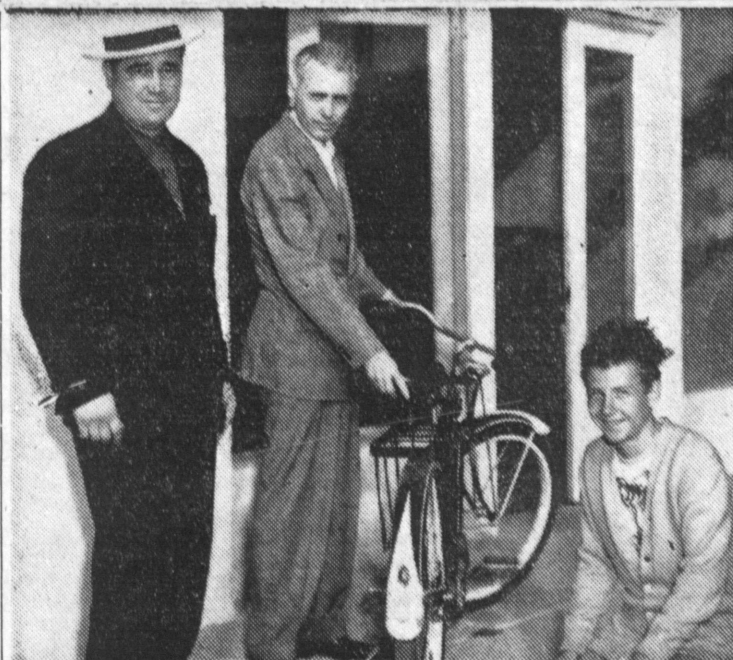
The assignment of Judge Otto B. Willett, candidate for Office No. 2, South Bay Municipal Court in the June 3 election, to sit as visiting judge of Inglewood Municipal Court has just been announced. Judge Willett, who has a long record of Municipal Court service, was appointed to replace Judge Lester O. Luce, for the month starting June 20, 1952. He will work with Presiding Judge Frank D. Parent in handling the heavy business of the Inglewood Municipal Court. The appointment to sit on the bench of the Inglewood court came from the office of Chief Justice Phil D. Gibson, of the State Supreme Court, who is chairman of the State Judicial Council.

Judge Willett has served the City of Torrance in a judicial capacity for the past 10 years. Upon assignment of the Chief Justice of the Supreme Court, he served as a judge of the Long Beach Municipal Court for 27 months during the years 1948, 1949 and 1950. He sat as visiting judge in the Gardena, Centinella, and South Los Angeles Justice Courts during 1951, in addition to his regular duties as Judge of Torrance City Court. He just completed a three months assignment to the Los Angeles Municipal Court, sitting in Division 11. Judge Willett has presided in recent years in the City Courts of Manhattan Beach, Hermosa Beach, Gardena, Hawthorne, Lynwood and Compton. A graduate of the University of Illinois and of the University of Southern California College of Law, Judge Willett has been practicing law for 16 years. Forty years of age, he resides with Mrs. Willett and their two sons in the Hollywood Riviera section of Torrance. He is a believer in bringing the courts to the people, and stated in a recent talk to a group of citizens of the South

Judge Bridge Cites Record

Judge Collamer A. Bridge will seek election to the office of No. 2 on a basis of his qualifications and record of legal service in the South Bay District area. Judge Bridge has served as the Hermosa City Judge for some twenty-four years.

In addition to his experience as City Judge in Hermosa, Judge Bridge has also served over a period of years as a visiting Municipal Judge in most of the cities of the South Bay area, including Manhattan Beach, Gardena, Redondo Beach, Inglewood, Torrance, Hawthorne and Palos Verdes. Judge Bridge has also served as a visiting jurist in the Los Angeles Municipal Court for a period of two years. Judge Bridge served as Hermosa City Judge from Los Angeles in 1920. Judge Bridge is a native son of California, born in Riverside County, secured his law degree from the University of Southern California, and has been a successful practicing attorney in the State of California since City Attorney for a period of four years after moving to Torrance in 1948.



Councilman Nick Drale (left) and Pat Brunker (center) representing locals 1414 and 2586 of United Steel Workers are shown with Don McCue (right) after they have attached a "Scotchlite" safety sticker to Don's bicycle. The two locals in the city wide bicycle safety campaign will affix the fluorescent warning lights to bicycles throughout the city.

Union Sponsors Bicycle Safety Program Here

In a drive to promote better safety habits among young bicycle riders, Local 1414 and 2586 of the United Steel Workers of America, CIO, are distributing small fluorescent stickers for attachment to the two-wheel vehicles.

Beginning very shortly representatives of the locals will visit each elementary school in Torrance and affix the bright warning reflectors to the bicycles. Bob Wilson and Pat Brunker of Local 2586, and H. H. Cook and Councilman Nick Drale of Local 1414, are spearheading the safety campaign.

Wilson stated that the exact dates of the visits to each school will be announced next week. He urged all parents to assist in the program of educating bicyclists to practice better safety habits.

Midland Men to Play Softball

Members of the Los Angeles Rams Football team will be out of their own field next Tuesday night when they meet employees of Midland Rubber Co. at Torrance Park for a game of soft-ball. The game will begin at 8:00.

Sparking the team for the local firm will be Jerry Jackson, former professional first baseman. Glenn Davis and Fred Gerhke head the Ram line-up.

Proceeds from the game will be donated to the Torrance YMCA, according to J. Rowlin, personnel director of Midland Rubber.

Every vegetable of commercial importance in the north temperate zone, except celery, thrives in the Lower Rio Grande Valley of Texas.

School List

(Continued from Page 4)
Marylyn Carnahan, Sheehan, Lovina Valle, Verdell, Jean Little, Wolla, Joanne Witte.

EL NIDO SCHOOL—Magner, Wallace Bruce, Jr., principal; Evans, Robert Donald, Friel, Marie Stanley, Hebert, D. Pearl, Miller, Vinita Ar, Reynolds, Wanda Ryan.

CRENSHAW SCHOOL—Magner, Wallace Bruce, Jr., principal; Buehler, Lura V. Abshire, Hardenbrook, Helen Bradford, Lawson, Marilyn Lou, Lillesve, Hector C. Mertens, Geraldine Dolores, Morehart, Kathryn Foote, Schindele, Joyce Ferris, Wieman, Helen Adams.

DISTRICT—Anderson, Merlyn Xarria, Brown, Laura Sabro, Burbage, Gertrude Elliott, Caldwell, Violette Nygren, Chapman, Edna Edith, Davidson, Jennings R., Ditton, Carolyn Hull, Flis, David Henry (Dr.), Hamilton, Warren Wilson, Lewis, Ethel N., Manshaw, Donald Gerard, Markham, Henry Veazie (Dr.), Marrs, Flora A., Melbo, Irving R. (Dr.), Posner, Albert N., Rehboldt, Walter, Reist, Lloyd Arthur, Tate, Dorothy Posey.

The fortress of Sacasahuaman in Peru, which is still standing was built by the Inca Indians to guard Cusco, the leading city of the Inca realm. It was begun in 1438 and completed in 1508.

WINDOW SHADES

Made to Order
Bring in Your Old Roller and Save 20c
Distributors of
TREASURE TONE PAINT
JOHN'S PAINT & SHADE
1311 Post Ave.—Tor. 3096
(Next to Roth's Mkt.)

Dine at Mom's and Don's for delicious original wood cooked Barbecue meats.

Hickory Sweet



HAM - BEEF - PORK
DINNERS \$1.25
Includes green salad, french fries or barbecue beans and rolls.
—ALSO SPARE RIB DINNERS—
—BAR-B-Q TO TAKE OUT—

MOM'S & DON'S

Open Sundays — Lots of Free Parking
SARTORI & POST AVE. Katty Corner from Torrance Blvd.

AUTHORIZED

NEW CAR DEALERS SALES and SERVICE

HOHMAN & HADENFELDT, Inc

Your Nearest Pontiac Dealer
**WHY PAY MORE?
WHY TAKE LESS?
WHY NOT BUY THE BEST?**
505 Pacific Coast Highway Frontier 4-8987



PAUL'S CHEVROLET

"Your Friendly Chevrolet Dealer"

IN TORRANCE IN LOMITA
1640 Cabrillo Ave. Corner Narbonne and Pacific
Torrance 617 Coast Hwy LO 3046

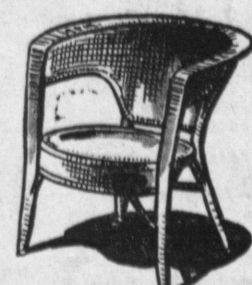
FOR NEW OR USED CARS — SERVICE OR REPAIRS
YOUR DEPENDABLE NEW CAR DEALER
GUARANTEES SATISFACTION ALWAYS

WEEK-END SPECIALS!



BARBEQUE SET . .

Knotty redwood set complete with two benches . . . weather resistant. **\$19.95**



Garden CHAIR

A real buy for those summer hours of outdoor living. **\$5.95**

"HEADQUARTERS FOR OUTDOOR FURNITURE"
BURKE'S BARGAIN SPOT

Torrance Blvd. & Cravens Ave. — Ph. Torrance 1726

Don't Miss This

REDWOOD OIL, Per Gallon 1.75
SCREEN DOORS EACH 7.15
Decorative Panels 4x8 ft. 18c ft.

JOSLIN LUMBER CO.

1782 W. Carson St. Phone 475
Open All Day Saturday and 'til Noon Sunday
For Your Convenience

ROTHS LOWER PRICES ROTH'S LOWER PRICES ROTH'S LOWER PRICES ROTH'S LOWER PRICES ROTH'S LOWER PRICES