

Students Elect Officers Today

Voting booths on the campus of Torrance High School will be open today, as the students take advantage of the democratic principle of election of their representatives.

The student body heard the campaign speeches of candidates for the various offices last Monday at the nominations assembly. Installation of winning electioneers is scheduled for January 22.

Candidates in the running for the student body offices are: President - Edgar Forcier, G. G. Johnson, and Bill Gray; Vice President - Fanny Baker and Richard Uglad; Commissioner of Records - Betsy Shaw, Dayle Denham, and Charlette Anderson; Commissioner of Finance - Martha Gruver and Pat Garrison; Commissioner of Athletics - Bob Kulp and Dan Mayes; Girls League President - Nancy Ruth Miller and Jo Anne Bernard; Girls Court Judge - Jane Fisher and Ann Bishop; Boys Court Judge - David Scholl and Beryl Jones; Commissioner of Publicity - Marian McDonald; Commissioner of Group Control - Orland Mattie, Beverly Rodgers and Joan Stephens; Commissioner of Entertainment - Charlene Grace and Ellen Koehn; and Commissioner of Activities - Betty Peterson and Janet Williams.



J. "PADDY" RYAN

Carson Will Be Group's Name

KEYSTONE—The Keystone-Avalon Chamber of Commerce in close balloting, voted last night to change the name of the civic organization to the Carson Chamber of Commerce.

Voting of the name change was the main item of business on the agenda of the monthly meeting of the group, according to Henry Blythe, president.

Blythe said the chamber of commerce is planning to write to Rep. Cecil R. King to ask him to reserve the name of Carson for the community in preparation for the establishment of a post office in the area.

King recently reported to the group that the Post Office Department is readying plans to open a postal station here which would be a branch of the Wilmington Post Office. At a later date, a full-planned post office would be established.

Lomita Starts Chamber Drive

Ross to Exhibit 20 Oil Paintings

An exhibition of 20 conservative oil paintings by L. E. Ross of Lomita began Monday in the lecture room of the Torrance Public Library. It will be open during regular library hours through the end of next week.

The exhibit includes landscapes and marines painted in the Santa Lucia mountain region between San Luis Obispo and Monterey, together with outstanding features of the western mountain region of Colorado, as well as a few pictures of boats. L. E. Ross was one of the early members of the Laguna Art Association and studied there with Anna Hills and Guy Rose. He is at present treasurer of the San Pedro Art Association and is a member of the county wide Southland Art Association. Ross has lived in Lomita, at 25022 Pennsylvania, since 1946 and has had two previous exhibits at the Torrance Library as well as en-

twice, while Huffine was shot once in the abdomen. Both remained on the critical list for more than a week after the shooting.

Members of the chamber of commerce include L. J. Mac Arthur, new president of the chamber of commerce. He will head the membership committee himself, it was announced today.

Last year the chamber passed the 100 mark for the first time, with a peak membership of 101, it was reported. Working with the president are C. E. Hopkins, John Woodman and James Schmidt.

tries in the Torrance art, flower, and hobby show for the past two years.

Realtors Install New Officers at Dinner Meeting

Installation of C. J. "Paddy" Ryan as president of the Torrance-Lomita Realty Board, took place at a dinner held at the Christian Church, Tuesday evening.

Other officers installed were Gerald "Jerry" Alter, vice-president and Perry Connett, treasurer.

The new board of directors is composed of Jerry Alter, Harry Bowker, Perry Connett, Jim Decker, Gretchen Earle, Elmer Epperson, Howard Percy, Paddy Ryan, and Edith Smith.



PERRY CONNETT

Thespians Plan Show for Aud.

Torrance High School's 1952 All-Student Varsity Show is going to be on the boards three nights next week, January 23rd, 24th, and 25th. The curtain will go up at 8:30, and won't ring down until the laughter-exhausted audience stops applauding.

Tickets are on sale now, with general admission seats priced at 50 cents. Reserved seats are going for 75 cents, and students are paying a mere 35. All children under 12 will be admitted free of charge.

The program will be under the student direction of Torrance High School, Dwight Hanna.



GERALD "JERRY" ALTER

ARMY REQUESTS USE OF AIRPORT BUILDING

Scenes of World War II seemed to be returning to Torrance this week, as the Third Corps of the Sixth Army requested permission to take over one of the buildings at the Torrance Municipal Airport.

In the Council meeting Tuesday, City Manager George Stevens pointed out that actually the Army could take it over without paying a cent since there is an agreement between the city and the U. S. government that the airport must be returned under certain conditions.

"However, the Army is trying to be fair about it," said Stevens. "They have offered to pay a maintenance fee to cover costs." Stevens explained for this maintenance fee, airport manager Ed Dietrich has agreed to

pay lights and other minor incidentals on the hangar which the Army occupies.

"We're happy to have the Army with us," said Stevens. "It lends a lot of prestige to the airport. They buy some gas and oil."

Stevens also told the Council that the Army group will bring in temporary landing lights. He said that most of the planes used by the Third Corps are liaison planes. He admitted that once in awhile they did land a DC3.

"However, they never bring in anything larger," Stevens said. Mankind never loses any good thing, physical, intellectual, or moral, till it finds a better and then the loss is a gain. No steps backward is the rule of human

New Models Offer Many Improvements

A brilliant array of smart, new colors, a richness in passenger compartments never before achieved in the low-price field, an easier ride and easier power response headline an impressive list of advances in the 1952 Chevrolets.

Distinguished in styling and performance, the new Chevrolets meet in every respect the exacting standards that have won the company its dominating position in the automobile industry. In 1951 Chevrolet sold more cars than any other make for the twelfth consecutive peacetime year.

Specifically, the new models on display Saturday, Jan. 19th at Paul's Chevrolet, 1640 Cabrillo Ave., Torrance.

Greater comfort through radically re-engineered power mounts and a re-design of shock absorbers.

Improved performance under extreme operating conditions through refinements in carburetion.

A wide variety of solid and two-tone color exteriors combined with harmonizing interior fabrics that give the customer an amazing 129 choices when he buys a Chevrolet.

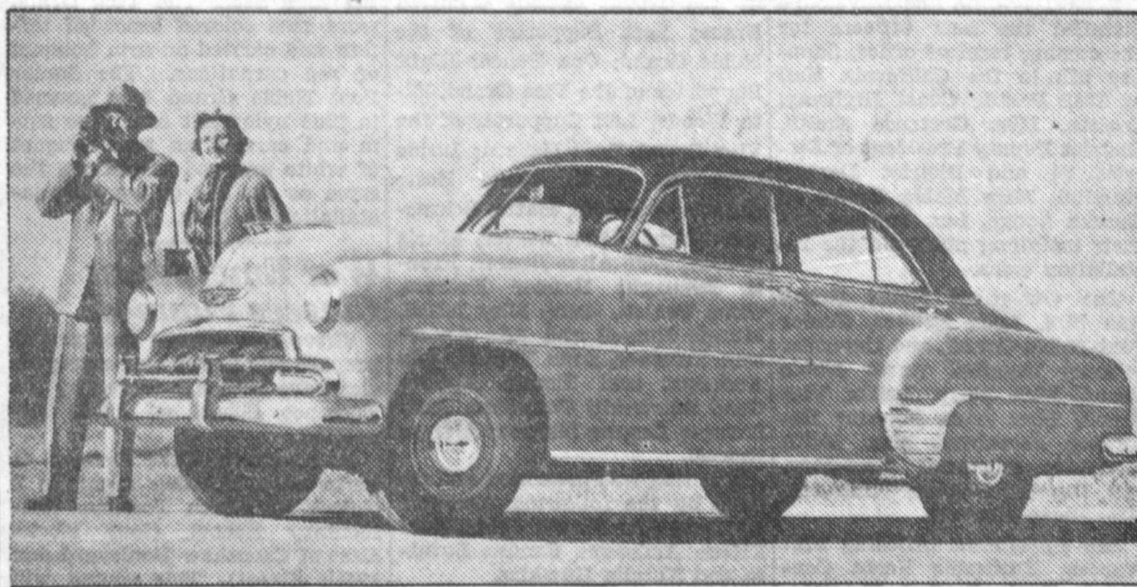
The models to be shown here are representative of eleven body types comprising the Chevrolet passenger car line for 1952. Again this year, the company will produce two series, the Special and De Luxe. Ranging from the ultra-practical business coupe to the swank Bel Air, the line affords an unusually complete assortment in bodies, appointments and accessories.

NEW STYLING

Chevrolet announces its body colors "the most varied ever offered in the low-price automotive field." As an example of the range, exterior options include Onyx Black, Birch and Dusk Gray, Emerald and Spring Green, Admiral and Twilight Blue, Sahara, Beige, Regal Maroon, Honey Dew, Beach White, Bittersweet and Cherry Red.

Convertible as well benefit by the new "Royal Tone Styling." Ten colors will be available, including Honey Dew, Saddle Brown and the strikingly new Cherry. Top fabric options have been increased to five—black,

Smoother Ride, Vivid Colors Feature Four-Door



CHEVROLET RECORDS indicate the four-door Styleline DeLuxe sedan was the most popular body model in the country in 1951. Above, it is shown in its 1952 design, more striking in appearance and improved in performance over earlier models. Headlining some notable

contributions to motoring pleasure are smoother riding qualities and responsive performance under all sorts of weather conditions. The new 1952 Chevrolet is on display locally at Paul's Chevrolet, 1640 Cabrillo avenue.

Shidler Continues Peerson Preliminary Court Hearing

LOMITA—Preliminary hearing on dual assault with a deadly weapon charges against Fry B. Peerson, 44, motel keeper, has been continued until Feb. 13 because his two alleged victims are still hospitalized. Judge John A. Shidler, of South Bay Municipal Court, continued the case Tuesday morning when Peerson appeared before him.

Peerson's estranged wife, Mrs. Norma Peerson, 38, and Cecil Huffine, 38, are still in Harbor General Hospital. The shooting occurred Jan. 3 at a motel at 2472 W. Pacific Coast Highway.

Attendants at Harbor General Hospital report both shooting victims are recovering, but are still unable to leave the hospital.

Mrs. Peerson was wounded equipment on De Luxe models. The performance of the Powerglide models will be even further enhanced by automatically controlling the carburetor choke in accordance with engine load and weather conditions.

'50 BUICK
SPECIAL 46 Deluxe Sedan. 2 Dr. Dyna., radio & heater. Only 13,800 miles on this. LIKE NEW
OPS Ceiling Price \$1994.00
OUR PRICE \$1895.00
DICK BARTON
CHRYSLER-PLYMOUTH
Direct Dealer
1885 Torrance Blvd. Tor. 606
Torrance

POWERHOUSE HAND SAW

Portable SPECIAL INTRODUCTORY PRICE

Sturdy Professional Type - Precision Made FOR HOME - FOR SHOP - FOR FARM

ALL METAL CARRYING CASE IS INCLUDED

The completely portable saw you can use anywhere—indoors or outdoors. Cut hardwood or soft wood up to a full 2" thick. Saves time, effort and money!

UL U. L. APPROVED Approved Cord INCLUDED

SAVE You'd expect to pay \$65 or \$75 for a quality saw like this. But our special price is in effect for a limited time to introduce this model—and we include the all metal carrying case at no extra cost while they last. But you must act NOW. So come in, phone, or write today!

SAWS ALL SIZES WOOD. WALL BOARD, PLASTICS.

CARRYING CASE IS INCLUDED NO EXTRA CHARGE

CONVENIENTLY LOCATED ON THE CORNER OF EL PRADO & SARTORI AVE. IN TORRANCE PHONE TOR. 2811

McMahan's FOR GREATER VALUE!

When clothes are drying... Nice and clean Why does the weather get so mean?

Never mind... Look what we've got for you...

SUNSHINE IN A BOX

Fair weather at your fingertips

IT'S THE NEW **BENDIX** AUTOMATIC DRYER

Clothes dry softer, fluffier than they ever did in the sun. And you've got the right drying weather when and where you want it!

- ✓ Fluff-drys clothes soft and sweet—at the twist of a dial
- ✓ Banishes clothes lines and clothes pins!
- ✓ Dries damp for ironing—or bone dry for storage!
- ✓ Takes a big 9-pound load at one time!
- ✓ Both Gas and Electric Models!

ONLY **\$249.95** (ELECTRIC MODEL)

SEE THE COMPLETE BENDIX LINE TODAY

McMahan's FURNITURE STORES

1306 SARTORI AVE. ...TORRANCE 2811