

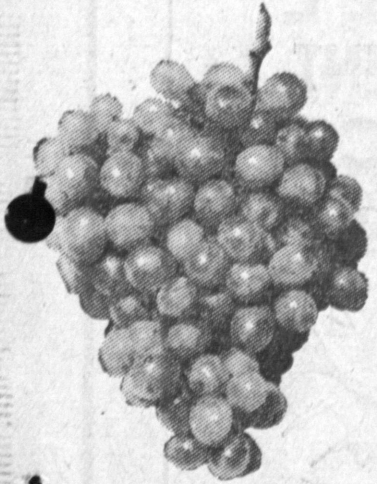
# BARY SALE

Thousands of Our Loyal Customers With the  
**Food Bargains**

IN  
 OUR  
 HISTORY

We Gladly  
 Cash  
 Pay Checks  
 Plenty of Free  
 Parking  
Limit Rights Reserved

ROTHS FARM FRESH PRODUCE DEPT. SENSATIONAL VALUE



NEW CROP . . . FULL BUNCHES

**SEEDLESS  
 GRAPES**

**6**<sup>1/2</sup>  
 Pound

NONE SOLD  
 TO DEALERS

EXTRA FANCY

Utah Type  
**Celery**

**3**<sup>c</sup>  
 lb.

U. S. NO. 1 FANCY

Spanish  
**Onions**

**4**<sup>c</sup>  
 lb.

ROTH'S SELF SERVICE DELICATESSEN DEPARTMENT

FINE QUALITY  
 LARGE

**Bologna** **35**<sup>c</sup>  
 lb.

CREAMY FRESH  
 MONTEREY

**Jack Cheese** **45**<sup>c</sup>  
 lb.

Sugar & Spice  
 Hot dawg relish

**29**<sup>c</sup>  
 Each

FOODCRAFT

**KOSHER  
 PICKLES** **29**<sup>c</sup>

LARGE JARS

BORDEN'S

**CREAM  
 CHEESE** **13**<sup>c</sup>  
3-oz. Pkg.

FRESH MADE

**Potato Salad** **29**<sup>c</sup>  
 lb.

FRESH MADE

**Macaroni Salad** **29**<sup>c</sup>  
 lb.

ALL MEAT  
 KOSHER STYLE

**SALAMI** **49**<sup>c</sup>  
 lb.

PABST-ETT

STANDARD OR PIMENTO

**Cheese Spreads** **23**<sup>c</sup>  
 PACKAGE

JUMBO SIZE NAYBALL

**AVACADOS**

From Calavo

**19**<sup>c</sup>  
 Each

GRAVENSTEIN

**APPLES**

New Crop

**3**  
 Lbs.

**25**<sup>c</sup>

ROTHS FINE MEAT DEPARTMENT

FRESH DRESSED

**FRYING  
 RABBITS** **59**<sup>c</sup>  
 lb.

ALL WHITE MEAT

HORMEL'S EASTERN

**SPARE  
 RIBS**

**39**<sup>c</sup>  
 lb.

**CHUCK  
 ROAST** **68**<sup>c</sup>  
 lb.

**PORK  
 CHOPS** **49**<sup>c</sup>  
 lb.

**RIB  
 PORK  
 CHOPS** **69**<sup>c</sup>  
 lb.

FRESH DRESSED

**ROASTING  
 RABBITS** **39**<sup>c</sup>  
 lb.

KANSAS CITY PORK LOIN

**ROAST**  
**49**<sup>c</sup>  
 lb.



BLADE END

FISH SPECIALS

FRESH FILLET

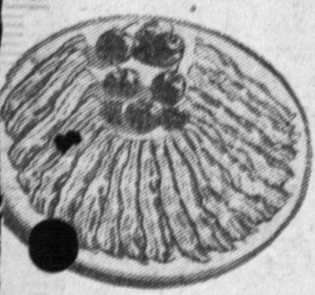
**SEA  
 BASS** **59**<sup>c</sup>  
 lb.

FRESH FILLET

**ROCK  
 FISH** **49**<sup>c</sup>  
 lb.

FRESH FILLET

**WHITE  
 FISH** **59**<sup>c</sup>  
 lb.



SLICED BACON  
 A Daily Package of Energy Food

RATH'S SUNVALE

**BACON  
 SLICED** **37**<sup>c</sup>  
 lb.

MILD CURED

ROTH'S FROZEN FOOD DEPT.

FROZEN

**Strawberries**  
 12-oz. Pkg. **25**<sup>c</sup>

**Chicken  
 PIES**

CHANTICLEER

7-oz. Pkg. **23**<sup>c</sup>

**COD  
 FILLETS**

BIRDSEYE

16-oz. Pkg. **39**<sup>c</sup>

CAL FRAME

**Orange Juice** **15**<sup>c</sup>  
 6-oz. Car.

CINDERELLA

Lb.

**Cheesecake** **39**<sup>c</sup>

ROTHS LIQUOR DEPT.



Marca Petri Vino  
 Rosso Pastoso

Fifth **55**<sup>c</sup> 1/2-Gal **99**<sup>c</sup>

NEW  
 LOW  
 PRICE!

ROMA ESTATE  
 SWEET

**WINE** **58**<sup>c</sup>  
 Full Fifth

**Old Terminal**

BLENDED  
 STRAIGHT  
 WHISKEY

**\$2.98**

**Schmidts City Club**

EASTERN  
 BEER

**29**<sup>c</sup>

**Club House Dry Gin**

Full  
 Fifth

**\$2.49**

**Regina Chianti Wine**

Full  
 Fifth

**72**<sup>c</sup>

**Welch's Grape Wine**

Full  
 Fifth

**\$1.06**

FRI. SAT. SUN. AUG. 2-3-4-5--PLENTY OF FREE PARKING

