

Easter Sunrise Service to Be At Green Hills Memorial Park

Sunrise Easter services will be held by the Green Hills Memorial Park in the scenic hills overlooking the ocean this Sunday morning at 5:45 a.m. The Park is located at 27501 South Western Avenue, San Pedro, one mile south of 101 Highway.

The Easter message will be given by Rev. Jack McArthur of the Baptist Church in Hollywood with Miss Virginia Hewitt, television artist, presenting the scripture story. It will be taken from St. John 20: 1-31.

Rev. T. S. Schuer of the Central Evangelical Church of Torrance will give the benediction. The remainder of the program includes The Morning Prayer by Rev. Percy J. Ferguson of the First Christian Church; Call to Worship by Rev. Herb Ezell, of the Assembly of God Church, Wilmington; Invocation Prayer by Rev. John W. Letson, of the Free Methodist Church.

The First Presbyterian Church Choir, directed by Miss Hazel Newman, will present many Easter selections. Miss Dorothy Secoy will be at the Hammond Organ.

Program chairman for the services is Rev. Ray Nelson of the First Baptist Church in San Pedro.

Two Services At Presbyterian Church for Easter

Rev. Eldon Durham announced this week that there will be two morning services at the Lomita Presbyterian on Easter Sunday.

In addition to the regular service at 11 a. m. an early service will be held at 9:30. The choir will sing special Easter music at both of these services. Rev. Durham will preach on the subject, "What Is Man Without a Spirit?"

The Westminster Choir will sing at the evening service at 7:30 p. m. and Rev. Durham will speak on "Some Practical Questions Regarding Immortality."

Children to Give Easter Program at Nazarene Church

Holy Week services, at the Nazarene church, 1501 West Carson, consisted of a Communion service, Wednesday, March 21, 7:30 p.m., for the benefit of the working people of our community and church.

On Easter Sunday morning, 9:45, the children of the Sunday school will present their Easter program. The message for the 11 o'clock worship hour will be on the theme of the Risen Christ.

News From Court St. Catherine

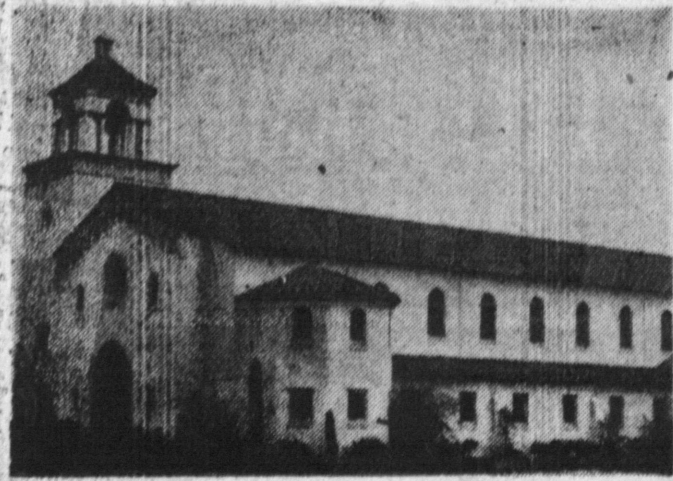
Mrs. William Bougumill of Court Compton and State Chairman of Conferment was the guest speaker of Court St. Catherine and spoke after the March business session. Hostesses were Mesdames T. C. Turner, Howard Schott, Teresa Fullerson and Lillian Kitto.

The members of Court St. Catherine voted to give a girls scholarship to some worthy girl from the School of the Nativity to some Catholic High School.

A food sale will be held on March 31st in front of the Levy Department Store with the Ways and Mean Chairmen Mesdames Frank J. Farrell and T. T. Bahitt in charge.

2 Morning Services

EASTER SUNDAY



CORNER OF MANUEL AND CARSON - TORRANCE

First Baptist Church

8:30 "Resurrection Prophecy Fulfilled" - Rev. Russell Killman
9:30 Sunday School Hour
10:30 "The Stone Rolled Away" - Rev. C. Miles Northrup.
7:00 Evangelistic Hour

HOUSEHOLD ENAMEL . . .

For All Types of Interior and Exterior Surfaces

Waterproof Enamel is economical to use. It brushes on smoothly and evenly and retains its high luster for years.

Joslin Lumber Co.

1782 W. Carson St., Torrance
OPEN ALL DAY SATURDAY AND SUNDAY TILL NOON FOR YOUR CONVENIENCE.

Service DIRECTORY

Auto Painting Camomile Auto Paint **FR. 5-1248**

Complete Auto Painting Service. Body and Fender Work. Accidents Will Happen - Let Us Fix 'Em.

1501 So. Pacific Coast Highway Redondo Beach

AUTO TOP AND SEAT COVERS TOR 3193

C. YEAMAN
Seat Covers in Plastic-Fiber-Nylon-Rayon Plaids
Complete Auto Re-Upholstering - Time Payments

TORRANCE Corner of Cabrillo and Border Avenue
Open Tuesday and Friday Nights, 7 to 8 p. m., for Estimates

BRAKES VIRGEL'S TOR 1783

WHEEL ALIGNMENT
COMPLETE BRAKE SERVICE

Torrance Most Modern and Complete Repair Station
Located Across from National Supply on
1750 W. CARSON ST.

Roth's

Hawthorne 115 S. Hawthorne Torrance 1321 POST AVENUE

2713 E. MAIN STREET, VENTURA
2412 PICO BLVD., SANTA MONICA

5521 S. BROADWAY, LOS ANGELES

310 EAST MANCHESTER, LOS ANGELES
8240 E. FIRESTONE, DOWNEY

Limit Rights Reserved

Tax Added to All Taxable Items

PRICES EFFECTIVE MARCH 22, 23, 24, 25

OPEN EVENINGS **ROTH SELF SERVICE MEATS** OPEN SUNDAYS



IOWA READY TO EAT

SELECTED **Eastern Ham** Large Piece to Bake **49**¢ lb

CUDAHY'S WICKLOW **SLICED BACON** Eastern Cello Wrapped **37**¢ lb
Waterloo Sliced Bacon 59¢ lb

EASTERN CORN FED **PORK LOIN ROAST** BLADE END **49**¢ lb

FARMER JOHN'S **LINK SAUSAGE** **55**¢ lb

IOWA CORN FED **PORK CHOPS** Blade End **49**¢ lb

YOUNG TOM TURKEYS Oven Ready No Waste **45**¢ lb

CENTER Cut **Ham Slices** 98¢ lb **FRESH FILLET Sea Bass** **55**¢ lb

ROTH SELF SERVICE DELICATESSEN

FINEST QUALITY BEEF KOSHER STYLE SALAMI **45**¢ lb

FRESH MADE **Potato Salad** **29**¢ lb
FULL CREAMED **Longhorn Cheese** **49**¢ lb

ROTHS LIQUOR DEPARTMENT

WE CARRY A COMPLETE LINE OF **BOCK BEER** Lucky Lager 11-oz. Bot. Eastside Bot. Acme **15**¢

Utica Club Eastern **BEER** 2 Cans For **25**¢
Roma Estate Sweet **WINE** **79**¢ Full Fifth
Grand Monarque French **BRANDY** 10 Years Old **\$3.69** Full Fifth



Enjoy a Day

EAS

FR

ROTHS

MIRACLE WHIP

SALAD Dressing Full Quart **5**¢

PILLSBURY

FLOUR 10-lb. Bag **89**¢

NANNETTE

FACIAL

NATION'S TASTE

GRAPEFR

LIBBY - FANCY HAWAIIAN

PINEA

IVORY SOAP LARGE **15**¢

IVORY SOAP MEDIUM **9**¢

PERSONAL IVORY **7**¢

IVORY FLAKES 1-oz. Pkg. **29**¢

IVORY SNOW 1-oz. Pkg. **29**¢

CAMAY Reg. Bar **9**¢

Sioux Bee—12-oz. Jar **HONEY** **25**¢

Sioux Bee—16-oz. Ctn. **Cr'm'd Honey** **31**¢

Reg. Size. **Wilson's B.V.** **31**¢

Sunshine—1-lb. Ctn. **CRACKERS** **29**¢

JEWEL—Full Qt. SALAD OIL **77**¢

FRANCO AMERICAN 10-oz. Can BEEF GRAVY **17**¢

SUPERION—6 1/2-oz. Ctn. Honey Butter **31**¢

COMMANDER MAINE

Sardines 2 Flat Cans **15**¢

RED CROWN SLICED

BEEF 2-oz. Glass **29**¢

SWIFT'S—Reg. Can **CLEANSER** **13**¢

SWEETHEART—Reg. Bar **SOAP** **9**¢

BLACK FLAG—Full Pint **FLY SPRAY** **33**¢

Reg. Pkg. **MODESS** **36**¢

1¢ SALE

8 Tender Leaf

TEA BALLS ONLY 1¢

when you buy 16 at regular price! **21**¢

BELLS—4 1/2-oz. Can **Chopp. Olives** **10**¢

Butter Kernel-303 Can **P's & Carrots** **21**¢

Butter Kernel-303 Can **Crm. Sty. Corn** **19**¢

Campfire—16-oz. Pkg. **Marshmallows** **23**¢

COMPARE!! LOW PRICES EVERY DAY - SUPER