

... Taxes

(Continued from Page 1) from the County Assessor indicated an increase of \$93,000 in revenue—but he cautioned it was not sufficient to eliminate the five-year deficit he had predicted.

THE PROJECTION, based on a \$2.90 tax rate this year and a \$3.30 tax rate during the next four years, had predicted a \$230,000 deficit at the end of the five-year period.

Mrs. Kenneth E. Watts opened debate when she asked the board to "consider long and seriously before we don't collect any of this override."

Mrs. Watts was joined by William Hanson, who had asked in early June that the board collect all of the available taxes and put it into the surplus. "We have an obligation not to use all the reserve before the five years is up," Hanson said.

DR. J. H. HULL, superintendent of schools, said the issue was more of a "moral issue than a financial one." Dr. Hull said in such a case, the board would have to decide where its obligation was—with the "kids or taxpayers." He clearly voted for the kids.

Before the long debate ended, Lynn charged administration would spend all the money it could get. "I disagree with the position that the 40 cents which was voted gave us a mandate to spend it," Lynn said. "I don't think we have to collect additional taxes this year."

The issue was resolved when Albert Charles offered a motion setting the tax rate at about \$3.05 or \$3.10 per \$100—enough to require a maximum of \$450,000 in reserve funds to balance the budget. The motion carried 3-2, with Charles, Hanson, and Mrs. Watts voting for it. **LYNN, CLEARLY** angry at

Obituaries

JULIUS G. HINCKLEY

Requiem mass for Julius George Hinckley, 62, was celebrated Tuesday morning at Nativity Catholic Church. Rosary was recited Monday evening at the Stone and Myers Mortuary Chapel.

Mr. Hinckley, who made his home in Lancaster during the past few years, died in that city July 17. He has been employed in a Lancaster hospital.

He is survived by his widow, Lela M.; a son, George of Los Angeles; three daughters, Mrs. Kathleen Cervantes of El Monte, Mrs. Corinne Porras of Lomita, and Juliet Hinckley of Torrance; 10 grandchildren, and two great-grandchildren.

Interment was in Calvary Cemetery, Los Angeles.

WILLIAM M. ANDERSON

Funeral services for William Mathew Anderson, 73, of 1619 1/2 Cabrillo Ave., will be held in Great Falls, Mont., with Stone and Myers Mortuary in charge of local arrangements.

Mr. Anderson, a resident of Torrance for the past 17 years, died July 18.

Interment will be in Highland Cemetery, Great Falls, Mont.

the hike, exploded. "I hope in future years you can put the horse in front of the cart," Lynn said. "A majority of the board has trapped the whole board." Lynn's reference was to the 3-2 vote which hiked teacher salaries a month ago—a move which he opposed.

Charles, defending his motion, said he had taken a conservative position. Mrs. Watts, joining in the after-the-vote debate, argued the board has still left room for changes. "No law says we have to collect the whole 40 cents next year," she said.

The board is scheduled to hold a public hearing on the

... Crime

(Continued from Page 1) persons in the national population.

Crimes against property had an overall 11 per cent rise. Larceny, \$50 and over, climbed 13 per cent, auto theft 11, burglary 9 and robbery 5. These crimes comprise 92 per cent of the total Crime Index offenses. Crimes against the person likewise showed an increase of 5 per cent as a group, with aggravated assault up 6 per cent and forcible rape and murder 1 per cent each. There were over two and one-quarter million serious crimes reported in 1963.

This continued upswing in crime was consistent in all areas. Led by the suburban communities which were up 13 per cent, the cities averaged a 10 per cent rise and rural areas about 6 per cent. Geographically, the trend was uniform, with the North Central states up 6 per cent, the Western states 10, Southern states 12 and the Northeastern states 13 per cent.

... Chamber

(Continued from Page 1) study on his master plan memorandum.

- Approved a change in parking restrictions for Paseo de la Playa, prohibiting parking on the streets between 2 and 5 a.m.

- Adopted an emergency ordinance waiving residency requirements for police officers, a measure designed to provide manpower to fill vacancies in the Police Department.

- Awarded a contract for the construction of the North Torrance Branch Library to Parr Contracting Co. for \$65,890.

budget at its session Aug. 3. Final action is expected then. The tax rate will be officially set by the Board of Supervisors when all assessments are computed.

... Oil

(Continued from Page 1) Kenneth Miller told his colleagues, Miller, and Ross A. Sciarrotta Sr., said they objected last week because of the location. Both said they had no objections to the new location.

MILLER AND Sciarrotta were joined by David K. Lyman, H. T. "Ted" Olson, and J. A. Beasley is voting to adopt the new ordinance. George Vico voted with Mayor Isen against the proposal.

"I hope it's dry," Isen told Lacombe after the vote. "I can't see any benefit for the city. We've been fighting oil wells in this city for 25 years."

The ordinance must clear the councilmanic hurdle once more before it becomes effective. It will probably be on the agenda for the Aug. 4 meeting.

Local Woman To Head Sales Staff

Mrs. Margaret Islander, 3522 W. 227th Place, has been appointed a direct distributor for the Amway Corp., of Ada, Mich. The appointment is given only to those reaching a high level of sales and is held by only a few of the Amway's nationwide sales force.

... Golf

(Continued from Page 1) "That's the reason for the study," he added.

The City Manager did say the estimated cost of developing a course is in the neighborhood of \$3.5 or \$4 million. Current thinking is for an 18-hole PGA Championship course on 188 acres of land at the northwest corner of Sepulveda and Crenshaw boulevards.

Both Ferraro and Mayor Isen noted public reaction to the idea has been enthusiastic. Ferraro said the city would be pushing to get the issue ready for a November ballot, but he said it could be done.

Film Showing on Poland Scheduled

A film on the life of Michelangelo, "The Titan," will be presented at 8 p.m. tonight at the Joslyn Recreation Center, 3335 Torrance Blvd., as part of the fine arts program of the Torrance Recreation Department.

The 67-minute film has been highly acclaimed, and is being presented in answer to many requests for a continuance of the winter film series. The showing will be free to the public.

Aircraft Engine

A 190-horsepower Lycoming aircraft engine was donated to the Torrance schools Monday evening. Jack O'Barr of 4931 Carson St., made the donation.

JULY 22, 1964

PRESS-HERALD

3

500,000 VICTIMS
Multiple sclerosis strikes life, MS and related diseases the central nervous system of afflict an estimated 500,000 young people in the prime of Americans.

EARN 4.85%

Now—your savings are paid higher returns than ever before... free from market fluctuations. This is the time to open an insured Southwest Savings account... in person... or by mail. Funds received by the 10th of the month earn from the 1st.

INGLEWOOD: 2700 W. Manchester (at 6th Ave.)—PL 3-2164 (Main Office)
TORRANCE: 1603 Cravens (at Marcelina)—FA 8-6111

Mon. thru Thurs.—9:30 am to 4 pm—Fri. to 6 pm

Southwest Savings
AND LOAN ASSOCIATION



COME TO THE TORRANCE RANCHERO DAYS

JULY 29 thru AUG. 2 at the DEL AMO CENTER SEPULVEDA AT MADRONA

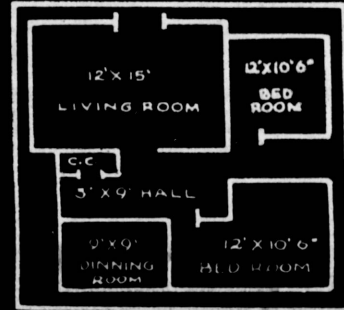
- CARNIVAL 4 p.m. to 10 p.m. July 29 Through Aug. 2.
- PARADE (Starts Cabrillo and Cravens and ends at City Hall) Sat., Aug. 1.
- RODEO (Starts 12 Noon) Aug. 1 and Aug. 2. Adults, 1.50; Children under 12, 75c.

WIN 5 DAY TRIP TO ACAPULCO FOR TWO Drawing tickets (\$1) sold by Tor. Mounted Police and Jr. Chamber of Commerce.

YOUR ENTIRE HOME CARPETED WALL TO WALL

WITH 100% CONTINUOUS FILAMENT NYLON ...

Yes, an entire house of carpeting. 60 sq. yards installed wall to wall in your living room, dining room, hall and 2 bedrooms... at these low, low Artistic prices.



4 DAYS ONLY — THURSDAY, FRIDAY, SATURDAY, SUNDAY

NEVER BEFORE AT SUCH LOW PRICES!

100% CONTINUOUS FILAMENT NYLON COMPLETELY INSTALLED 5 YEAR WEAR GUARANTEE

\$289

PRICE INCLUDES Heavy 50-oz. padding, invisible tackless stripping, door metals and labor. NOTHING ELSE TO BUY!

NO MONEY DOWN • BANK TERMS

PHONE 370-4371

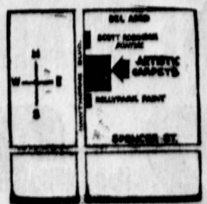
SAMPLES BROUGHT TO YOUR HOME NO OBLIGATION! PHONE TODAY!

PHONE 370-4371

OPEN DAILY 9-9 SAT. 9-6 SUN. 10-5

Artistic Carpets

20352 HAWTHORNE BLVD., TORRANCE



stop

where you see this sign of Balanced Power you'll live better... spend less



- ✘ Your Balanced Power home or apartment uses both gas and electricity. Electricity runs the lights, TV, small appliances.
- ✘ And in your Balanced Power home or apartment Gas does the big jobs of cooking, heating and air conditioning, clothes drying, water heating.
- ✘ Gas is faster. And costs you a whole of a lot less. That's the big difference!

- ✘ When you let each power do what it does best, your monthly bills are smaller. Over the life of your mortgage, you can save thousands of dollars.
- ✘ You'll find the sign of Balanced Power in the advertisements of smart builders throughout this real estate section, and displayed on new homes and apartments wherever you go in Southern California.

©SOUTHERN CALIFORNIA GAS COMPANY