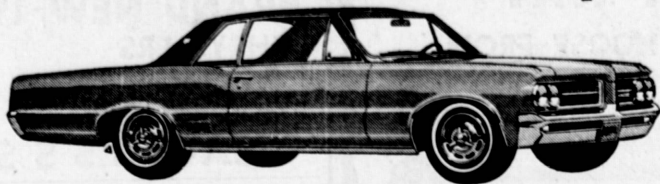


● Automotive 190 ● Automotive 190 ● Automotive 190 ● Automotive 190 ● Automotive 190 ● Automotive 190 ● Automotive 190 ● Automotive 190
AUTOMOBILES For Sale AUTOMOBILES For Sale AUTOMOBILES For Sale AUTOMOBILES For Sale AUTOMOBILES For Sale AUTOMOBILES For Sale AUTOMOBILES For Sale AUTOMOBILES For Sale

SCOTT ROBINSON PONTIAC SPECIALS

GTO LeMans Coupe



Enjoy Driving the Fabulous GTO Le Mans Coupe at This Low Price

\$2795

Delivered
in
Torrance

Includes 3 speed floor mounted stick shift, bucket seats, deluxe trim, dual exhaust, 389 cu. in. engine, heavy duty suspension, whitewalls.

EXTRA SPECIAL

THIS IS THE FIRST TIME THAT WE HAVE BEEN ABLE TO OFFER THE
ALL NEW '64 GRAND PRIXS FOR

IMMEDIATE DELIVERY '64 GRAND PRIX

FULLY EQUIPPED, INCLUDING AUTOMATIC TRANSMISSION, POWER STEERING & BRAKES
HEATER, WHITEWALL TIRES, SEAT BELTS, BUCKET SEATS, CONSOLE, DUAL EXHAUSTS,
ELECTRIC CLOCK, MANY OTHER EXTRAS.

\$3674

DELIVERED IN TORRANCE

PLUS TAX AND LICENSE



**IF ANY USED CAR PURCHASED FROM US PROVES UNSATISFACTORY IN ANY WAY
WITHIN 5 DAYS IT WILL BE ACCEPTED AT FULL PURCHASE PRICE ON THE
PURCHASE OF ANY NEW OR USED CAR IN STOCK!**

'60 BUICK SKYLARK \$2495 FULL POWER, FACTORY AIR CONDITIONING.	'63 TEMPEST V-8 \$2295 LE MANS, STICK SHIFT.	'59 PONTIAC \$795 CATALINA SPORT COUPE	'61 PONTIAC SAFARI \$2195 STATION WAGON, 9-PASSENGER, FULL POWER.
'62 FORD V-8 \$1495 2-DOOR, RADIO AND HEATER.	'61 CHEVROLET IMPALA \$1795 HARDTOP COUPE, 8 CYLINDER, STICK SHIFT.	'61 FORD \$1295 CONVERTIBLE	'63 CORVAIR \$1895 MONZA COUPE.
'61 TEMPEST \$1095 SEDAN, LOTS OF EXTRAS.	'60 PONTIAC \$1495 VENTURA HARDTOP, STICK SHIFT.	'63 CHEVROLET IMPALA \$2495 SUPER SPORT COUPE, 4 SPEED BIG ENGINE.	'59 RAMBLER \$495 AMERICAN WAGON.
'63 TEMPEST V-8 \$2595 LE MANS, AUTOMATIC, AIR CONDITIONING.	'60 BUICK ELECTRA 225 \$1795 CONVERTIBLE, FULL POWER, FACTORY AIR.	'62 CHEVROLET \$2095 IMPALA CONVERTIBLE	'60 OLDSMOBILE "98" \$1795 HOLIDAY COUPE, ALL POWER, FACTORY AIR.
'60 PLYMOUTH \$1195 SPORT FURY, FULL POWER.	'63 FORD \$2395 GALAXIE 500 HARDTOP.	'60 PONTIAC \$1495 CATALINA HARDTOP.	'62 MERCURY METEOR \$1495 AUTOMATIC, POWER, DELUXE TRANSMISSION
'60 CHEVROLET \$1295 PARKWOOD STATION WAGON.	'62 MERCURY \$2495 COLONY PARK STATION WAGON		

SAVE
\$\$\$
NOW

HOW ABOUT THIS FOR SELECTION?

SCOTT ROBINSON PONTIAC

20340 HAWTHORNE BLVD., FR 1-3521 — TORRANCE — OPEN SUNDAY

TO BUY, RENT, SELL, HIRE--USE PRESS-HERALD WANT ADS! CALL FA 8-4000

1640 CABRILLO AVE., Downtown Torrance
PHONE FA 8-1644

PAUL'S CHEVROLET

20725 HAWTHORNE BLVD., Torrance
PHONE FA 8-3352

1959 PONTIAC CATALINA

4 Door Hardtop, automatic
transmission, power steering,
radio & heater, white
walls. Beige & gold finish.

\$899



'60 CHEVROLET 4-DOOR 6-PASS. STATION WAGON

V8 engine, automatic trans-
mission, power steering,
radio, heater, white walls
smart ivory and gold tu-
tone.

\$1349



1959 CHEVROLET BEL AIR HARDTOP

2 Door V8, automatic
transmission, radio & heat-
er, White walls. Complet-
ely reconditioned.

\$999



'62 PONTIAC CATALINA 2-DOOR HARDTOP

V8 engine, automatic trans-
mission, power steering,
VENTURA TRIM!! Radio,
heater, white walls and
smart Honduras maroon.

\$2275



1959 RAMBLER 4-DOOR STATION WAGON

Economy 6. Money saving
standard transmission. Ra-
dio & heater. White walls.
Economy in every way.

\$949



1962 CHEVROLET

1/2-TON

Economy 6, standard trans,
radio & heater, 8 ft. bed.
Perfect for camper.

\$1529



Paul's New Car Clean-up Sale Still Hot!

JUST ONE OF 350 TOP BUYS AVAILABLE

BRAND NEW '64 IMPALA SPORT COUPE

STOCK NO. 866 . . . Powerglide, power steering, whitewalls, tinted glass,
padded dash, seat belts. Silver blue — Was \$3146.95 . . .

SALE PRICE **\$2727** AT PAUL'S
THEY'RE GOING, GOING, GOING, GONE

'58 CADILLAC SEDAN DeVILLE

V8 engine, Hydramatic, ra-
dio, heater, white walls and
EVERYTHING POWER!
... Windows, seats, steer-
ing and brakes! Alpine
ivory finish, Factory orig-
inal!

\$1299



'62 VOLKSWAGEN SHOWROOM FRESH

Pale green finish . . . Buy
gas with the money you
save at Paul's Chevrolet!

\$1399



1963 CHEVROLET IMPALA COUPE

V8, automatic, radio, heat-
er, power steering, white-
walls, many more extras.
Solid ivory with red in-
terior.

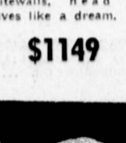
\$2479



1961 MONZA COUPE

Stick shift, radio, heater,
whitewalls, head rest.
Drives like a dream.

\$1149



1963 MONZA SPYDER COUPE

4 speed, tachometer, mag-
nesium wheels, big engine.

\$1899



1963 FORD V-8

GALAXIE "500"

Hardtop Coupe, Automatic,
radio, heater, power steer-
ing, whitewalls, smart sky
blue finish, contrasting in-
terior.

\$2299



1962 CHEVY II STATION WAGON

Economy 6 cylinder, auto-
matic, radio, heater, white-
walls, perfect for summer
fun.

\$1599



Paul's



Your Satisfaction Is Our Future Business

1640 Cabrillo Ave., Downtown Torrance FA 8-1644
WE KEEP THE BEST . . . WHOLESALE THE REST!!

20725 Hawthorne Blvd., Torrance
MANY MORE O.K. USED CARS TO CHOOSE FROM

Buyin', Sellin', Findin', Tellin' ... Try PRESS-HERALD WANT ADS ... They Do the Job!