

## VA Has Waiting List Of Mental Patients

One third of the Veterans Administration's 115,000 hospitalized veterans, the normally long-term mental patient classified as schizophrenic, can safely be returned to community life for considerable periods of time, oftentimes permanently, according to Dr. Thomas Hardgrove, director of VA's Sepulveda, California Hospital.

The agency based its findings on a five-year research

program now nearing completion. The study, involving 1,319 patients in 12 VA neuropsychiatric hospitals, indicates that ex-patients of this type contribute fewer acts of violence, fewer felonies, and fewer alcoholic cases to the police blotters of their communities than the average male.

The VA's waiting list for hospital beds is normally half of those receiving hospitalization in VA's 168 hospitals totaling 11,600 last March 31.

Release, whenever possible of the patients, makes inroads into this backlog. The schizophrenic, generally characterized as one who has lost contact with reality, normally represents 75 per cent of those veterans occupying VA neuropsychiatric beds. All types of men-

ment and to their families. More than 50 VA research psychologists, statisticians and medical personnel have contributed to the psychiatric evaluation project.

## City Seeks Key Punch Operator

Examinations for a key punch operator for the City of Torrance will be given Aug. 1 at 9 a.m. at the Torrance Recreation Center, 3341 Torrance Blvd.

Applicants must file by July 22. The position is in the city's finance department. Applicants must have graduated from high school and have at least one year of experience.

Salary ranges from \$413 to \$456 per month. Applications may be obtained from the personnel department at city hall.



ERIC V. BRUSH  
Wins Scholarship

## Leuzinger Grad Gets Tech Grant

Eric V. Brush, son of Mrs Orane Brush of 3335 W. Artesia Blvd., has been awarded the James L. McKinley scholarship at Northrop Institute of Technology.

Brush is a June graduate of Leuzinger High School, Hawthorne. He will enter the aeronautical and astronautical engineering program at Northrop at the beginning of the fall quarter.

The scholarship award was established by the first president of Northrop Institute. It provides for one fully paid scholarship annually to a candidate for a bachelor of science degree.

## New Liquor Department At Thrifty

Robert G. Borton, manager of the Thrifty Drug Store in Torrance's Rolling Hills Plaza Shopping Center, announced today that due to continued public demand, another service has been added to the ultra-modern Thrifty with the installation of a complete liquor and beverage department.

Customers can now obtain any beverage they desire in the complete liquor department of the Rolling Hills Plaza Thrifty Drug Store located at the intersection of Crenshaw Boulevard and Pacific Coast Highway.

FOR MANY years Thrifty Drug Store has been the largest retail liquor outlet in the entire state of California. Tremendous buying power, coupled with many years of buying experience have resulted in Thrifty's liquor departments offering the finest in selection and variety.

Customers of the Rolling Hills Plaza Thrifty Drug will now find a complete department that offers quality liquors at Thrifty's low prices. In addition to a complete line of Scotch, Bourbon, rye, gin, vodka, liqueurs, cordials, and wines, a large self-service refrigerated beverage box will feature all brands of beers and soft drinks.

WHETHER it be for a gift or your own home use, a wide variety of glassware and bar equipment will be stocked in the new liquor department of the Rolling Hills Thrifty Drug Store.

Included in the array are bar tools, mixers, trays, coasters, cocktail, and specialty drink glassware.

## Stamp Club to Meet Monday

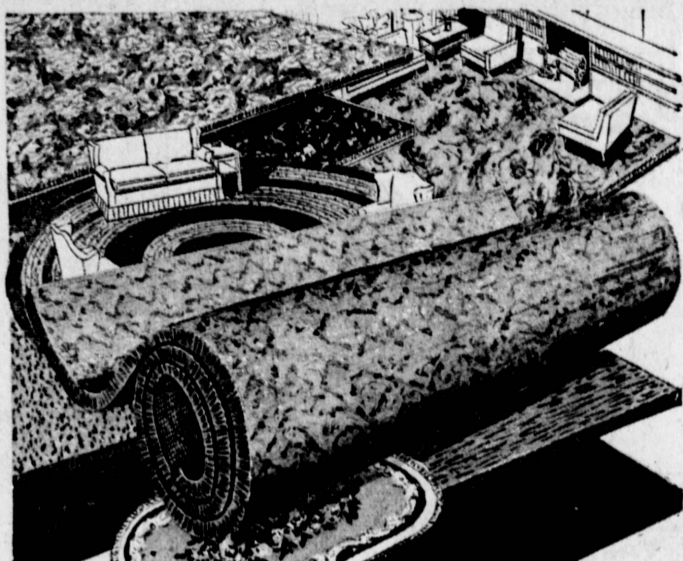
The Torrance Stamp Club will meet at 7:30 p.m. Monday at the Scott Park Community Building, 23410 Cat-skill Ave., Wilmington.

An addition to the club is a bid board, featured in many of the stamp shops. On it collectors can list stamps they have for trade or sale, and other collectors can watch for those they want.

Information about the club may be gotten by calling Walter Taylor, TE 4-6718.

## Contract Awarded

Torrance school trustees awarded contracts worth \$14,570 for miscellaneous paper and instructional supplies during a session Monday.



PLEASE ASK FOR CARPET REMNANT BY NUMBER, FIRST COME, FIRST SERVED!

NO.	SALE PRICE	NO.	SALE PRICE	NO.	SALE PRICE
1	12x19.6—Cabin Craft Acrilan Martini—Reg. Price 312.00 <b>156.00</b>	29	12x17.6—Cabin Craft Light Apricot Textured Cotton—Reg. Price 164.50 <b>70.00</b>	54	12x11.2—Wunda Weve Brown & Beige Cotton Tweed—Reg. Price 150.00 <b>89.00</b>
2	12x18.6—Royal Weve Nylon Olive—Reg. Price 125.00 <b>75.00</b>	30	12x14.1—Wunda Weve Hi-Low Nylon Cocoa—Reg. Price 164.50 <b>70.00</b>	55	12x9.8—Wunda Weve Gold Plush Cotton—Reg. Price 130.00 <b>78.00</b>
3	12x24—Hi Low Ivory Nylon—Reg. Price 224.00 <b>128.00</b>	31	12x11.5—Wunda Weve Ant. Gold Heavy Nylon—Reg. Price 138.00 <b>77.50</b>	56	12x30.4—Aurora Textured Nylon Lt. Honey Beige—Reg. Price 243.00 <b>142.00</b>
4	12x15—Wool Loop Rose Beige—Reg. Price 160.00 <b>80.00</b>	32	12x24.9—Wunda Weve Hi-Low Nylon Parch—Reg. Price 297.00 <b>165.00</b>	57	12x13—Mohawk Gold Plush Acrilan—Reg. Price 173.33 <b>86.33</b>
5	12x15—Gold Sculptured Nylon—Reg. Price 200.00 <b>99.50</b>	33	12x14.9—Muted Beige Nylon—Reg. Price 160.00 <b>100.00</b>	58	12x12.3—Avocado Textured Nylon—Reg. Price 99.00 <b>60.00</b>
6	12x17—Cabin Craft Blue Hi-Low Nylon—Reg. Price 184.00 <b>115.00</b>	34	12x20—Green Nylon Frieze—Reg. Price 135.00 <b>69.50</b>	59	12x14.9—Starlite Off White Textured Nylon—Reg. Price 100.00 <b>60.00</b>
7	12x17.4—Rose Beige Textured Nylon—Reg. Price 164.50 <b>94.00</b>	35	10.8x12—Desert Frost Nylon—Reg. Price 58.00 <b>49.00</b>	60	12x18.6—Sandalwood Textured Nylon—Reg. Price 172.66 <b>85.17</b>
8	12x12—Beige Textured Nylon—Reg. Price 144.00 <b>80.00</b>	36	12x16.4—Ivory Multi-Level Nylon—Reg. Price 208.00 <b>110.00</b>	61	12x9.6—Lt. Beige Cut Pile Sculptured Nylon—Reg. Price 123.33 <b>61.80</b>
9	12x13.8—Heavy Rose Beige Wool Frieze—Reg. Price 179.00 <b>89.50</b>	37	12x38.6—Gulistan Acrilan Loop Martini Beige—Reg. Price 503.00 <b>200.00</b>	62	12x15—Beige Multi-Level Nylon—Reg. Price 140.00 <b>79.50</b>
10	12x17.2—Sculptured Beige Nylon—Reg. Price 230.00 <b>115.00</b>	38	8x9.11—Gold Wool Loop—Reg. Price 36.00 <b>19.50</b>	63	12x35—Beige Wool Hi-Low—Reg. Price 188.00 <b>117.50</b>
11	12x15—Beige and Cocoa Nylon Tweed—Reg. Price 140.00 <b>69.00</b>	39	15x9—Gulistan Wool Brown & 15x9 Beige—Reg. Price 135.00 <b>75.00</b>	64	12x12.6—Royal Weve Beige Textured Nylon—Reg. Price 76.50 <b>51.00</b>
12	12x13.1—Wunda Weve Gold Nylon Plush—Reg. Price 210.00 <b>105.00</b>	40	15x9—Gulistan Herculon Gold Hi-Low—Reg. Price 135.00 <b>75.00</b>	65	12x15—Royal Weve Teal Green Textured Nylon—Reg. Price 120.00 <b>60.00</b>
13	12x13.11—Wunda Weve Antique Gold Nylon—Reg. Price 149.50 <b>92.50</b>	41	12x9.7—Rose Beige Textured Acrilan—Reg. Price 130.00 <b>65.00</b>	66	10x12.2—Wunda Weve Teal Green Plush Cotton—Reg. Price 132.00 <b>81.00</b>
14	12x17.8—Sandalwood Textured Nylon—Reg. Price 164.50 <b>96.00</b>	42	12x11.10—Light Blue Textured Nylon—Reg. Price 112.00 <b>64.00</b>	67	12x9—Wunda Weve Light Blue Plush Cotton—Reg. Price 120.00 <b>74.00</b>
15	12x15.5—Gold Textured Nylon—Reg. Price 143.50 <b>82.00</b>	43	12x12.7—Gold Textured Nylon—Reg. Price 142.00 <b>85.00</b>	68	11.3x11.9—Martini Beige Plush Cotton—Reg. Price 59.00 <b>37.50</b>
16	12x22.3—Two-toned Beige Nylon—Reg. Price 180.00 <b>107.00</b>	44	12x19.8—Wunda Weve Hi-Low Nylon—Reg. Price 233.00 <b>129.50</b>	69	12x10.8—Mohawk Gold Plush Acrilan—Reg. Price 143.33 <b>71.75</b>
17	12x15—Beige Heavy Wool Loop—Reg. Price 160.00 <b>80.00</b>	45	12x10.10—Martini Textured Nylon—Reg. Price 67.00 <b>44.50</b>	70	12x18—Red Cotton Boucle—Reg. Price 108.00 <b>79.50</b>
18	12x21.6—Rosewood Multi-Level Nylon—Reg. Price 199.60 <b>108.00</b>	46	12x16.6—Brown Rayon Tweed—Reg. Price 66.00 <b>44.00</b>	71	12x42—Gold Wool Hi-Low 58 sq. yds.—Reg. Price 29500 <b>159.50</b>
19	12x19.9—Olive Textured Nylon—Reg. Price 130.00 <b>99.00</b>	47	12x13—Cabin Craft's Party Time Russet Tweed—Reg. Price 190.00 <b>104.00</b>	72	12x18.10—Cabin Craft Deep Springs Grey Nylon—Reg. Price 200.00 <b>125.00</b>
20	11.9x16.7—Multi-color Wool Braid—Reg. Price 220.00 <b>110.00</b>	48	12x14.4—Mohawk Spice Beige Nylon—Reg. Price 133.00 <b>76.00</b>	73	12x18.1—Bigelow Bacara Brown Tweed—Reg. Price 228.00 <b>156.00</b>
21	12x22.10—Beige Textured Nylon—Reg. Price 182.00 <b>107.00</b>	49	12x18.10—Beige Textured Nylon—Reg. Price 125.00 <b>87.50</b>	74	12x28—Sandalwood Textured Nylon—Reg. Price 261.33 <b>130.60</b>
22	12x19.2—Bronze Gold Fuzzy Nylon—Reg. Price 182.00 <b>91.00</b>	50	12x15.6—Gold Textured Nylon—Reg. Price 103.00 <b>68.00</b>	75	15x25.10—Wunda Weve Balfour Ant. Godl Nylon—Reg. Price 559.00 <b>301.00</b>
23	12x15.8—Sauterne Textured Nylon—Reg. Price 209.00 <b>105.00</b>	51	7.2x7.11—Red Textured Nylon—Reg. Price 27.00 <b>14.50</b>	76	10x23—Wunda Weve Plush Point Ivory Acrilan—Reg. Price 286.00 <b>156.00</b>
24	7.2x9.2—Sauterne Textured Nylon—Reg. Price 56.00 <b>28.00</b>	52	12x8.9—Royal Blue Hi-Low Nylon—Reg. Price 96.00 <b>57.50</b>	77	12x52—Wunda Weve Shell Beige Nylon 69 1/2 yds.—Reg. Price 552.00 <b>420.00</b>
25	12x18—Pink Cotton Plush—Reg. Price 96.00 <b>48.00</b>	53	12x42.9—Wool & Rayon Candy Stripe, 57 sq. yds.—Reg. Price 285.00 <b>171.50</b>	78	12x15.1—Wool Turf Off White—Reg. Price 300.00 <b>200.00</b>
26	12x21—Ivory Multi-Level Nylon—Reg. Price 196.00 <b>124.00</b>			79	15x13.6—Herculon Off White Sculptured—Reg. Price 202.50 <b>112.50</b>
27	12.6x15—Rose Beige Textured Nylon—Reg. Price 140.00 <b>70.00</b>			80	15x21.3—Red Acrilan Plush—Reg. Price 385.00 <b>192.50</b>
28	12x48.9—Wunda Weve Off White Plush Cotton—Reg. Price 520.00 <b>260.00</b>				

ARMSTRONG  
**VINYL FLOORING**

★ MONTINA  
★ PATRICIAN  
★ TESSERA

**3<sup>99</sup>** sq. yd.

Assorted colors available, bring in your measurements

FORMERLY  
RAY'S  
FLOOR COVERING

CASH AND CARRY OR USE YOUR BANKAMERICARD  
DON'T MISS THIS SALE, LAST CHANCE  
Bring a pick-up and haul it away or we can arrange delivery at nominal charges. All sales final... no returns.

HUNDREDS OF  
**CARPET REMNANTS**  
3' x 3' to 3' x 5'  
SPECIAL **99<sup>c</sup>**

# 24010 HAWTHORNE AVE., TORRANCE

DAILY 9 A.M. TO 6 P.M. — (NO SUNDAYS) — FRIDAY 9 A.M. TO 9 P.M. FR 8-6241 (JUST NORTH OF PACIFIC COAST HIGHWAY)