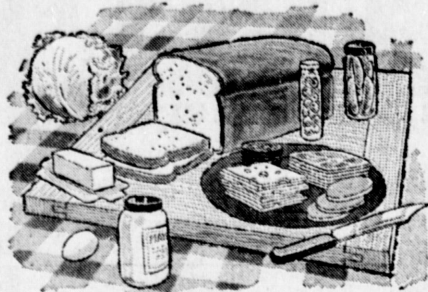


COME AND SEE HOW MUCH MEMBERSHIP BUYING CAN REALLY SAVE YOU AT
CERTI-BOND, "THE FRIENDLY ONE!"
 MEMBERSHIP DEPARTMENT STORE WITH COMPLETE SUPERMARKET

OPEN JULY FOURTH, 10 A.M. TILL 6 P.M. • 501 VAN NESS AVE., TORRANCE



CHUCK JONES,
 THE MAGIC MAN, IN PERSON
 JULY 4th — 10:30 TO 12:30

GARDEN SHOP

Martha Washington Geraniums

Many colors to choose from—really full of blooms. Now's the time to plant.



29^c
 ea

HARDWARE DEPT.

In-Sink-Erator Garbage Disposal



Continuous action at the flip of a switch . . . model No. 333.

\$26⁸⁷

FURNITURE DEPT.



High Back Early American Rockers

Dominant prints in your choice of red, gold, toast or beige backgrounds.

Billowy Foam Cushions,

Rich Salem Maple Finish

39⁸⁰

RECORD DEPT.



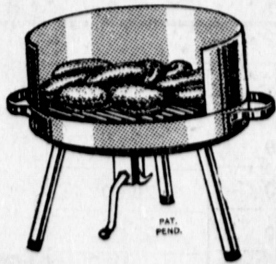
New '64 Christmas Cards

\$1.00⁰⁰ SIZE BOXES

Beautiful new 1964 designs . . . not '63 leftovers

48^c

HOUSEWARES DEPT.



Barbeque \$2⁸⁷

Crank raises and lowers grill—perfect for outdoor feasting.

DOMESTICS DEPT.

Cannon Towel Sets

Bath, hand and matching wash cloth in a lovely stripe edge, with our favorite "Poodle" screen prints—in blues and lilacs.

- BATH TOWELS 79c
- HAND TOWELS 52c
- WASH CLOTHS 24c

SHOE DEPT.

Sandals

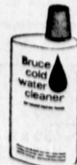
All leather things, imported from Italy, sizes 5 to 9 Leather Sole



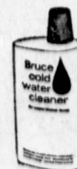
\$2⁷⁶

HOUSEWARES DEPT.

Bruce Cold Water Cleaner



For waxed kitchen floors—concentrated, makes 12 washings. 1 1/2 liquid pints.



97^c

HOUSEWARES DEPT.

Pole Shelves

For your bathroom, chrome plated finish—exactly as pictured.



\$6⁸⁷



Corn on the Cob

Fresh and Sweet

5^c
 EAR

SWEET LARGE
Cantaloupe 8[¢]

RIPE SWEET
Nectarines 2 lbs. 29^c

GROUND HOURLY

Fresh Extra Lean Ground Beef



3^{LBS} 87^c

Cornish Game Hens

DELICIOUS TREAT

49^c
 lb

MT. WHITNEY

LARGE OLIVES

EXTRA LARGE, PITTED, SUPER COLOSSAL

4 cans 98^c

CHRIS & PITT'S
BBQ SAUCE

12-OZ. BOTTLE **29^c**

26-oz. Pkg.

Morton Salt

PLAIN OR IODIZED

9^c

49c SIZE PACKAGE

Bell Brand Potato Chips

2 FOR 49^c

HICKORY RIVER — 10-LB.

Charcoal Briquets

49^c

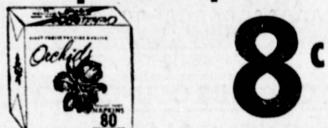
FOR SALADS AND SANDWICHES

Best Foods Mayonnaise

FULL QUART JAR **45^c**

PAPER WRAPPED

80 Count Orchids Paper Napkins



8^c

ORE.-IDA. BBQ FROZEN

Krinkle Cut Potatoes

10^c

24-OZ. DECANTER

New Crisco Oil



29^c

1-LB. PACKAGES

C & H Powdered or Brown Sugar

2 FOR 27^c

OSCAR MAYER — 1-LB.

All Meat Wieners

45^c

IMITATION

Cool Crest Ice Cream

BIG HALF GALLON CONTAINER **29^c**

MEADOW GOLD

Low Calorie Fruit Drinks

ASSORTED FLAVORS

2 HALF GALLONS **49^c**

FROZEN SIMPLE SIMON

9-inch Apple Pie

FAMILY SIZE **39^c**

CAMPBELL'S

Pork and Beans

2 28-OZ. CANS **37^c**

ASSORTED

Springfield Soda Pop

YOUR CHOICE 10 cans **69^c**

100 COUNT

Paper Plates

59^c