

June 11 thru Wed., June 17

FULL CENTER CUT  
**SEVEN BONE ROAST**  
OR  
**CHUCK STEAKS** **39¢** C lb

**ROUND BONE ROAST** **49¢** C lb

FANCY CHUCK  
**POT ROAST** **33¢** C lb

DUBUQUE'S FULLY COOKED  
CANNED  
**HAM**  
5-LBS. \$ **3.49**  
SMOKED



Frozen C-Plus  
**LIMEADE**  
**16 FOR \$1.00**

6-oz. Cans—Reg. 2 for 25c  
2.00 Value—Save 1.00  
MONDAY, JUNE 15 ONLY  
WITH THIS COUPON

Cal-Fame Frozen  
**LEMON DRINK**  
**16 FOR \$1.00**

Raspberry, Chocolate, Cherry  
— Reg. 2 for 25c  
2.00 Value—Save 1.00  
TUESDAY, JUNE 16 ONLY  
WITH THIS COUPON

Brea Gold Frozen  
**ORANGE JUICE**  
**8 FOR \$1.00**

6-oz. Can—Reg. 25c  
2.00 Value—Save 1.00  
WEDNESDAY, JUNE 17 ONLY  
WITH THIS COUPON

McCoy's All Purpose  
**Detergent**  
10-lb. **1.49** 25-lb. **2.59**

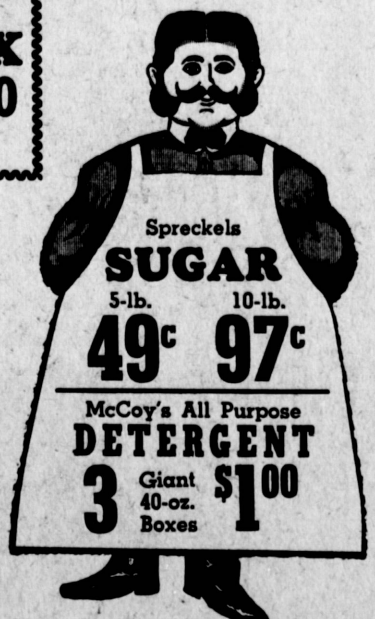
Seamless Nylon  
**HOSE**  
Reg. 59c Pair  
**3 PAIR \$1.00**

Time Brand  
**INSTANT COFFEE**  
6-oz. **79¢**

Cal Linda Whole  
**CHICKEN**  
3-lb. **79¢**  
4-oz.

**PEACHES** 7 No. 303 Cans **\$1.00**  
**CAKE MIX** 5 17-oz. Boxes **\$1.00**

CAL FAME — 46-oz. 39c  
**Grapefruit Juice** 29-oz. **4 FOR 1.00**  
5-LB. 33c; 10-LB. 59c  
**CHARCOAL** 20-lb. **99¢**  
McCoy's — Giant 39c  
**LIQUID DETERGENT** King. **49¢**  
LANGENDORF — Reg. 15c — 3.00 Value  
ANGEL — 2 to Pkg. — 40 Pcs  
**CHOCOLATE PIES** 20 **FOR 1.00**  
Sea-Boy Chunk Style — No. 1/2 Cans  
**LIGHT MEAT TUNA** 5 **FOR 1.00**  
BORDEN'S SLICED — 3-lb. Leaf  
**AMERICAN CHEESE** Lb. **59¢**  
STERLING  
**OLEO** 1-lb. Ctns. **6 FOR 79¢**  
RINGO FRUIT OR — Reg. 39c — 1/2-Gal.  
**ORANGE PUNCH** 4 **FOR 1.00**  
FISHER'S  
**BISCUIT MIX** 40-oz. **29¢**  
SNOWFLAKE  
**SODA CRACKERS** 1-lb. **25¢**  
HONEY MAID  
**GRAHAM CRACKERS** 1-lb. **29¢**  
SWIFT'S — 24-oz. 25c  
**JEWEL OIL** 45-oz. **49¢**  
FOR CAT SANITATION  
**TIDY CAT** 10-lb. **49¢**  
FISHER'S  
**PANCAKE MIX** 2-lb. **25¢**



50 to Box  
**BOOK MATCHES** 2 for **25¢**  
Market Queen — 22-oz. 25c; 54-oz. 49c  
**DILL PICKLES** No. 10 Jar **89¢**  
Market Queen — 22-oz.  
**SWEET RELISH** **35¢**  
Market Queen — 22-oz.  
**CUCUMBER CHIPS** **35¢**  
Size 7-10 1/2 — Reg. 2 Fr. Pkg. 89c Our Price **89¢**  
2 Pkgs. (4 Fr.)  
Supper Club — Picnic Cans  
**SHOESTRING POTATOES** 3 for **25¢**  
Borden's — 1-lb.  
**MALTED MILK** **49¢**  
Ladies — Size 8 to 10 — Reg. 1.99  
**KNEE KAPPERS** **99¢**  
Girls — 2 Pair in Pkg. — Size 6 to 11, Reg. 89c  
**COLORED SOX** 3 for **89¢**  
Foremost Family Style — 1/2-Gal.  
**ICE CREAM** **49¢**  
Foremost  
**SOUR CREAM** Pt. **49¢** 1/2-Pt. **25¢**  
Foremost — All Flavors  
**COTTAGE CHEESE** ea **49¢** Pt. **27¢**

**EXTRA LEAN SWEET SMOKE FLAVOR** **29¢** C lb

**ORANGE JUICE** Full Quart **39¢**  
**ROAST BEEF** 12-oz. Can **39¢**  
**CHOPPED HAM** 12-oz. **49¢**  
**Chicken & Dumplings** 3-lb. **89¢**  
4-oz.

HILLS BROS  
**INSTANT COFFEE** 10-oz. **1.19**  
S&F — 8-oz. 79c  
**INSTANT COFFEE** 10-oz. **1.09**  
GIANT  
**SURF** **59¢**  
**ANIMAL COOKIES** 3 FOR **25¢**

Carters' Antiseptic — 16-oz. Reg. 59c  
**MOUTH WASH** 3 for  
Derby — With Beans — No. 300 Cans  
**CHILI CON CARNE** 4 for  
Derby — 16-oz.  
**CORNED BEEF HASH** 3 for  
Derby — 13-oz. Jars  
**TAMALES** 4 for  
Derby Plain — 15-oz.  
**CHILI CON CARNE** 3 for  
Sacramento Fancy Peach — No. 2 Cans  
**PIE FILLING** 6 for  
Earlans Pieces & Stems — 2-oz.  
**MUSHROOMS** 8 for  
Swift's Strained or Junior  
**HI-MEAT DINNERS** 8 for  
Maine — No. 1/2 Cans  
**SARDINES** 8 for

Bleached — Reg. 39c  
**FLOUR SACKS** 4 for  
Derby — No. 300 Cans  
**TAMALES** 5 for  
Blue Bonnet — 1-lb. Ctns.  
**OLEO** 4 for  
Shady Oak Mushroom — 8-oz.  
**STEAK SAUCE** 12 for  
Borden's — 10 to Can  
**BISCUITS** 12 for  
Cello Pkg. — 24-oz.  
**PRUNES** 3 for  
Fancy Button — 4-oz. — Reg. 49c  
**MUSHROOMS** 3 for  
Men's — One Size Fits All — Reg. 69c Fr.  
**STRETCH SOX** Now 3 pair  
Ladies & Girls' — Size 8-10 — Reg. 99c  
**BERMUDA SHORTS** Now 2 for  
Ladies' — Size 32 to 34 — Reg. 1.99  
**BLOUSES** Now 2 for

**FROZEN FOODS**

Frigid Dough — Reg. 39c  
**MINCE PIES** 5 FOR **1.00**  
Cal-Ida French or Krinkle Cut  
**POTATOES** 9-oz. **10 FOR 1.00**  
Downy Flake  
**PANCAKES** 8 to Pack **8 FOR 1.00**  
Blue Ribbon — 2-oz.  
**BEEF STEAKS** 10 FOR **59¢**  
Feller's Beef or Veal — 11-oz.  
**DINNER STEAKS** 3 FOR **1.00**  
County Fair Strawberry — 25-oz.  
**CREAM PIES** 4 FOR **1.00**  
County Fair Chocolate — 14-oz.  
**CREAM PIES** 3 FOR **1.00**  
Rose Royal — 8 1/2-oz.  
**CHEESE PIES** 4 FOR **1.00**  
XLNT Cheese or Beef — 12-oz.  
**ENCHILADAS** 4 FOR **1.00**

Brea Gold — 8-oz.  
**ORANGE JUICE** 6 FOR **1.00**  
Oscar Chicken, Beef or Turkey — Serves 4  
**MEAT COBBLER** 1-lb., 10-oz. **69¢**  
Tree Top — 12-oz., 3 for 89c  
**APPLE JUICE** 8-oz. **6 FOR 1.00**  
Mama Maria — 16-oz.  
**CHEESE PIZZA** 3 FOR **1.00**  
C-Plus  
**LIMEADE** 8-oz. **12 FOR 1.00**  
Farm Fresh — 16-oz.  
**BOYSENBERRY CAKE** **39¢**  
Banquet — Full Assortment  
**DINNERS** 11-oz. **39¢**  
Cal Fame — 8-oz.  
**LEMON DRINKS** 10 FOR **1.00**  
Trosweet — 8-oz.  
**ORANGE JUICE** 4 FOR **1.00**

Sea-Boy White Meat — No. 1/2 Cans  
**SOLID PACK TUNA** 4 FOR **1.00**  
Vogue Deodorant w/Hexachlorophene  
**BEAUTY SOAP** 5 BARS **25¢**  
BERNSTEIN'S — 8-oz. Bottles  
**DRESSING** 5 FOR **1.00**  
IRIS SPARKLING BEVERAGE — 12-oz.  
**SOFT DRINKS** Reg. 2.40 Case of 24 **1.69**  
L.F.  
**THICK SAUCE** 5-oz. **19¢**

Oscar Mayer — Reg. 59c — 13 1/2-oz.  
With Barbecue Sauce **3 FOR 1.00**  
CHEF'S DELIGHT  
**CHEESE SPREAD** 2-lb. Leaf **69¢**  
ALBER'S  
**FLAPJACK** 4-lb. Pkg. **39¢**  
M.J.B.  
**COFFEE** In 3-lb. Cans Lb. **69¢**  
NO 2 1/2 CANS  
**PEACHES** 5 FOR **1.00**

**JEWELRY & WATCH REPAIR DEPT.**  
Paramount & Lakewood Stores Only  
**SPECIAL WATCH SALE**  
COMPLETE LINE  
**HAMILTON — CROTON TIMEX**  
2 DIAMOND Low **19.95**  
17 JEWEL As **19.95**  
S.S. CASE Low **19.95**  
21 JEWEL As **19.95**  
**ELECTRIC** Low **19.95**  
As **19.95**  
SOLID GOLD Low **34.95**  
17 JEWEL As **34.95**  
BUY NOW FOR GRADUATION & FATHER'S DAY

**LIQUOR DEPT.**  
**FREE 1 ROLL OF KODAK FILM**  
With Each Roll Developed Here.  
• KODACOLOR • BLACK & WHITE  
\* Film Sizes  
120 - 127 - 620 - 35mm (20 Exp.)  
BREWED IN THE EAST  
**PREMIUM BEER** 8 PACK 12-oz. Cans **85¢**  
TOP QUALITY 24 HOUR PHOTO SERVICE

**McCoy's MARKETS**

- DOWNEY 13235 So. Woodruff
- LONG BEACH Anaheim at Cherry 5298 E. 2nd St. 2824 E. Anaheim 4232 E. Anaheim 2290 Santa Fe Blvd. 4100 Orange Ave. 2056 Pacific Ave.
- HOLLYDALE 12222 Garfield Ave.

PRICES EFFECTIVE AT ALL MCCOY'S MARKETS