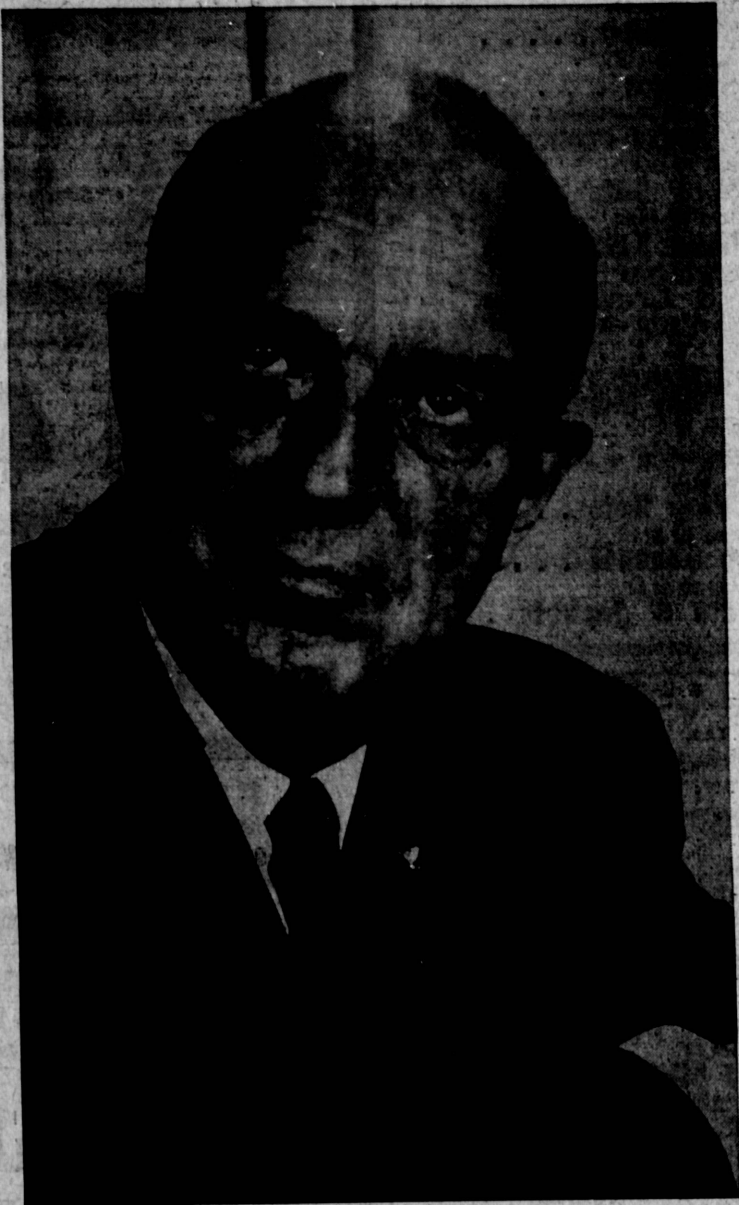


RE-ELECT

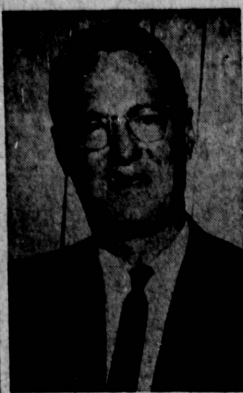


Charles Edward Chapel

Republican Member of the Assembly, 46th District, California State Legislature, who has faithfully and effectively represented the 46th District continuously for almost fourteen (14) years. Assemblyman Chapel was first elected in November 1950; was given the oath of office on the first Monday in January, 1951. On the first Monday in January, 1965, he will have completed fourteen years of unbroken service to his District and the State of California. Based on past election records, it is very probable that he will once more take the oath of office as a Member of the Assembly on Monday, January 4, 1965, for another two-year term.

MEMBER OF ASSEMBLY, 46th DISTRICT (Vote for One)

Charles Edward Chapel, Republican Member
of Assembly 46th District, Calif. Legislature



J. P. BECKER
Back in Torrance

Busy Civic Leader Back In Torrance

James P. Becker, active in Torrance community affairs for several years, has been returned as manager of the Southern California Gas Co. office here.

Becker, who resides at 19309 Entradero Ave., has served two terms as president of the Torrance Dental Health Assn.; was chairman of the Torrance Civic Center Promotion Committee; chairman of the Community Chest campaign for the Harbor Area; director of the Torrance and the Lomita Chambers of Commerce, and director of the Executive Dinner Club.

Becker was returned to Torrance to succeed E. J. Gregory Jr., who has been assigned to the company's advertising department in Los Angeles. Gregory was assigned here in 1960 when Becker was given a temporary assignment in the firm's headquarters personnel department in Los Angeles.

A native of Missouri, Becker joined the utility shortly after World War II, and in 1954 was named to head the firm's Huntington Park office. He was sent to Torrance in 1957 where he served until 1960.

Honest criticism and sensitive appreciation are directed not upon the post but upon the poetry.
—T. S. Eliot



Charles Coderf, Manager, Glendale Federal Savings, Torrance Office

Here's how you build an area like the South Bay

Were you aware that your savings account at Glendale Federal is an important factor in the growth of your area? The PREMIUM Home Loans we make to help this area grow represent your savings dollars—and your neighbors'—making a real contribution to the growth and prosperity of your community in the booming South Bay.

And at the same time, you are contributing to your own personal prosperity. At Glendale Federal your savings earn 35% more than they would in a comparably insured bank savings account. (That's why you so often hear us say "you need both... a bank checking account, plus a Glendale Federal savings account.")

And you accomplish all these things with the assurance that your savings are safe and secure. Not only is your account insured to \$10,000 by an agency of the United States government, but you also receive all the safety benefits which result from our being a federally chartered association... further assurance of responsibility, dependability and community service.

If you don't already have a savings account at Glendale Federal, drop in and see us today. Start building... for yourself and the South Bay.

TORRANCE OFFICE
3832 Sepulveda Blvd.
378-8351

State Office in Glendale

Earnings Paid 4 Times A Year

Accounts opened by the
15th of any month earn from the 1st
Savings Accounts Insured to \$10,000



A HALF-BILLION DOLLAR FEDERALLY
CHARTERED FINANCIAL INSTITUTION

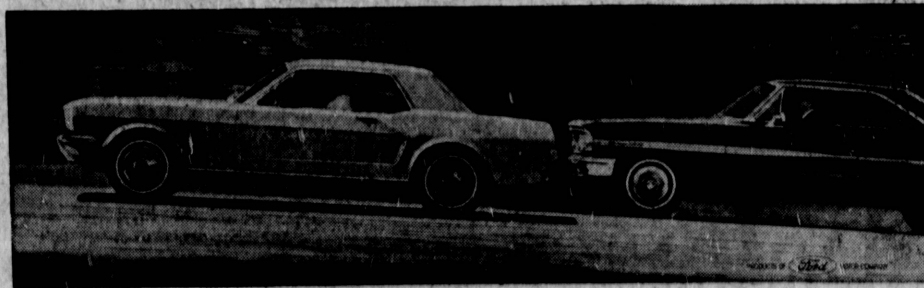


Mustang leads the stampede the big Ford started. This has been the hottest sales year in Ford Division history. We have a winner in the Super Torque Ford, a car so well built, so predictably tough, that competition-modified Fords took eleven of the last twelve NASCAR 500-mile races. Ford sales are up 17% this year. We have a luxury car that's taken off like a skyrocket: Thunderbird, with sales up 64%. Falcon is selling almost as many cars as Valiant and Chevy II combined. Fairlane continues to be a favorite in its own field. Now comes Mustang... turning the trend to Ford into a downright stampede. Mustang, by any measure of sales or excitement, is the most successful new car ever introduced in America—ever. When you see a stampede, it makes sense to find out what started it. That's something only your Ford Dealer can tell you about.

TRY TOTAL PERFORMANCE
FOR A CHANGE!

FORD

Mustang • Falcon • Fairlane • Ford • Thunderbird



SEE AND TEST-DRIVE THE TOTAL PERFORMANCE
CARS AT YOUR FORD DEALER'S

SEE THE MUSTANG AND EME WALT DISNEY'S MAGIC SKYWAY AT THE FORD MOTOR COMPANY'S WONDER ROTUNDA, NEW YORK WORLD'S FAIR