



# USDA "CHOICE" STEER BEEF SALE

## STOCK UP ON THESE LOW, LOW CHOICE BEEF CUTS

We Give  
**BLUE CHIP STAMPS**



TENDER—TASTY—SAVE 30¢ A POUND

**CHUCK STEAK** LB. **39¢**

TENDER—JUICY—BONELESS STEAKS

**TOP SIRLOIN** LB. **\$1<sup>19</sup>**

SMALL SIZE—TENDER—TASTY  
**RIB STEAK**  
YOU SAVE 29¢ A POUND!  
LB. **69¢**

**T-BONE STEAKS**  
**PORTERHOUSE STEAKS**  
**CHUCK ROAST**

TENDER AND JUICY. SAVE 60¢ A POUND!

LB. **89¢**

TENDER, JUICY SAVE 54¢ A LB.

LB. **95¢**

TENDER, JUICY, BLADE CUT. SAVE 30¢ A POUND!

LB. **29¢**

**ROUND STEAK** FULL CUT, BONE IN LB. **65¢**  
**SWISS STEAK** THICK CUT, BONE IN LB. **59¢**  
**SPENCER Steak** BONELESS LB. **\$1<sup>49</sup>**  
**SIRLOIN TIP** BONELESS, TENDER AND JUICY LB. **89¢**  
**N.Y. STRIPPER** BONELESS STEAK LB. **\$1<sup>79</sup>**

**CUBE STEAK** BONELESS, TENDER AND LEAN LB. **89¢**  
**FAMILY STEAK** BONELESS, TENDER LB. **79¢**  
**RUMP ROAST** TENDER, JUICY, BONE IN LB. **69¢**  
**BEEF ROAST** ENGLISH CUT TENDER & JUICY LB. **69¢**  
**FILET MIGNON** BONELESS, WHOLE, TENDER AND JUICY LB. **\$1<sup>69</sup>**

USDA "CHOICE"  
**CLUB STEAK**  
TENDER, JUICY  
LB. **79¢**

BOYS  
**SALAD**

**OIL**  
SAVE 8¢  
24-OZ. BTL.

**23¢**

FINEST QUALITY  
**DARI GOLD BUTTER**  
1-LB. PACKAGE

**67¢**

**MORTON FROZEN DINNERS**  
ALL VARIETIES  
SAVE 10¢

Complete Dinner **39¢**

TROPICAL  
**PANCAKE AND WAFFLE SYRUP**  
26-OZ. BTL.

**25¢**



SWEET AND RIPE

**TOMATOES**  
FIRM RIPE SLICING  
LB. **29¢**

**HAWAIIAN PINEAPPLES**

LB. **10¢**

**CUCUMBERS**

FRESH-PICKED, LONG, GREEN  
LB. **10¢**

**FROZEN FOODS**

GARNET **GRAPE JUICE** 6 4-OZ. CANS **\$1**  
OH BOY Cheese 9 3/4-OZ. **39¢**  
PIZZA Pepperoni 9 3/4-OZ. **49¢**  
WONG'S **DINNERS** All Varieties EACH **49¢**  
CERTI-FRESH **FISH STICKS** 3 8-OZ. PKGS. **\$1**

**SALVO DETERGENT TABS**

Price includes 10¢ off label.  
**GIANT BOX 59¢**

**SAFFLOWER MARGARINE** HOLLYWOOD 1-LB. CTN. **35¢**  
**GREEN OLIVES** SAN FERNANDO 4 9-OZ. JARS **\$1**  
**INSTANT POTATOES** GOLD LABEL 6 1/4-OZ. PKG. **19¢**  
**ERLAND MUSHROOMS** STEMS & PIECES 4 4-OZ. CANS **\$1**  
**PUREX BLEACH** IN PLASTIC BOTTLE HALF GALLON **39¢**  
**LILY PINK SALMON** NO. 1 TALL CAN **59¢**  
**SLICED PINEAPPLE** ISLAND SUN NO. 2 CAN **25¢**  
**ELBERTA PEACHES** SUN DRENCHED 3 NO. 2 1/2 CANS **87¢**  
**VETS DOG FOOD** 12 NO. 1 TALL CANS **\$1**

TOWNE HOUSE  
**FACIAL TISSUE**  
300-CT. BOXES

**2 FOR 25¢**

C.H.B.  
**JAMS & JELLIES**

2-LB. JAR **49¢**

\* Strawberry • Peach • Peach-Pineapple • Apricot • Apricot-Pineapple • Grape

IN OUR DELICATESSEN DEPARTMENT

**GRAND TASTE WIENERS**

TENDER AND JUICY  
1-LB. PKG. **39¢**

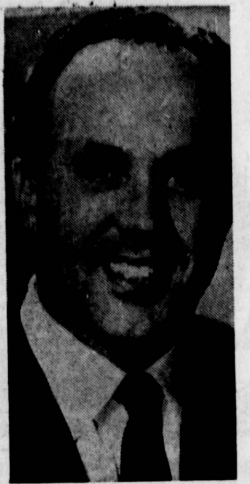
DANOLA/SLICED/IMPORTED  
**DANISH HAM**..... 5-OZ. PKG. **65¢**

HILLS BROS.  
**COFFEE**

1-LB. CAN ..... **83¢**  
2-LB. CAN ..... **\$1<sup>65</sup>**  
3-LB. CAN ..... **\$2<sup>39</sup>**  
4-OZ. INSTANT ..... **\$1<sup>35</sup>**  
ABC SUGAR WAFERS 14 OZ. **49¢**  
SUNSHINE COOKIES 16 OZ. **49¢**  
HYDROX

**NORTHERN TOILET TISSUE**  
4 ROLL PAK **39¢**

AD GOOD  
7 FULL DAYS  
THURSDAY  
MAY 21  
thru  
WEDNESDAY  
MAY 27  
1964



SERIES SET . . . The Rev. Dr. Jack MacArthur will be among guest speakers at the First Baptist Church of El Nido, 4558 W. 182nd St., during a Bible preaching conference beginning Sunday morning and continuing each week night at 7:30 through Friday, May 29. Dr. MacArthur will speak on Thursday night, May 28. Special music and other programs of interest are being planned for each service, according to the Rev. Leland Pisel, pastor of the church. A nursery will be provided.

### Youth Band Anniversary Concert Set

The Torrance Area Youth Band, under the direction of James Van Dyck, will present the anniversary concert in the Torrance Recreation Center Sunday at 4 p.m.

The program will include: "Nabucco" overture by Verdi; "Pageantry" by Robert Washburn; "El Torero" by Giovanni; and "Water Music Suite," Handel.

Also programmed are selections from "The Music Man" by Meredith Willson and "West Side Story" by Leonard Bernstein. The concert will conclude with the "Irish Washerwoman" from Leroy Anderson's "Irish Suite."

This will mark the 19th season of continuous music activity sponsored by the band parents organization and the City of Torrance.

### Housing Law Subject of Last Debate

"Fair or Forced Housing?" an examination of the Rumford Fair Housing Law, will be the final debate in the "Explorations into Controversy" series at North High School.

The debate, under the sponsorship of South Bay Forum, Inc., will be held Thursday, May 28, at 8 p.m. in the North High cafeteria.

Participants in the debate will include Tom Carvey, president of the California Democratic Council and Reg Dupuy, legislative chairman of the California Real Estate Assn.

James Barrett, president of the South Bay Bar Assn., will be moderator for the evening. Tickets for the debate are \$1.50 for adults and \$1 for students.

### Future Events Announced by Republicans

Two political events have been announced by the Harbor Area Republican Club.

Dr. Robert Vance will discuss the missile program history and interpret questions concerning the alleged "missile gap" at the Harbor Area Republican Headquarters, 414 W. Seventh St., San Pedro, May 25 at 8 p.m. Dr. Vance is an expert in the field of cryogenics.

Ronald Reagan, motion picture and television star, will speak on government waste and the trend toward socialism May 29, at 8 p.m., at Miraleste School.

If you are one of the estimated five million Americans with high blood pressure, your Los Angeles County Heart Assn. reminds you that your physician can help you keep it under control.

IN LOS ANGELES SHOP AT:

- 120th and Vermont
- \* Crenshaw and Rodeo
- Vermont and Slauson
- Pico and Arapahoe
- 47th and Broadway
- Florence and Figueroa
- Manchester and Western

OTHER BOYS MARKETS IN SOUTHERN CALIFORNIA

- \* COMPTON, Willowbrook and Palmer
- DOWNEY, 12270 Paramount
- FULLERTON, N. Raymond and Commonwealth
- GARDENA, Redondo Beach and Van Ness
- HAWTHORNE, 118th St. and Hawthorne
- LA MIRADA, Imperial and Luitpold
- \* HIGHLAND PARK, Ave. 56 and Monte Vista
- LAKEWOOD, Lakewood Center
- LONG BEACH, 3750 E. Anaheim
- \* MONTEBELLO, Beverly and Wilcox
- \* NORWALK, Pioneer and Alondra
- \* POMONA, Holt and Indian Hill
- REDONDO, Manhattan Beach and Inglewood
- \* SAN FERNANDO, Glen Oaks and Hubbard
- SAN GABRIEL, Valley and Del Mar
- TORRANCE, Normandie and Carson
- WILMINGTON, Avalon and Anaheim

\* NOTE: COMPLETE PHARMACY WITH PRESCRIPTION SPECIALISTS AT STORES MARKED \*