

# Active Builder Full of Praise For This Area

Energetic Dick Meine, president of the Meine Construction Co. at 23639 Arlington Ave., has been actively involved in South Bay real estate development since 1948.

An ardent surfer—Hawaiian style in the winter time — Meine lives in Palos Verdes Estates with his wife, Pat, and three daughters, Marla, Janie, and Judy who are 5, 16, and 18 years old. He was born in Los Angeles and attended UCLA, majoring in business administration. He currently is on the board of directors of the Home Builders Association of Los Angeles, Ventura and Orange Counties, and is a member of the Palos Verdes Country Club, and the Torrance Chamber of Commerce.

AMONG THE projects in the Torrance area which bear the Meine stamp is the Skyline Mobile Park on Pacific Coast Highway near Crenshaw. This 173-unit trailer development was built in joint venture with the Mertz Bros. Cabrilowood, a two-story residential development in the Torrance area and Carson Village at 218th Streets and Martin in Torrance are virtually completed and ready for occupancy.

In the offing is an eight-home community across the street from Lomita Park which is called "Del Campo."

IN ADDITION, Meine, in partnership with the Ray Watt Construction Co., built the handsome new 600-unit condominium apartment-homes in Torrance called "New Horizons." He has done extensive building from Santa Barbara to San Diego as well.

"I enjoy living and working in the Torrance area," Meine said. "The people are friendly and forward-looking, and the climate is nearly perfect. The home-building business brings me in contact with people, and permits me to spend a great deal of my time out-of-doors. That's a major source of satisfaction."



**PROMINENT BUILDER . . .** Living in the Torrance area suits home builder Richard Meine right down to his toes. Climate is right, people are great, and the ocean's right next door for year-round surfing, his favorite sport. The builder has been active with many notable Torrance construction projects, including New Horizons, Cabrilowood, and the Skyline Mobile Park. He currently is completing an 80-home development called "Del Campo" at Walnut and 245th.

# Torrance Home of One of West's Most Important Chemical Plants

Torrance is the home of one of the west's most important chemical plants. The plant, located on a 54-acre site at 305 Crenshaw Blvd., is operated by

The Dow Chemical Co. Dow, the nation's fourth largest Chemical company, built the plant in 1953. Since that time a major portion of the plastic raw materials used by industries throughout the west have been produced at the Torrance facility.

The plant's production facilities have been expanded steadily by Dow during the past 11 years. Today it employs 130 people.

**THE PLANT**, headed by D. W. Ryan, was originally built to produce styrene materials, key ingredients for most plastic products made by industry. Later, its facilities were expanded to produce a number of other materials related to the styrene chemical family. Some of these products are marketed by Dow directly to the construction industry.

One of them is Styrofoam, a lightweight plastic foam material that is widely used in the west for building insulation and other purposes.

**ANOTHER PRODUCT** which the plant produces for the construction industry in the west is Roofmate, for insulating built-up roofs.

Styron products, a family of Dow thermoplastic molding materials made from styrene, are also now being produced at the plant.

In addition to styrene compounds and materials, Dow's Torrance plant recently began producing polypropylene, after completing a multi-million dollar plant expansion. Polypropylene is used in the production of many new plastic molded materials. These materials are used for automotive parts and fixtures, housewares and other plastic products.

**THE TORRANCE** facility is also the home of a plastics materials technical service and development group for Dow. This group of scientists and technicians work closely in the production of plastic materials. The Torrance plant is one of three operated in California by Dow's Western Division.

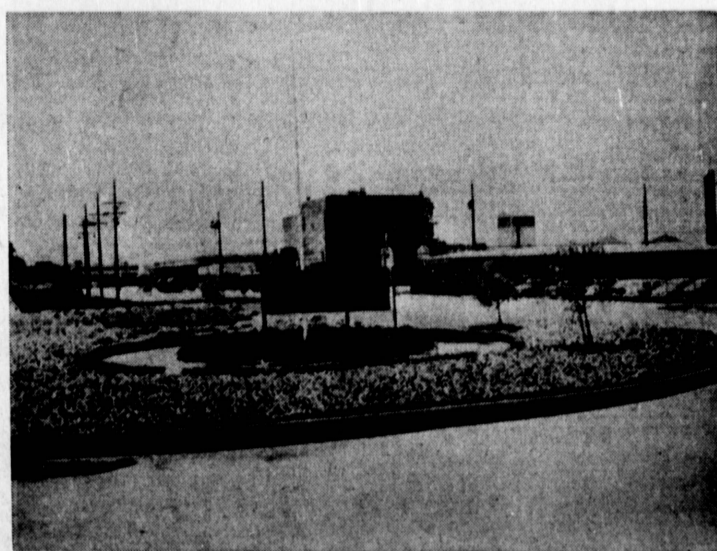
Other western Division plants are located at Seal Beach and Pittsburg, Calif. Major research facilities are also located at Walnut Creek, Pittsburg, Davis and Seal Beach.

**OTHER DIVISIONS** of Dow operate plants in Fresno.

Dow's corporate headquarters is in Midland, Mich., where the company's founder, the late H. H. Dow, developed a new method to produce bromine from salt brines shortly before the turn of the century.

Today the company produces more than 800 products for home and industry. They include general and agricultural chemicals, plastics, metals, pharmaceuticals, and textiles.

The company and its subsidiaries have production plants in 18 states and 26 foreign countries.



**SERVING THE WEST . . .** by producing plastic materials, is the Dow Chemical Company's 54-acre Torrance production plant. The 11-year-old plant now supplies a major portion of western industry's needs for plastic raw materials.

## Dow Congratulates Torrance Herald

The Dow Chemical Company extends its congratulations and best wishes to the Torrance Herald for its 50 years of service to the Torrance area.

The half century has been characterized by significant growth of Torrance as a vital member of the industrial community in Southern California

Dow is proud to have shared in this progress.



## THE DOW CHEMICAL COMPANY

Western Division  
Torrance, California

# COME ON OUT TO CABRILLOWOOD AND WATCH US BUILD YOUR HOUSE!



It takes a heap of steel, concrete and wood, plus a lot of enthusiastic man-power to put a Meine-built home together.

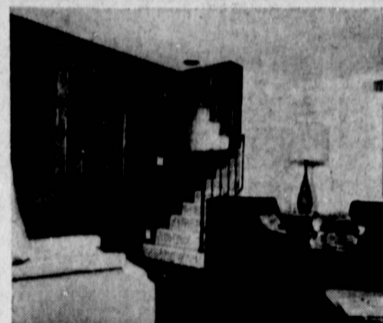
We think building a home is exciting. We love the sweet clean smell of pine and fir, the solid look of freshly laid cement . . . and all the zesty clamor and commotion is music to our ears. Watching your home go up is part of the fun, so come on out and see what we're doing.

You'll find us busily laying flawless high dry-wood floors . . . installing rich, beautiful nylon carpeting . . . and putting up rough-sawn wood siding on these very carefully constructed 3, 4 and 5 bedroom homes. You'll explore refreshing extras you usually associate with custom-built homes . . . like private dining rooms, completely private recreation rooms and Waste King Built-Ins designed to last a lifetime.

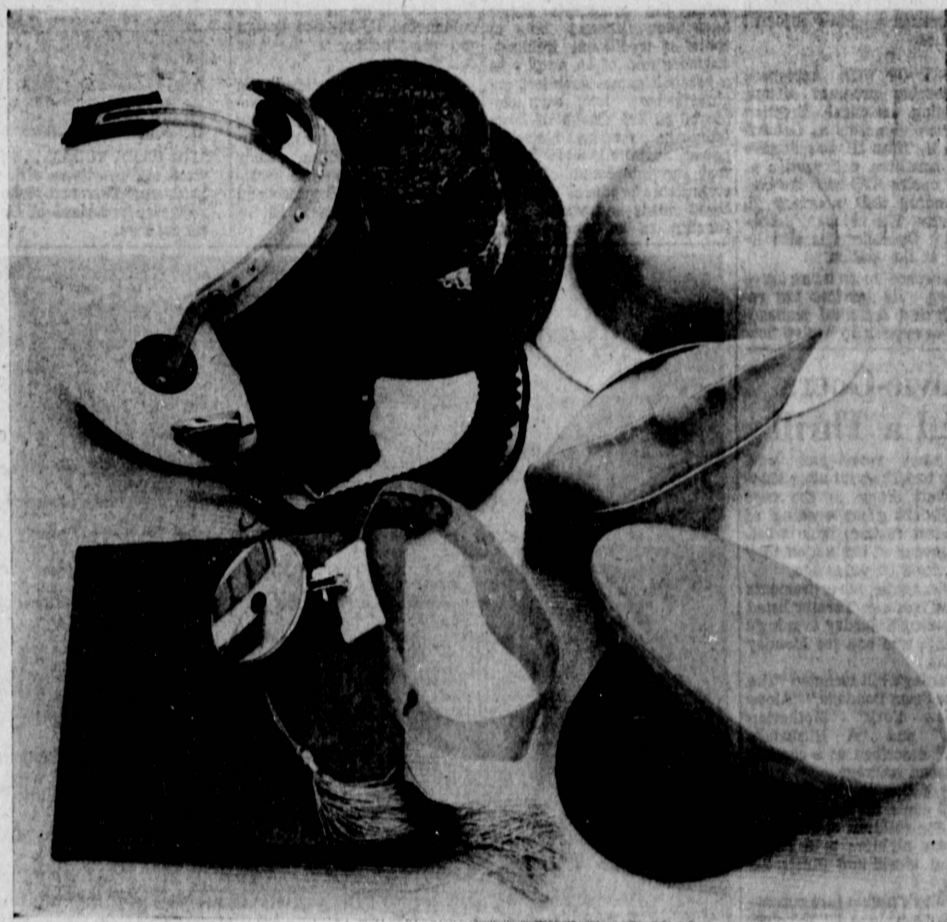
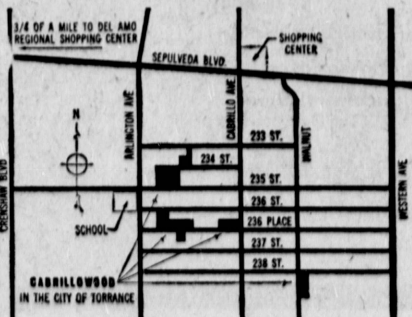
So come on out, wherever your new home-buyers are, and let us personally show you a home we're proud to build and you'll be proud to own!

SALES OFFICE ADDRESS:

**MEINE**  
CONSTRUCTION COMPANY  
2131 - 235th Street,  
Torrance, California  
OR CALL DA 6-9709



And when construction is complete, you'll do a lot of enthusiastic living in your beautiful new Meine-built home.



## Our customers wear many hats . . .

But their heads are very much alike. Whether they're in the military service or a small business, our customers are smart managers. They've learned that Associated Aero's computer center can bring cost-saving automation to their front doors, solving accounting snarls, payroll vexations, billing problems, inventory workloads and complex cost analyses. Maybe we can help you in one of these ways:

- We'll pick up your accounting work, set it up for

automated solving, handle it through our IBM center, and bring you the answers, ready to use.

- We'll provide your trained personnel with the equipment, for their use at our facility.
  - We'll train your personnel in our latest IBM equipment, so you can work out your own solutions at low rental rates.
- Worth learning more? Phone us at 775-2766 or 325-5742.



ASSOCIATED AERO SCIENCE LABORATORIES, INC.  
2430 AMSLER STREET, TORRANCE, CALIFORNIA