

Families Inspect Hi-Shear Projects

Hi-Shear Corporation welcomed more than 700 employees, family members, and guests to its seventh Family Day in mid-April. Hi-Shear management, headed by George S. Wing, is proud that its employees and their guests have been able to see the company grow and progress over the years.

This growth has been typified by plant, personnel and product line expansion. Through periodic tours of the laboratories, office, shops, and product display areas both employees and guests have obtained a current understanding of company products, operations, and aims.

Designers and manufacturers of precision aerospace and marine fastening devices and ordnance systems, Hi-Shear Corp. has expanded from a two-man business in 1943 to its present 495 employees in a modern plant. A South Bay community business since it began operations, Wing, inventor of the Hi-Shear Rivet, and Allan J. Kirk, the founding partners, are president and executive vice president respectively. During their first year of operation, net sales totaled \$41,000 and in their twentieth year of operation sales reached over 7 million dollars for the fiscal year ending Feb. 29, 1964. This was the greatest sales volume in the company's history.

INITIALLY THE company, known as Hi-Shear Rivet Tool Co., produced Hi-Shear rivets and installation tools in a small shop adjoining a gas station on Pier Avenue, Hermosa Beach. When demands for Hi-Shear products grew in the early 1950's, the company was relocated in expanded quarters north of the Los Angeles International Airport. Expanding with new products and increasing sales, the original company was changed from a partnership to a California corporation in 1955. The following year it

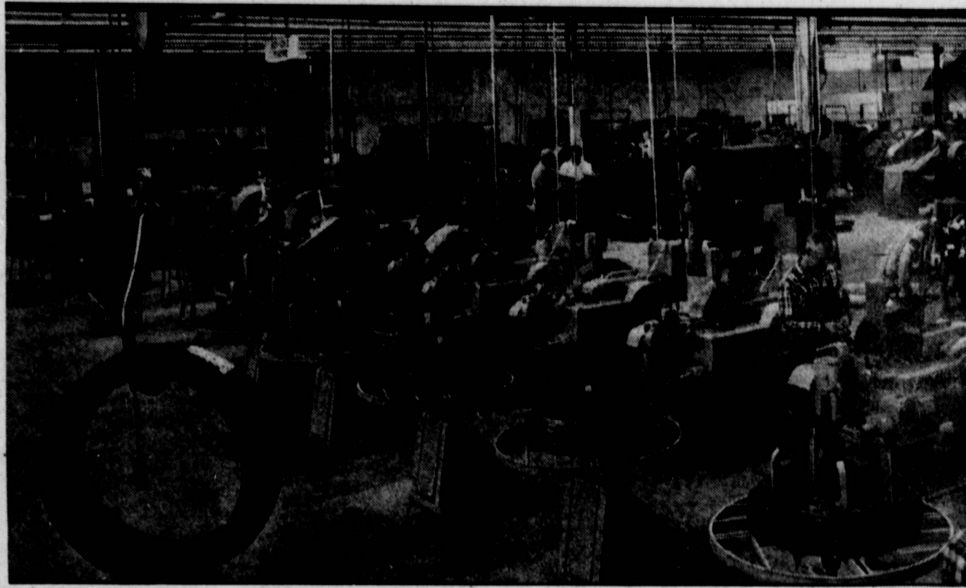
acquired its present 18-acre site on the Torrance Municipal Airport.

Here a building and growth program has continued with present facilities consisting of general offices and factory; metallurgical, physical and ordnance test laboratories; heat treat and plating facilities; and assembly and engineering areas occupying 137,800 square feet. In 1960 the company name was changed to Hi-Shear Corp. to better describe its more diversified product line.

HI-SHEAR Corp's variety of precision structural fasteners are used in nearly all United States commercially manufactured airliners. Additionally, they are employed in the McDonnell Phantom F4B tri-service fighter, the Lockheed C-141 Starlifter, Republic Thunderchief F-105 fighter, the Northrop T-38 trainer and F-5A NATO fighter, and the North American X-15 research rocket ship, to name a few. At sea in U. S. Naval missiles and ships, Hi-Shear systems provide fastener strength for primary structures on surface vessels and deep-dwelling submarines.

Hi-Shear explosively actuated unfastening devices separate missile stages, release nose cones, eject aircraft stores, and release missiles from their launching pads. Both ordnance and fastener systems are currently in use in Atlas, Titan, and Apollo missiles for defense and space exploration. They will be aboard the Surveyor and LEM moon exploratory vehicles. Future uses for Hi-Shear products will be in the TFX tactical fighter and the Douglas DC-9 medium-range transport.

Other company officers and officials are Albert E. Anderson, vice president-manufacturing; Guy Nash, vice president—Sales; James C. Rome, controller; William Halpern, secretary and legal counsel; Vene L. Darby, chief engineer; John Bingham, manager—quality assurance; and Sterling Souder, purchasing agent.



BUSY SCENE . . . One of the two banks of "Headers" where Hi-Shear fasteners begin their trip through Hi-Shear production facilities. These machines cut prescribed lengths from the coils of wire and form the head on such products as Hi-Shear Rivets.



NEWEST TORRANCE MORTUARY . . . Niland's Torrance Mortuary at 5310 Torrance Blvd. opening last fall to offer expanded service to the Torrance and South Bay areas it has served since it was established in 1922 by William F. Niland. The mortuary is the second of the Niland's facilities.

It is under the management of Billyanna Niland, Mr. and Mrs. Richard G. Cox, William Steinleitner, and William Harkins. The new facilities provide accommodations for 130 persons in the chapel, and secondary chapels seating 15 to 20 persons.

NILAND'S
Torrance Mortuary
5310 Torrance Boulevard
Torrance • 370-4533 or FR 2-6291

The Niland Family Has Served the South Bay Communities Since 1922

In Redondo Beach:
NILAND MORTUARY

535 North Pacific Coast Highway
Phone FRontier 2-6291



NATIVITY CATHOLIC CHURCH 1921-1964



SUNDAY MASSES

6-7-8-9
10-11 and 12:15

DAILY MASSES

6:00 and 8:00 A.M.

HOLY DAYS MASSES

6-7-8-9 A.M.
12:10, 6:00 and 7:30 P.M.



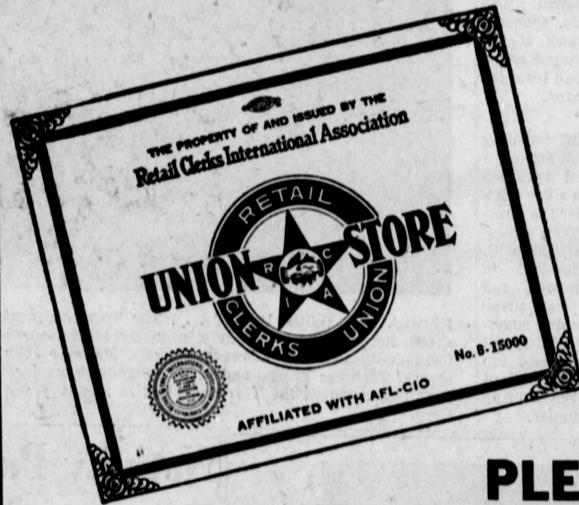
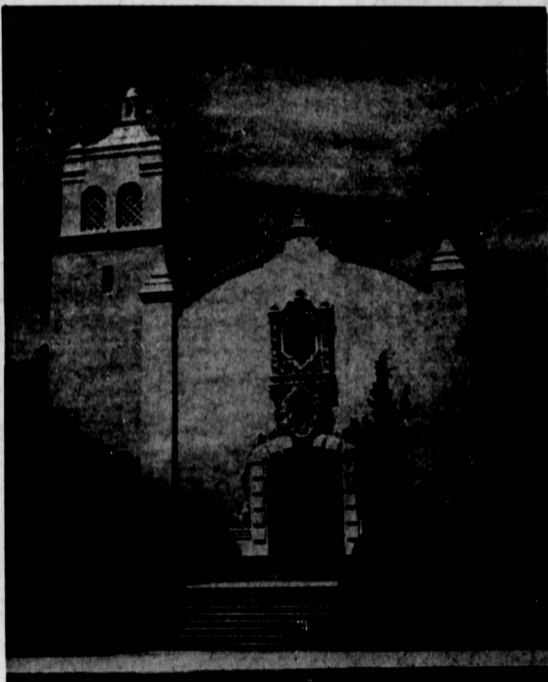
Corner Engracia & Cota

Phone FA 8-2776

Rev. John P. Cremins

Rev. William Appling

Rev. William P. O'Toole



PLEASE SHOP HERE WHERE YOU SEE THIS SIGN DISPLAYED

BUILD YOUR COMMUNITY!
SHOP WHERE YOU SEE THE UNION CARD

- The highest form of citizen endeavor is to be registered and to vote at all times on all candidates and issues. Intelligent, active interest in government creates balance and maintains freedom.
- A "picket line" is somebody's sacrifice for something they hold dear. No decent American knowingly violates a sanctioned AFL-CIO picket line. A balance between labor and business maintains freedom and a picket line is the only lawful way a working person can fight for a decent, American standard of living.
- If you believe in Freedom — Register and Vote!
- If you believe in the American standard of living, buy only from UNION SALES PEOPLE! Look for the Union Button!

RETAIL CLERKS INTERNATIONAL ASSOCIATION LOCAL 905 AFL-CIO

25949 Belle Porte, Harbor City, California
"Serving The Los Angeles-Harbor Area"