

At Monteverde

Spain's Charm Reflected in Newest Models

Commanding a view of the Pacific Ocean on the southern slopes of the Palos Verdes Hills, the newest of three display homes in the Monte Verde homesite development has opened to the public.

Designed to reflect the centuries of Spanish influence in Southern California, the Pueblo home features stone textured walls accented by room dividers of terra cotta tile. Iron-pegged paneled doors and large areas of glass lead to the inner courtyard.

Architects Smith and Williams designed the home, and Paula Williams decorated it. The house features a background of earthen colors contrasted by an occasional wall of brilliant felt. Fabrics throughout the home are hand-woven and contemporary furniture is complemented with antique Spanish treasures.

AN ALL-ELECTRIC kitchen features an unusual selection of built-ins, including a freezer conveniently located in the pantry and bar area. Landscaping was done under the direction of Eckbo, Deab, and Williams.

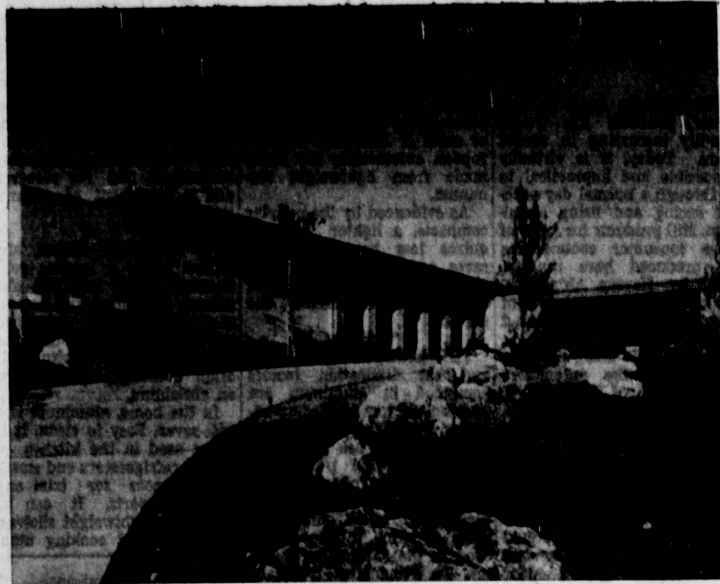
Developed by Palos Verdes Properties, Monte Verde offers some of the choicest remaining property on the Peninsula. Prestige homesites enjoy spectacular views stretching from Malibu to Catalina Island. All of the homesites also overlook the new Los Verdes Golf Course.

According to the developers, great care has been taken to preserve the natural contour of the land. Telephone, television, and Edison lines are

pipied underground to each site. All improvements, including sewers, street lighting, and landscaping are in and paid for.

ARCHITECTURAL control protects the character of the development. Homesites average 15,000 square feet, and are priced from \$19,500.

In addition to the Pueblo model, Monte Verde features a second contemporary Spanish model designed by J. Merrill Gray with interiors by Casey Gray, and a dramatic home designed by Gallion and Wuesthoff with interiors by David Davis of Curt Wagner. Both are balanced power homes.



TASTEFUL ELEGANCE . . . Striking modern lines and a trace of Spanish architecture keynote the exterior design of this home in the new Monte Verde development at Crest Road and Hawthorne Boulevard. The home overlooks the new Los Verdes Golf Course and commands a view of the Pacific Ocean and the southwestern section of Los Angeles County.



SPANISH FLAVOR . . . Reflecting the centuries of Spanish heritage of the area, the interiors of this Monte Verde home was designed by Casey Gray to remind residents of the simpler times. Three homes are open to the public at the Monte Verde development, Crest Road and Hawthorne Boulevard atop the Palos Verdes Hills.

City's Founder Descended from Pioneer Family

A man whose great-grandfather came to America before the signing of the Declaration of Independence has given his name to the city which now ranks as the fourth largest in Los Angeles County, and one of the top dozen cities of California.

Jared Sidney Torrance, who was to buy the original Torrance town site and begin development here in 1911, was born in Gowanda, N.Y., on Aug. 3, 1852. His father, Cyrenius Chapen, was a former attorney for the Seneca Indian nation, and a district attorney for Erie County New York.

THE TORRANCE family had its beginning in America in

1754 when Robert Torrance, the great-grandfather of this city's founder, came to America from Mayoghle, County Derry, Ireland. He located first at Woodbury, Conn., and later at Middlebury, Vt.

Mr. Torrance and his wife, the former Lucy Peck, had two sons. The eldest was Robert, one of Ethan Allen's "Green Mountain Boys" during the American Revolution and the French and Indian wars.

The couple's second son, Styles, settled in western New York and established a large woolen mill near Buffalo. His son, Cyrenius Chapin Torrance, was to become the father of Jared Sidney Torrance. It was Cyrenius Torrance who served

the Seneca Indian nation as an attorney, and served Erie County as its district attorney.

IT WAS A matter of health that brought the Torrance name to California.

Following his graduation from the Sheffield Scientific School of Yale University with a bachelor of philosophy in 1875, Jared Torrance moved into the business world as a lumberman, realty operator, and banker. Failing health forced him to seek more favorable climate, however, and in 1887 he settled in Pasadena, where he immediately became active in real estate and development, and was responsible

for the establishment of the city's first electric lighting system.

An extremely active man, Mr. Torrance was an officer or director of more than 140 corporations in such fields as education, industry, land development, cattle, oil, electricity, transportation, banking, bonds, agriculture, and public utilities.

AMONG HIS chief interests were the Union Oil Co. of California; the Edison Electric Co. (of which he was vice president), Palomar Land and Cattle Co. (owner of 2 million acres of grazing land in northern Mexico), and firms still familiar today such as the Domin-

guez Land Co., the Southwest Museum, Barlow Sanitarium Assn., McKinley Home for Boys, and the Los Angeles Public Market.

Of the more than 140 corporations he was affiliated with, more than 100 were capitalized at \$1 million or more.

IN ADDITION to his business affiliations, Mr. Torrance was active in affairs of the Valley Hunt Club of Pasadena, the California Club of Los Angeles, the Los Angeles Chamber of Commerce, and in his many philanthropic works, many of them unrecorded. Politically, he preferred to be known as an independent.

Mr. Torrance married Annie Laurie Fowler of Oakland in 1889, and to them were born two sons. Mrs. Torrance died in 1893, and he remarried in 1914, marrying Helena Hedy of San Francisco.

Mr. Torrance died at his South Pasadena home on March 29, 1921, leaving an estate valued in probate court at nearly \$3 million. Among his many bequests was funds for establishment of Jared Sidney Torrance Memorial Hospital.

Sunday School Event Cited

The Sunday School of the First Presbyterian Church of Torrance held a Christmas Tree service at the Church on Christmas Eve, the Torrance Herald reported in its first issue on Jan. 1, 1914.

The pastor (not identified) delivered an address and the

group sang songs and exchanged recitations, the item reported.

"A very happy evening was passed and all returned to their homes well pleased with the Christmas tree and the entertainment," the story concluded.



The choicest site for fine homes on the Palos Verdes Peninsula

Here in the heart of the once prized Spanish land grant, Rancho Palos Verdes, Monte Verde offers prestige homesites with panoramic views that stretch from Catalina Island to the Malibu Coast—that border the magnificent 18 hole Los Verdes Golf Course. Meticulous attention has been given to every detail in this development. In all cases the natural contour of the land has been maintained—and has been enhanced by Southern California's foremost landscape architects. All utilities have been

placed underground. And importantly, architectural controls protect every investment. Those preparing to build will find that Monte Verde offers a unique environment for living, close to the city in minutes, but a million miles away in spirit. Sophisticated investors realize Monte Verde is an extremely sound investment. Completely improved homesites are priced from \$18,500. Smog-free Monte Verde is only 35 minutes from downtown Los Angeles via the Harbor Freeway.