

Gas Company Near Birthday, Too

As the Torrance Herald celebrates five decades of community service, the Southern California Gas Company is preparing for an extra special birthday as well.

The nation's largest distributor of natural gas will have its centennial observance in 1967, indicating that the in-

vestor-owned utility has been aiding homeowners here for a long time.

Part of the firm's Southwest Division, Torrance is one of the focal points of the Gas Company's operations.

Indicating the tremendous growth of this region are statistics released by Georg M. Babbe, manager of the Southwest Division, with headquarters in Inglewood.

"WE NOW HAVE more than 200,000 meters, many of which are here in Torrance, serving South Bay and Centinela Valley homes," Babbe said.

The Division's meter count

makes it one of the largest in Southern California Gas Company's territory which stretches from the central portion of the state down to the Mexican border.

With growing emphasis on home-centered activities, the Gas Company points with pride on how it benefits the local population.

SERVICEMEN are as near as the telephone and Home Service Staff members are available for consultation in operating gas appliances. They also provide recipes and cooking hints.

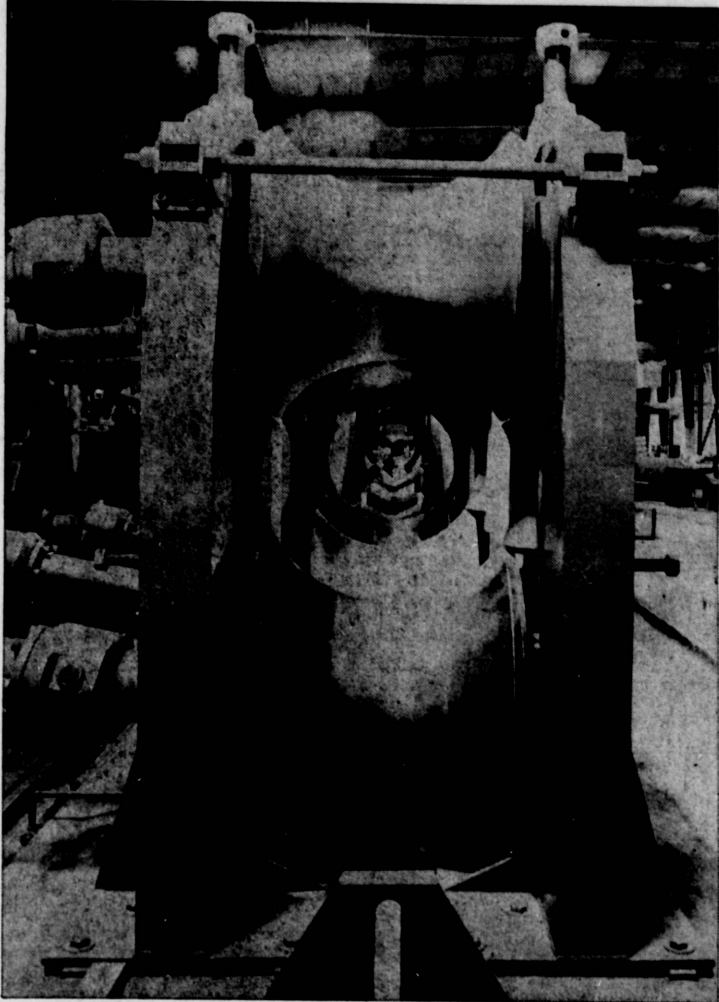
Balanced Power Homes, those using modern and economical natural gas and electricity to perform the jobs each does best, are numerous in this area. Natural gas is used to heat homes, provide hot water and to prepare the best in cuisine on gas ranges and in contemporary ovens.

The natural gas story is unending, one which is advancing as each month comes and goes, according to J. P. Becker, manager of the Torrance office of the utility.

"WE ARE heating pools by natural gas, now have barbecues which use natural gas, and keep busy installing the widely accepted and used outdoor heaters and gas lights," Becker noted at the firm's 1340 Post Ave. location.

Both Babbe and Becker are strong advocates of the phrase which says, "The future belongs to gas."

"We look forward to the years ahead and plan continuing our efforts to provide the best service possible just as we know the Torrance Herald intends as well, to help make this a better city in which to live," the gas company spokesman said.



BIG-INCH MILL . . . Pictured here is the exit end of the largest continuous pipe mill in the world, The Big Inch Pipe Co. plant in Calgary, Canada. The mill was designed and built by Torrance Specialty Fixtures, Inc., and is one of the several pipe plants built by the local firm in such parts of the world as South Africa, Arabia, and elsewhere.

Athletic Association One Of City's Earliest Groups

One of Torrance's early organizations — predating even the Torrance Herald—was the Torrance Athletic Association, organized almost the day the city's townsite was surveyed.

R. R. Smith, still residing here, was the group's first president (as he was later to become the city's first mayor).

Dr. Norman Leake served as secretary; N. B. Fields was financial secretary; and H. S. McManus was a vice president.

Mr. J. S. Torrance, after whom the city was named, gave 15 acres of ground to the group for an athletic field, and the men built a clubroom, installed a billiard table and other recreation equipment, and immediately set out to determine the area's boxing champion in a series of club cards promoted by the association.

"The question of mental relaxation and physical gain is very ably handled by one of the 'liveliest' organizations of its kind," the Herald's editor reported 50 years ago.

The association was formed

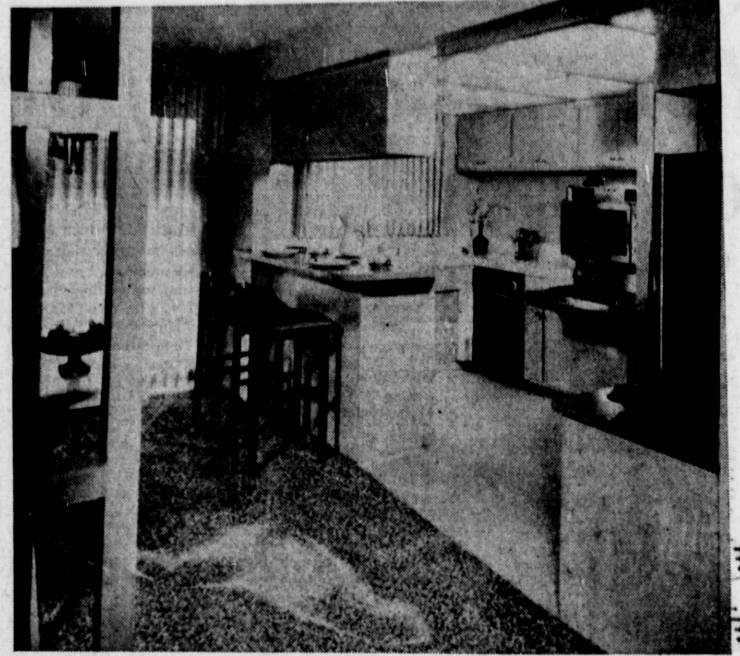
after a mass meeting on May 1, 1913. Charter members included 70 of the city's new residents.

"Today the Torrance Athletic Association has grown to include in its membership practically all the men of the better sort," the editor wrote about the group 50 years ago. "Not to be known as a member is to admit of one's lack of good fellowship standing in the community," he added.

The club offered men of Torrance "an opportunity to indulge in good, clean, health-giving recreation during the leisure moments," it was reported.

DEATH RATE HIGH

The American Cancer Society estimates that about 290,000 people will die of cancer this year. Many of these deaths will be unnecessary—many cases could have been cured by earlier diagnosis and prompt treatment. See your doctor annually for a health checkup.



SPACIOUS INTERIOR . . . Typical of the modern design of all apartment units in the Del Amo Pacific cooperative apartments is this unit. The apartment project, being built in four phases at 3300 W. Carson St., is a development of Sovereign Development Co. of Torrance. The Del Amo Pacific East units have been occupied, and other units in the project will be completed shortly. The North project will feature unique family apartments.

Del Amo Pacific Features Leisure, Care-Free Living

Formality and function keynote one of the largest cooperative garden-type apartments in the West at Del Amo Cooperative Apartments, 3300 W. Carson St.

The project, being built in four phases, seeks to provide the most modern apartments available with maximum use of the relaxed living areas of typical garden style homes. Each phase is a separate entity, but they are designed to blend into a complete development.

Del Amo Pacific East was occupied last summer, and the South units will be ready shortly. Units in the West project will be ready in the fall. A unique family project, Del Amo Pacific North, will be ready this summer.

THE PROJECT is one of sev-

eral garden style cooperatives now being developed by Sovereign Development Co. of Torrance. R. D. Keillor is president of the firm, and has held the post since incorporation of the company 10 years ago.

The units are insured by FHA and meet construction standards required by FHA. A number of procedures and requirements must be met before the FHA will issue the insurance. The Del Amo Pacific apartments have been called one of the finest in the nation by FHA officials.

The units are designed to provide views of landscaped courts and gardens. Interiors are carefully designed to make maximum use of the space and

provide a high degree of flexibility.

RESIDENTS have no maintenance worries, and they don't have to worry about the lawn burning up while they are on vacation.

Occupants are share-owners and apartments are tailored to the individual needs of the residents. Del Amo East, West, and South are adult units, while family units will be built in the North project.

Family units will contain up to 1,850 square feet, and a unique floor plan will separate families with children up to nine years of age from families with older children. A swimming pool and a recreation area are tailored to family needs.

FOR CHILDREN / Fun Designed "Play Safe" Areas
Wading Pools — Party Rooms

FOR PARENTS / Heated Pools — Relax Areas
Recreation Rooms — Barbecues

FOR THE FAMILY / Gracious Living — Close Shopping
Schools — Churches — Transportation

Up to 1850 square feet in size — These 60 Family Engineered Residences provide the ultimate in maintenance free leisure living.

Share costs \$1395.00 to \$1795.00 — \$120.00 reserves a residence. Estimated

monthly payments from \$170.00 for principal and interest 5¼%, F.H.A. insured, and includes maintenance, fire insurance, liability insurance, replacement reserves, real estate taxes, etc.



DEL AMO PACIFIC Cooperative Apartment Homes

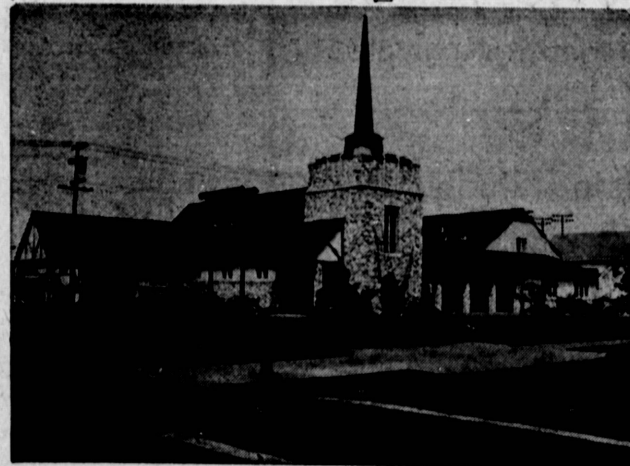
3300 CARSON STREET

1 Block East of Del Amo Shopping Center

Shares offered by North Del Amo Pacific Cooperative Apartments Inc.

Torrance • FA 0-3152 • SP 5-2591

10% selling cost included in all share prices.



Serving You
Since 1914

- Pre-Need Arrangements
- Burial Insurance

Halverson-Leavell
MORTUARY

Funeral Directors

Two Locations:

1223 CRAVENS, TORRANCE
576 W. 6th, SAN PEDRO

FAirfax 8-1223 • TErminAl 2-4221