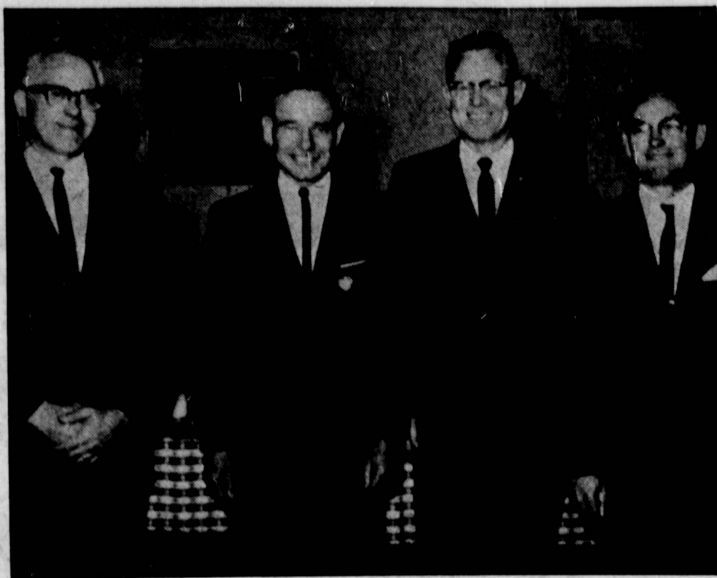


Administrator Named as Host

Leonard Ensminger, administrator at Torrance Memorial Hospital, will serve as a committee member when the South Bay Hospital hosts a meeting of the Coast Area Planning Committee of the Hospital Planning Association of Southern California, May 7. Sixteen members of the coast committee will meet at the hospital for lunch and a business meeting concerned with hospital planning programs in the coastal regions of Southern California.



NEW OFFICERS . . . Newly-elected officers of the Torrance Toastmasters Club pose for a quick shot after installation ceremonies recently. Pictured are Ed Curry, president; Dr. Rollin Smith, first vice president; Scot Albright, second vice president, and Bert Hickox, treasurer. The officers were installed at a dinner meeting of the club.

Save \$\$ With This Ad!

BIGGEST BARGAINS IN TOWN ON AUTO REPAIRS

- RESEAL ANY AUTOMATIC TRANSMISSION INCLUDES PARTS AND LABOR **\$28.50**
- FRONT END ALIGNMENT . . . **\$5.50**
- OVERHAUL **\$105.00**

Any Hydraulic, Power Glide, Power Flite, Torque Flite, or Fordomatic. Includes Parts and Labor

- Free Loan Car • Blue Chip Stamps •

GRONDAHL'S GARAGE
22540 S. WESTERN PHONE 320-4330

GO CLASSIFIED

SACRAMENTO REPORT

Water from Sea Only Solution To Area Thirst

By CHARLES E. CHAPEL
Assemblyman, 46th District
All of California will continue to need more and more fresh water because the population of the States increases very rapidly. Even if nobody came to California from other states, the natural increase of the native population would create demands for water far greater than our present sources.

It is an accepted fact that California will probably receive much less water in the near future from the Colorado River. The California Water Project, originally known as the Feather River Plan, in theory will deliver some water over the Tehachapi Mountains to Southern California within 10 years. However, even if the water comes over the mountains 10 years from now, it does not necessarily follow that Los Angeles County will get enough fresh water from the Colorado River plus the California Water Project (Feather River Plan) to meet the domestic, commercial, agricultural and industrial needs of our exploding population.

Furthermore, as the area south of the Tehachapi Mountains becomes filled with people, newcomers gradually settle in Northern California, thereby increasing the demand of the people north of the Tehachapi Mountains to keep all of their own water and not allow it to go to Southern California. Please remember that the present California Constitution and laws always can be changed by future Legislatures, thereby presenting a potential threat to the current plan to bring water south over the mountains.

THERE ARE a few alternatives to relying on Colorado River Water and California Water Project (Feather River Plan) water. One is the conversion of brackish water to fresh water, which is being done now on a somewhat limited scale. Another source of water is the conversion of sewage into fresh, chemically pure water. People do not like to

think about this method but it is possible to convert sewage, most of which is not actually human sewage, to water which is absolutely safe to drink or to use in cooking. However, to avoid any possible opposition, the so-called sewage can be converted into fresh water for industrial, commercial and agricultural use, thus avoiding any squeamishness about piping it into homes.

Probably the very best source of water for the future is the Pacific Ocean. No water resource is of greater importance in the near future than the sea. However, it is obvious that sea water must be converted into fresh water at a cost low enough to make it available in tremendous quantities for domestic, commercial, industrial and agricultural use. Cost is the word to be emphasized.

IN 1952, the U.S. Department of the Interior's Office of Saline Water reported that it was feasible to convert sea water into fresh water at a cost of about \$4 per 1,000 gallons. In 1964, the same office reported that the cost now is about \$1 per 1,000 gallons for small installations, but this is too high a price for the average householder who pays a nation-wide average of about 30 cents per 1,000 gallons. Also, it is too high for the average farmer who pays about 12 cents per thousand for irrigation water.

The above costs are reasonably accurate estimates for the original continental limits of the United States, that is, the United States minus Alaska and Hawaii. It must be emphasized, also, that the above costs for converting sea water to fresh water are based on comparatively small conversion plants.

EXPERTS HAVE reported recently that a large conversion plant, such as one big enough to provide all the fresh water needs of Los Angeles County, could be built at a cost of 50 cents or less per thousand gallons. Even this

Colt Girls Win Big Victory at Banning Playday

Carson High girl athletes won first place in a Girls' Athletic Assn. playday at Banning High School last week. The Carson High girls met Banning, Franklin, and Narbonne representatives.

Winning first places in 11 of 15 events, the 45 Carson girls participated in several sports.

Host Banning High presented the victorious Carson team with a stuffed animal at the end of the playday.

lower figure is higher than the present average cost of fresh water from conventional sources.

Nearly 700 sensible plans for converting sea water to fresh water have been submitted to the U. S. Department of the Interior for study by its Office of Saline Water. Other departments and bureaus of the federal government have been swamped with hundreds of suggestions, a few of which are feasible but not yet developed far enough to reduce the cost of the converted water to the present cost of water from conventional sources.

look for the golden arches

McDonald's



FREE BALLOONS BANKS • AIRPLANES FOR THE KIDDIES MONDAY, MAY 4th ONLY!

McDonald's are proud . . .

To do their part in assisting the TORRANCE AREA YOUTH BAND to make a planned three week trip this summer for 60 senior band members, that includes a performance at the New York World's Fair, concert in Lincoln Hall of New York City, and tour of the United Nations Building. Band members would then proceed to Washington, D.C., to play for the White House and tour the capitol.

The young musicians will provide their own airplane tickets but \$15,000 is required to cover other expenses.

Monday, May 4th Is "H" Day At The Three Local McDonald Hamburger Drive-ins!

ALL REVENUE FROM THE SALE OF HAMBURGERS ON MONDAY, MAY 4th WILL BE DONATED TO THE TORRANCE AREA YOUTH BAND

DONATIONS MAY BE ADDRESSED TO THE TORRANCE AREA YOUTH BANDS, BOX 1068, AND ADDITIONAL INFORMATION MAY BE OBTAINED BY CALLING LEO SMITH, ASSOCIATION PRESIDENT, FR 1-7023

look for the golden arches

McDonald's



★ 1452 W. Carson ★ 17305 Crenshaw Blvd. ★ 5019 Torrance Blvd.



Charles Cederlof, Manager, Glendale Federal Savings, Torrance Office

Here's how you build an area like the South Bay

Were you aware that your savings account at Glendale Federal is an important factor in the growth of your area? The PREMIUM Home Loans we make to help this area grow represent your savings dollars — and your neighbors' — making a real contribution to the growth and prosperity of your community in the booming South Bay.

And at the same time, you are contributing to your own personal prosperity. At Glendale Federal your savings earn 3 1/2% more than they would in a comparably insured bank savings account. (That's why you so often hear us say "you need both . . . a bank checking account, plus a Glendale Federal savings account.")

And you accomplish all these things with the assurance that your savings are safe and secure. Not only is your account insured to \$10,000 by an agency of the United States government, but you also receive all the safety benefits which result from our being a federally chartered association . . . further assurance of responsibility, dependability and community service.

If you don't already have a savings account at Glendale Federal, drop in and see us today. Start building . . . for yourself and the South Bay.

TORRANCE OFFICE
3832 Sepulveda Blvd.
378-8351

Main Office in Glendale

Earnings Paid 4 Times A Year

Accounts opened by the 10th of any month earn from the 1st Savings Accounts Insured to \$10,000



A HALF-BILLION DOLLAR FEDERALLY CHARTERED FINANCIAL INSTITUTION



There's a lot to do in TORRANCE

If you've newly arrived, looking for the newest shows, the best places to eat, a week-end resort, your church or synagogue, places to shop or perhaps a home or apartment . . . read the

TORRANCE HERALD



Call **DORIS STAMM** DA 7-9193