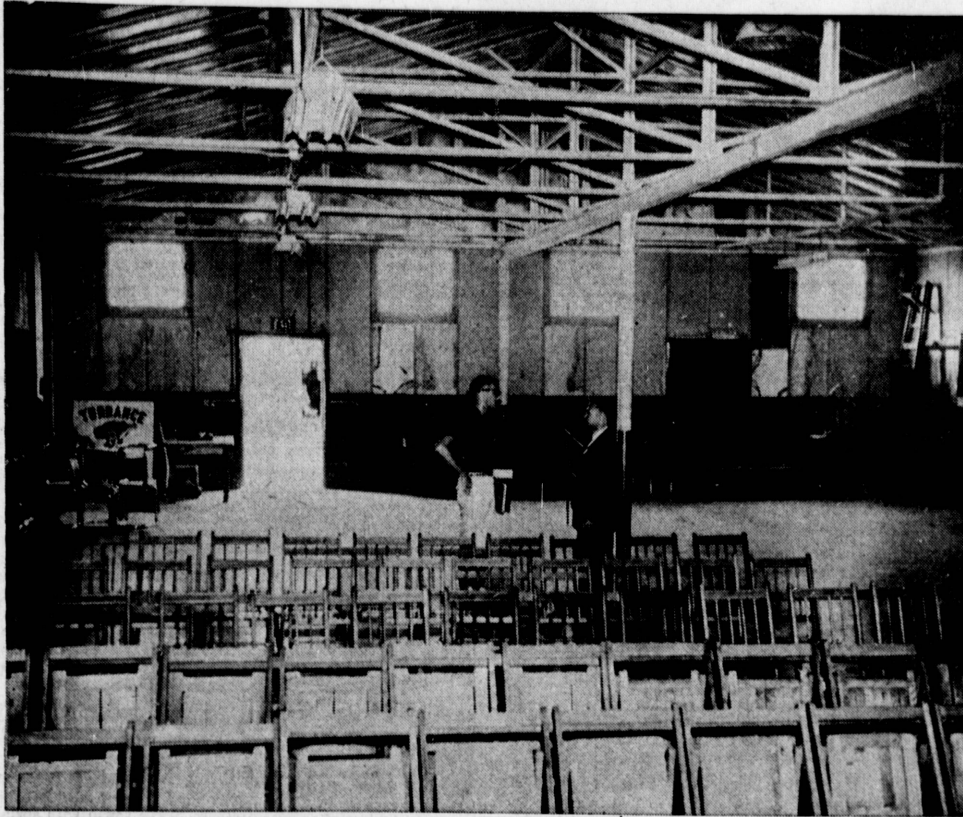


Public Drive Opens for New YMCA Building



OLD "TIN BARN" . . . The present Torrance YMCA facilities at 2080 W. Washington Blvd. served as a Navy mess hall during World War II, and are inadequate for present

activities. Here, Doug Cannon is shown the present decrepit facilities by YMCA Secretary Joe Wilcox. A fund drive to raise cash for a new building currently is under way.



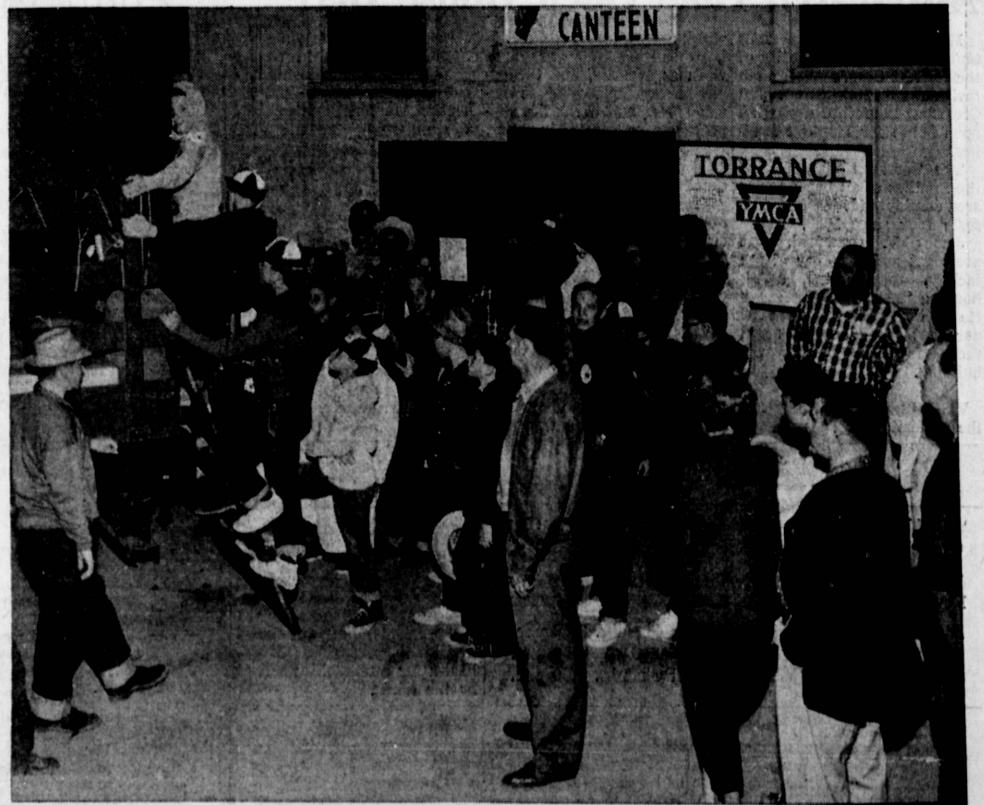
PROPOSED NEW YMCA . . . This is an artist's conception of the new Torrance Family YMCA to be located at 2800 W. Sepulveda Blvd. A kickoff dinner to raise funds for the new building will be held Thursday, April 23, for more

than 600 workers. The new facility will contain many meeting spaces for the 174 clubs involved in "Y" activities and serve as a center to replace present inadequate facilities. A second unit will include a gym and swimming pool.



TOMORROW'S CITIZENS . . . Providing good, constructive activities for local youngsters is one of the purposes of

the Torrance YMCA. One of the reasons for a new YMCA is to provide a place for activities and contests such as this.



CAMPERS AWAY . . . One of the largest camping programs in the nation is maintained through the Torrance YMCA office here. Some 2300 campers last year took part in the

25 camps sponsored locally. Here, a group of local youngsters is seen leaving the old YMCA for a trek to faraway, less crowded places.



GIFT FROM TORRANCE . . . One of the major projects of the Torrance Family YMCA is helping others. Torrance youngsters collect clothes and toys for Navajo Indians in Arizona. Here, a Navajo youngster rides one of the gifts that was sent from Torrance.



HEAP BIG CHIEF . . . One of the biggest programs in the Torrance Family YMCA's program is the Y-Indian Guide program. Eighty-six Guide tribes currently are active in the local program. A major reason for a new building would be to obtain more meeting space.



CAMPFIRE CIRCLE . . . One of the features of the new YMCA for which funds now are being sought will be a campfire circle which will accommodate up to 1000 people

for large "woosy" type meetings. The type of scene represented in this picture will be recaptured many times at group meetings in the new "Y".